

# تصميم معماري III



م.علي سعد عبد الوهاب

جامعة المنيا

كلية الهندسة

قسم هندسة العارة

المحاضرة رقم 12 - اسبوع الثاني عشر  
افكار تصميمية لمشاريع فنادق عالمية  
مشروع تصميم فندق 5 نجوم في محافظة المنيا





**Sign up now** to save and organize your favorite architecture projects

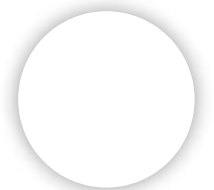


ArchDaily > Projects > Hotels > Singapore > Safdie Architects > 2010 > Marina

# Marina Bay Sands / Safdie Architects

01:00 - 26 July, 2010

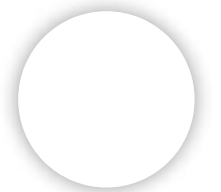
[Share in Whatsapp](#)





**Architects**

Safdie Architects



Singapore

## **Project Director**

Moshe Safdie

## **Executive Architects**

Aedas, Pte, Ltd.

## **Structural Engineering**

Arup

## **Landscape Design**

Peter Walker & Partners

## **Landscape Construction**

Peridian International Inc

## **Budget**

US \$5.7 billion

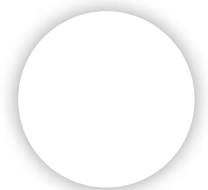
## **Area**

154938.0 sqm

## **Project Year**

2010

*Text description provided by the architects.* Program



1. Hotel – 2,560 luxury rooms in three hotel towers, totaling 265,683 square meters (2,860,000 square feet)

2. Sands SkyPark – the three hotel towers are connected at the top (200 meters/656 feet) by a 9,941 square meter (107,000 square foot) park that brings together a public observatory, jogging paths, gardens, restaurants, lounges, and an infinity swimming pool

This 1.2 hectare (3 acre) tropical oasis is longer than the Eiffel Tower is tall and large enough to park four-and-a-half A380 jumbo jets

It spans from tower to tower and cantilevers 65 meters (213 feet) beyond to form one of the world's largest public cantilevers

It is 340 meters (1,115 feet) long from the northern tip to the south end

The park's maximum width is 40 meters (131 feet)

The 1,396 square meter (15,026 square foot) swimming pool is the largest outdoor pool at its height and has a 145 meter (475 foot)



The entire park can host up to 3,900 people

Its lush gardens include 250 trees and 650 plants

3. Casino – the “atrium style” casino features four levels of gaming and entertainment in one space totaling 15,000 square meters (161,500 square feet) with the atrium ceiling holding a 7 ton chandelier with 132,000 Swarovski crystals and 66,000 LEDs

4. The Shoppes at Marina Bay Sands – includes over 74,322 square meters (800,000 square feet) of retail and restaurant space

5. Sands Expo and Convention Center – consists of 121,000 square meters (1.3 million square feet) of flexible convention and exhibition space, including one of the largest ballrooms in Asia with area of 8,000 square meters (86,100 square feet) and the capacity to host 11,000 people

6. Museum of ArtScience - is 15,000 square meters (161,500 square feet) with 6,000 meters (64,580 square feet) of gallery space, a 3,000 square meter (32,290 square foot) lily pond and has a palm measuring 80 meters (260 feet) in diameter reaching 62 meters (203 feet) above grade and 11 meters (36 feet)



7. Theaters – the two theaters are 21,980 square meters (236,600 square feet square feet) with a combined 4,000 seats

8. Crystal Pavilions – the 5,914 square meters (63,660 square feet) Crystal Pavilions house shops and nightclubs and are the first glass and steel structures to be set in Marina Bay

9. Event Plaza – is 5,000 square meters (54,000 square foot) and capable of hosting 10,000 people for a diverse range of local and international live performances

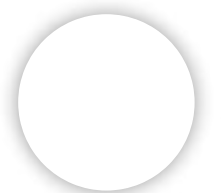
## Public Art

Marina Bay Sands integrates seven site-specific works by artists handpicked by Moshe Safdie to enhance the visitor experience. The Art Path features large-scale public works by artists including:

James Carpenter, Blue Reflection Facade with Light Entry Passage

Antony Gormley, Drift

Ned Kahn. Wind Arbor. Rain Oculus and The Tipping Wall



Sol LeWitt, Wall Drawing #917, Arcs and Circles and Wall Drawing; #915, Arcs, Circle and Irregular Bands

Chongbin Zheng, Rising Forest



Courtesy of Sa...



Courtesy of Sa...



Courtesy of Sa...



Courtesy of Sa...



Courtesy of Sa...



Courtesy of Sa...



Courtesy of Sa...



Courtesy of Sa...



Courtesy of Sa...



Courtesy of Sa...



Courtesy of Sa...



Courtesy of Sa...



Courtesy of Sa...



Courtesy of Sa...



Courtesy of Sa...



Courtesy of Sa...



Courtesy of Sa...



Courtesy of Sa...



Courtesy of Sa...







Courtesy of Sa...



Courtesy of Sa...



Courtesy of Sa...



Courtesy of Sa...



elevation



elevation



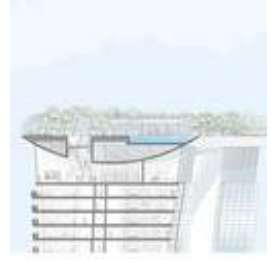
plan



plan



Plan



section



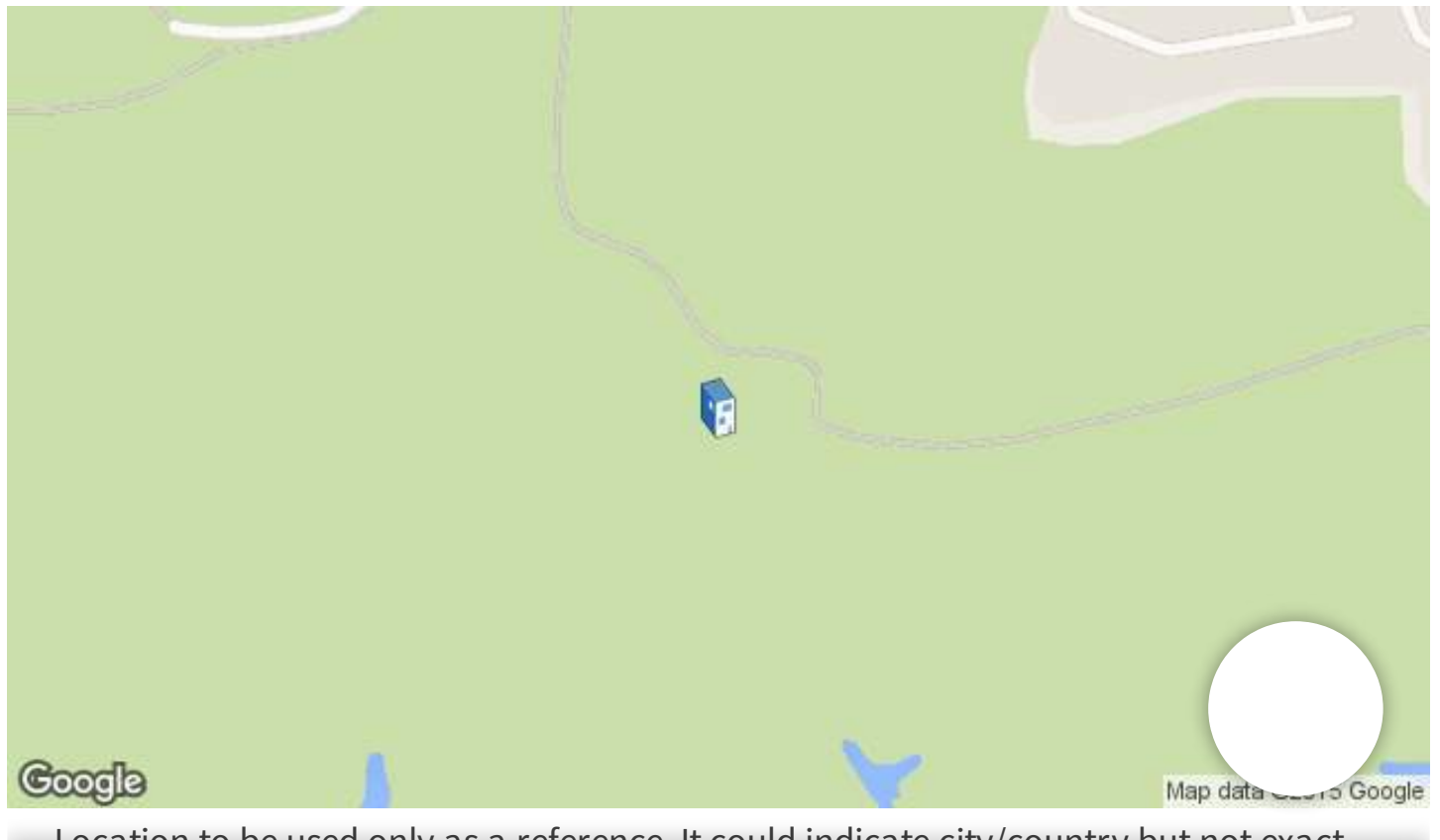
section



elevation



elevation



Location to be used only as a reference. It could indicate city/country but not exact



Share in Whatsapp

**Product:**

Concrete

**See more:**

Projects

Built Projects

Selected Projects

Hospitality Architecture

Hotels

Restaurants & Bars

Landscape Architecture

Park

Hotels and Restaurants

Singapore

Cite: "Marina Bay Sands / Safdie Architects" 26 Jul 2010. ArchDaily. Accessed 15 Apr 2018. <<https://www.archdaily.com/70186/marina-bay-sands-safdie-architects/>> ISSN 0719-8884

BROWSE THE CATALOG





## Solo-M Acoustical Wood Panel

Decoustics



## Metal 2.0

Apavisa



## Quadrillo® Acoustical Wood Panel

Decoustics



## LightFrame® Acoustical Fabric Ceiling and Wall System

Decoustics



## Tiles - Hydraulic

Apavisa

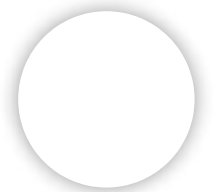




## Tiles - Nanoconcept 7.0

Apavisa

[Read comments](#)





**Sign up now** to save and organize your favorite architecture projects



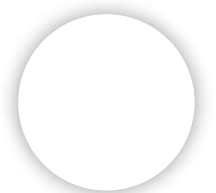
ArchDaily > Projects > Apartments > Turkey > Dilekci Architects > 2013 > Mi'Costa

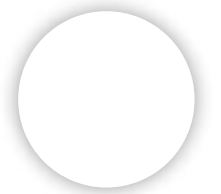
European Union Prize  
**MIES ARCH**

# Mi'Costa Hotel Residences / Uras X Dilekci Architects

01:00 - 22 January, 2015

[Share in Whatsapp](#)





## Architects

[Dilekci Architects](#)

## Location

Boyalık Mh., Boyalık Muhtarlığı, 35937 Çeşme/İzmir, [Turkey](#)

## Architect in Charge

Durmus Dilekci

## Area

10085.0 sqm

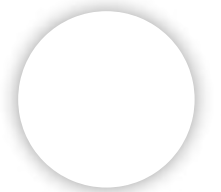
## Project Year

2013

## Photographs

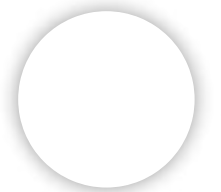
[Özgür Arı](#)

[More Specs](#)





*Text description provided by the architects.* Mi'Costa Hotel and Residences Project is one of the nominated projects from Turkey for Mies Van Der Rohe 2015, that is most prestigious European Union Prize.







The project Micosta is located in magnificent Boyalik beach  
[Çeşme](#) Peninsula, Izmir. [Çeşme](#) Peninsula excels from its sea,



climate and thermal springs. Hotels and houses are very common in the region.



Each room in Micosta, is design to see the sea coast uninterrupted. Moreover, structures in the project area c down closer to the sea (at the same time to prevent from wind,



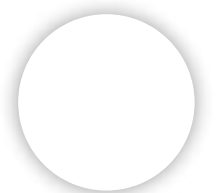
be accessible from two fronts that has come down to external fields. The lower floors can take the sun on the South side to the bright and spacious gardens.



Active solar orientation (south) lie directly behind the project. Hot and windy climate has been the determining factor for the facts. Extensive use of open space for each unit garden-terrace

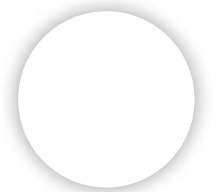


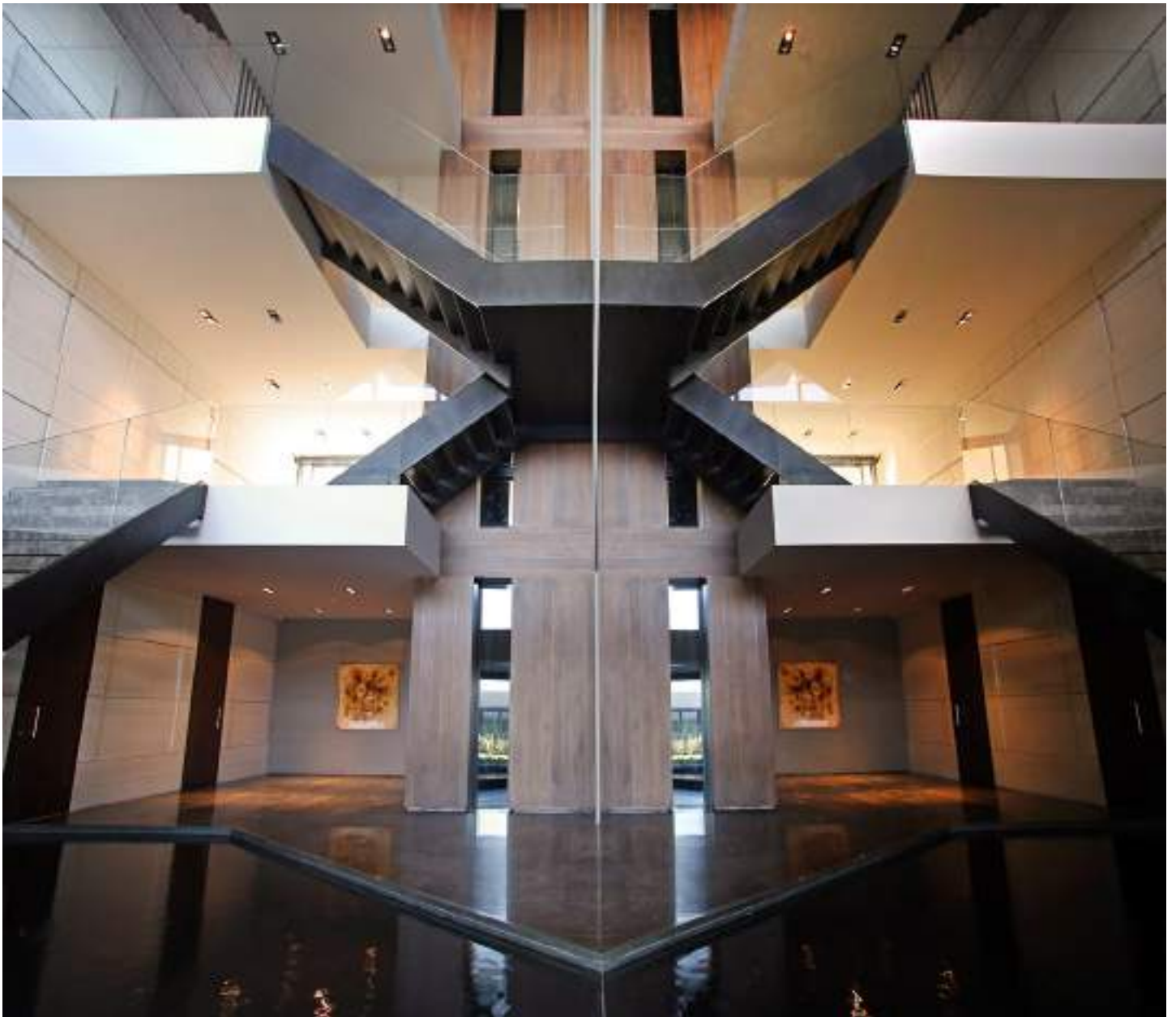
to get more sun light in to the middle of courtyard, the structure is moved to south direction for 2 meters on each floor. This shift from the southern direction also provided to create advantageous and effective sun shadow area. The units has inner and outer spaces to use according to different weather conditions. In addition to being in a seafront location, courtyard sheltered areas has designed to prevent houses from the wind of north. This courtyard creates a space for each unit to meet up and disperse. Moreover, entrance lobby, social center, restaurant and spa areas are reachable from this courtyard. Besides, the open spaces covers the swimming pool and thermal pool areas.





There are two entrances to the project area. The central area is being accessed by the main entrance lounge. In addition, an upper rib entry can be made on the north side.





The project designed upon ecological and sustainability criteria. Emphasis was placed on the use of passive climatic data. Orientation of the project was creating shadows by using the sun's angle of incidence. Also by taking the advantage of the northern lights and turning in to a positive part of this project. At the same time, units with two fronts contributes to the interior space ventilation meaning that two front-units can benefit from



is provided by geothermal water. Fire water tanks and pool water is obtained by the method of reverse osmosis. Widely used electric power is also contribute from the common used wind turbines in [Çeşme](#). Structural system of concrete is a skeleton system. GFRC high performance glass has been used at the facades.





© Özgür Arı



© Özgür Arı



© Özgür Arı



© Özgür Arı



© Özgür Arı



© Özgür Arı



© Özgür Arı



© Özgür Arı



© Özgür Arı



© Özgür Arı



© Özgür Arı



© Özgür Arı



© Özgür Arı



© Özgür Arı



© Özgür Arı



© Özgür Arı



© Özgür Arı



© Özgür Arı



© Özgür Arı



© Özgür Arı



Floor Plan



Floor Plan



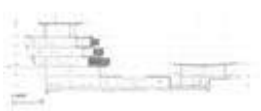
Floor Plan



Floor Plan



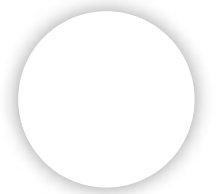
Floor Plan



Section



Section

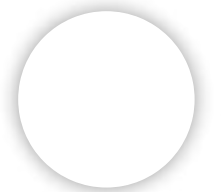






Location to be used only as a reference. It could indicate city/country but not exact address.

[Share in Whatsapp](#)



## Products:

Steel

Concrete

## See more:

Projects

Built Projects

Selected Projects

Residential Architecture

Housing

Apartments

Çeşme

Mies van der Rohe Award

Housing

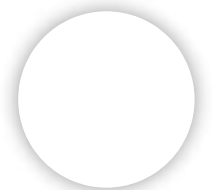
Residential

Turkey

---

Cite: "Mi'Costa Hotel Residences / Uras X Dilekci Architects" 22 Jan 2015.  
ArchDaily. Accessed 15 Apr 2018. <<https://www.archdaily.com/589570/mi-costa-hotel-residences-dilekci-architects/>> ISSN 0719-8884

## BROWSE THE CATALOG



---

**Tiles - Nanofacture 7.0**

Apavisa

**Quadrillo® Acoustical Wood Panel**

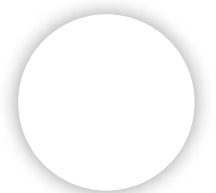
Decoustics

**Fori™ Acoustical Wood Panel**

Decoustics

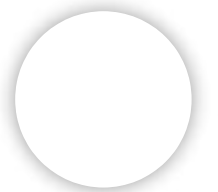
**Tiles - Iconic Beige**

Apavisa



---

**Read comments**



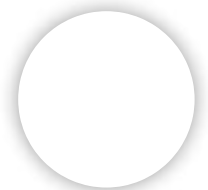


ArchDaily > Projects > Mixed Use Architecture > China > Morphosis > 2016 > M

# Morphosis Breaks Ground on Shenzhen Office Tower

18:50 - 14 April, 2015 | by [Karissa Rosenfield](#)

[Share in Whatsapp](#)

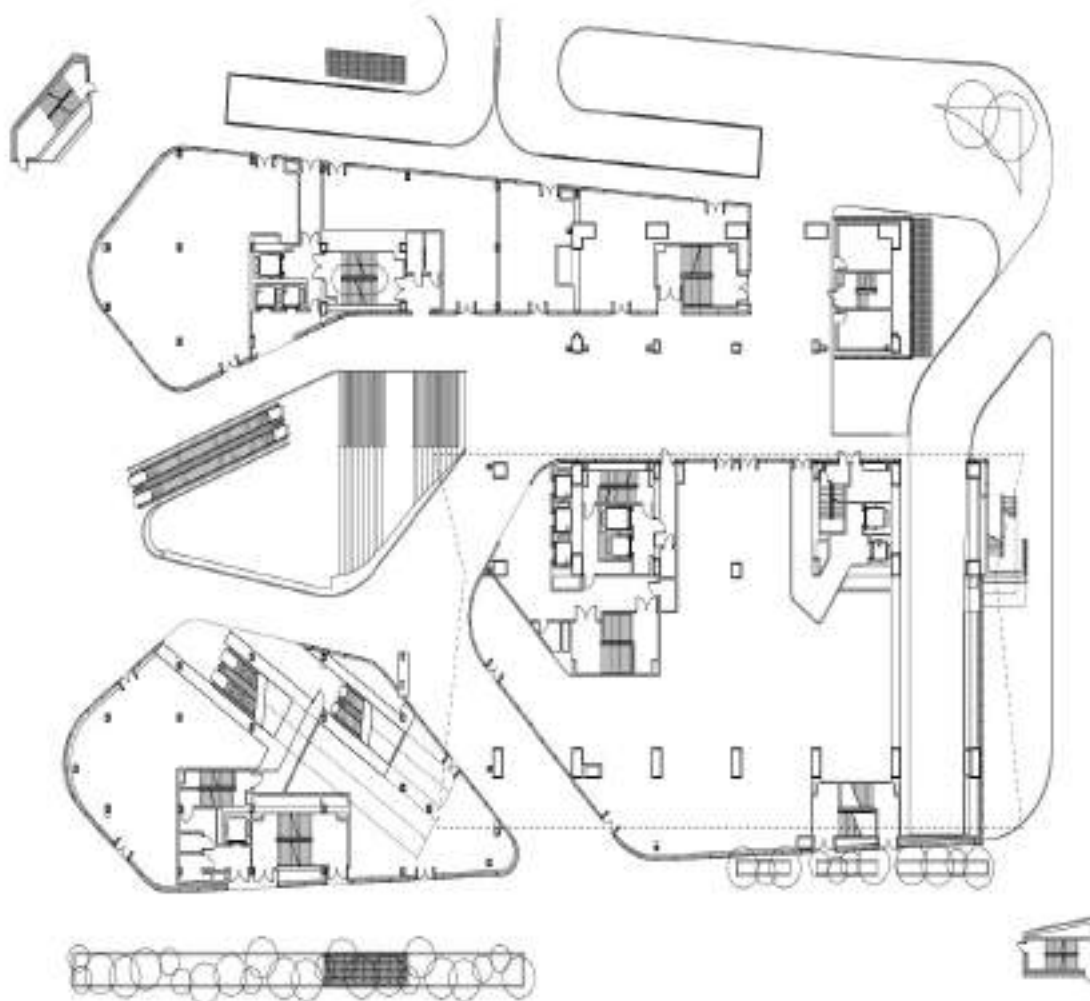




Construction is underway on a striking new tower by [Morpho Architects](#) in [Shenzhen](#). "A departure from conventional towers,"



merges commercial retail with private office space through the folding of its steel structure. Beyond that, tenants are connected via a series communal sky gardens and a massive sun-lit atrium that occupies the building's core.

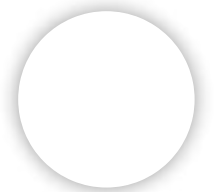


**PLAN 01**  
HANKING CENTER TOWER

50m



*From the architects:* Hanking Center Tower rethinks the traditional commercial office building through an innovative approach to circulation, social, and work spaces. Offering flexible tower office space anchored by high-end retail and dining in the podium, the Tower serves [Shenzhen](#)'s growing body of global professionals and brings density to the suburb of Nanshan.

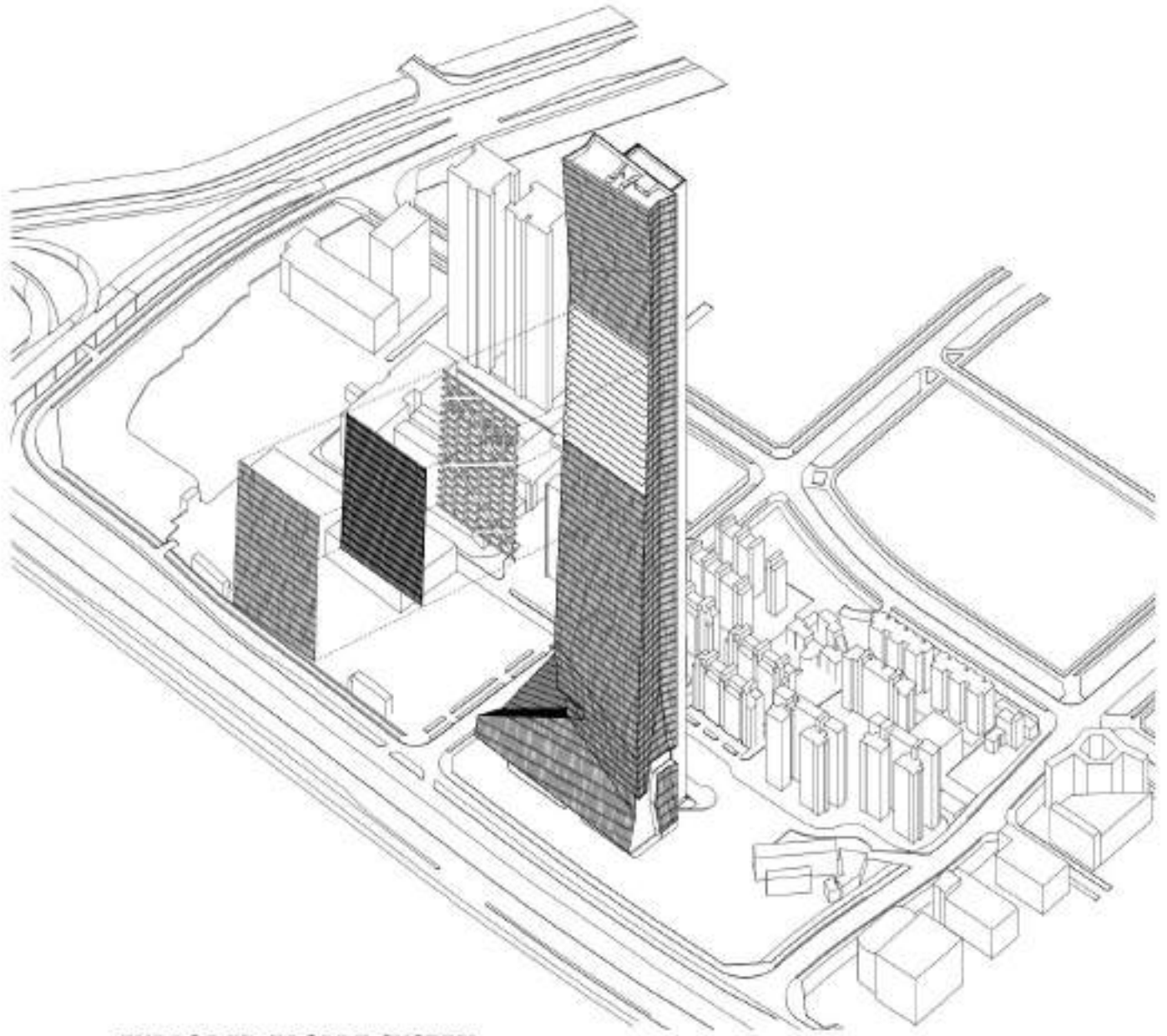






Occupying a place of prominence on Shennan Boulevard, Hanking Tower's slender profile redefines the local skyline. The Center utilizes folded angles to elegantly merge public components in the podium with private commercial space in the tower – a departure from conventional towers, where differing program is often relegated to separate and disjointed volumes. Surrounding the tower's podium, a grand plaza and dimensional hardscape create a new neighborhood landmark and enhance public activity at street level.





## **EXPLODED FACADE SYSTEM**

HANKING CENTER TOWER

The form of the tower is primarily defined by its pioneering steel structural system, which offsets the primary movement and service cores to the exterior of the floorplate. Shifting the cores open the main body of the tower, significantly minimizing building's structural footprint while maximizing open space.



VIP users, as well as freight elevators and mechanical services. A series of sky bridges and diagonal mega-braces rigidly link the offset core to the main tower. Glazed lobbies and skygardens every five floors create a communal hub for use by all tenants.



As the new icon for the high-tech industrial sector, the Hanking Center Tower is designed as an incubator for emerging technologies, providing for growing firms with evolving space requirements. The open floor plate, made possible by the tower's

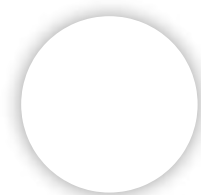


and airflow. Offsetting the core also allows for a public to private gradient of activity on each floorplate, as tenants move from circulation and social spaces around the core to quieter perimeter offices with panoramic views. Freed from the interior of the building, circulation and amenity areas gain natural light and exterior views over the city to transform from conventional to vibrant public space.



**Architects**

[Morphosis Architects](#)



---

## **Design Director**

Thom Mayne

## **Project Principal**

Eui-Sung Yi

## **Project Manager**

Hann-Shiuh Chen, Amit Upadhye

## **Project Architect**

Mario Cipresso, Jamie Wu

## **Project Designer**

Natalia Traverso Caruana, Daniel Pruske, Ben Toam

## **Project Team**

Ilaria Campi, Sarah Kott, Daniel Leone, Michael Nesbit, Atsushi Sugiuchi

## **Project Assistants**

Natalie Abbott, Viola Ago, Marco Becucci, Cory Brugger, Paul Cambon, Carmelia Chiang, Sam Clovis, Tom Day, Ryan Docken, Chris Eskew, Bart Gillespie, Greg Gyulai, Parham Hakimi, Kerenza Harris, Yoon Her, One Jae, Jonathan Kaminsky, Hunter Knight, Katie MacDonald, Nicole Meyer, Carolyn Ng, Silje Pihlak, Jodie Rieke, Ari Sogin, Stan Su, Derrick Whitmire, Pablo Zuzunegui



---

## **Associate Architect**

Zhubo Design

## **Client**

Hanking Group

## **Structural**

Halvorson + Partners, Chicago

## **Structural Concepts**

John A. Martin & Associates, Inc.

## **MEP / Fire Protection**

Parsons Brinckerhoff

## **MEP & Façade Concepts**

Stantec

## **Façade**

SuP Ingenieure GmbH, Darmstadt, Germany

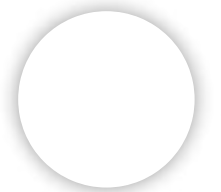
## **Vertical Transportation**

Parsons Brinckerhoff

## **General Tower Consultant**

w.erk studios

## **Site Area**



## Area

---

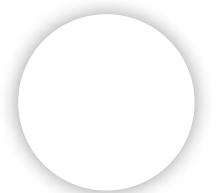
110169.0 sqm

## Project Year

2016

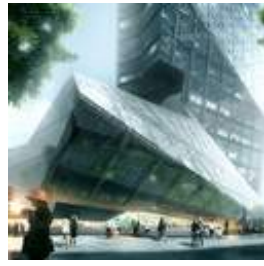
## Photographs

[Morphosis Architects, Luxigon, courtesy of Morphosis Architects](#)

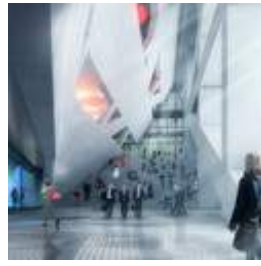




© Morphosis A...



Plaza. Image ...



Lobby. Image ...



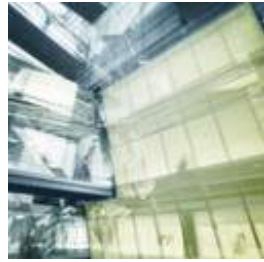
Retail. Image ...



© Luxigon, co...



Bridge. Image...



Infill. Image ©...



Site Plan. Ima...



Plan 1. Image ...



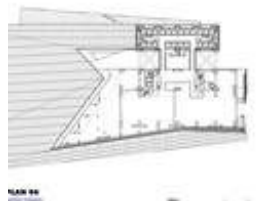
Plan 2. Image ...



Plan 3. Image ...



Plan 4. Image ...



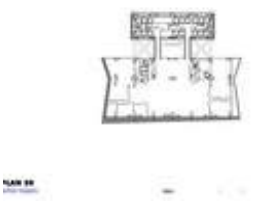
Plan 6. Image ...



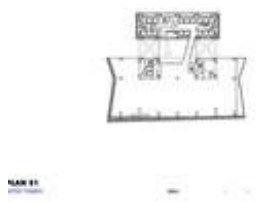
Plan 7. Image ...



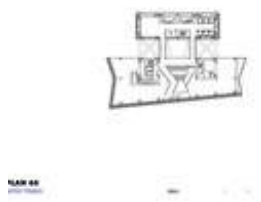
Plan 19. Imag...



Plan 20. Imag...



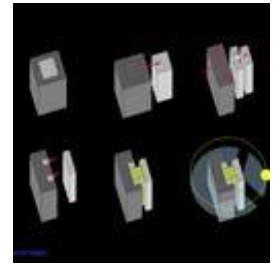
Plan 21. Imag...



Plan 65. Imag...



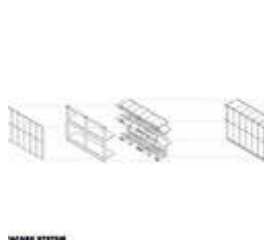
Plan 69. Imag...



Massing Devel...



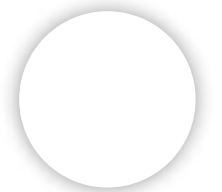
Exploded Faca...



Facade Syste...



Commercial A...





## See more:

Projects

Unbuilt Project

Mixed Use Architecture

Offices

Office buildings

Shenzhen

Offices

Mixed Use

Office Buildings

China

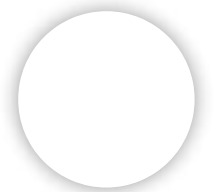
Cite: Karissa Rosenfield. "Morphosis Breaks Ground on Shenzhen Office Tower" 14 Apr 2015. ArchDaily. Accessed 15 Apr 2018.

<<https://www.archdaily.com/619597/morphosis-breaks-ground-on-shenzhen-office-tower/>> ISSN 0719-8884

## BROWSE THE CATALOG



**Solo-M Acoustical Wood Panel**  
Decoustics





**Quadrillo® Acoustical Wood Panel**  
Decoustics



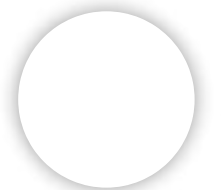
**LightFrame® Acoustical Fabric Ceiling and Wall System**  
Decoustics



**Tiles - Hydraulic**  
Apavisa

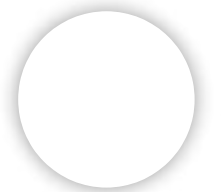


**Tiles - Nanoconcept 7.0**  
Apavisa



---

## Read comments





[ArchDaily](#) > [Projects](#) > [Hotels](#) > [United States](#) > [ODA New York](#) > [ODA's 71 Whit](#)

# ODA's 71 White Street in Brooklyn Incorporates the Site's Graffitied Walls Into the Design

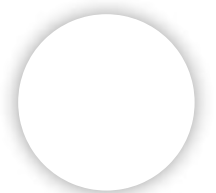
08:00 - 28 December, 2015 | by [Eric Oh](#)

[Share in Whatsapp](#)



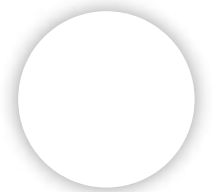
Bushwick, now famed for its art, night life and abundance of green spaces, is one of the fastest gentrifying neighbourhoods in [Brooklyn](#). [ODA New York's](#) 71 White Street will be the latest in new developments taking over former industrial buildings in the neighborhood -- but with a twist. Using the foundation of a former 1930s manufacturing building, 71 White will preserve its graffitied [brick](#) exterior, maintaining the character of the neighbourhood. Read more about the project after the break.

The new development will feature a 100-key [hotel](#), cantilevered over an elevated [market](#) square with an [amphitheater](#), [retail](#), [restaurants](#) and bars. Retail will be distributed throughout the two lowest floors of the building, with the five upper floors comprising the hotel. A second, open-air floor will separate the two, serving as a multi-use public promenade with Bushwick and [Manhattan](#) as backdrops.



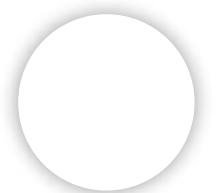


*From the architect:* 71 White Street's lot borders East Williamsburg's industrial blocks and Bushwick's residential fabric.



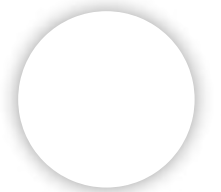


271 White Street is situated between Bushwick’s commercial and residential zones. Previously the site of a Citi Bike repair station, the property was purchased for the development of a 112-room hotel. The existing exterior—clad in graffiti by local artists—was carefully preserved in order to maintain the character of the neighborhood.





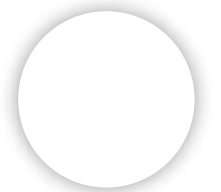
By preserving the building’s original graffitied exterior—even while gutting the interior—designers have managed to maintain the cultural relevance of this unique site.





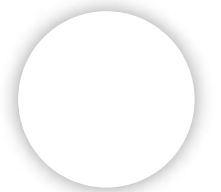


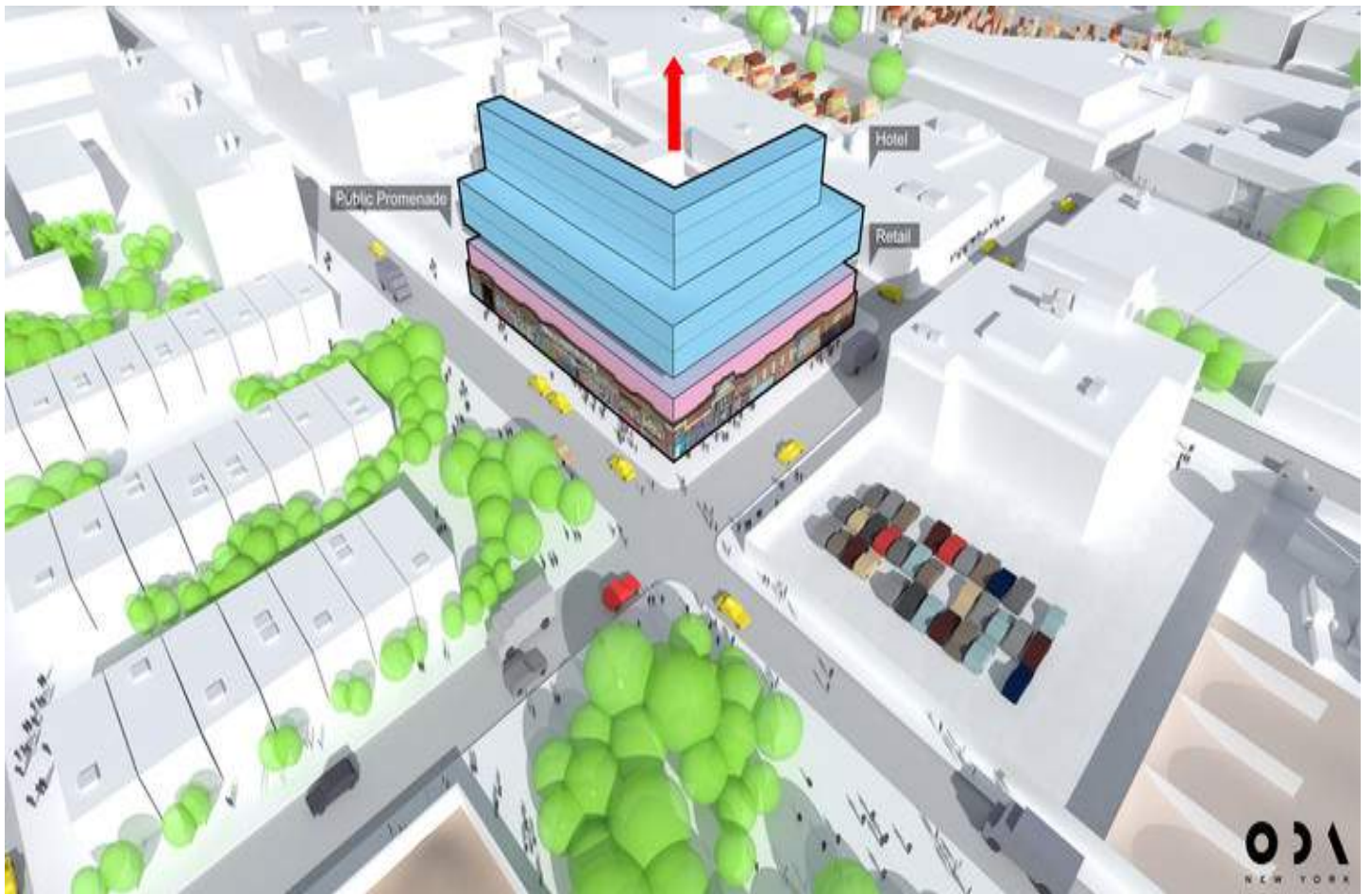
Retail will be redistributed between the building's two lowest floors, while the five upper floors will comprise the hotel.



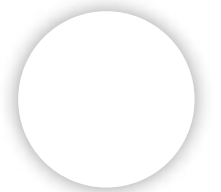


By elevating the hotel above the attached retail space, a semi-public outdoor promenade was created. Meanwhile, another floor added atop the structure maximizes views.



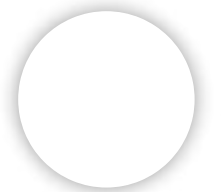


To facilitate the flow of people, amplify permeability, and maximize the penetration of light, a grand entrance was erected at the building's first floor corner. Additionally, large industrial windows and alternative entrances were carved out of the existing façade.



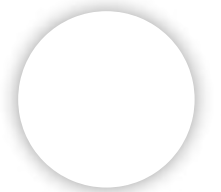


The issue of how to access the outdoor promenade from the ground floor retail—while simultaneously creating an attractive, multi-event outdoor space—was addressed by incorporating a large, looped path, which begins at the main entrance and reaches both the east and west ends of the building.



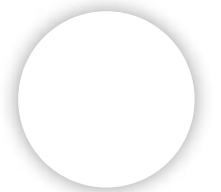


The final arrangement of the hotel volume defines the plaza as the negative space of the bulk.



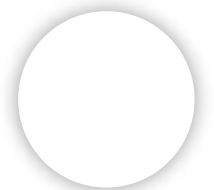


Setting back the top half of the building allowed for the insertion of an expansive skylight, in addition to breaking up the mass and providing space for several hotel room terraces.



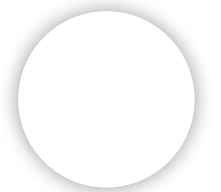


In order to facilitate the span that permits the various open spaces below, an integral structural grid was created. The grid not only provides the necessary structure, but defines the building's fenestration, distinguishing individual hotel room spaces and articulating the hotel's various communal spaces, listed below.





Currently, plans are in the works for a gym, pool, integrated indoor and outdoor rooftop bar, dedicated elevator to the roof, and an array of presidential suites in addition to standard-sized rooms.







## Architects

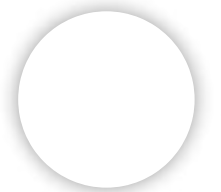
[ODA New York](#)

## Location

71 White St, Brooklyn, NY 11206, USA

## Area

7500.0 sqm





Exterior Rend...



Exterior Rend...



Courtesy of O...



Courtesy of O...



Courtesy of O...



Courtesy of O...



Courtesy of O...



Courtesy of O...



Courtesy of O...



Courtesy of O...



Interior Rende...



Courtesy of O...



Courtesy of O...



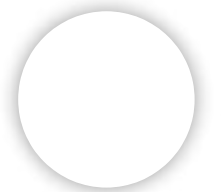
Courtesy of O...



Exterior Rend...



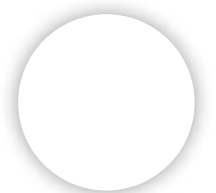
Building Secti...





Location to be used only as a reference. It could indicate city/country but not exact address.

[Share in Whatsapp](#)



## Product:

Brick

## See more:

Projects

Unbuilt Project

Hospitality Architecture

Hotels

Mixed Use Architecture

Commercial Architecture

Retail

Brooklyn

Brick

New York

United States

Cite: Eric Oh. "ODA's 71 White Street in Brooklyn Incorporates the Site's Graffitied Walls Into the Design" 28 Dec 2015. ArchDaily. Accessed 15 Apr 2018. <<https://www.archdaily.com/779144/odas-71-white-street-in-brooklyn-preserves-the-character-of-the-neighbourhood-by-incorporating-the-sites-graffitied-walls/>> ISSN 0719-8884

## BROWSE THE CATALOG

Solo-M Acoustical Wood Panel



---

## **Metal 2.0**

Apavisa

## **Quadrillo® Acoustical Wood Panel**

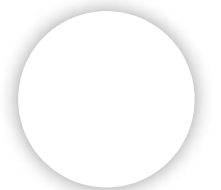
Decoustics

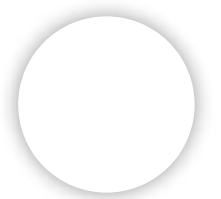
## **LightFrame® Acoustical Fabric Ceiling and Wall System**

Decoustics

## **Tiles - Hydraulic**

Apavisa





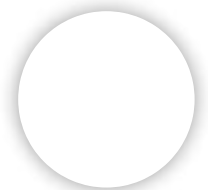


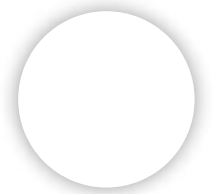
ArchDaily > Projects > Hotels > Spain > Isern Associats > 2016 > OHLA Hotel

# OHLA Hotel EIXAMPLE / Isern Associats

09:00 - 4 August, 2017

[Share in Whatsapp](#)







---

## Architects

[Isern Associats](#)

## Location

Carrer de Còrsega, 291, 08008 Barcelona, [Spain](#)

## Architect in Charge

Daniel Isern

## Area

7365.0 m<sup>2</sup>

## Project Year

2016

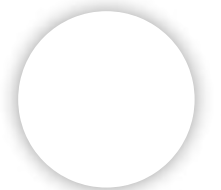
## Photographs

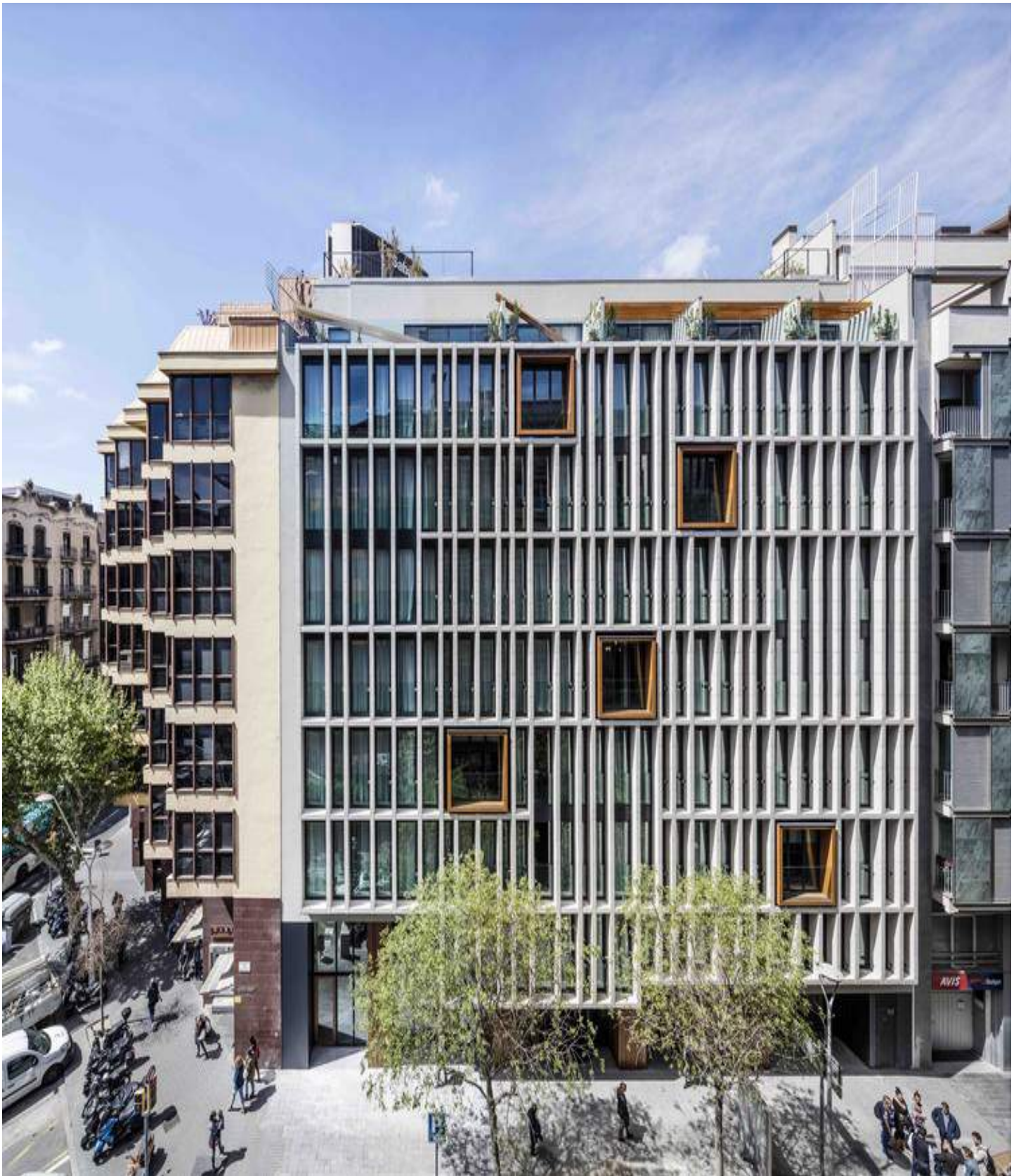
[Adrià Goula](#)

## Manufacturers

[Technal](#), Ceràmica Cumella, Weber

More Specs

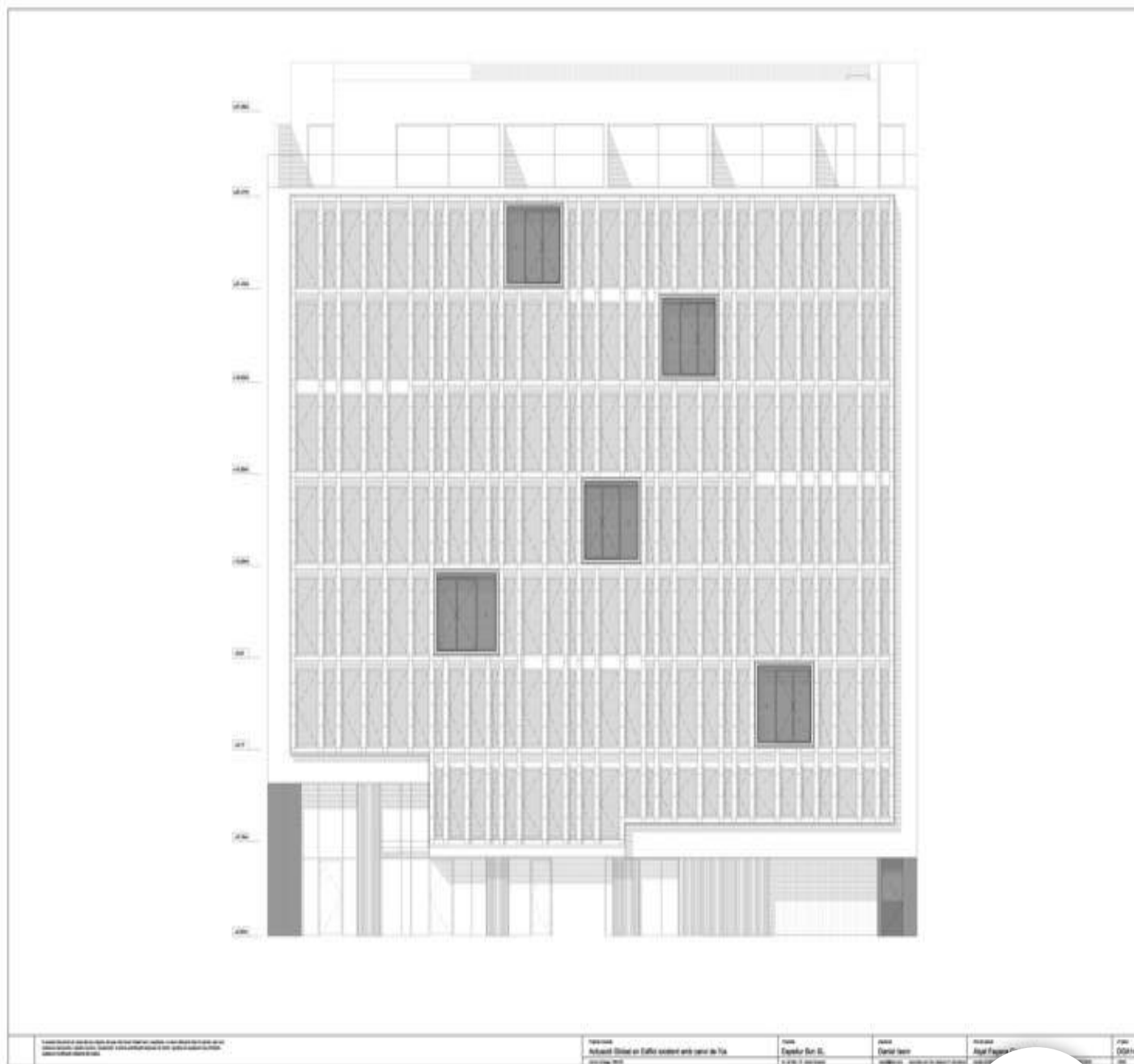




*Text description provided by the architects. All in all, it was an easy task.*



An anodyne office building from the 1970s with not enough free height between the floor structures but at the same time higher than the current law allows, constructed above railway arches which subjected it to an insufferably high level of vibration.



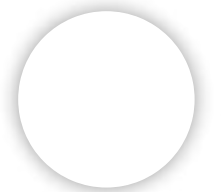




With the above three conditioning factors, the project was  
around these three concepts:



**The Technology:** this allowed us to install some seismic shock absorbers to each pillar on the ground floor level, activated by hydraulic jacks. This system divided the building into two parts leaving everything at street level separate from the basement, thus achieving the comfort that a hotel requires.

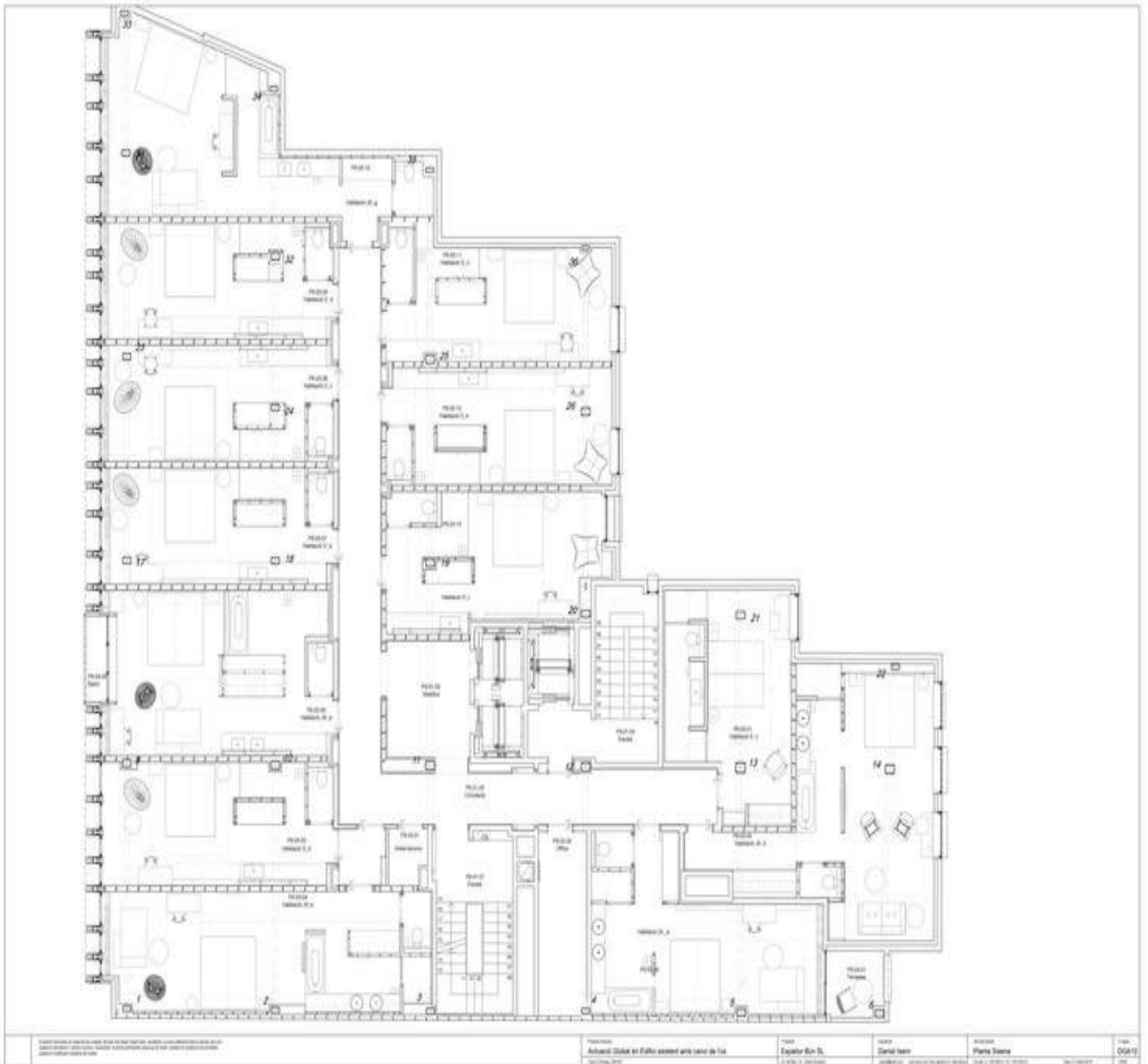




**The Aesthetic:** in the interior the project establishes a dialogue between the existent structure, which is left naked and exposed,



and its use as a hotel, which is revealed in very high quality materials which do not go beyond the perimeters of each room.

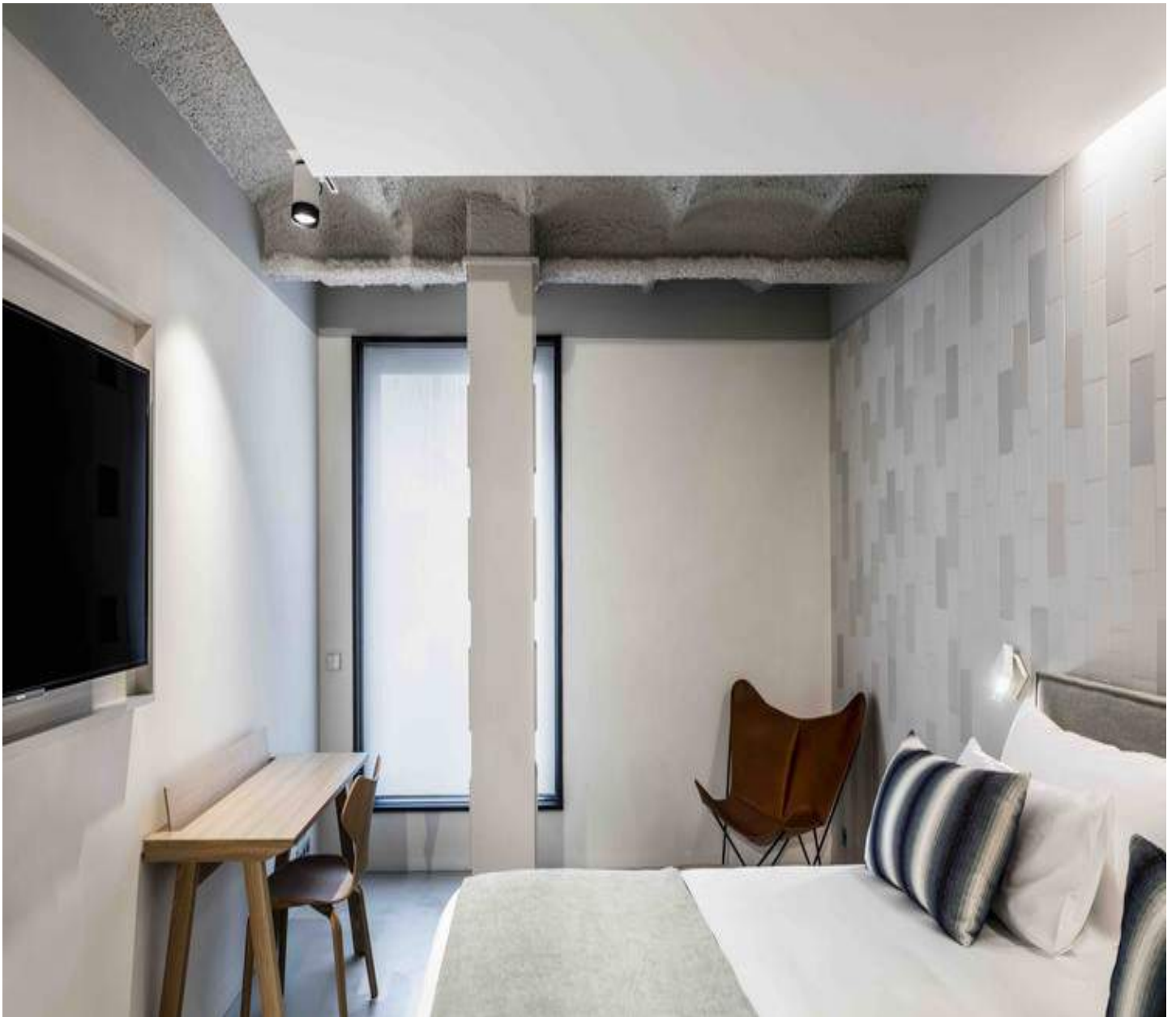


Therefore, in spaces with concrete floors, metal pillars and ceiling vaults, revealed by the use of wood, ceramic and plaster, a dialogue is established in which the two elements are not allowed





to intrude on one another, and amongst which, some carefully chosen and perfectly lit pieces of furniture can be found.



**The City:** the facade, the manner in which a building relates to its surroundings, works as a way to filter out aspects of the location, which despite being very central, is made uncomfortable by the close proximity of Balmes Street.

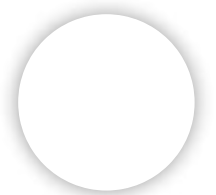




A façade was thus composed of vertical and horizontal elements of great depth, which modulate a blurred vertical rhythm, making



is then disrupted by five wooden boxes, which act as balconies. Ceramic was chosen for the façade, a material which has a strong link to the city's history, to which an extra value was added – music.





With the help of Cerámica Cumella and the IAAC, we invented an algorithm which, based on sound, created a model which a robot



extrusion. This process allowed us to create an infinite number of pieces, each one unique and different but each with the same pattern.



For this piece, the musical composition “Vivaldi Recomposed” by Max Richter was chosen. This piece, like our project, uses as its base something from the past, in this case Vivaldi’s Four Seasons, which are then given a modern twist.



The same system is used to create the great ceramic mural that fills the whole of the ground floor, starting at reception and





© Adrià Goula



© Adrià Goula



© Adrià Goula



© Adrià Goula



© Adrià Goula



© Adrià Goula



© Adrià Goula



© Adrià Goula



© Adrià Goula



© Adrià Goula



Type Plan



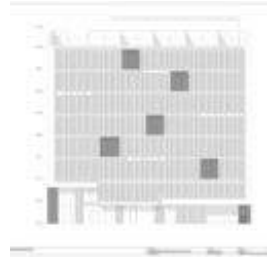
Section



Section



Elevation



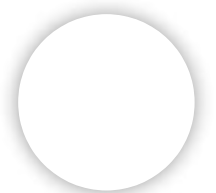
Elevation



Details



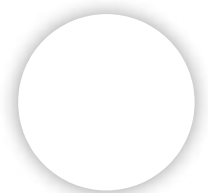
Details





Location to be used only as a reference. It could indicate city/country but not exact address.

[Share in Whatsapp](#)





## Product:

Concrete

## See more:

Projects

Built Projects

Selected Projects

Hospitality Architecture

Hotels

Barcelona

Spain

---

Cite: "OHLA Hotel EIXAMPLE / Isern Associats" [OHLA HOTEL EIXAMPLE / Isern Associats] 04 Aug 2017. ArchDaily. Accessed 15 Apr 2018.

<<https://www.archdaily.com/874935/ohla-hotel-eixample-isern-associats/>>

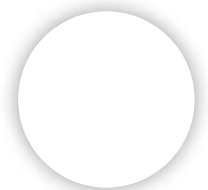
ISSN 0719-8884

## BROWSE THE CATALOG



### Solo-M Acoustical Wood Panel

Decoustics





## **Metal 2.0**

Apavisa



## **Quadrillo® Acoustical Wood Panel**

Decoustics



## **LightFrame® Acoustical Fabric Ceiling and Wall System**

Decoustics



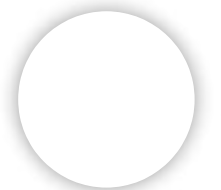
## **Tiles - Hydraulic**

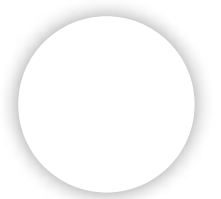
Apavisa



## **Tiles - Nanoconcept 7.0**

Apavisa







**Sign up now** to save and organize your favorite architecture projects

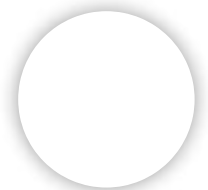


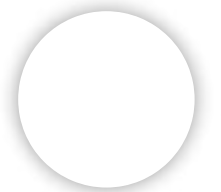
ArchDaily > Projects > Hotels > Singapore > WOHA > 2013 > PARKROYAL on

## PARKROYAL on Pickering / WOHA

01:00 - 23 April, 2013

[Share in Whatsapp](#)





## Architects

[WOHA](#)

## Location

Singapore 058289, [Singapore](#)

## Project Team

Wong Mun Summ, Richard Hassell, Donovan Soon, Sim Choon Heok, Toh Hua Jack, Bernard Lee, Amber Dar Wagh, Mappaudang Ridwan Saleh, Evelyn Ng, John Paul Gonzalez, Josephine Isip, Goh Kai Shien, Luu Dieu Khanh, Tan Szue Hann, Alen Low, Pham Sing Yeong, Vanessa Ong, Novita Johana, Andre Kumar Alexander

## Area

29811.0 sqm

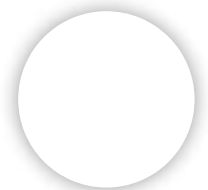
## Project Year

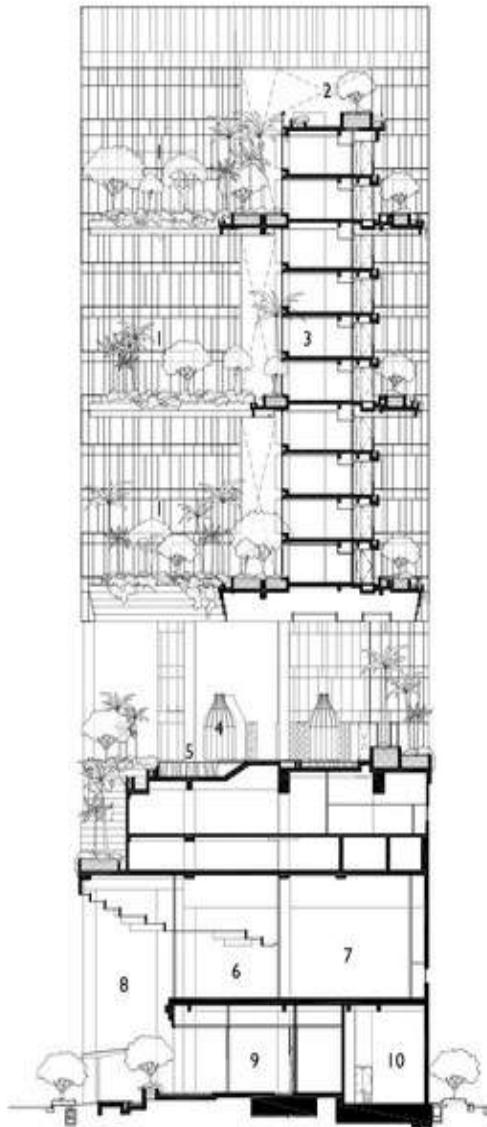
2013

## Photographs

[Patrick Bingham-Hall](#)

More Specs





LEGEND

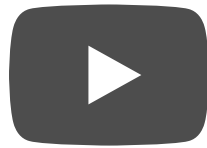
- 1 SKYGARDEN
- 2 ROOF TERRACE
- 3 GUESTROOMS
- 4 CABANAS
- 5 SWIMMING POOL
- 6 PREFUNCTION LOBBY
- 7 CONFERENCE ROOM
- 8 URBAN VERANDAH
- 9 HOTEL PASSAGEWAY
- 10 BACK OF HOUSE

*Text description provided by the architects.* Singapore-based

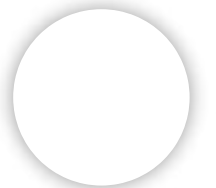
WOHA Architects have long been advocates of the ultimate 'green



were left as wilderness – and the PARKROYAL on Pickering was designed as a hotel-as-garden that actually doubled the green-growing potential of its site.



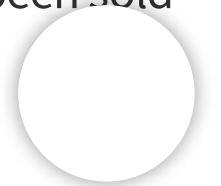
Massive curvaceous sky-gardens, draped with tropical plants and supporting swathes of frangipani and palm trees, are cantilevered at every fourth level between the blocks of guest rooms. Greenery flourishes throughout the entire complex, and the trees and gardens of the hotel appears to merge with those of the adjoining park as one continuous sweep of urban parkland.







Most of [Singapore](#)'s recent architecture – especially in and around the city centre – is nothing more than generic and can be seen anywhere in the world, regardless of climate and culture. An equilibrium point of architectural anonymity has been derived from a number of factors – corporate and bureaucratic risk-avoidance, a desire to promote a global (homogenous) image rather than local, and the ubiquity of semi-famous international architects – but a uniquely progressive tropical city has been sold short.





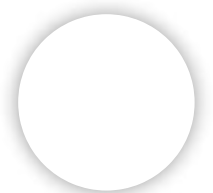
WOHA paid no attention to the placeless blandness of the modern [Singapore](#) skyline, and finally the city has a uniquely expressive urban landmark that reinterprets and reinvigorates its location. The PARKROYAL on Pickering was a purely commercial development, with well-defined budgetary and program constraints. But as with many of WOHA's projects built



throughout Asia over the last decade, the hotel performs unambiguously as a public building.



WOHA are reconciling the excessive (and almost exclusively privately funded) construction of 21st century Asian cities with the remediation of the built environment. And WOHA are proposing that commercial architecture must respond to the city as its civic duty... as public architecture.





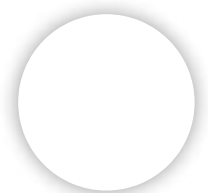
The PARKROYAL on Pickering occupies a long and narrow  
the western edge of the central business district, between Hong



overlooks the historic shophouse district between the park and the [Singapore River](#). The development could thus respond to many separate and disparate environments, it could provide public connections between those zones, and as the building would be extremely visible – from and across the parkland to the north – the architects could make a grand (and green) urban gesture.



Perched above the open-to-all-the-elements pool deck of a five-storey podium, a twelve-storey tower forms an E plan, so that all guest rooms look north to the park and/or into the sky gardens, whilst the services and the external connecting corridors were placed on the southern elevation. As the hotel is 'self-shaded' – by the projecting sky gardens and the adjacency of the three room-blocks – and shielded from early morning and afternoon sun by adjoining buildings, the rooms could be fully glazed (by low-emissivity glass) without external screening devices.

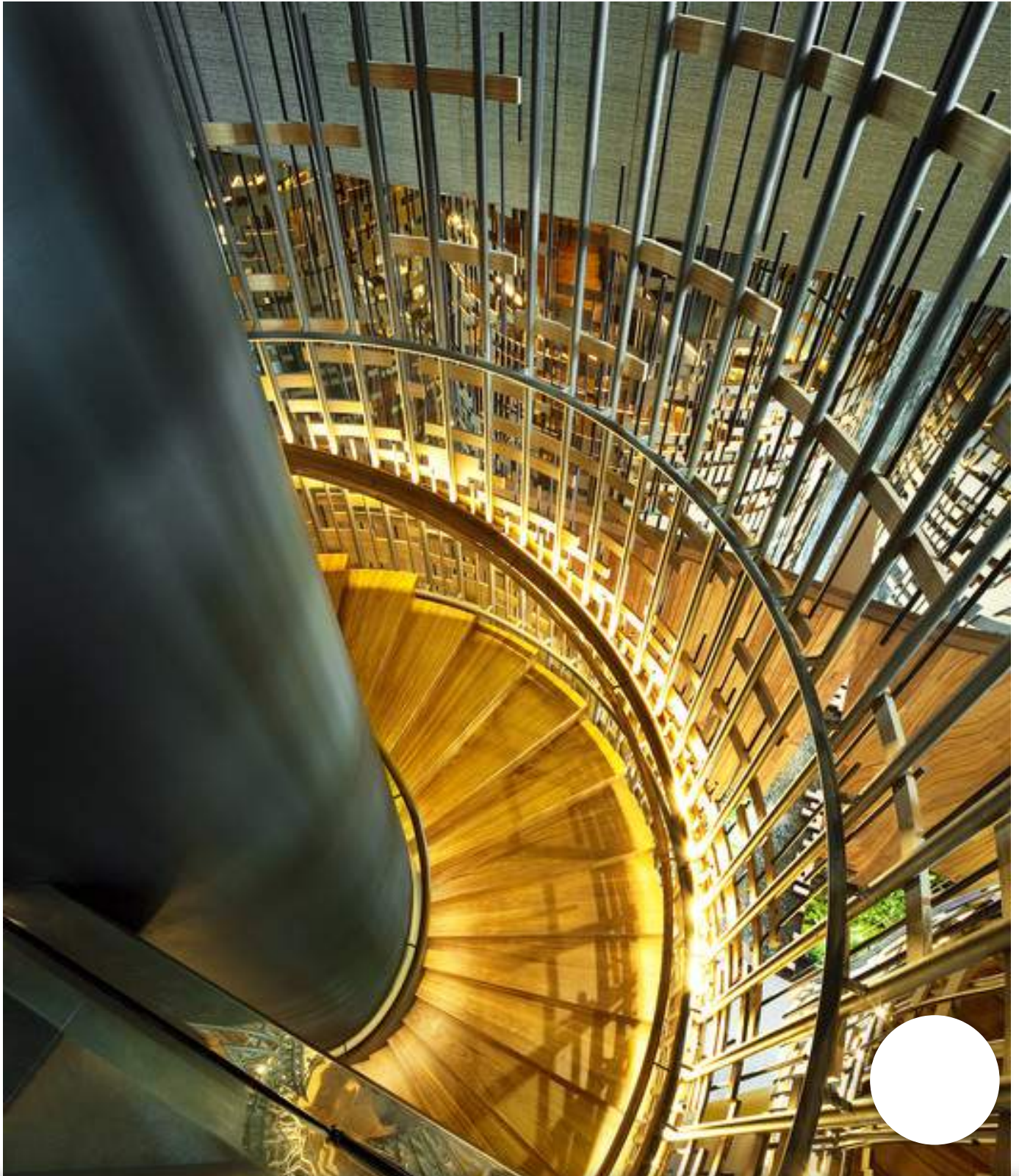




The podium is a remarkable piece of architectural theatre: it presents a monumental embellishment to the [Singapore](#) streetscape, and has thus immediately achieved something that no other recent building has even attempted. Referred to by WOHA as ‘topographical architecture’, the stratified undulating layers of pre-cast concrete wrap around, through and above a car park and the public areas of the hotel, as contour lines

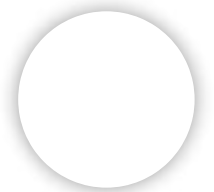


flow down from swimming pools and garden terraces on the podium roof, over the 'eroded rock-forms' of the striated mass and into crevices and ledges from which trees and vines can thrive.





The geological metaphor – green architecture at its most elemental – is one that WOHA have used in many, if not all of their large-scale public buildings, but here the geometry and the allusions are more nuanced and more complex. The snaking bands of fluted concrete weave through the length and breadth of the podium without interruption, and without acknowledgment of the boundaries between exterior and interior.

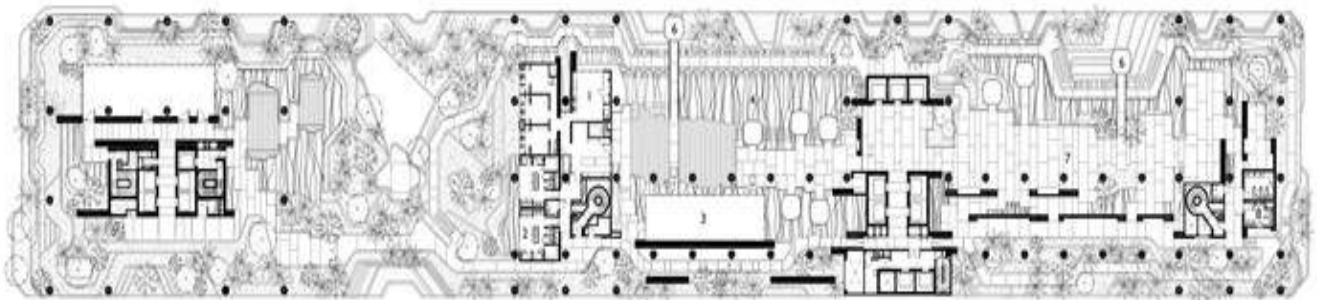




The architecture is fundamentally organic, but the fluid ge  
has a loftier sense of purpose. The ascending vistas, the scenes



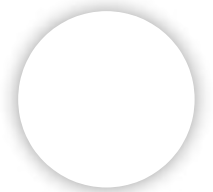
the fifth floor public area), whilst not spiritually preordained – the geometry is topographic, not cosmic – draw unambiguously from the heavenly gaze to be had within a mosque, a temple, or a church. It might be observed that the business hotel plays a similar role in contemporary culture to that of the cathedral in 17th century Europe, so it may not be impudent to describe WOHA's exuberant tableaux as Baroque: just a touch of Borromini for the 21st century.



The elaborately composed timber mouldings above the reception



interior design, thus incorporating the traditions of vernacular Asia within the modern city. However, the decorative forms of the PARKROYAL on Pickering tangibly pay homage to the lingering legacy of the mosques of the Moors and the Persians, to the exotic patterning of Isfahan and the Alhambra.

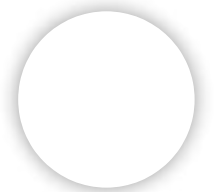




The great volume of the porte-cochere appears to be inordinately  
over-scaled in terms of its perceived functions – a drop-off zone for



purpose, a larger agenda. The space serves as a link, as an axis, between two distinctive and discrete areas of the city: Chinatown and the apartment blocks to the south, and Hong Lim Park and the commercial district to the north. A visual connection has been established by the monumental void, as it effectively constitutes a ceremonial gateway between the precincts.

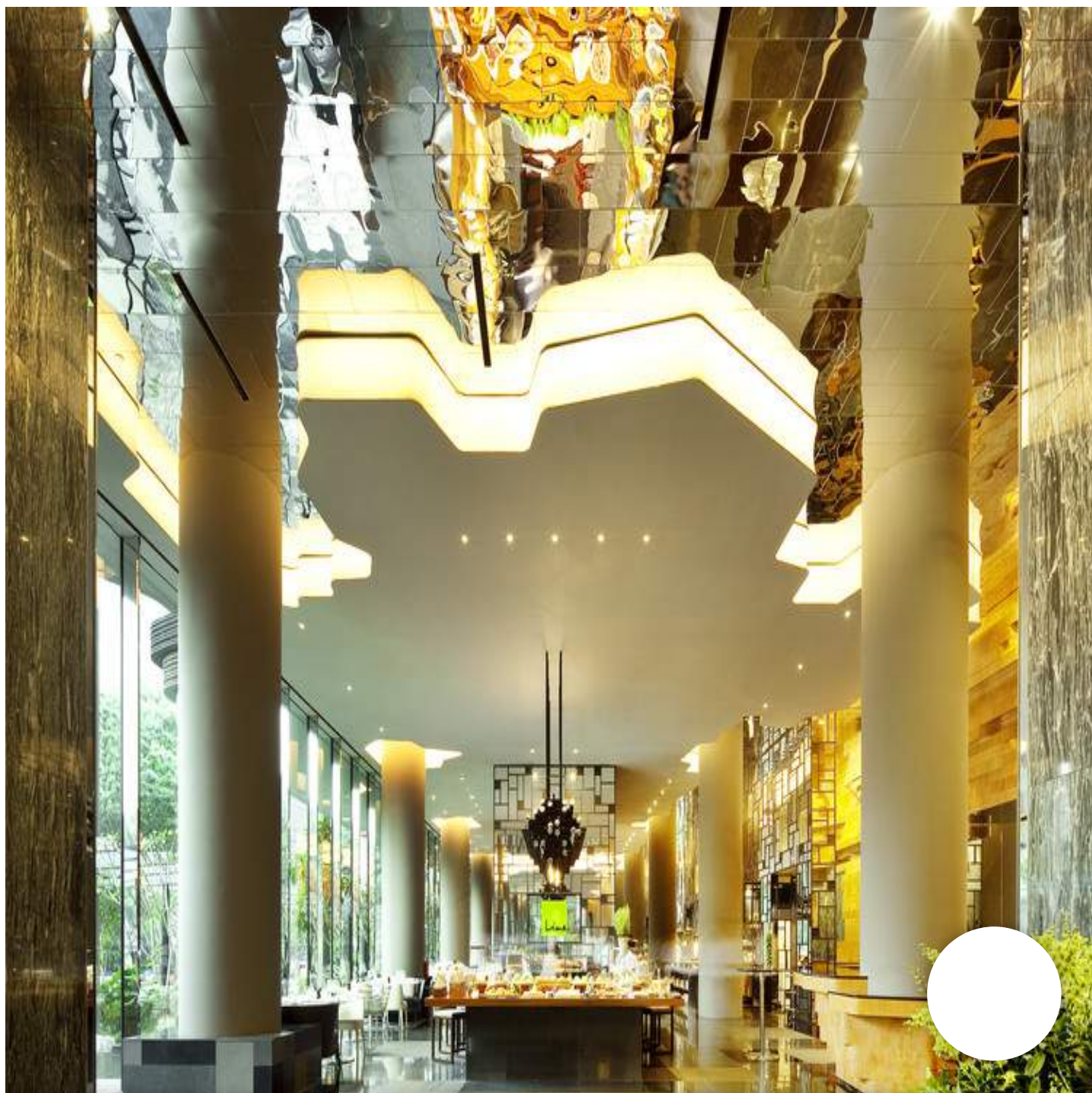




WOHA's desire to restore a feeling of community to Asian cities is  
crucial to their architecture, and reciprocity is intrinsic to their



PARKROYAL on Pickering is a very public and very Singaporean hotel. The scale of the architecture responds to the intricacies of the city: the height of the ubiquitous tree canopies, the size and orientation of the adjoining tower blocks, and the proportions of the historic streetscapes.





WOHA calibrated the massing and the details so that the entire development retains a human scale at all times, in stark contrast to all-pervading abstraction of the city's office buildings. The podium mirrors the density and height of the shophouses across Hong Lim Park, the raintrees of the park frame the podium and screen the blocks of guest rooms above, and the mass of the building is horizontally segmented by the great open verandah on the fifth floor and by the projecting shelves of the sky gardens above.



The over-riding concept was that of a building-as-garden for an idealised green city. As WOHA say... “We wanted to recreate an urban street scale, so that people walking and driving could pick up interesting details. And we wanted to work with the building’s mass and appearance, so we could avoid the usual city scale of building-as-silhouette, and so we could implement a garden-themed aesthetic.”

*Text by Patrick Bingham-Hall*



© Patrick Bing...



© Patrick Bing...



© Patrick Bing...



© Patrick Bing...



© Patrick Bing...



© Patrick Bing...



© Patrick Bing...



© Patrick Bing...



© Patrick Bing...



© Patrick Bing...



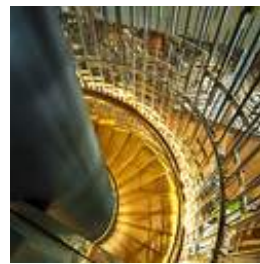
© Patrick Bing...



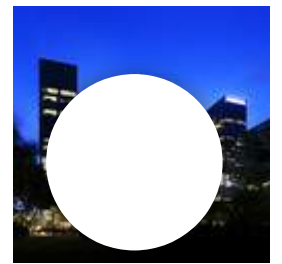
© Patrick Bing...



© Patrick Bing...



© Patrick Bing...



© Patrick Bing...





© Patrick Bing...



© Patrick Bing...



© Patrick Bing...



© Patrick Bing...



© Patrick Bing...



© Patrick Bing...



© Patrick Bing...



© Patrick Bing...



© Patrick Bing...



© Patrick Bing...



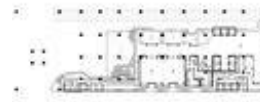
© Patrick Bing...



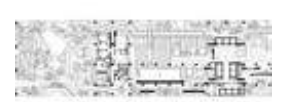
© Patrick Bing...



1st Storey Plan



2nd Storey Plan



5th Storey Plan



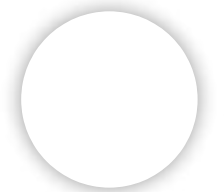
14th Storey Pl...

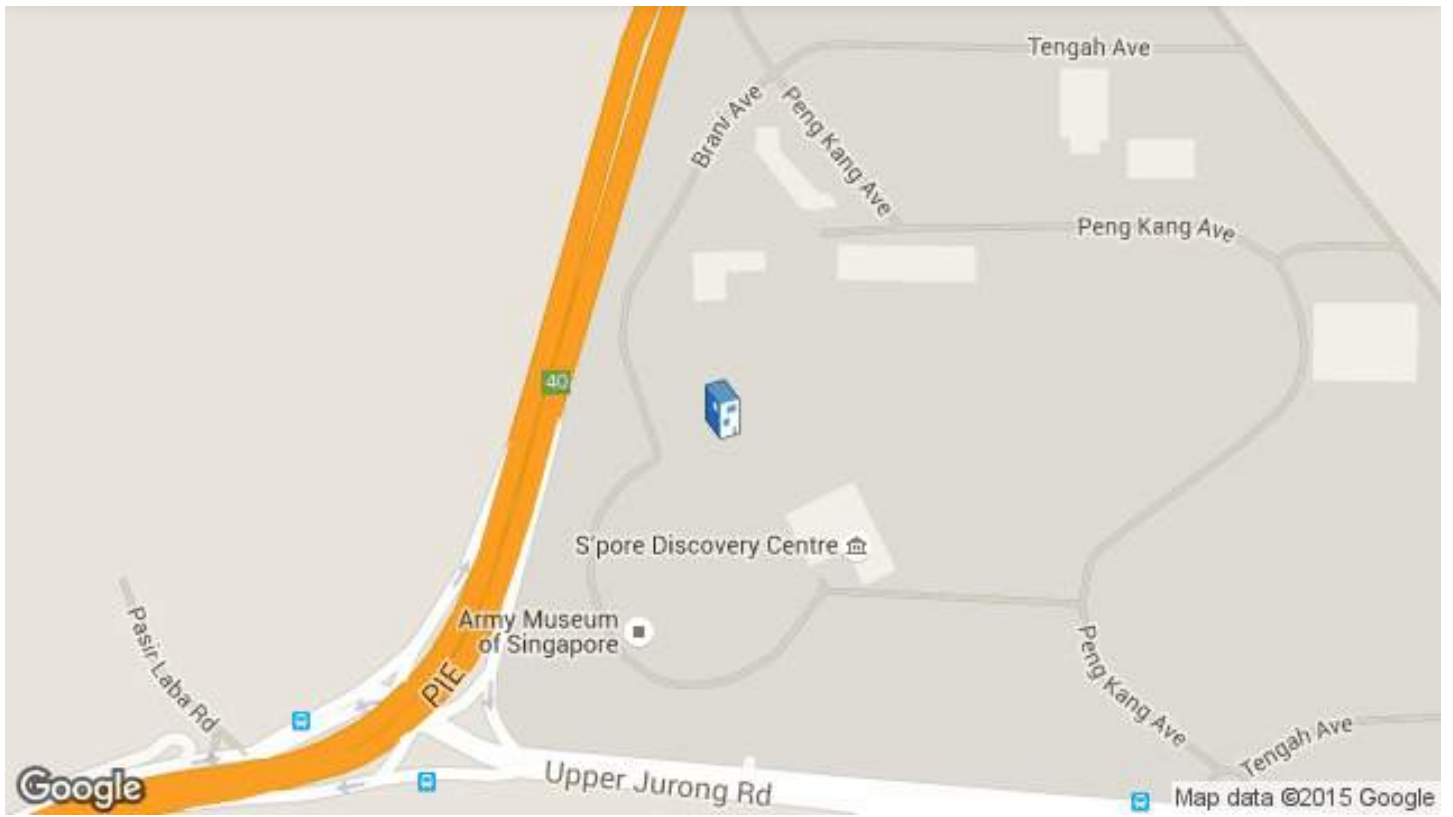


Elevation



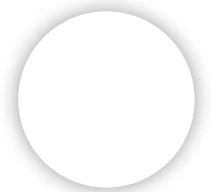
Section





Location to be used only as a reference. It could indicate city/country but not exact address.

[Share in Whatsapp](#)



## Product:

Concrete

## See more:

Projects

Built Projects

Selected Projects

Hospitality Architecture

Hotels

Dabas

Hotels and Restaurants

3D Modeling

Singapore

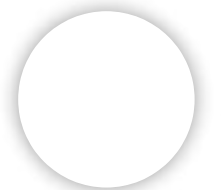
---

Cite: "PARKROYAL on Pickering / WOHA" 23 Apr 2013. ArchDaily. Accessed 15 Apr 2018. <<https://www.archdaily.com/363164/parkroyal-on-pickering-woha-2/>> ISSN 0719-8884

## BROWSE THE CATALOG



**Solo-M Acoustical Wood Panel**  
Decoustics





## **Metal 2.0**

Apavisa



## **Quadrillo® Acoustical Wood Panel**

Decoustics

## **LightFrame® Acoustical Fabric Ceiling and Wall System**

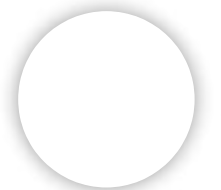
Decoustics

## **Tiles - Hydraulic**

Apavisa

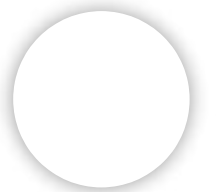
## **Tiles - Nanoconcept 7.0**

Apavisa



---

**Read comments**



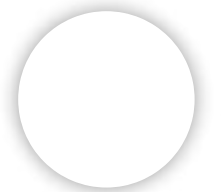


[ArchDaily](#) > [Projects](#) > [Master Plan](#) > [China](#) > [PLP Architecture](#) > [2020](#) > [PLP I](#)

# PLP Unveils Pearl River Delta's Tallest Building as Part of New Masterplan

13:30 - 11 February, 2016 | by [Eric Oh](#)

[Share in Whatsapp](#)





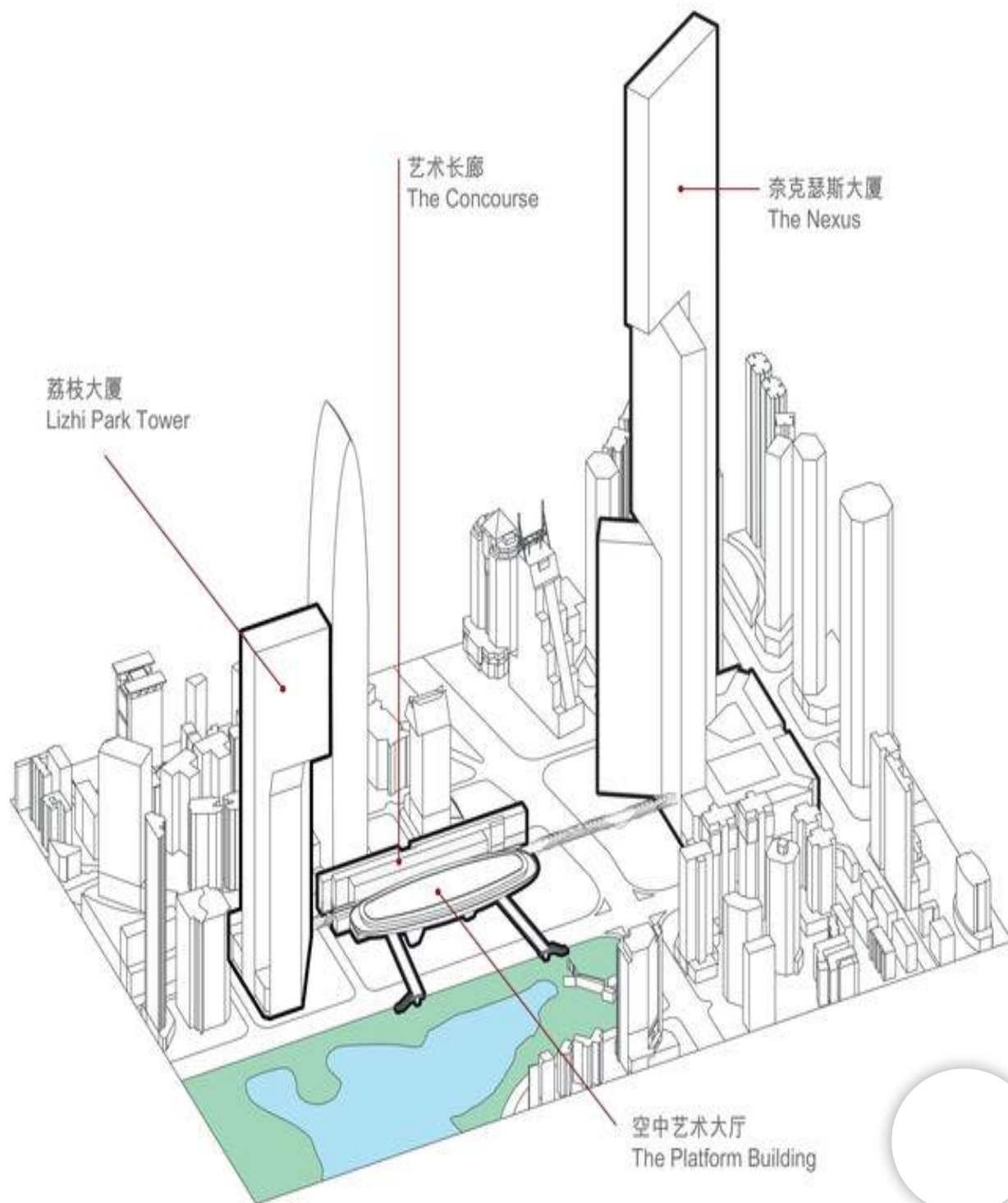


British firm [PLP](#) has unveiled their design for a large comp  
the heart of the [Pearl River Delta](#) in [China](#). The [master](#)



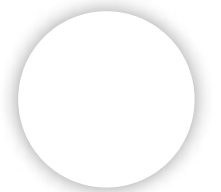
Arts, the Lizhi Park Tower, the Concourse, and the Nexus - a 600-meter tall office and hotel tower that will be the masterplan's centerpiece and the region's tallest skyscraper.

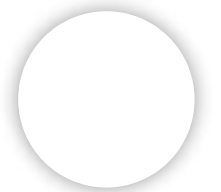
场地  
The Site

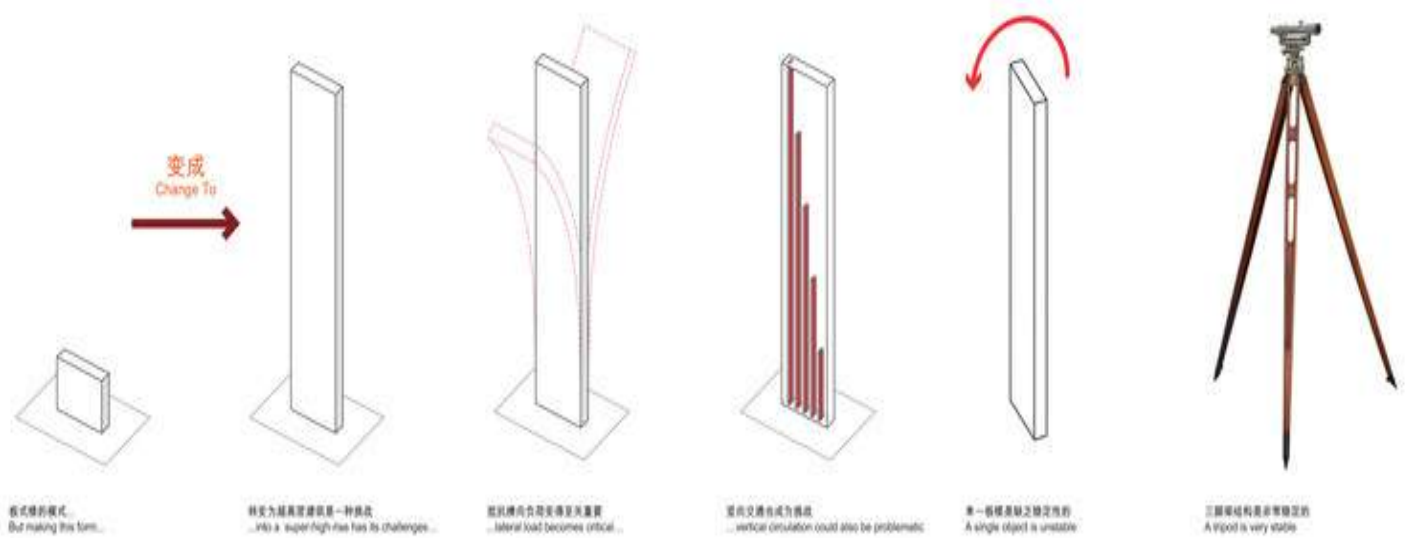




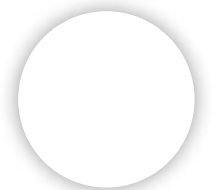
Avoiding the lateral loads and lifting requirements typical of bar or slab configurations, the Nexus Building's mass is redeveloped into several smaller volumes organized into families, similar to a tripod or outrigger. The resulting configurations all encourage natural lighting and cooling, flexibility and connections to the environment to create a pleasant work environment. As the tower moves up in height, it responds to different surroundings; in the lower third, it reacts to a nearby park; in the middle, to the urban context; and at the top, the Nexus Building is oriented toward the city and mountains.







Complementing the Nexus Building are three other structures. The Platform for Contemporary arts combines a **public space** with a performing arts **theater**. Housing 1700 seats, a music hall and a multi-purpose performance space and multiplex, the Platform is then lifted from the ground to free its footprint for public use. Water cascades from the platform to the nearby park, creating a “powerful new urban feature, an unforgettable civic spectacle.”





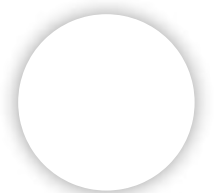
The Lizhi Park Tower is a 300 meter tall office tower, north of the  
Platform. The building is comprised of two interlocking volumes.



viewing from the park, while the upper volume cantilevers to “look” toward the middle of the site, balancing the uppermost portion of the Nexus building.



The Concourse connects all three buildings, also housing large scale retail and leisure facilities. Consisting of a main, elevated bridge that is suspended 7 meters above the street, as well as multiple off-shoot bridges, the Concourse is connected to the adjacent mall and the main road to the park.





---

## Architects

[PLP Architecture](#)

## Location

China

## Project Year

2020

## Photographs

[Luxigon](#)





Exterior Rend...



Exterior Rend...



Exterior Rend...



Aerial Render...



Exterior Rend...



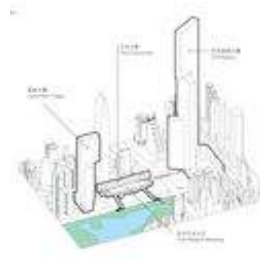
Exterior Rend...



Interior Rende...



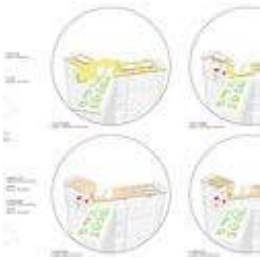
Interior Rende...



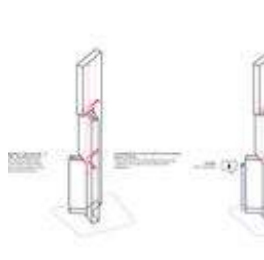
Master Plan. I...



Tower Use Dia...



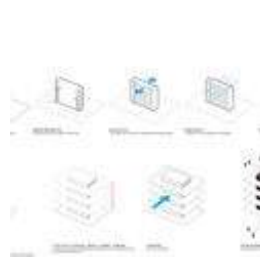
Sky Lobby Dia...



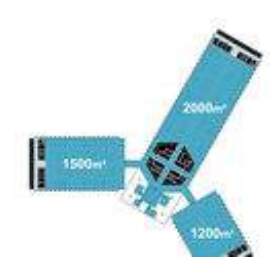
Vertical Circul...



Facade. Image...



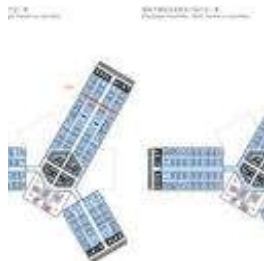
Nexus Form Di...



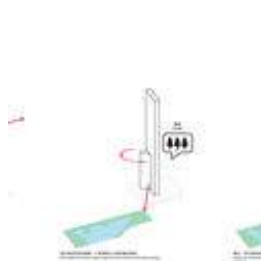
Floor Plate Siz...



Site Section. I...



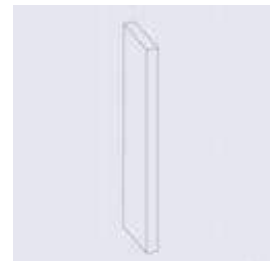
Floor Plate Fle...



Building Form...

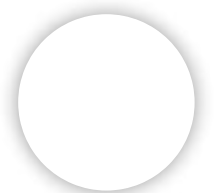


Building Form...



Courtesy of PL...

Share in Whatsapp



## See more:

Projects

Unbuilt Project

Urbanism

Urban Planning

Master Plan

Cultural Architecture

Theaters & Performance

Skyscrapers

Master Plan

PLP Architecture

Theater

Pearl River Delta

Skyscrapers

Public Space

Shenzhen Shi

Guangzhou Shi

China

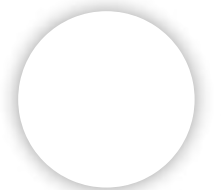
Cite: Eric Oh. "PLP Unveils Pearl River Delta's Tallest Building as Part of New Masterplan" 11 Feb 2016. ArchDaily. Accessed 15 Apr 2018.

<https://www.archdaily.com/781965/plp-unveils-nexus-tower-pearl-river-deltas-tallest-building-as-part-of-new-masterplan/> ISSN 0719-8884

## BROWSE THE CATALOG



Solo-M Acoustical Wood Panel





## Metal 2.0

Apavisa



## Quadrillo® Acoustical Wood Panel

Decoustics



## LightFrame® Acoustical Fabric Ceiling and Wall System

Decoustics

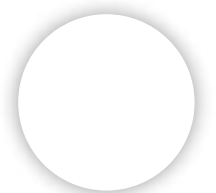


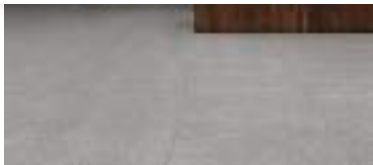
## Tiles - Hydraulic

Apavisa

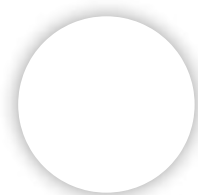


## Tiles - Nanoconcept 7.0





**Read comments**





Want to see the coolest refurbishment projects? [Click here.](#)

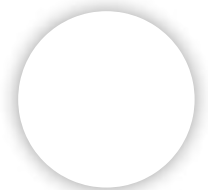


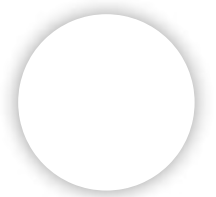
[ArchDaily](#) > [Projects](#) > [Hotels](#) > [France](#) > [Anne Démians](#) > [Quai Ouest - Riverbanks](#)

# Quai Ouest - Riverbanks Of The Meurthe / Anne Démians

04:00 - 26 March, 2015

[Share in Whatsapp](#)





---

## Architects

[Anne Démians](#)

## Location

Quai Sainte-Catherine, 54000 Nancy, [France](#)

## Design Team

Architectures Anne DEMIANS;<sup>[SEP]</sup>Philippe MONJARET, Project Director;<sup>[SEP]</sup>Typhaine BLANCHET, Project Manager

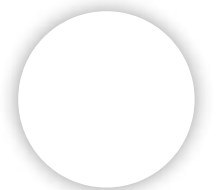
## Area

10200.0 sqm

## Photographs

[Jean-Pierre Porcher et AAD](#)

More Specs



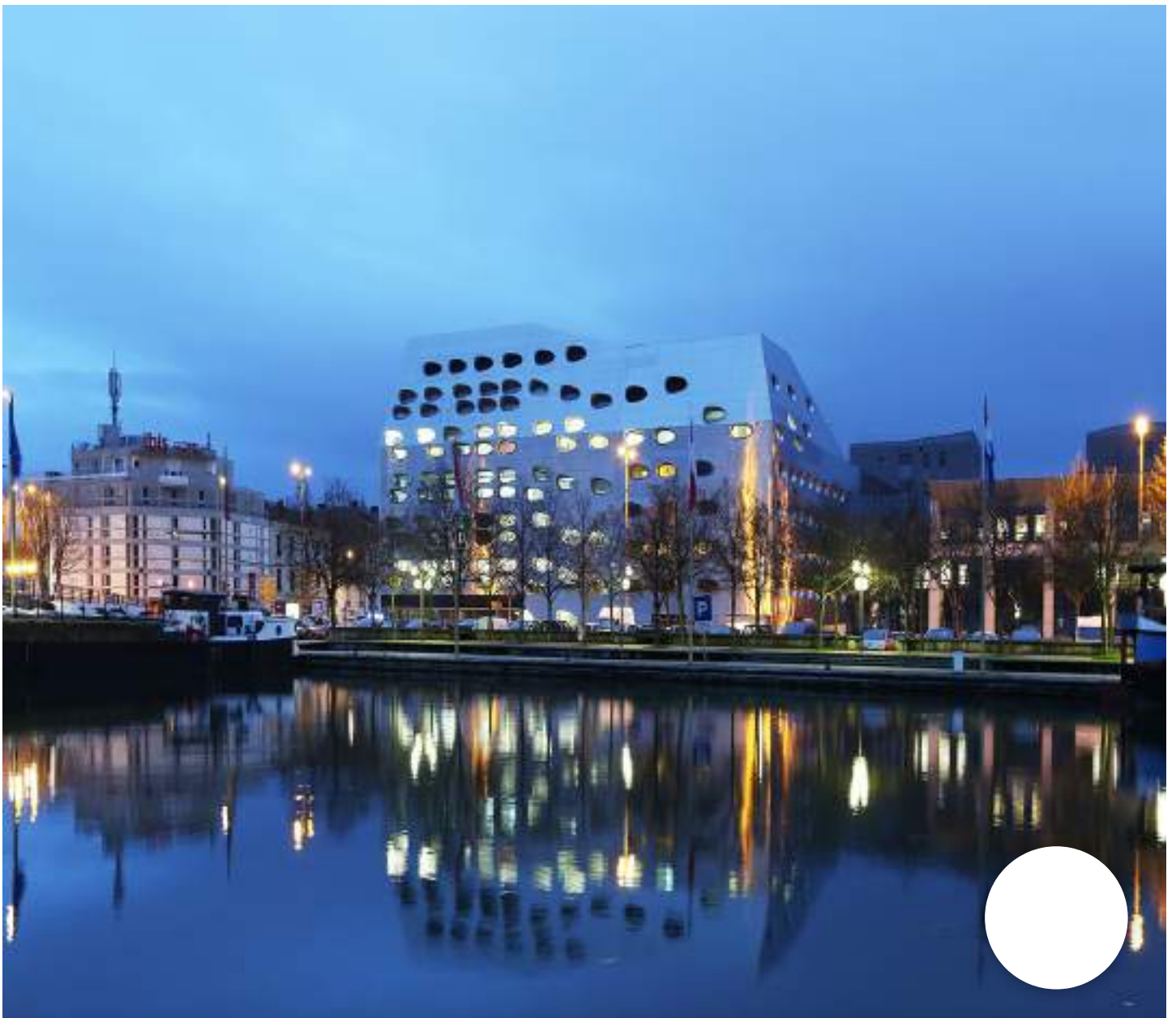




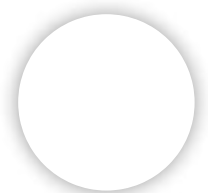
*Text description provided by the architects.* Throughout the various periods of its urban development, [Nancy](#)'s vision always preceded its architectural commissions. The city suburbs were initially attributed to the original castle town, and in the eighteenth century, a message of unity was asserted at the annexation of Lorraine to the Kingdom of France. And this was an opportunity to highlight the ducal power around an exceptional architecture



the twentieth century, the architecture in **Nancy** successfully integrated the richness of the École de **Nancy** in its constructions, just as it was able to promote new ideas on building and construction in the footsteps of the architect and designer Jean Prouvé, who was also mayor of **Nancy** after the Liberation. This identity and legacy continues today with the reconquest of the riverbanks of the Meurthe: the city of the twenty-first century.

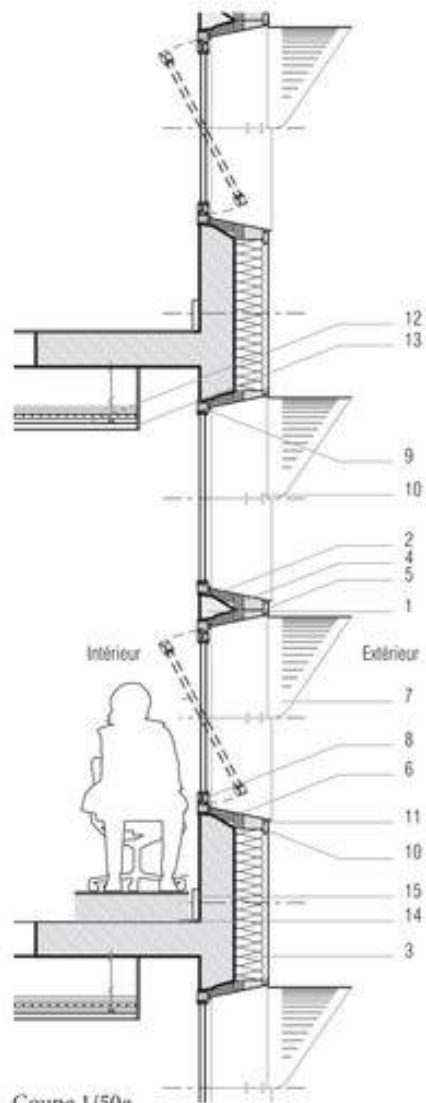
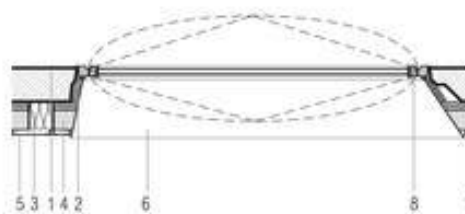


This project is unusual, not only because it is located five hundred metres away from the world famous Place Stanislas. It reflects an ambition that - had it not been integrated into its DNA from the outset - would have resulted in the creation of a banal building without meaning or history. The heaped impertinence of Quay Ouest reveals firstly the demands of the mayor of the time, André Rossinot, now President of the Greater [Nancy](#) Agglomeration. Secondly, the overlapping interests of a company, Pertuy Construction, eager to show its commitment to urban inclination, which includes the ethical desire to (re)combine architectural creativity with the sustainability of a modern building with low energy consumption. In other words, Quai Ouest represents the synthesis of political energy with the commitment of a private developer.





Plan 1/50e



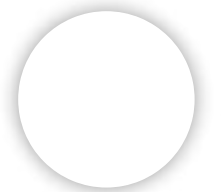
Coupe 1/50e

- 1 Voile béton autoportant épaisseur 200 mm
- 2 Isolation laine de roche 50 mm + pare-pluie HPV
- 3 Isolation laine de roche 160 mm + pare-pluie HPV
- 4 Pré-cadre bois 115 mm
- 5 Vêture en panneaux d'acier inoxydable épaisseur 15/10
- 6 Embrasure en acier inoxydable roulé épaisseur 15/10 collé au pré-cadre bois avec du mastic polymère + 2 vis de réglages
- 7 Brise-soteil en acier inoxydable perforé et route épaisseur 30/10
- 8 Châssis ouvrant basculant bois peint RAL 7035
- 9 Châssis fixe bois peint RAL 7035
- 10 Fixation des panneaux par vis inox à tête ronde et plate
- 11 Omega aluminium thermolaqué noir
- 12 Plafond rayonnant tubes métalliques thermolaqués SAPP
- 13 Jouée en médium peint
- 14 Dalles de moquette posée 600x600 mm
- 15 Plinthe technique

Quai Ouest is remarkable for its stainless steel outer shell and 650 oblong windows like eyes watching the city. This 10,000



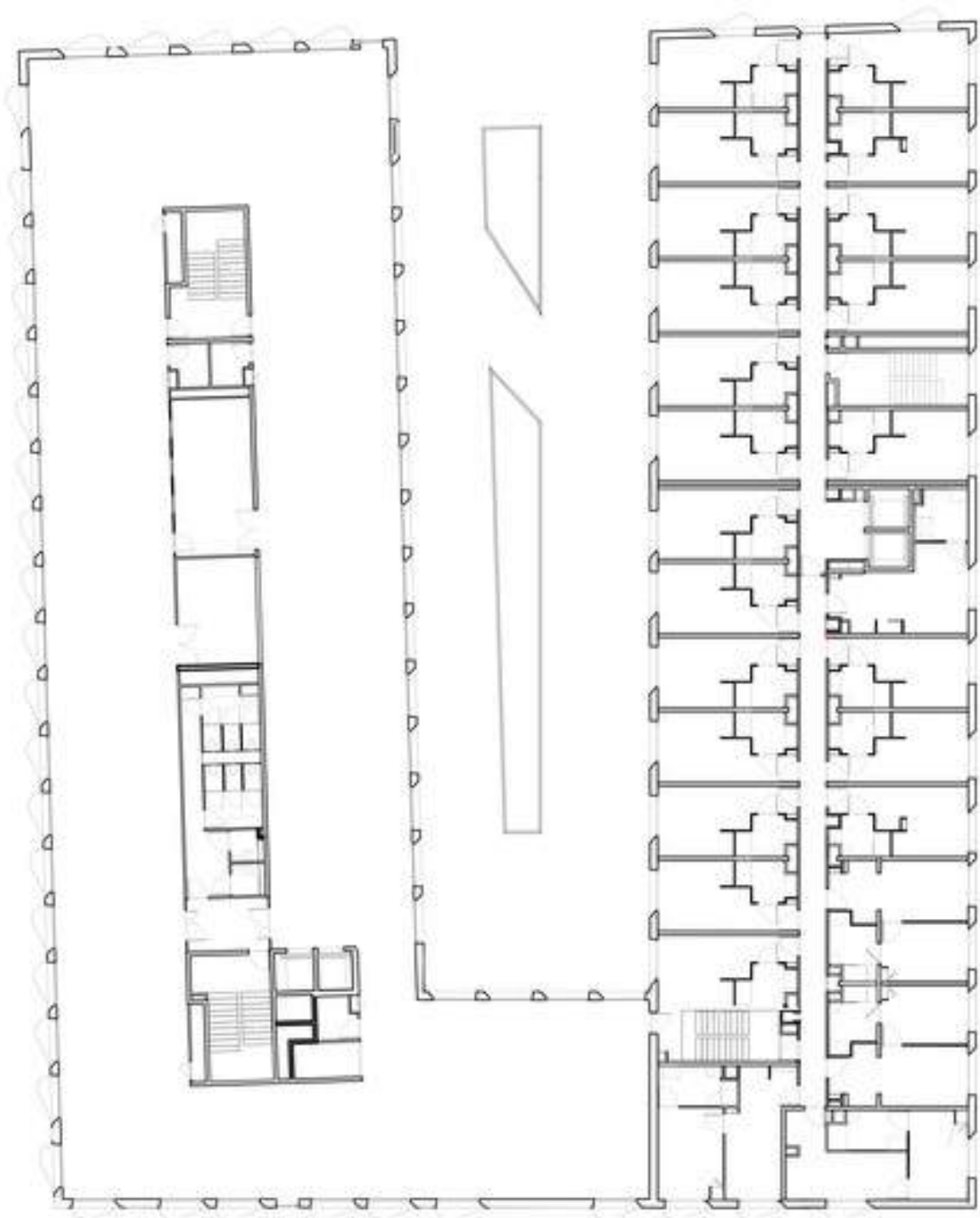
offices - including the Pertuy headquarters, a subsidiary of Bouygues Construction - a residential hotel and shops. Located on the outskirts of [Nancy](#), this former industrial wasteland of the twentieth century and of the Canal is at the very confluence of Charles III's city of [Nancy](#) and the new districts of the Meurthe riverbanks : 300 hectares contained within city-scale infrastructural boundaries in the process of urbanization that extend the reaches of the city by offering a new contemporary centrality.





Quai Ouest was previously the site of a gasworks. The site was sanitized, receiving an award by ADEME for its exemplary nature. Right on the edge of the banks of the Canal, it is at the intersection of the old city and the new city marked by Alexander Chemetoff's Water Gardens and the alignment of modern buildings. It is also located at the culmination of the historic commercial center of [Nancy](#) drawn by the St Jean and St Georges streets now crossed





Quay West dares to offer a contemporary articulation of d  
based on a delicate balance and coordinated architectural



of old [Nancy](#), the materials there are light in colour, they reflect and complement without literal imitation. The volumetrics respond and challenge, echoing the transversal altimetry.



Because of the disorganisation of the spaces along the Canal and this on a significant scale regarding the existing neighbourhood heritage, Quai Ouest aligns itself with [Nancy](#)'s historical past and





clarity. The volume of the building researching unity also resonates with those sectors that marked Nancy's public spaces since the eighteenth century such as the Opera or the L'Hôtel de la Reine close to City Hall and the Place Stanislas.



As the fusion operates horizontally between functions, the sought for this street angle does not need to rise above the height



single volume can remain comfortably within the maximum prospects and heights imposed. This controlled height facilitates the internal articulation of offices altimetry (held at R + 5) which includes the headquarters and residence of Pertuy Construction (maintained at R + 4) and functions with their optimum floor height ( 3.35m for offices and 2,74m for apartment hotels). This measure also creates a balance with residential buildings (in progress) and existing neighbouring offices.



Ultimately, the single volume rises or compresses itself to induce spatial dynamics in resonance with the site. The outer envelope itself accompanies this unique movement to reveal shop windows, office reception areas and hotel receptions. As for the Opera and the L'Hôtel de la Reine, the diversity melds into the same vibration as the full openings.





© Jean-Pierre ...



© Jean-Pierre ...



© Jean-Pierre ...



© Jean-Pierre ...



© Jean-Pierre ...



© Jean-Pierre ...



© Jean-Pierre ...



© Jean-Pierre ...



© Jean-Pierre ...



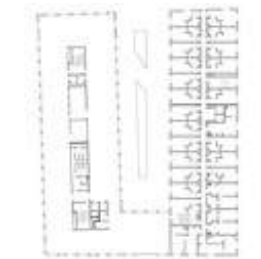
© Jean-Pierre ...



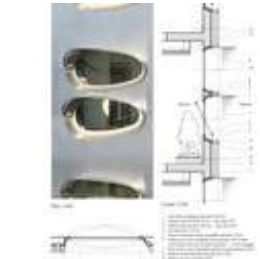
© Jean-Pierre ...



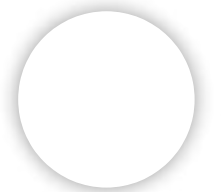
© Jean-Pierre ...

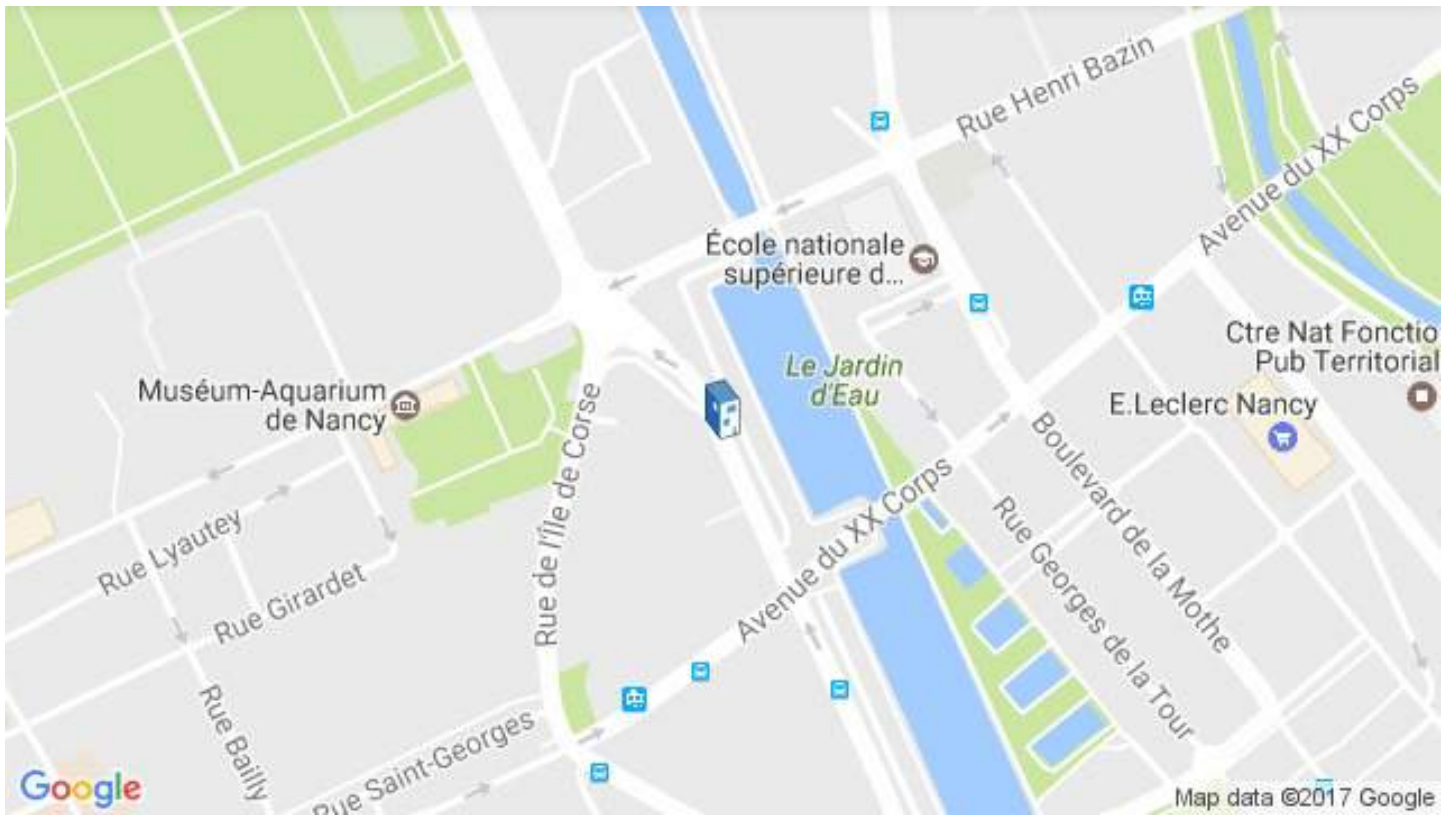


Floor Plan



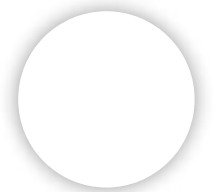
Detail





Location to be used only as a reference. It could indicate city/country but not exact address.

[Share in Whatsapp](#)



## Products:

Steel

Concrete

## See more:

Projects

Built Projects

Selected Projects

Hospitality Architecture

Hotels

Mixed Use Architecture

Offices

Office buildings

Nancy

Offices

Hotels and Restaurants

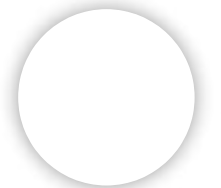
Mixed Use

Office Buildings

France

---

Cite: "Quai Ouest - Riverbanks Of The Meurthe / Anne Démians" 26 Mar 2015. ArchDaily. Accessed 15 Apr 2018. <<https://www.archdaily.com/610837/quai-ouest-riverbanks-of-the-meurthe-anne-demians/>> ISSN 0719-8884





## Solo-M Acoustical Wood Panel

Decoustics



## Metal 2.0

Apavisa



## Quadrillo® Acoustical Wood Panel

Decoustics



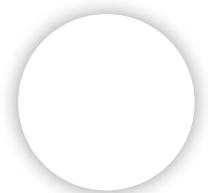
## LightFrame® Acoustical Fabric Ceiling and Wall System

Decoustics



## Tiles - Hydraulic

Apavisa

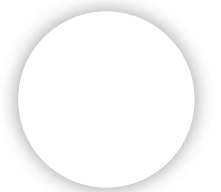




## Tiles - Nanoconcept 7.0

Apavisa

[Read comments](#)







See our immersive, inspiring 360 videos. [Click here.](#)

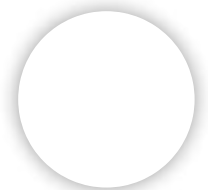


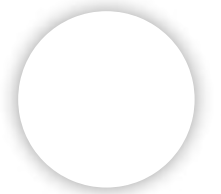
[ArchDaily](#) > [Projects](#) > [Hotels](#) > [Sweden](#) > [Karolina Keyzer](#) > [2013](#) > [Quality H](#)

# Quality Hotel Friends / Karolina Keyzer + Wingårdhs

01:00 - 29 September, 2014

[Share in Whatsapp](#)





---

## Architects

[Karolina Keyzer, Wingårdhs](#)

## Location

Råsta Strandväg, Solna, [Sweden](#)

## Area

21935.0 sqm

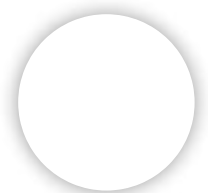
## Project Year

2013

## Photographs

[Tord-Rickard Söderström, Filip Mesko](#)

More Specs





*Text description provided by the architects.* The house with  
thousand eyes creates an illusion; like waves from a point in



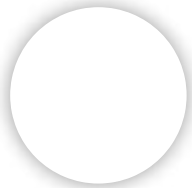
distance. It makes the stiff block soft, even wet. The impression is formed by windows in three different sizes: 1.4, 1.7 and 2 meters in diameter. The variations furnish the standardized rooms with a kind of individuality, especially in corners.



The 400-room hotel is built next to Friends Arena, a 65 000 sports and event venue, and the upcoming Mall of Scandinavia



Choice Hotels and designated for their business range sector, with special attention to conferences.





© Tord-Rickar...



© Filip Mesko



© Tord-Rickar...



© Tord-Rickar...



© Tord-Rickar...



© Tord-Rickar...



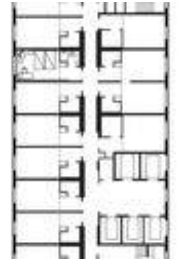
© Tord-Rickar...



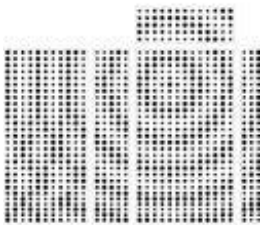
© Tord-Rickar...



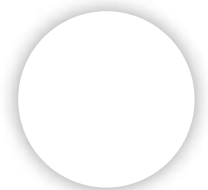
Site Plan

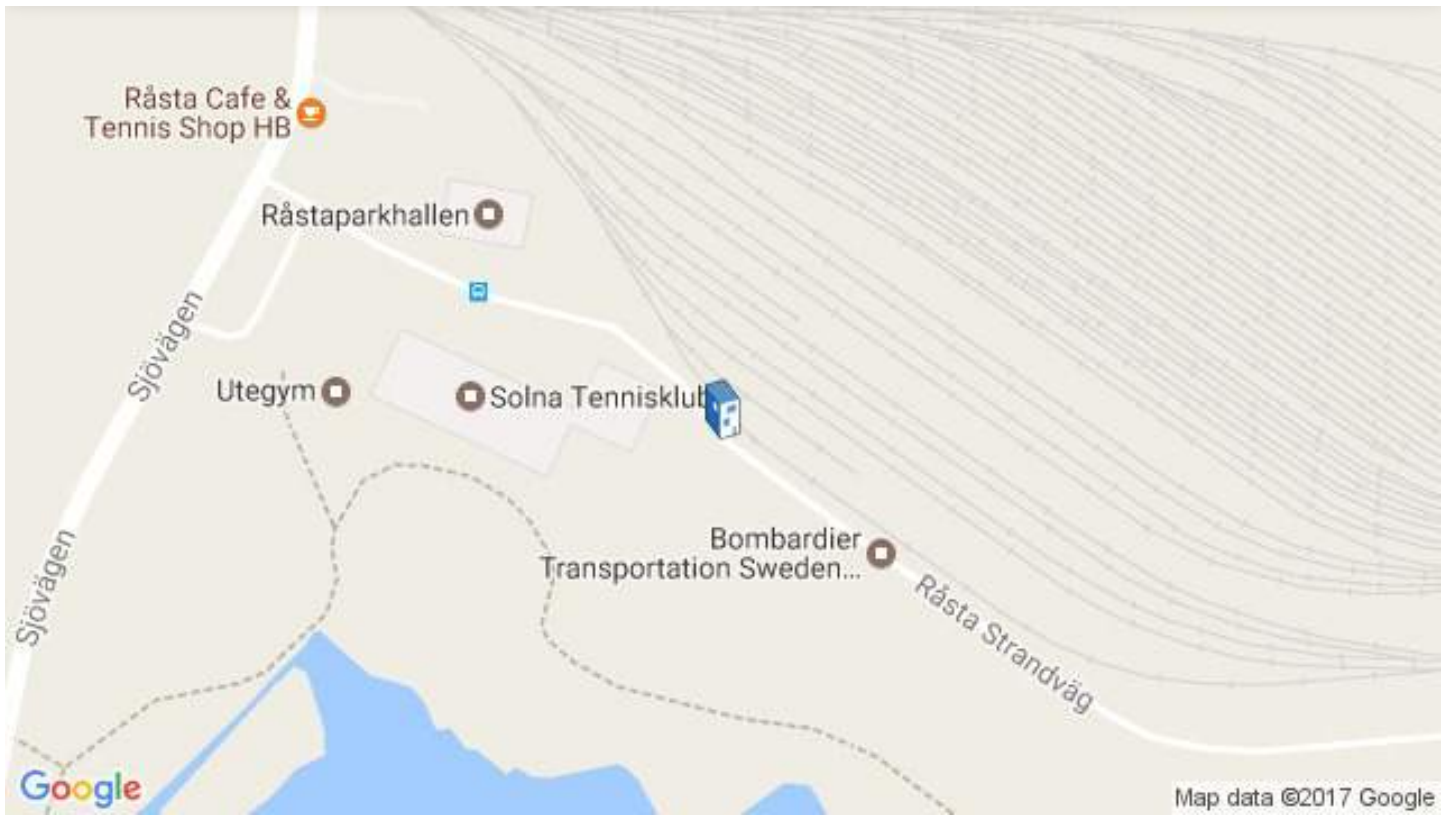


Floor Plan



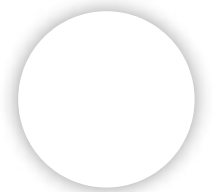
Elevation





Location to be used only as a reference. It could indicate city/country but not exact address.

[Share in Whatsapp](#)





## Product:

Concrete

## See more:

Projects

Built Projects

Selected Projects

Hospitality Architecture

Hotels

Solna

Hotels and Restaurants

Sweden

---

Cite: "Quality Hotel Friends / Karolina Keyzer + Wingårdhs" 29 Sep 2014.  
ArchDaily. Accessed 15 Apr 2018.

<<https://www.archdaily.com/550536/quality-hotel-friends-karolina-keyzer-wingardhs/>> ISSN 0719-8884

## BROWSE THE CATALOG



Rondolo™ Acoustical Wood Panels

Decoustics





## Tiles - Hydraulic

Apavisa



## Profile Façade System

Technowood



## Siding Façade System

Technowood

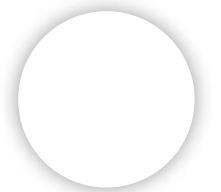


## Tiles - ArchConcept

Apavisa

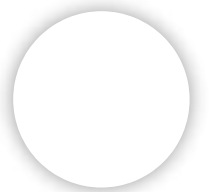


## Tiles - Nanofusion 7.0





**Read comments**



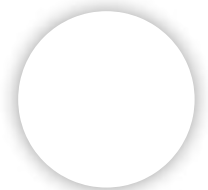


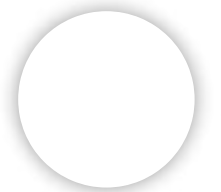
ArchDaily > Projects > Hotels > China > Goettsch Partners > 2017 > Rosewoo

# Rosewood Sanya and Sanya Forum / Goettsch Partners

19:00 - 13 April, 2018

[Share in Whatsapp](#)





---

## Architects

[Goettsch Partners](#)

## Location

Sanya, [China](#)

## Area

151500.0 m<sup>2</sup>

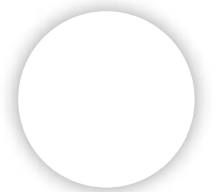
## Project Year

2017

## Photographs

[Shen Zhonghai](#), [Chen Ji](#), [Owen Raggett](#)

More Specs





*Text description provided by the architects.* Located at the southern end of Hainan Island in the city of [Sanya](#), China, the complex focuses on two conceptual design elements: a “lighthouse” for the hotel and serviced apartment tower and a complimentary “rock formation” for the convention center.



Haitang Bay, its glowing beacon visible from any direction. A unique resort in the sky, the building is organized vertically, with the arrival sequence, landscape, and incorporation of water and views all considered integral to the guest experience.

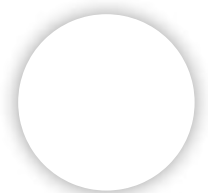


The amenity-rich resort is purposely designed to be intimate and





ocean views and individual terraces, some with their own plunge pool. The 465 serviced apartments are located in the main tower, which sits immediately behind the low, linear bar of hotel rooms. The top of the tower features a multilevel club for the exclusive use of the apartment residents and culminates in the iconic “lighthouse beacon.” The [Sanya](#) Forum is designed as a premier convention facility, catering to national and international economic and political summits, as well as a variety of other meetings and special events.



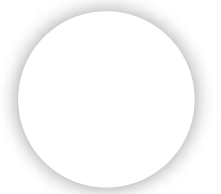
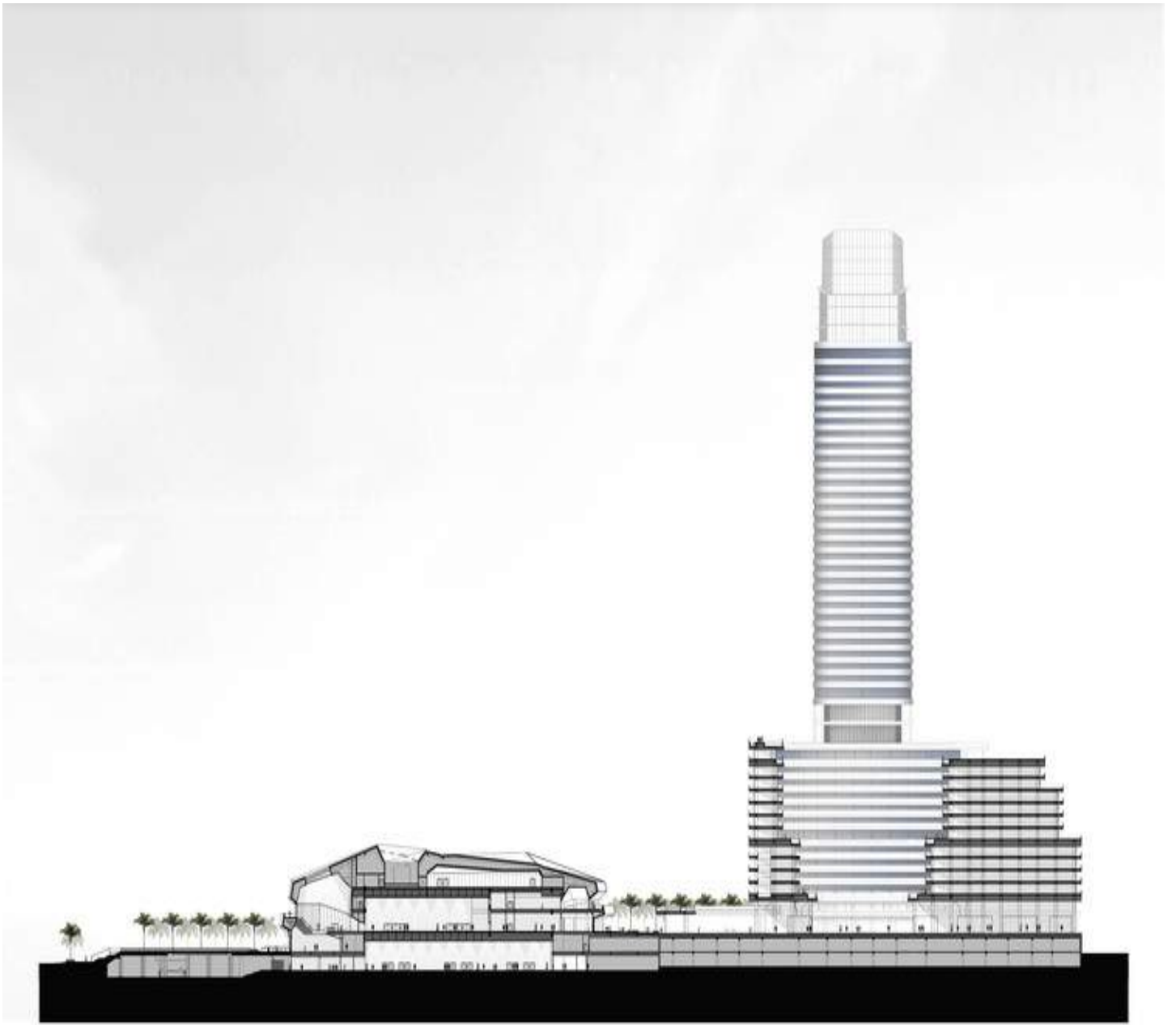


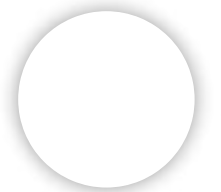
The building's rock-like mass is designed to be bold yet approachable. Once inside, a unique volume of space opens across multiple levels, with areas for meetings and formal ceremonies. The multifunctional building accommodates large events with an exhibition hall, a ballroom, and forum space that can serve formal state gatherings, as well as private weddings and parties. The building also provides a variety of other meeting



area at the top with an outdoor terrace overlooking the ocean. The design culminates in the private rooftop garden, with exclusive spaces juxtaposed against expansive ocean views.









© Shen Zhong...



© Chen Ji



© Shen Zhong...



© Chen Ji



© Shen Zhong...



© Shen Zhong...



© Owen Ragg...



© Owen Ragg...



© Shen Zhong...



© Shen Zhong...



© Owen Ragg...



Site Plan



Ground Floor ...



Amenities Lev...



Typical Floor ...



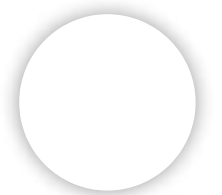
North Elevation



Section



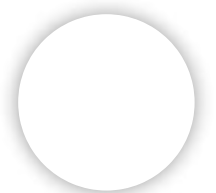
Section





Location to be used only as a reference. It could indicate city/country but not exact address.

[Share in Whatsapp](#)



## Products:

Glass

Concrete

## See more:

Projects

Built Projects

Selected Projects

Hospitality Architecture

Hotels

Sanya

China

---

Cite: "Rosewood Sanya and Sanya Forum / Goettsch Partners" 13 Apr 2018.  
ArchDaily. Accessed 15 Apr 2018.

<<https://www.archdaily.com/890384/rosewood-sanya-and-sanya-forum-goettsch-partners/>> ISSN 0719-8884

## BROWSE THE CATALOG



**Claro® Acoustical Panels**

Decoustics







## Tiles - Iconic Brown

Apavisa



## Nuvola Acoustical Free Hanging Clouds

Decoustics



## Solo-M Acoustical Wood Panel

Decoustics



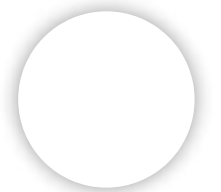
## Tiles - Nanoconcept 7.0

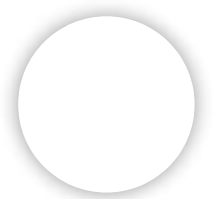
Apavisa



## Tiles - Nanofactory 7.0

Apavisa







Find the most inspiring products in our [Product Catalog](#).

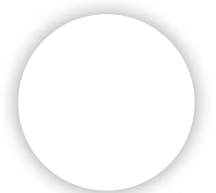


[ArchDaily](#) > [Projects](#) > [Apartments](#) > [Singapore](#) > [WOHA](#) > [2015](#) > [SkyVille / V](#)

## SkyVille / WOHA

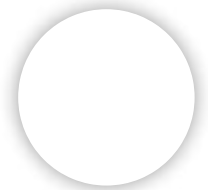
21:00 - 8 December, 2016

[Share in Whatsapp](#)





Architects



## Location

85 Dawson Rd, Singapore 141085

## Team

Richard Hassell, Wong Mun Summ, Chan Ee Mun, Pearl Chee Siew Choo, Dharmaraj Subramaniam, Ho Soo Ying, Lim Yin Chao, Ranjit Wagh, Sabrina Foong, Daniel Fung Khai Meng, Tan Yi Qing, Nixon Sicat, Kwong Lay Lay, Sivakumar Balaiyan, Dennis P. Formalejo, Lau Wan Nie, Wan Pow Chween

## Area

29392.0 m<sup>2</sup>

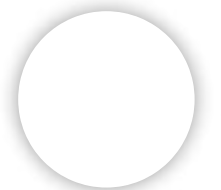
## Project Year

2015

## Manufacturers

Vansen Cultured Marble, Chuan Wang Parquet, Rigel Technology, Soon Li Stainless Steel Works, Ideal Plumbing, CLF Shutters Asia, LHL International, Ong Brothers Tiling & Const, Cascade Sanitaryware, New Tokyo Wall Decoration, FUJITEC, Prefab Technology, Capstone Const, Playpoint, Prowerkze, Bao Lee Doors, VICPLAS Holdings

**More Specs**





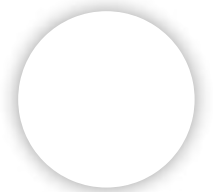
*Text description provided by the architects.* The project, located in a high-rise area of mixed private and public housing,



living, variety and sustainability are central themes. The project is un gated; all common areas are fully open to the public.



The central innovation is the public, external, shared spaces interwoven through the cluster of towers from the ground to the roof. Each home is part of a Sky Village comprising 80 homes sharing a sheltered community garden terrace. They are designed to foster interaction and be part of daily life. Every resident passes through, or looks over, this space on the way from the lift to apartment and can greet their fellow villagers, see children playing, and residents chatting.



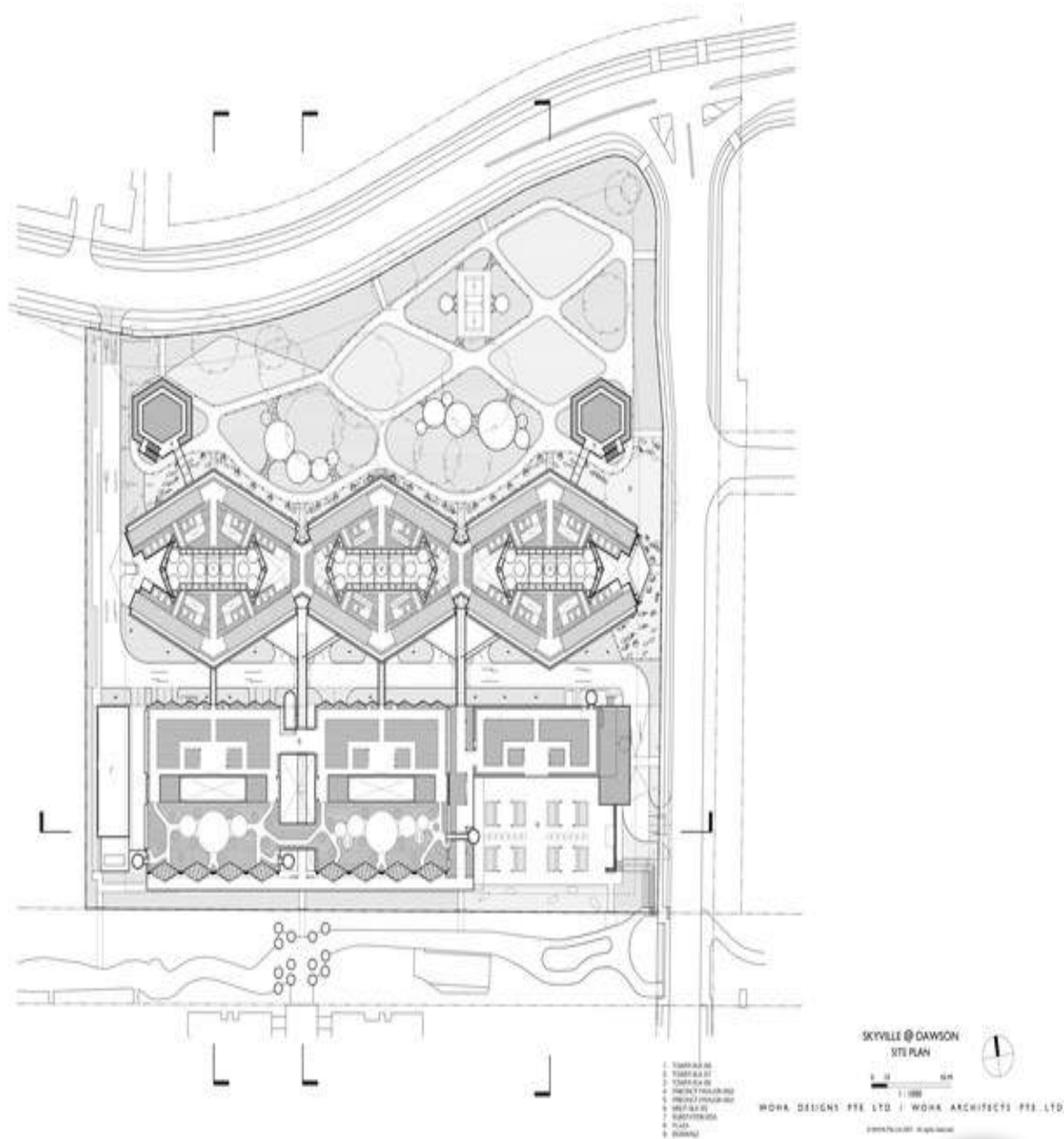




Other community areas include a plaza located along a public linear park flanked by supermarket, coffee shop and retail spaces and a childcare facility. Community living rooms - large double volume verandah spaces - at ground level provided with seating



play and fitness areas, courts and lawns are bordered by a 150m long bioswale. The rooftop public skypark, open 24 hours, incorporates a 400m jogging track under pavilions capped by a photovoltaic array.



The design offers residents 3 plan variations for each size of unit.

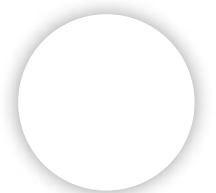


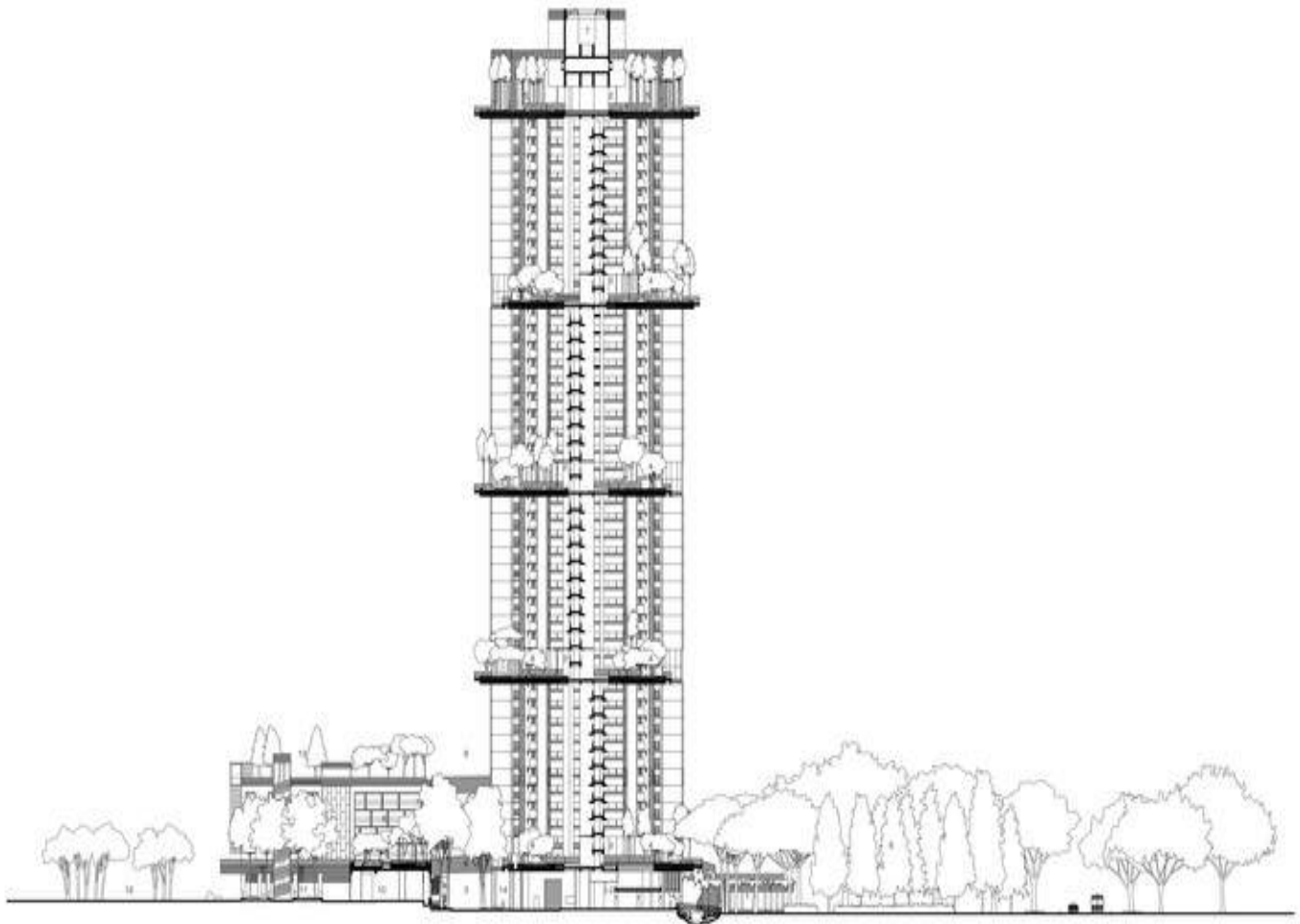
spaces, thereby eliminating waste and making allowance for diverse family sizes, various lifestyles (e.g. home office/loft-living) and future flexibility.



neighbourhood, and the art has been cast into the precast walls. The building design also includes blue glass elements that recall the old Hokkien dialect “Lam Po Lay”, which means blue glass district - the older generation public housing in the area had blue windows. Magnificent old rain trees were retained and incorporated into the landscaping.

Awarded a Platinum Greenmark rating - Singapore's highest and the first for public housing - the project adopts robust passive design strategies including naturally lit and ventilated lobbies, staircases, access corridors. All apartments are naturally ventilated and due to the open, airy design, a substantial proportion of units have not installed air-conditioning. Photovoltaics on the roof power the common facilities. The design is fully precast and prefabricated, reducing waste and errors on site. The design creates variety through the re-arrangement of the modules, through colour, light and shade.





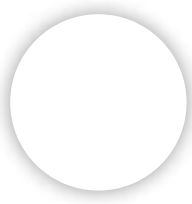
SKYVILLE @ DAWSON  
SECTION B1



WOHA DESIGNS PTE LTD | WOHA ARCHITECTS PFE LTD

© 2014 WOHA ARCHITECTS

- 1 PROJECT PARKING
- 2 LIFT CORE
- 3 SERVICE CORE
- 4 RFP CORE
- 5 RESIDUAL FOR THE PEOPLE
- 6 LANDSCAPE FARM
- 7 CORONA LINE (RFL)
- 8 JAK SPICE
- 9 CANTINA
- 10 BAKING HALL
- 11 PLAZA
- 12 GROUND LEVEL FARM
- 13 LANDSCAPE FARM/ROOF
- 14 COMMUNITY LAND/ROOF





Courtesy of W...



Courtesy of W...



Courtesy of W...



Courtesy of W...



Courtesy of W...



Courtesy of W...



Courtesy of W...



Courtesy of W...



Courtesy of W...



Courtesy of W...



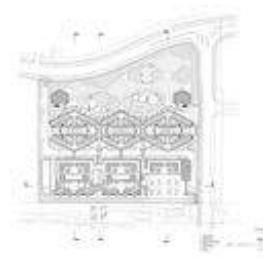
Courtesy of W...



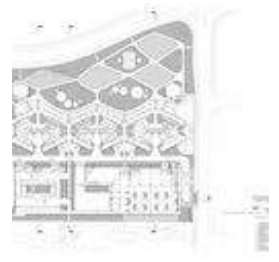
Courtesy of W...



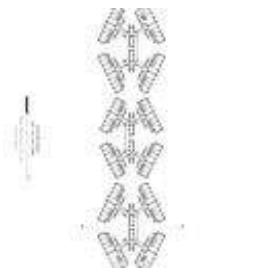
Courtesy of W...



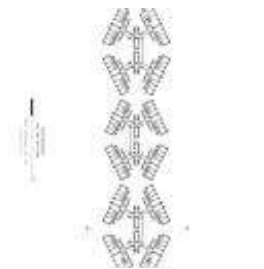
Site Plan



1st Storey Plan



16 - 24 Storey ...



38 - 46 Storey ...



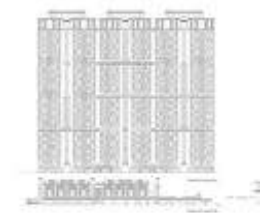
Section



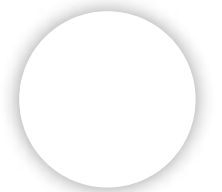
Elevation

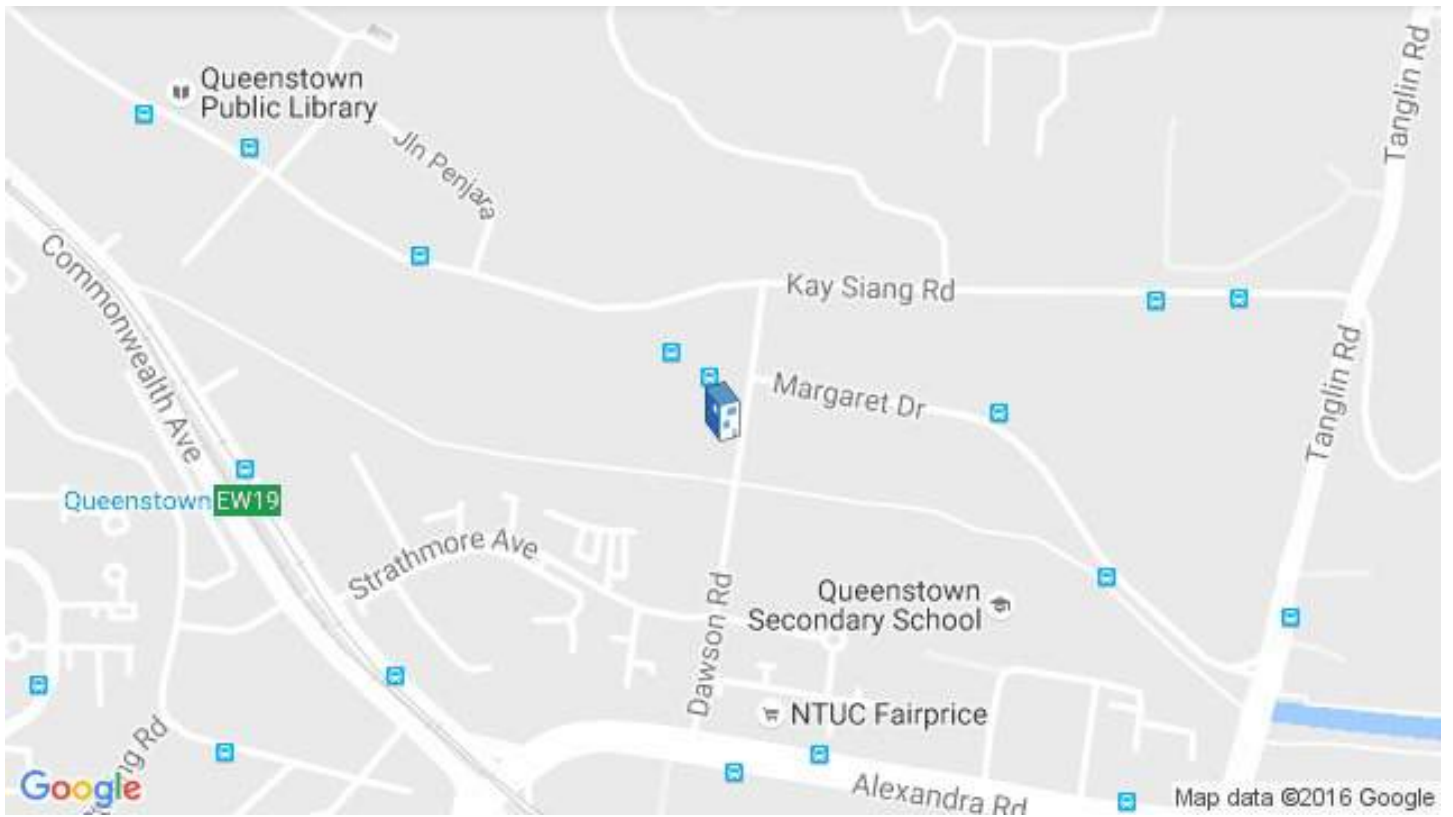


Elevation



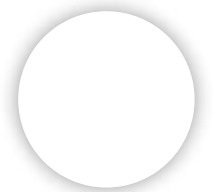
Elevation





Location to be used only as a reference. It could indicate city/country but not exact address.

[Share in Whatsapp](#)



## Product:

Concrete

## See more:

Projects

Built Projects

Selected Projects

Residential Architecture

Housing

Apartments

Singapore

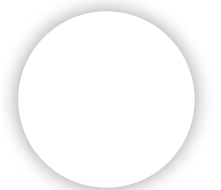
---

Cite: "SkyVille / WOHA" 08 Dec 2016. ArchDaily. Accessed 15 Apr 2018.  
<<https://www.archdaily.com/800832/skyville-woha/>> ISSN 0719-8884

## BROWSE THE CATALOG



**Solo-M Acoustical Wood Panel**  
Decoustics







## **Metal 2.0**

Apavisa



## **Quadrillo® Acoustical Wood Panel**

Decoustics



## **LightFrame® Acoustical Fabric Ceiling and Wall System**

Decoustics



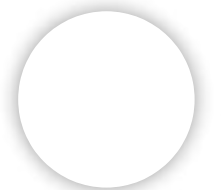
## **Tiles - Hydraulic**

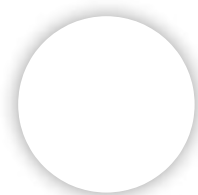
Apavisa



## **Tiles - Nanoconcept 7.0**

Apavisa





# Hotel is a Modern Indian Palace

inhabitat ARCHITECTURE

NEWS

ENVIRONMENT

Search articles



11/24/2010 under [Architecture](#), [Green Building](#) 1 Comments



by Bridgette Meinhold

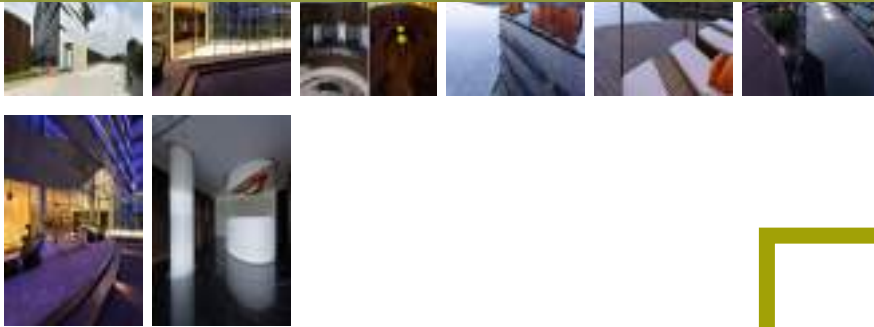
## VIEW SLIDESHOW

Andhra Pradesh, India recently announced the completion of the country's first LEED Gold certified hotel, the Park Hotel, Hyderabad. Described as a 'Modern Indian Palace', the new **eco hotel** designed by **Skidmore, Owings and Merrill LLP (SOM)** combines local craftsmanship and high performance design into a 250 room hotel. The hotel is designed to be ultra modern and sustainable, yet it is influenced strongly by local vernacular architecture - read on for a look inside!



**HOW TO: Gro**  
**Avocado Tree**  
**in an Avocado F**

**How one coul**  
**adapted a 20**  
**square-foot ti**  
**house for the**



Subscribe to get free weekly updates on the latest news on innovation and design.

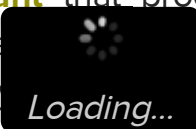
Email Address



SUBSCRIBE

The Park Hotel in Hyderabad is distinguished by its impressive facade of perforated metal, which serves as a sun and rain screen that protects the building's high-performance windows. Daylighting, orientation, solar gain and local climate were all taken into account during the design of the building to maximize light and minimize heat gain. The mostly square volume wraps around an elevated large courtyard that provides protection for the hotel's pool, restaurants, bars, retail shops, and other mixed-use programs. Rooms enjoy expansive views of Hussain Sagar Lake and the city yet are shielded from receiving much sun.

SOM collaborated with Stevens Institute of Technology's Product Architecture Lab in Hoboken, New Jersey in order to minimize the hotel's energy consumption — and they succeeded in reducing it by 20%. The team also collaborated on incorporating an on-site waste water treatment plant that processes both gray water for reuse and waste water where it is released back into the city's sewer system. The hotel is



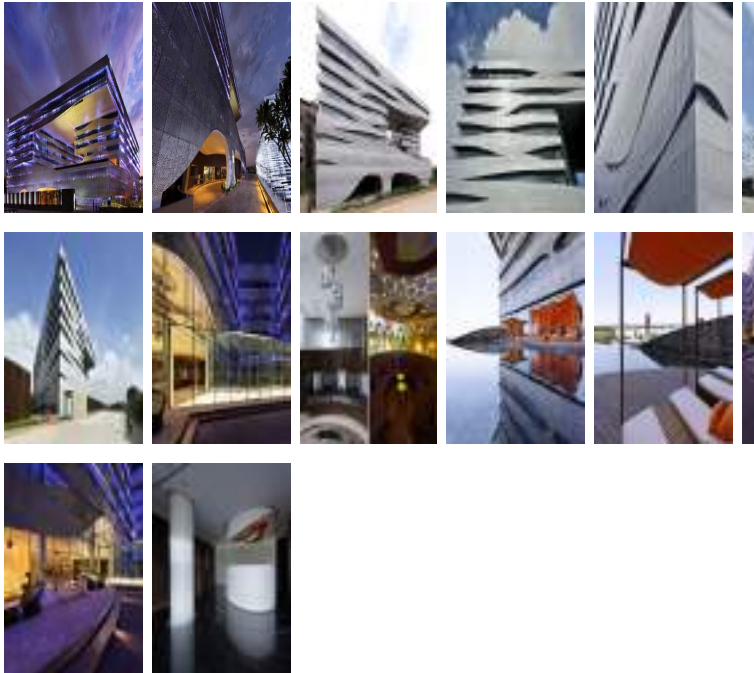


from Cityscape India.

## + SOM

Via **eVolo**

Images © Pallon Daruwala and Bharath Ramamr



Subscribe to get free weekly updates on the latest news on innovation and design.

Email Address

**SUBSCRIBE**

**VIEW COMMENTS (1)**





<http://www.atkinsglobal.com/en-GB/projects/songjiang>

## Songjiang InterContinental Hotel



---

### KEY FACTS

**Location:**  
Shanghai

**Country/Reg**  
China

**Client:**  
Shanghai Shi  
Experience Di

**Type:**  
Futuristic 5-st  
side of  
an abandoner

**Size:**  
49,409 sq.m

**Status:**  
Under Constr

**Awards:**  
MIPIM Asia Av  
- Best Chines  
International

A quarry is a rather unlikely destination for a swank hotel. Perhaps that's what makes the concept of Songjiang Quarry Hotel so awe-inspiring. Indeed, design and engineering consultancy Atkins won an international design competition for the five-star hotel back in August 2006 and their vision is in the process of being transformed into reality by Chinese developer Shimao. The satellite town of Songjiang is approximately 35 km from Shanghai city centre and well connected to existing transport infrastructure. Sprawling landscapes and natural beauty have made it a popular tourist destination and the district has been designated as an important local and national leisure resource. The design of the Songjiang Quarry Hotel is meant to reflect the natural landscape of the quarry. The winning concept was inspired by the stunning location and the natural environment of the rocky cliffs, waterfalls and surrounding hills. The project will see the construction of a five-star, 383-bedroom hotel built into the side of a disused, 90 m deep, water filled quarry. The hotel will be operated by Intercontinental as a sport and leisure-oriented spa resort. The concept design has attracted tremendous interest across the world. Apart from the green roof, it is intended that many features, ranging from geothermal energy to solar energy utilization, are included in this project. The reasons for the green roof are two-fold: it is both for the building to fit seamlessly into the surrounding environment and become a 'natural' part of the local topography, and also for its eco-friendly and energy saving qualities.

Apart from an awe-inspiring location, a cascading waterfall from the top of the quarry into the pool below it, and striking waveform architecture, the Songjiang Quarry Hotel will have plenty to offer. The futuristic hotel features underwater public areas, guest rooms and conference facilities for up to 1,000 people, and also includes sport and leisure centres. Two underwater levels will house a restaurant and guestrooms facing a 10 m deep aquarium. The lowest level of the hotel will contain a leisure complex with a swimming pool and water-based sports. An extreme sports centre for activities such as rock climbing and bungee jumping will be cantilevered over the quarry and accessed by special lifts from the water level of the hotel. Also, a transparent glass 'waterfall' located in the centre of the building is a major architectural feature. By building the hotel where it is, designers and developers hope to prevent further damage to the ecological environment around it. The Songjiang Quarry Hotel may become just about the greenest hotel ever made.



Competition

- Best Hotel A International Competition

- Best Hotel A International Competition

- The World's Architecture Award

RELATED SE

- [Buildings](#)
- [Hospitality](#)
- [Tourism & Le](#)

RELATED SE

- [Architecture](#)
- [Building desi](#)
- [Landscape d](#)

RELATED PF

- [Gucheng Isla Resort, Lishu](#)
- [Park Royal T](#)
- [Regatta Apa](#)
- [Sheraton Zh:](#)

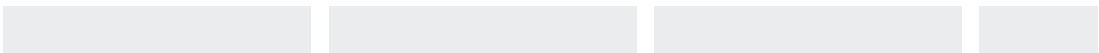
CONTACT

ASIA PACIFI

**Bertil de Kl**  
Director, Arc  
Landscape,

13F, Wharf 1  
Harbour City  
Kowloon, Hc  
T: +852 2972  
E:  
[bertil.dekleyn@atkins.com](mailto:bertil.dekleyn@atkins.com)

RELATED PROJECTS





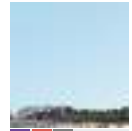
**Gucheng Island Five-Star  
Resort, Lishui**



**Park Royal Taihu Hotel**



**Regatta Apartments**



**Sheraton Z**







Find the most inspiring products in our [Product Catalog](#).

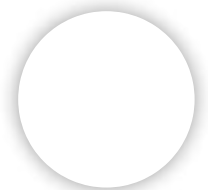


[ArchDaily](#) > [News](#) > [SPOL Architects Receives Approval for Oval-Shaped Hotel N](#)

# SPOL Architects Receives Approval for Oval-Shaped Hotel Near Oslo Airport

08:00 - 18 September, 2016 | by [Sabrina Santos](#)

[Share in Whatsapp](#)





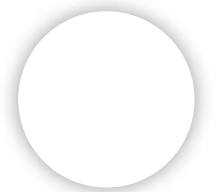
[SPOL Architects](#)' *First Hotel OSL*, a hotel near the newly extended [Oslo](#) Airport, has received planning approval after a unanimous vote in the Jessheim City Council. Designed to be a destination in itself, the hotel will be an environmentally friendly oval shape, featuring 300 rooms and a large atrium for sports activities.

Acting as a “meeting place for globe trotters,” the hotel aims to become a shared space for shared experiences for travelers.





Located on the site of former farmland between suburban housing and fields, the hotel will create a porous edge between the city of Jessheim and the highway system.

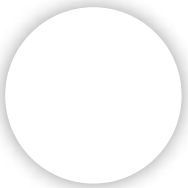


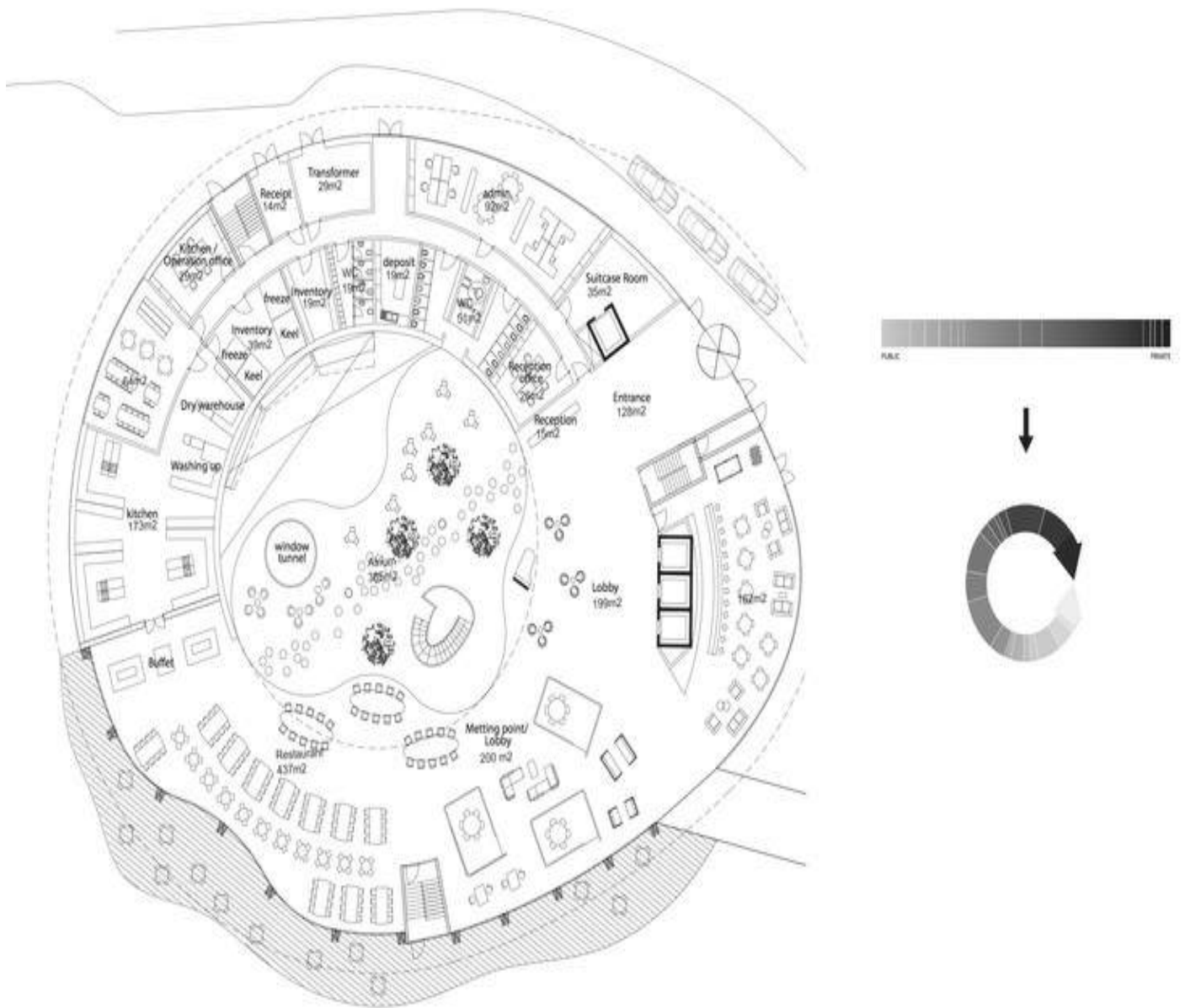


*“ The soft shape accentuated through a double curvature in the exterior cladding plays up Jessheim’s undulating fields, dark and furrowed like newly ploughed farmland, explained the architect.*



The interior of the building is connected by one large, arced corridor, which curves around a central space covered by a glass roof that will accommodate facilities like a climbing wall.



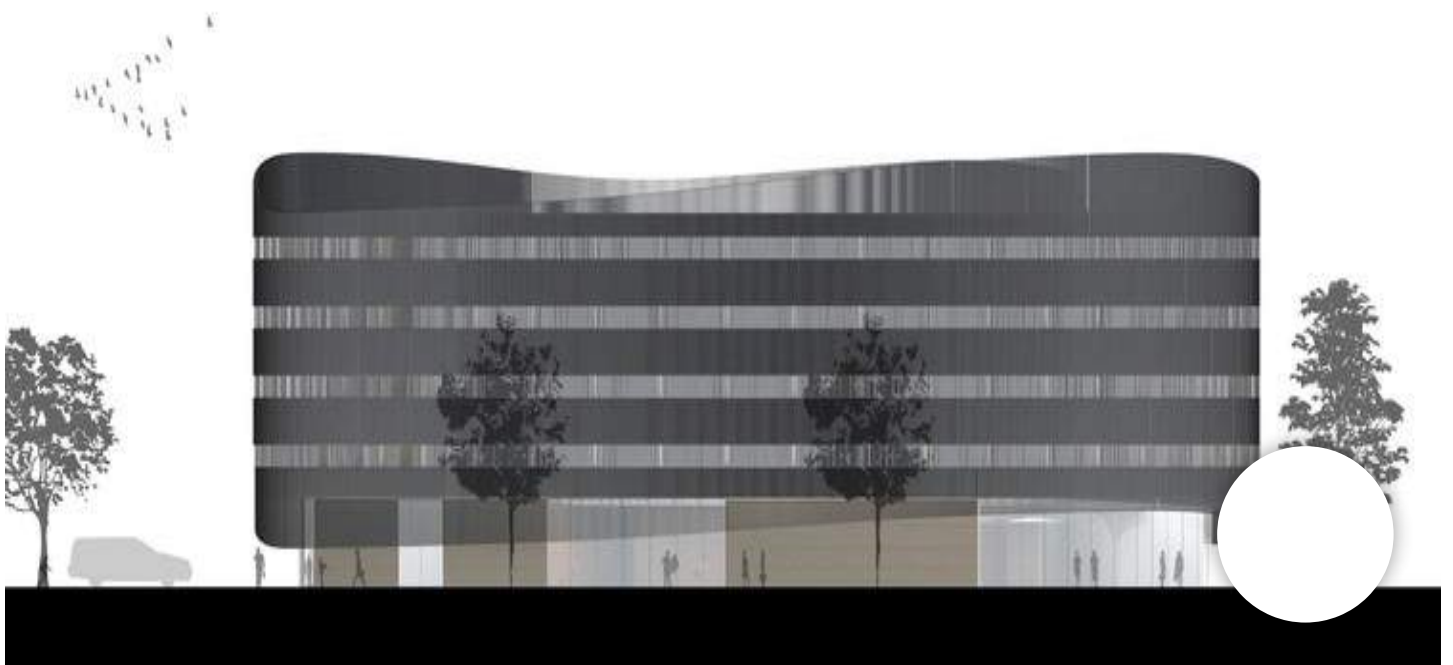


*“ A vertical cladding, partly overlapping the windows, accentuates the building, exaggerating curvature and shape. Windows form continuous strips around the building give wide angled views to the landscape. The*



*dark charcoal wooden exterior, contrasting the haphazard coloring of the surroundings, creates a tension opposed to the warm wood of the interior space. The cladding continues up and above the hotel floors in a curved movement, softening the shape and protecting a rooftop sheltered from dominant wind directions, allowing this exterior space to be used for an outdoor - described the architect in a press release.*

”



Construction on the hotel is set to begin within the year.

News via [SPOL Architects](#).



Courtesy of SP...



Courtesy of SP...



Courtesy of SP...



Courtesy of SP...



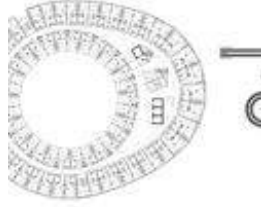
Courtesy of SP...



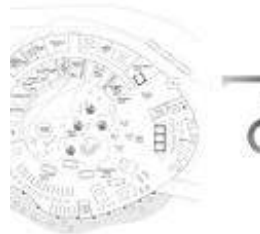
Courtesy of SP...



Courtesy of SP...

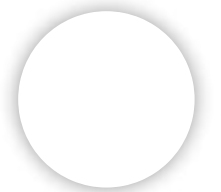


Courtesy of SP...



Courtesy of SP...

[Share in Whatsapp](#)





## See more:

News

Architecture News

Hotels

Unbuilt

News

Oslo

Norway

Architecture News

SPOL Architects

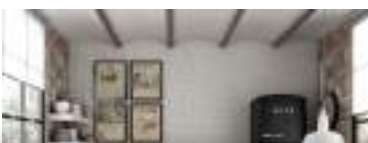
Cite: Sabrina Santos. "SPOL Architects Receives Approval for Oval-Shaped Hotel Near Oslo Airport" 18 Sep 2016. ArchDaily. Accessed 15 Apr 2018.  
<<https://www.archdaily.com/795429/spol-architects-receives-approval-for-oval-shaped-hotel-near-oslo-airport/>> ISSN 0719-8884

## BROWSE THE CATALOG



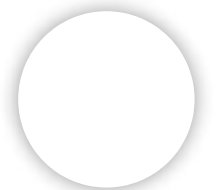
### Rondolo™ Acoustical Wood Panels

Decoustics



### Tiles - Hydraulic

Apavisa





## **Profile Façade System**

Technowood



## **Siding Façade System**

Technowood



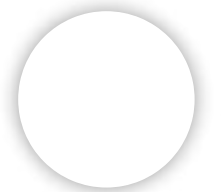
## **Tiles - ArchConcept**

Apavisa



## **Tiles - Nanofusion 7.0**

Apavisa




[Comments](#)

[Community](#)

 [Login](#) ▾

 [Recommend](#)

 [Share](#)

[Sort by Newest](#) ▾

Start the discussion...

LOG IN WITH

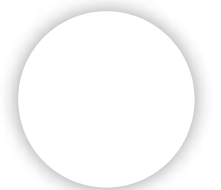
OR SIGN UP WITH DISQUS 

Name

Be the first to comment.

 [Subscribe](#)  [Add Disqus to your site](#) [Add Disqus](#) [Add](#)

 [Privacy](#)



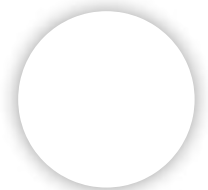


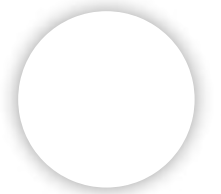
ArchDaily > Projects > Hotels > Cape Verde > Ramos Castellano Arquitectos > :

# Terra Lodge Hotel / Ramos Castellano Arquitectos

15:00 - 15 November, 2017

[Share in Whatsapp](#)





---

## Architects

Ramos Castellano Arquitectos

## Location

Mindelo, [Cape Verde](#)

## Lead Architects

Eloisa Ramos, Moreno S. Castellano

## Area

600.0 m<sup>2</sup>

## Project Year

2017

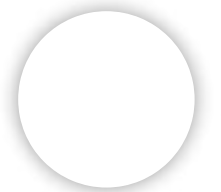
## Photographs

[Sergio Pirrone](#)

## Manufacturers

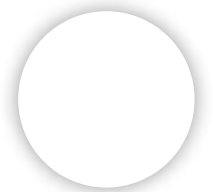
Perenz, Through Hamac.Fr

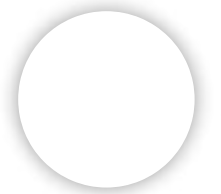
More Specs  
▼



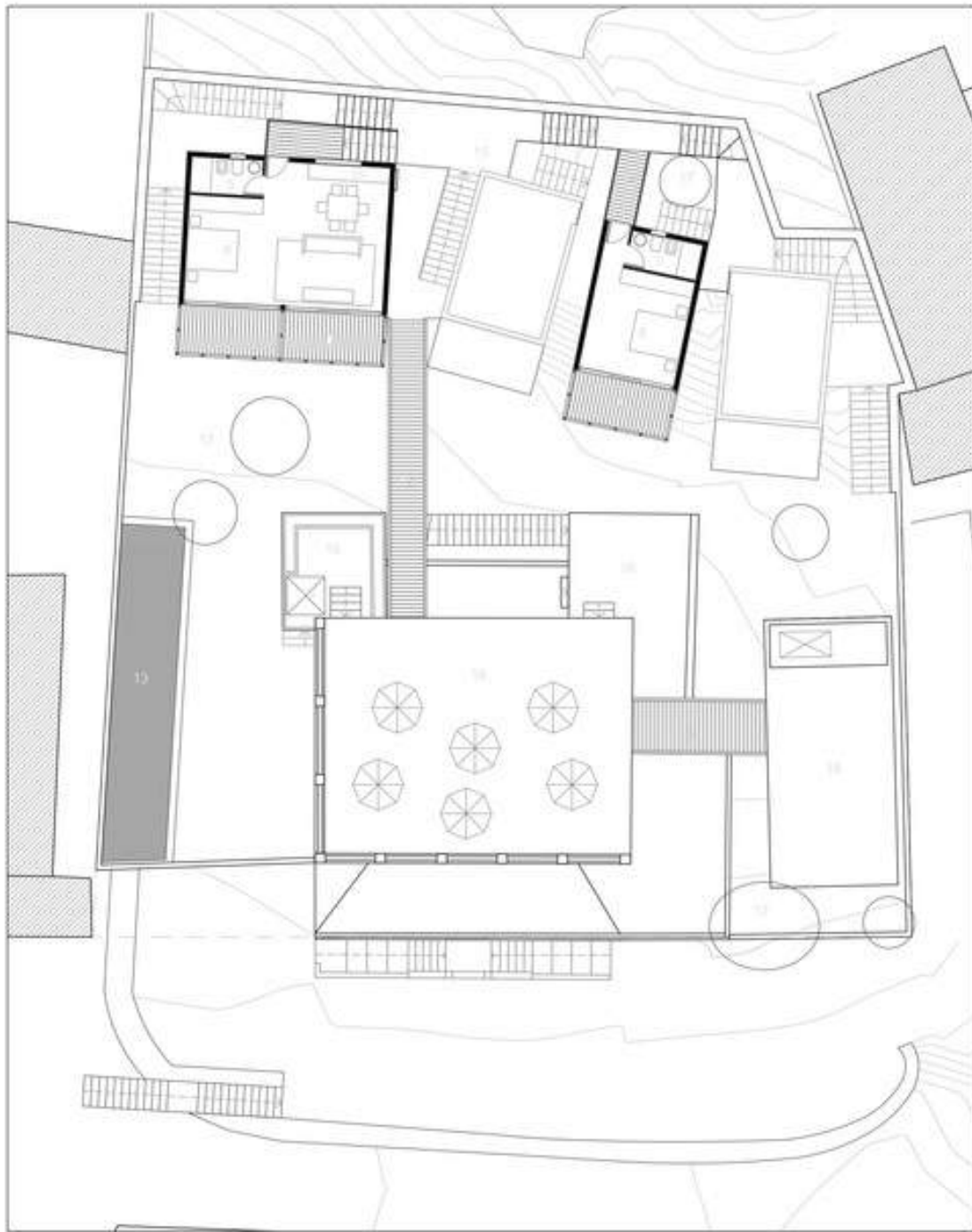


*Text description provided by the architects.* In the middle of the Atlantic ocean, in the island of Sao Vicente, in a dry windy island where only rain in August. A France trekking guide decides to build his own hotel for the incoming tourists that want to go trekking in the nearest mountain island of Santo Antao.









PLANTA NIVEL 4 - GERAL  
escala: 1 - 200

Legenda: 1. cozinha, 2. S, 3. S, 4. quarto, 10. cozinha, 11. piscina, 14. circulação vertical,  
15. passagens, 16. terraço, 17. jardim, 18. estêreo, 19. depósito água  
--- limite terreno



The guide bought an old colonial house on the edge of the  
historical center, and ask the architects that the old house has



Their tourists came to the island for 2-3 days passing by his hotel before taking the ferry for the other island of Santo Antao. The hotel usually for his client is the first African place where they stay. RamosCastellano Arquitectos used the same implantation philosophy of the other surrounding building, adapting the separated units to the morphology of the terrain.





Separating the buildings melting them in the built environment, creating with the mountain local's stones the path to the rooms, preparing the clients for the next destination, Santo Antao. Each block is facing a different view from the city to the bay, the verandah is studied with the solar path, trying to block the direct solar irradiation during the day, and giving a protected co the guest for enjoying the views.





The wind usually coming from the Sahara desert in N-E direction is mitigated by the breakfast-bar building. All the rooms opening



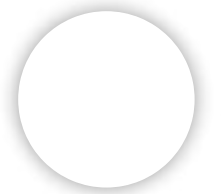
climatization systems. Every solution is simplified adapting to the island lack of material and resources, simple and essential for satisfying basic needings, not for ephemeral fashion. Almost everything is handmade, employing people from the neighborhood, from the floor finishing to the furniture, trying to distribute the economy of the building construction in the social environment.

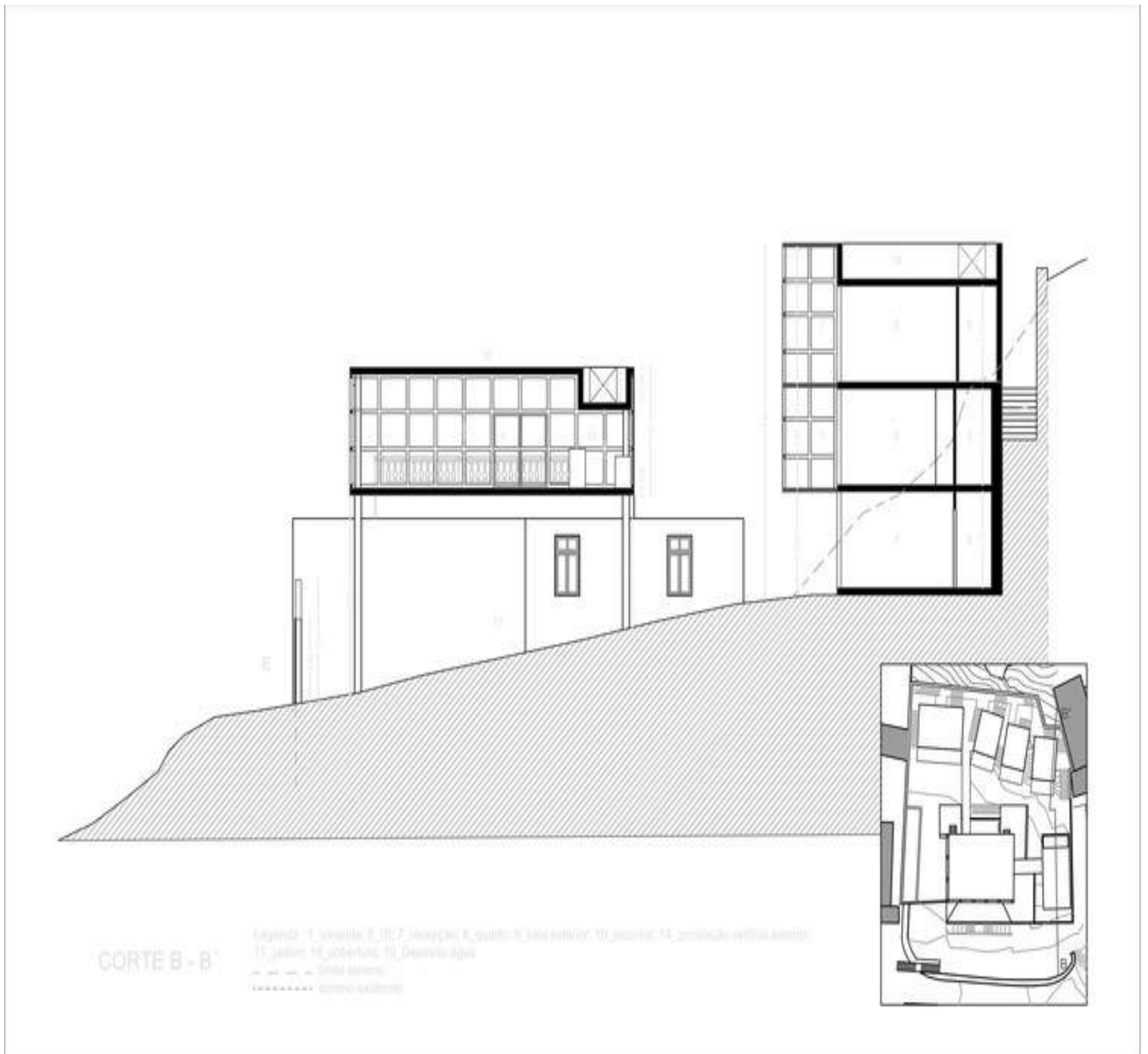




The external materials remain raw, wood for the verandah, lime puddy for the white buildings, for contrast the aggressive elements, sun, wind, sea spray. Recycled material, photovoltaic panels in the roofs, water recycling systems for the irrigation, emphasize the ecological side of the project, the blocks of the walls are made with the rocks of the terrain. The gate is made of recycled metal from the petroleum barrels, that are used locally





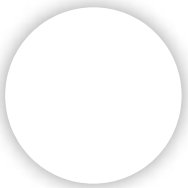


The furniture is designed by the Architects and the illumination systems too, using locally handcrafted, and recycled wood from electric cable coils. The old green colonial house host the owner's tourist agency, and in the other surrounding buildings 12 hotel rooms plus a suite, and a suspended on pilotis breakfast b  
roof of the old colonial house has a central role, where gues





and the hotel rooms are made by a bridge that links them, like in an adventures movie.







© Sergio Pirro...



© Sergio Pirro...



© Sergio Pirro...



© Sergio Pirro...



© Sergio Pirro...



© Sergio Pirro...



© Sergio Pirro...



© Sergio Pirro...



© Sergio Pirro...



© Sergio Pirro...



© Sergio Pirro...



© Sergio Pirro...



© Sergio Pirro...



© Sergio Pirro...



© Sergio Pirro...



© Sergio Pirro...



© Sergio Pirro...



© Sergio Pirro...



© Sergio Pirro...



© Sergio Pirro...



© Sergio Pirro...



© Sergio Pirro...



© Sergio Pirro...



© Sergio Pirro...



© Sergio Pirro...



© Sergio Pirro...



© Sergio Pirro...



© Sergio Pirro...



© Sergio Pirro...



© Sergio Pirro...





© Sergio Pirro...



© Sergio Pirro...



© Sergio Pirro...



© Sergio Pirro...



© Sergio Pirro...



© Sergio Pirro...



© Sergio Pirro...



© Sergio Pirro...



© Sergio Pirro...



© Sergio Pirro...



© Sergio Pirro...



© Sergio Pirro...



© Sergio Pirro...



© Sergio Pirro...



© Sergio Pirro...

© Sergio Pirro...

© Sergio Pirro...

© Sergio Pirro...

© Sergio Pirro...

Third Floor Pl...

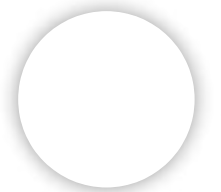
Third Floor Pl...

Fourth Level P...

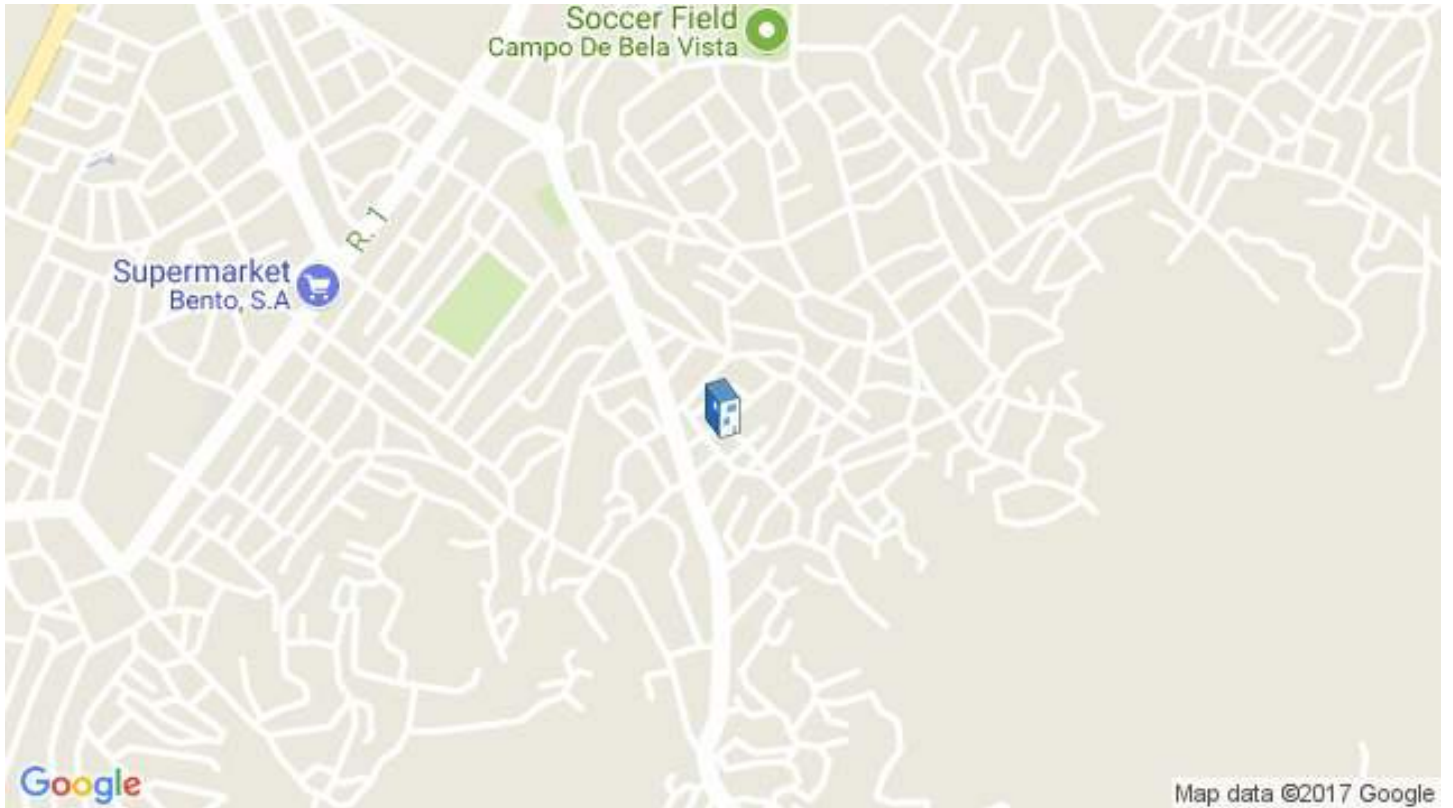
Fourth Level P...

Front Elevation

Elevation A1

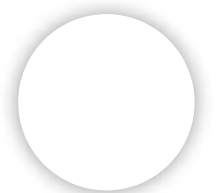


Floor Plan - B... West Elevation... Section A - Bui... Section B - Bu...



Location to be used only as a reference. It could indicate city/country but not exact address.

[Share in Whatsapp](#)



## Products:

Wood

Steel

Concrete

## See more:

Projects

Built Projects

Selected Projects

Hospitality Architecture

Hotels

Mindelo

Cape Verde

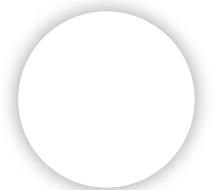
---

Cite: "Terra Lodge Hotel / Ramos Castellano Arquitectos" 15 Nov 2017.  
ArchDaily. Accessed 15 Apr 2018. <<https://www.archdaily.com/883721/terra-lodge-hotel-ramoscastellano-arquitectos/>> ISSN 0719-8884

## BROWSE THE CATALOG

**Claro<sup>®</sup> Acoustical Panels**

Decoustics



---

Apavisa

**Quadrillo® Acoustical Wood Panel**

Decoustics

**Fori™ Acoustical Wood Panel**

Decoustics

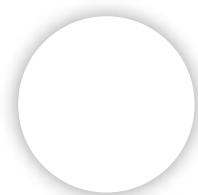
**Tiles - Iconic Beige**

Apavisa

**Slabs - Linetop**

Apavisa







شكرا لحسن الاصغاء

