

تصميم معماري III



م.علي سعد عبد الوهاب

جامعة المثنى

كلية الهندسة

قسم هندسة العارة

المحاضرة رقم 12 - الأسبوع الثاني عشر
افكار تصميمية لمشاريع مكاتب مركزية جامعية
مشروع تصميم المكتبة المركزية - جامعة المثنى





Vilnius University Library, Science Communication And Information Center / Paleko Arch Studija



LIBRARY · VILNIUS, LITHUANIA

 Architects: Paleko Arch Studija

 Area : 13800 m²

 Year : 2012

 Photographs : Raimondas Urbakavicius

 Manufacturers : Hunter Douglas Architectural (Europe), Ergolain, Hunter Douglas

 Share



Text description provided by the architects. The library is on the outskirts of Vilnius. A relatively quiet and leafy location of the existing university campus is about to change significantly. In upcoming years, a new agglomeration of education facilities will emerge here. The library is located near the pinewood, at the intersection of the main pedestrian path and a new access road. Neighborhood of the forest has inspired a spatial conception of the library - cozy inside spaces and their linkage with the nature.

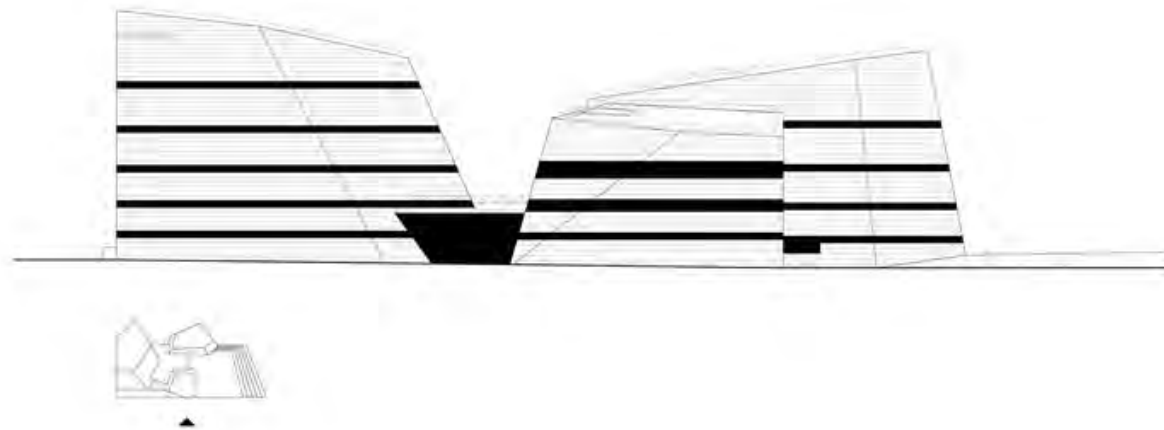


An intimate amphitheater-plaza is welcoming a visitor. A glazed entrance hall is a continuation of the plaza space. The same as the outside, it has concrete floor and terracotta facades. The ground floor, which functions as a central circulation space, also includes a conference hall, cafeteria, periodicals-reading room with an open-air terrace. As walking further, one is entering reading rooms located on several floors which are connected by an atrium, focusing the view to the forest. Two glazed facades face the wood and illuminate the trees at night. At the daytime, the trees are sunlit and become a visual part of the interior. The spaces are diverse and easily transformed. In the interior, white color dominates and exposes books as well as people.



We believe that the library should radiate an emotional charge because it is a place of non-material creativity and spirituality. Therefore, we have chosen the scenery of expressively and unpredictably varying silhouettes as the main architectural language. The volumes are clad with white terracotta elements. The facades are arranged so that all joints and gaps are horizontal and run parallel around the building despite

different angles of leaned surfaces. Rooms are naturally ventilated via window openings. Solid south-side partitions hide people and books from direct sun and overheating.



Recommended Products



Alusion
CMSK Xi'an Zhenguanfu Sales Centre - Alusion™ Stabilized
Aluminum Foam

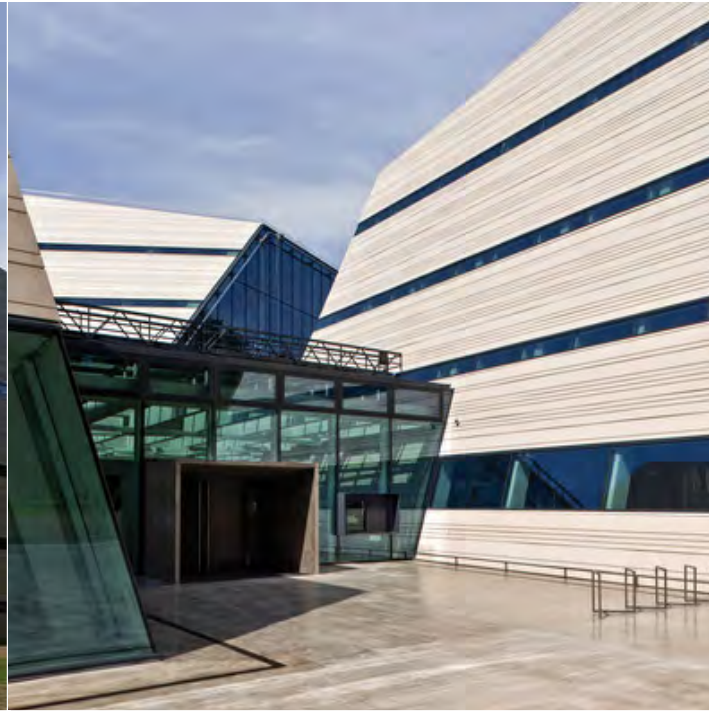
Studco
Wall Stop Ends - EzyCap



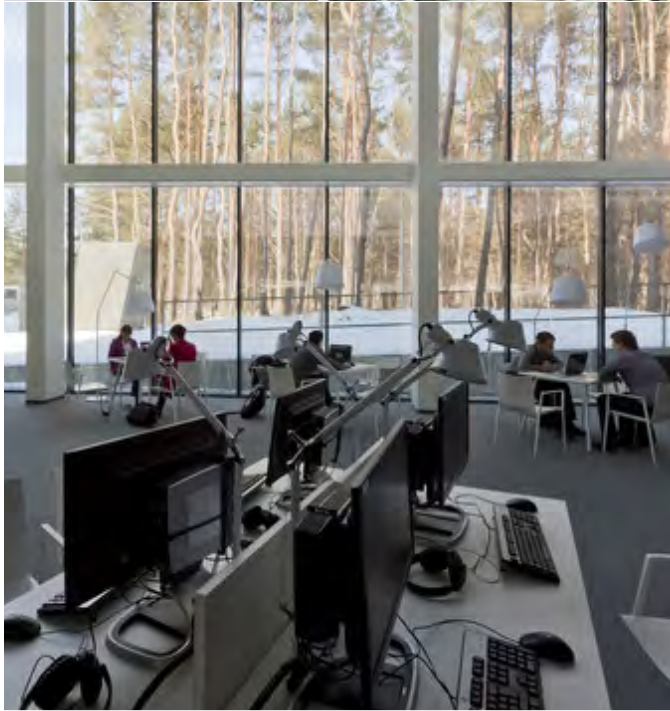
TECU®
Copper Surface - Classic Coated
Project gallery

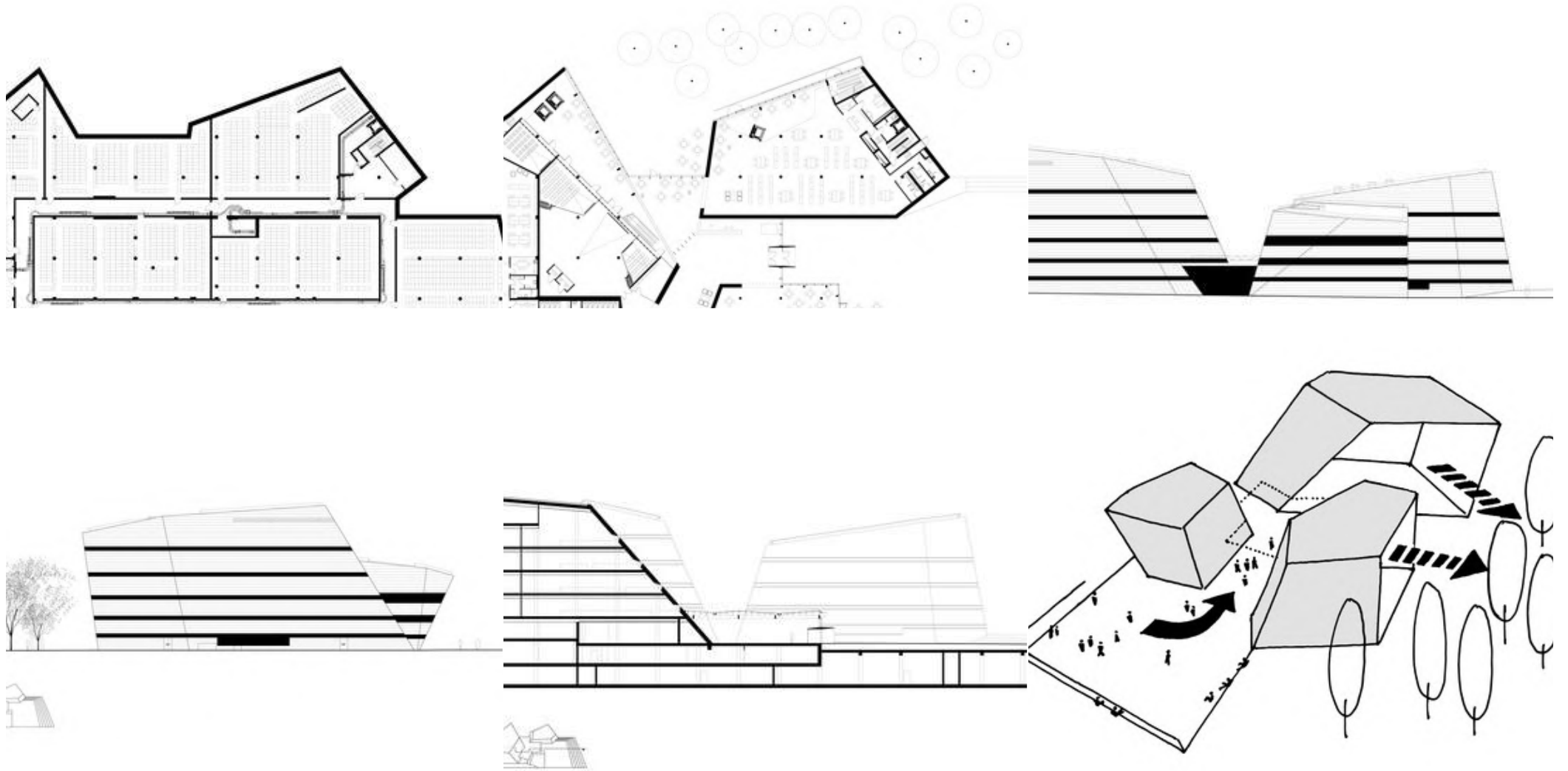


BoConcept
Coffee Table - Madrid



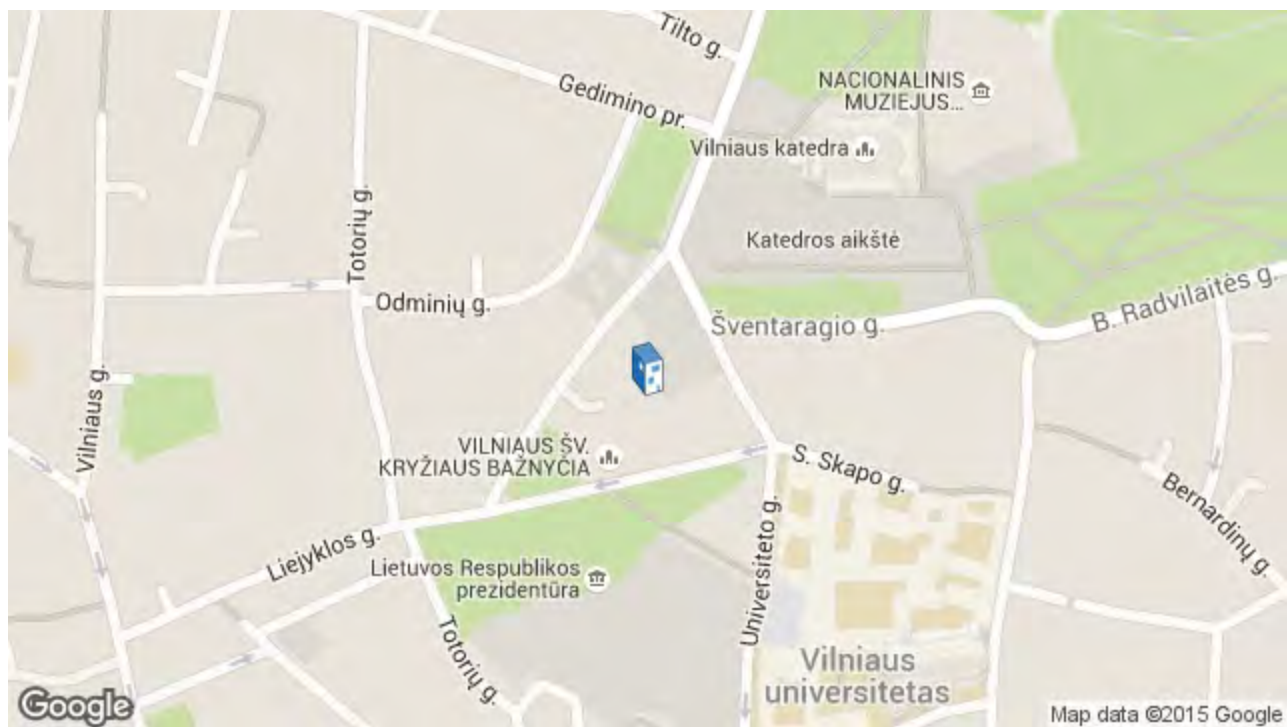






Project location

Address: Vilnius, Lithuania



Location to be used only as a reference. It could indicate city/country but not exact address.

Library of the Chinese University of Hong Kong's Shenzhen Campus / Wang Weijen Architecture



Curated by 韩双羽 - HAN Shuangyu

[Share](#)

LIBRARY, UNIVERSITY • SHENZHEN, CHINA

Architects: Wang Weijen Architecture

Area : 21801 m²

Year : 2017

Photographs : Chao Zhang, Wade Zimmerman

Lead Architect : Weijen Wang

Design Team : Jing Xie, Li Feng, Haoran Wang, Chang Su, Yi Tian, Shuqing Li

Local Architectural Team : CNADRI

City : Shenzhen

Country : China

Did you collaborate on this project?

LESS SPECS



Text description provided by the architects. The library design for the Chinese University of Hong Kong's Shenzhen Campus reconsiders the typical university library in China by breaking the six-story volume into two three-story C-shape volumes, stacked and re-oriented to connects with the adjacent landscape.



The library building extends the campus's green mall into its atrium, creating a direct visual connection between the campus and the hill behind the building.







The library's six-story atrium is surrounded by bookshelves and filled with reflected natural daylight. The atrium space extends vertically through the building and laterally connects different reading and study spaces.



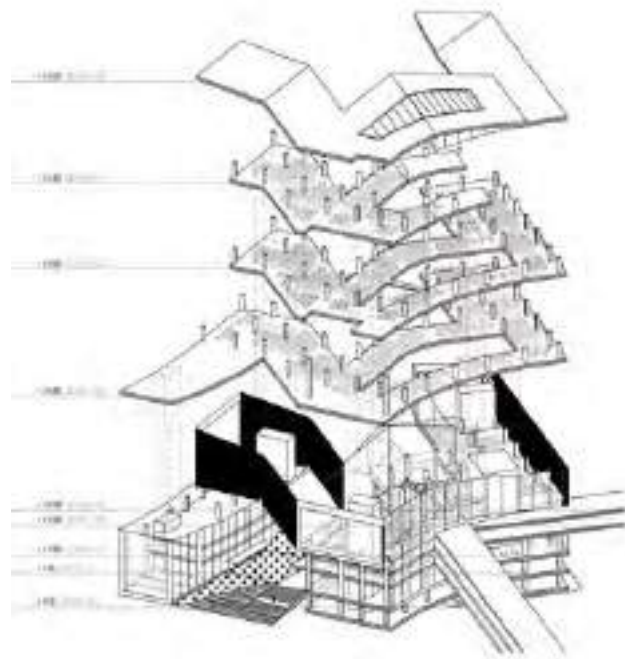
The horizontal volumes capture the surrounding landscape into the building, bringing a sense of naturalness into the densely packed shelving areas.



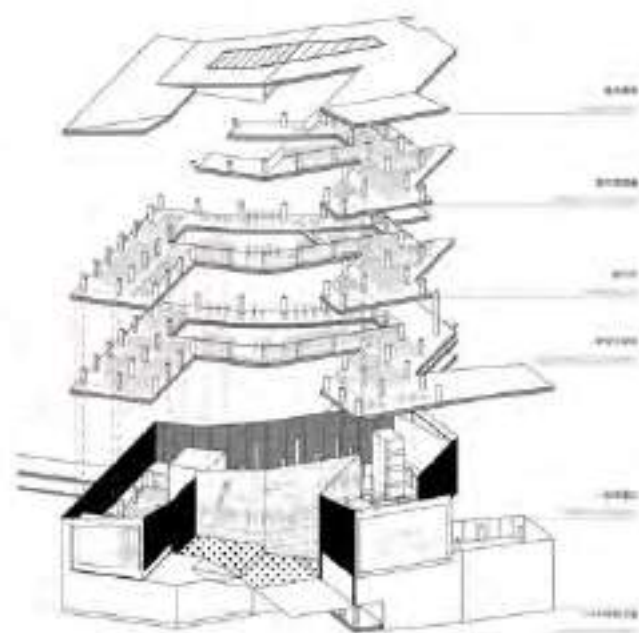


The skylights filter natural daylight into the center of the library, creating a warm and reader-friendly environment for reading and study.





WYNDEN



STABBE



From the exterior, the library building extends to connect with the adjacent student center, teaching complex and sunken garden, creating a learning hub for knowledge exchange among students.





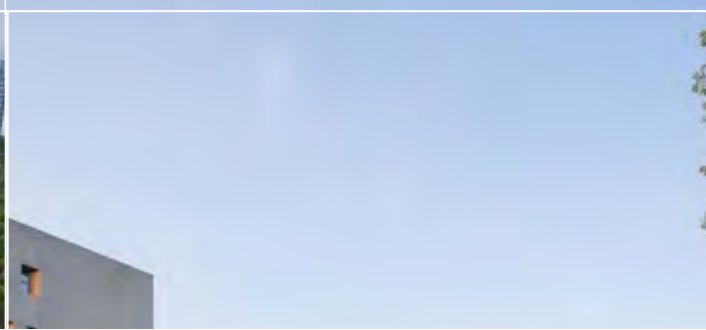
The use of material integrates local brick-laying techniques and with a glazing-aluminum curtainwall system. The exterior curvatures of the library building are designed in relation to the turning-and-meandering experience inside, creating a sense of discovery between the built and the natural, and between the vertical and the horizontal.



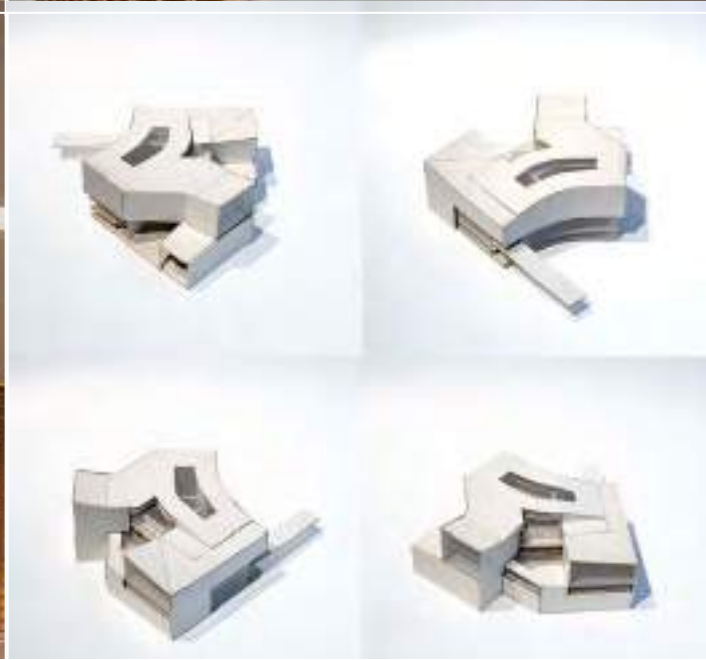
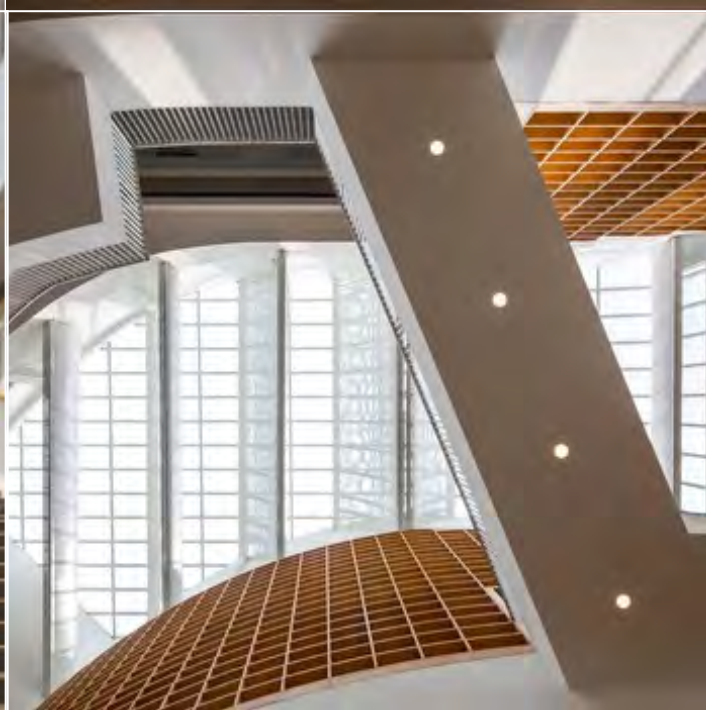


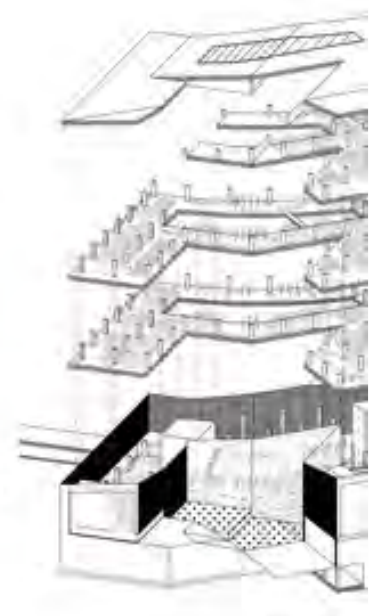
Project gallery





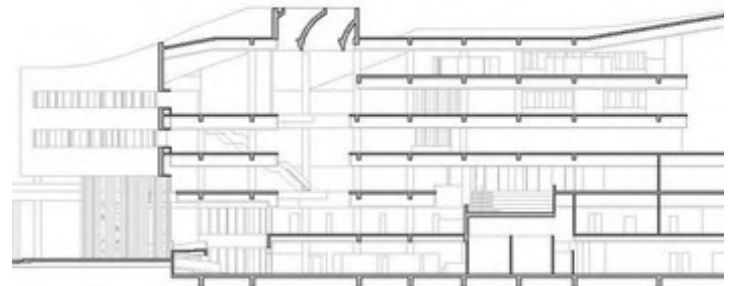
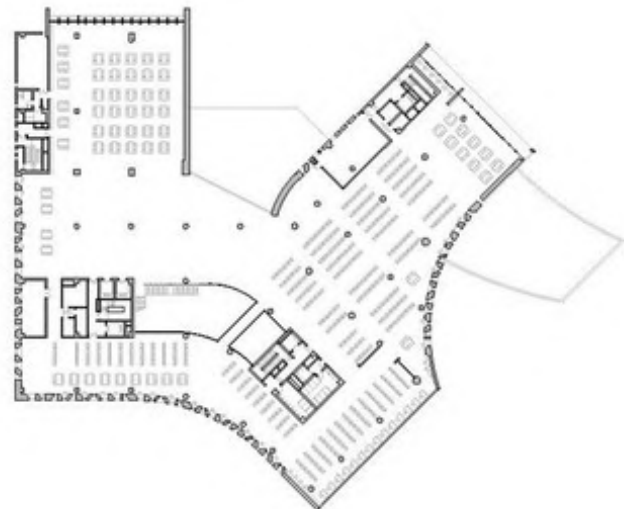
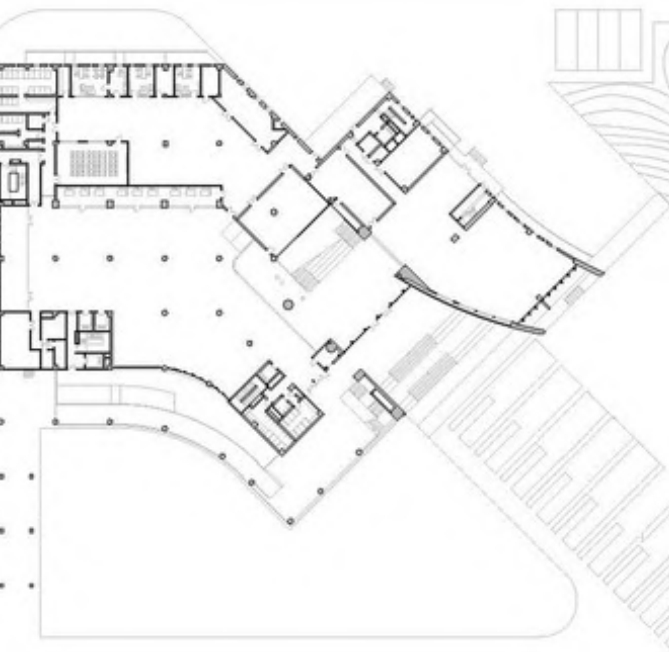


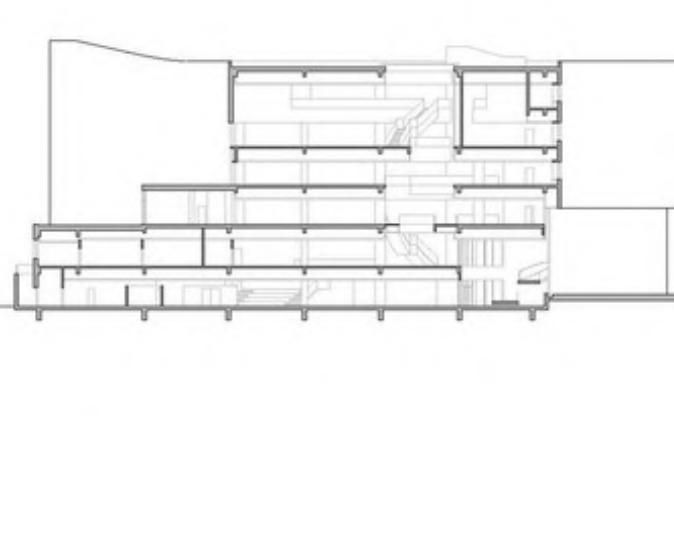




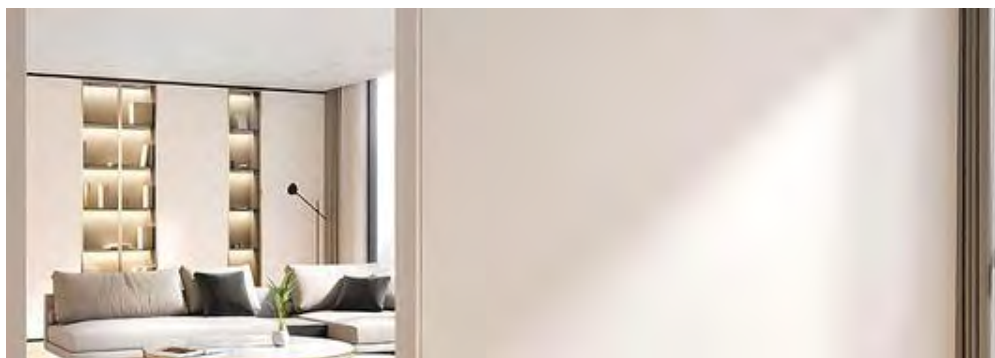
SECTION

SECTION





PARKLEX PRODEMA
Exterior Wood Cladding - NATURCLAD - W



Studco
Wall Stop Ends - EzyCap



Alusion
CMSK Xi'an Zhenguanfu Sales Centre - Alusion™ Stabilized Aluminum Foam



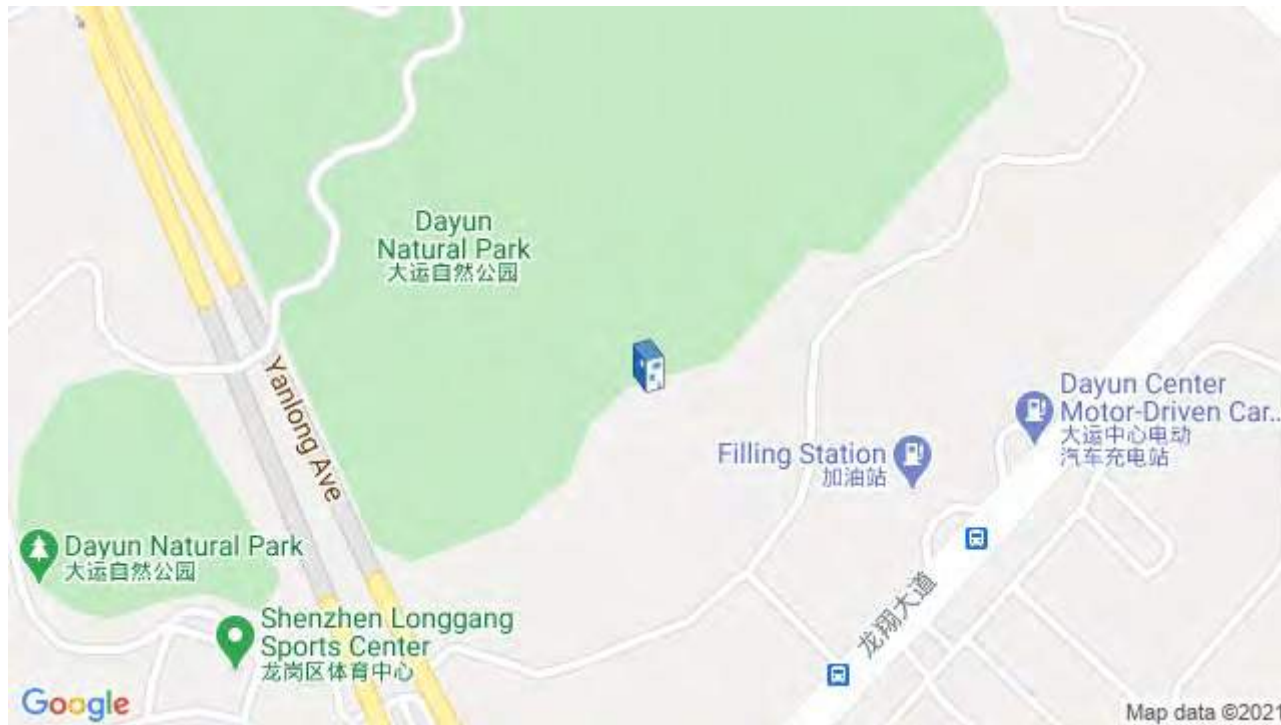
Hyline
Window System - HY30

Project location

Address: Shenzhen, China



Grespania
Porcelain Tiles - 20MM



Location to be used only as a reference. It could indicate city/country but not exact address.

University Of Versailles Science Library / Badia Berger Architectes



[Share](#)


LIBRARY • VERSAILLES, FRANCE

 Architects: Badia Berger Architectes

 Area : 4011 m²

 Year : 2012

 Photographs : David Boureau

 Manufacturers : Euramax

 Structural : Batiserf

Chief Architect : Trévor Ablott

Furniture : Anna Englesson

Economist : Jean-Claude CAMPION

Acoustics : Albini Taravella

City : Versailles

Country : France

Did you collaborate on this project?

LESS SPECS



The three separate volumes express the three parts of the program: the entry hall, the reading rooms and internal spaces. The shape is an expression of our perception of the program and our response to the requirements of a low energy building, fully acknowledging lighting and thermal comfort as well as highlighting the site's contrasts.



The indoor layout of the University Library has been designed to be as clear as possible: the entry hall at an intermediate level dispersing, by means of a monumental staircase, to the two large reading rooms. Special attention has been put into making the reception area easily accessible and giving them a convivial atmosphere. The play on height changes throughout the structure can be perceived from the entry hall, allowing one to enjoy simultaneous views of different floor levels and displaying the flexible organisation of the library.



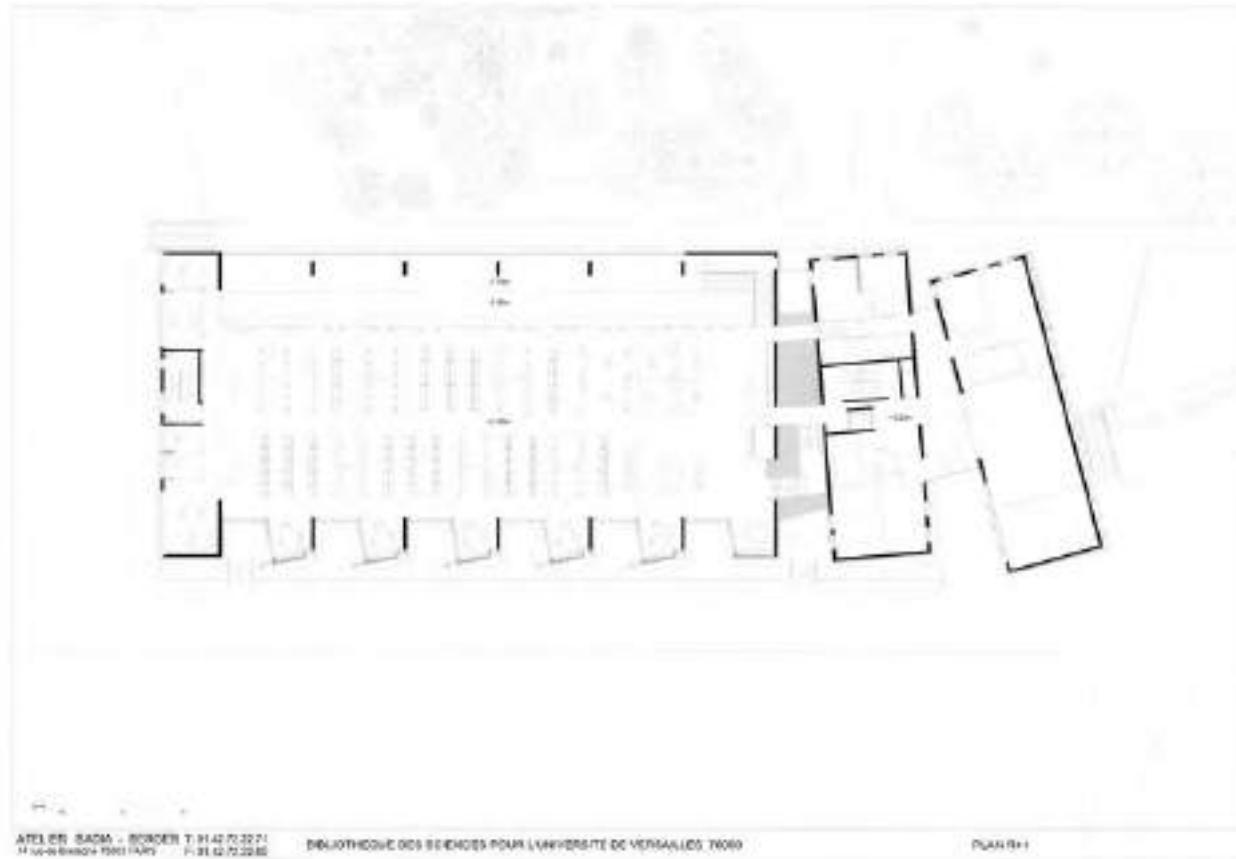
Clinging to the existing paths and slope, the building, like a ribbed-shell covering rough concrete, organises and structures the spaces and views. The inner skin amplifies the idea of an organic architecture, using the sheds to suspend the upper floor beam. The large trusses within the sheds suspend the upper reading room thus liberating the floor plan from any columns. The inside and outside thus communicate freely and the facades are a result of this relationship: they create an "indoor show" for visitors.



The east facade is completely open to the woodland and is naturally protected from the sun by a curtain of trees. Smooth and straight, it allows those who walk outside to discover alongside them the two reading floors as well as allowing people on the inside to benefit from the view of trees and plants that is offered to them.



In contrast, the west facade is structured by a series of closely-knit cells that become the form of the sheds on the roof, drawing in the light with a northern exposure, thus avoiding direct sunlight. The transparency of the façades and the openness of the floor plans allow slanted and distant views.



The north facade is pierced following the disposition of the study rooms. Lastly, the entrance on the south facade or Trombe Wall (named after the physicist who invented the principle) is formed by a darkly stained concrete wall in front of which is placed a glass screen. The air circulating in the gap between the two layers is heated by the sun to help heat the building. Overheating risks are reduced by the shadow brought by the brise-soleil during the summer.

Recommended Products



Flexbrick
Ceramic Textile System



Fastmount®
Large Panel Fastener - Stratlock Range



Axolight
Floor Lights - Float



Andreu World
Flex Corporate - Chair

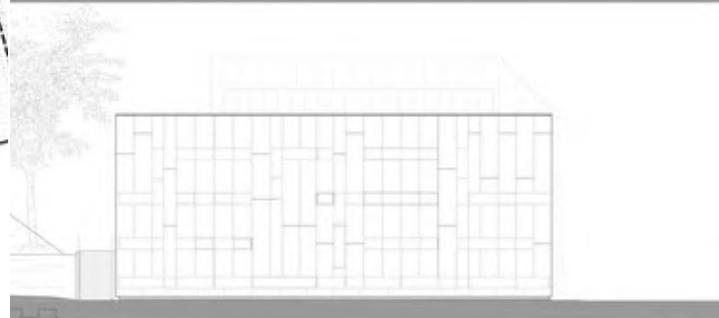
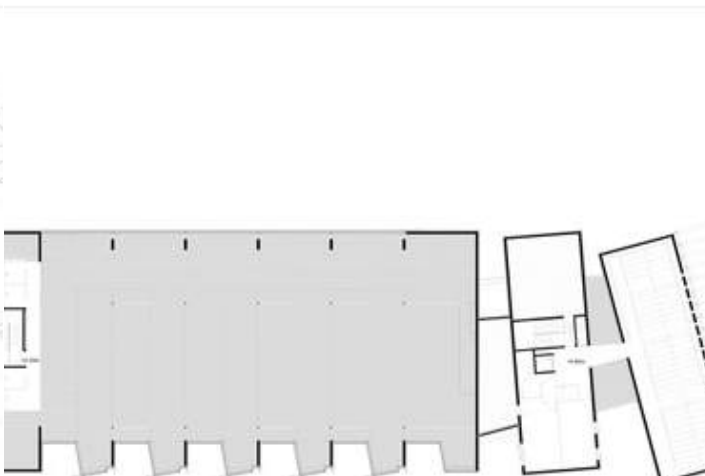
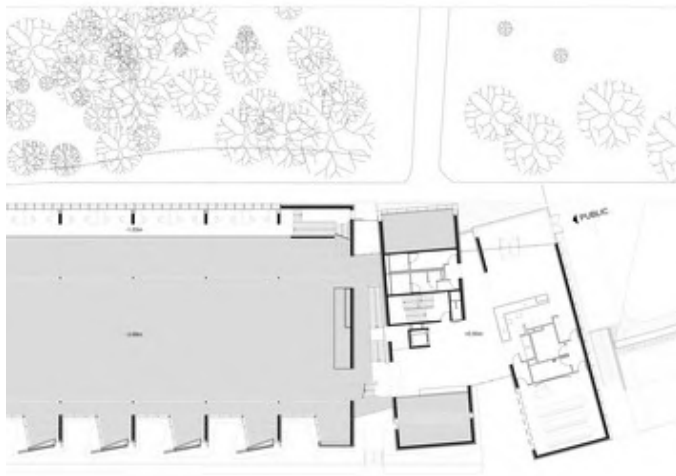
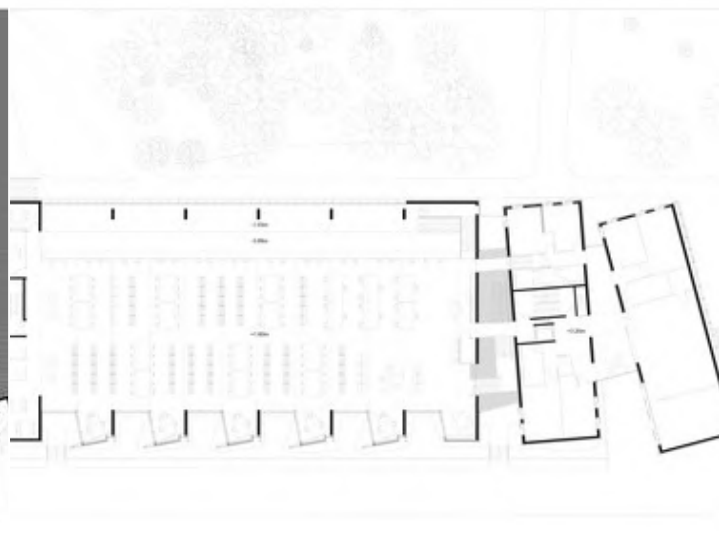
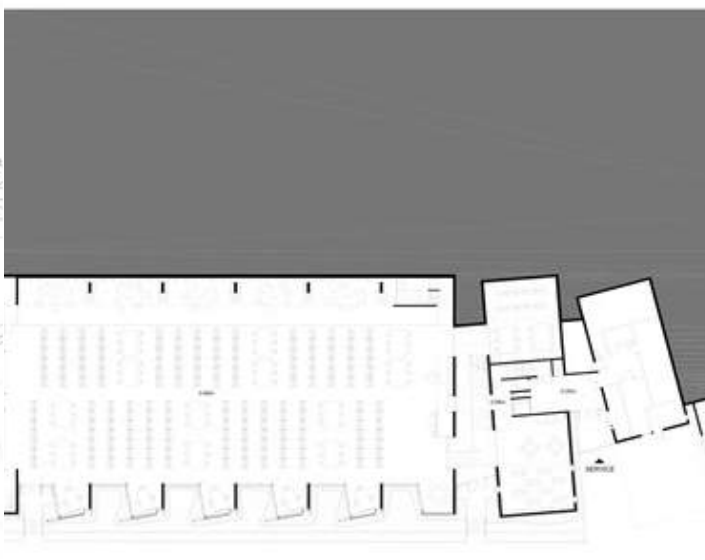
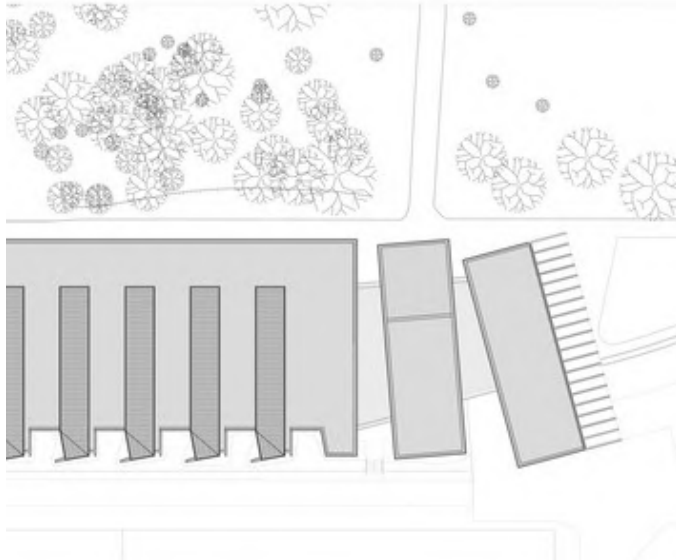
Project gallery

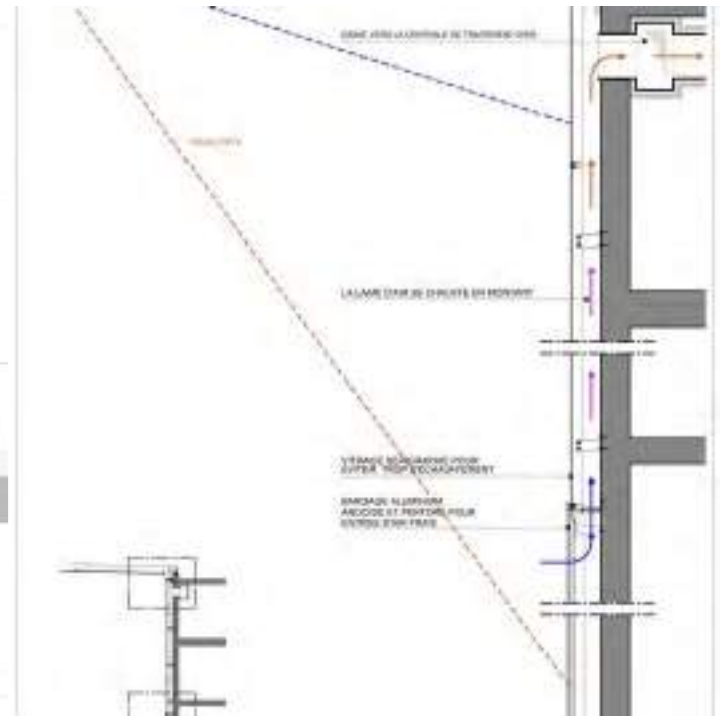
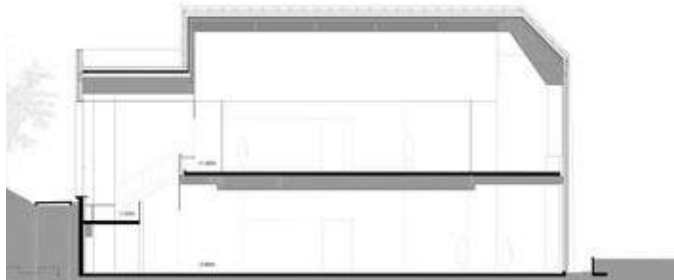
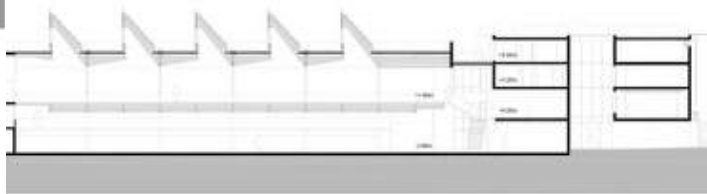
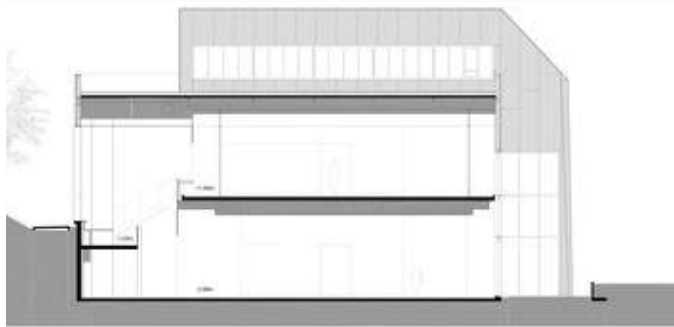
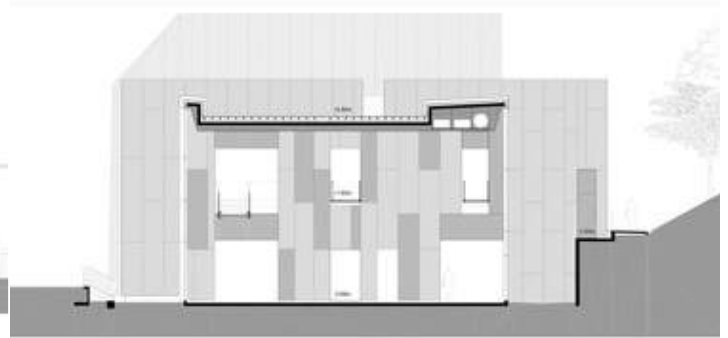
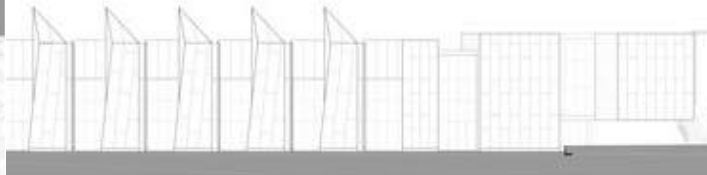
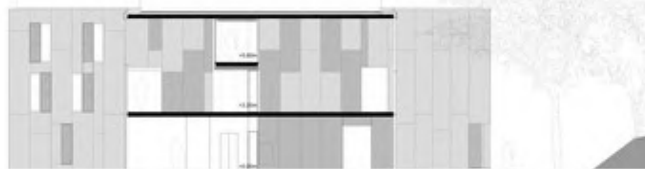












72.22.71
72.22.86 BIBLIOTHEQUE DES SCIENCES POUR L'UNIVERSITE DE VERSAILLES 78000

COUPES 2 + 2B

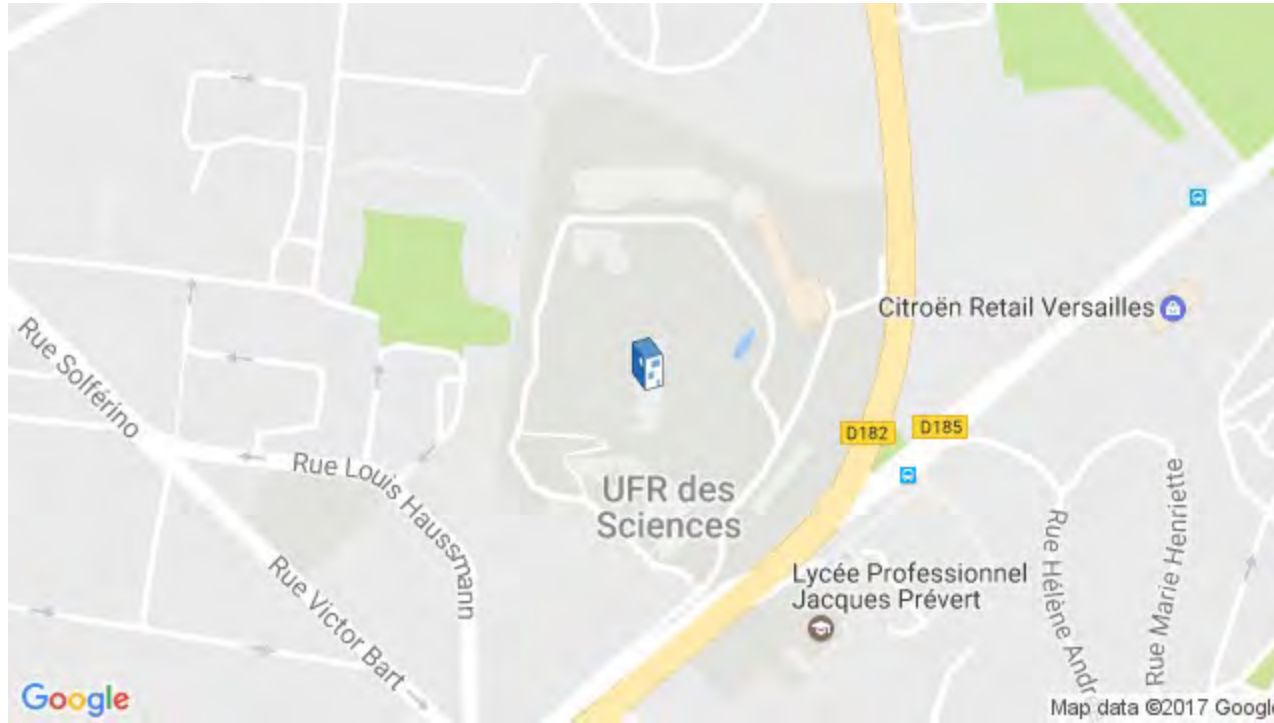
71.01.42 72.22.71
71.01.42 72.22.86

BIBLIOTHEQUE DES SCIENCES POUR L'UNIVERSITE DE VERSAILLES 78000

COUPE AA

Project location

Address: Université Versailles St Quentin, 45 Avenue des États Unis, 78000 Versailles, France



Location to be used only as a reference. It could indicate city/country but not exact address.

Architecture Library Chulalongkorn University / Department of ARCHITECTURE



Curated by **Paula Pintos**

[Share](#)

LIBRARY, UNIVERSITY · KHET PATHUM WAN, THAILAND


 Architects: Department of ARCHITECTURE

 Area : 1260 m²

 Year : 2019

 Photographs : W Workspace

Manufacturers : AutoDesk, Chaos

 Group, Actiu, Flowcrete, Knauf, Alucobond, Bolon, COTTO, Cromax, Curio, EDL, HAY, Heradesign, Lamitak, Robert McNeel & Associates, Warwick Fabrics, Wilson Art, niiq

 Lead Architects : Twitee Vajrabhaya, Chaiyapat Mirasena

Products used in this Project



Chaos

3D Rendering Software for Architecture — Chaos V-Ray

Design Team : Boonvadee Laoticharoen, Pattamapa Komonnirarnit

Clients : Faculty of Architecture, Chulalongkorn University

Benefactor & Project Director : Sermsin Samalapa

Lighting Designer : APLD co., Ltd.

Structural Engineer : Jet Structural

M&E Engineer : Next 2nd co., Ltd.

Environmental Graphic Designer : GA49 co., Ltd.

Ceiling Graphic Designer : be>our>friend studio

Construction Management : Prime Engineering Architectural Consultants co., Ltd.

Main Contractor : Thaweemongkol Construction (2000) co., Ltd.

Furniture Contractor : Lee Victor co., Ltd.

City : Khet Pathum Wan

Country : Thailand

Did you collaborate on this project?

LESS SPECS



Text description provided by the architects. In the near future, will we still read physical books or need physical space for libraries? How do people use libraries differently with the change of lifestyle and the presence of the internet which has changed the way we access information and knowledge?

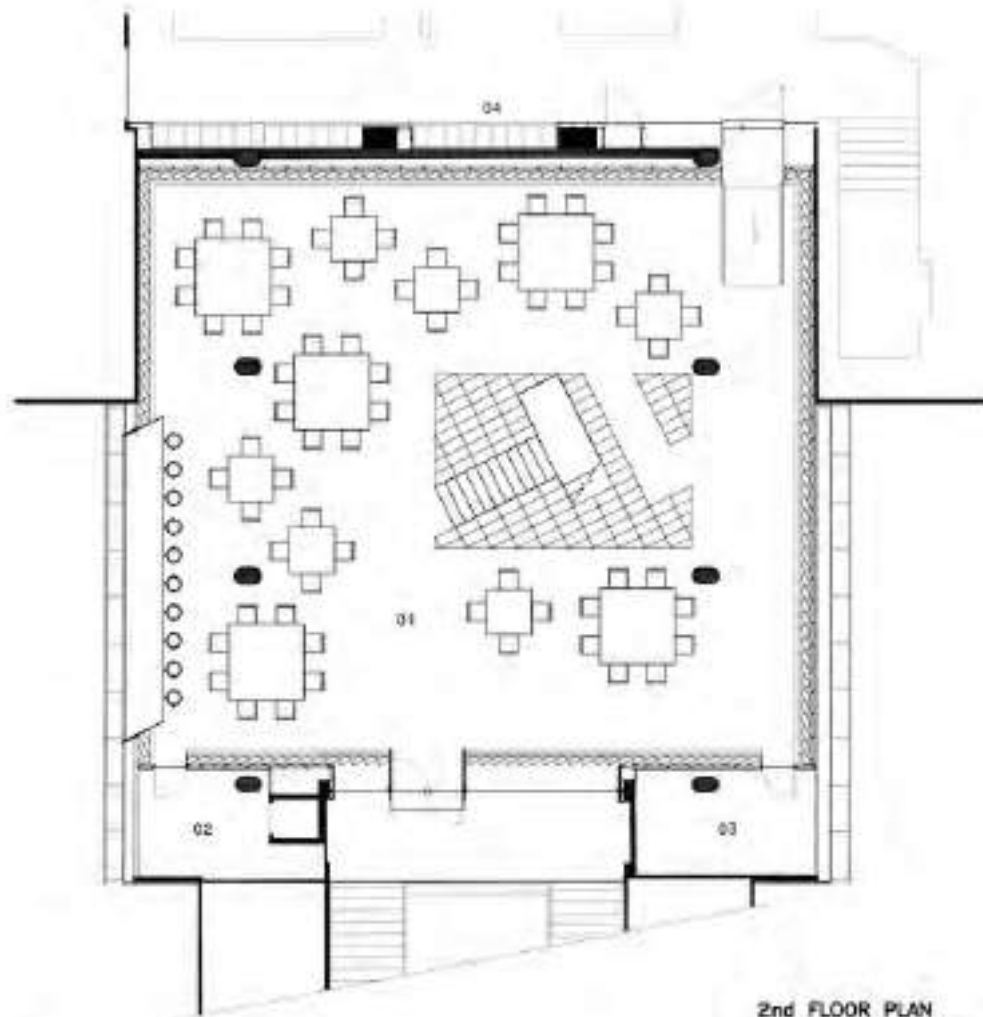


The project explores new possibilities of how a library could become.

Libraries today may continue to play an important role as learning space but it may not be the same anymore. There is an urge to rethink what a learning space is; and in particular what a learning space for an architecture school could become. To re-activate the library, the

project has expanded the meaning of the architecture library to be more than a place for reading books, but to become 'a creative incubator' for students of architecture.





2nd FLOOR PLAN

- 01 CO-WORKING / EXHIBITION
- 02 M&E
- 03 STORAGE
- 04 LOCKERS



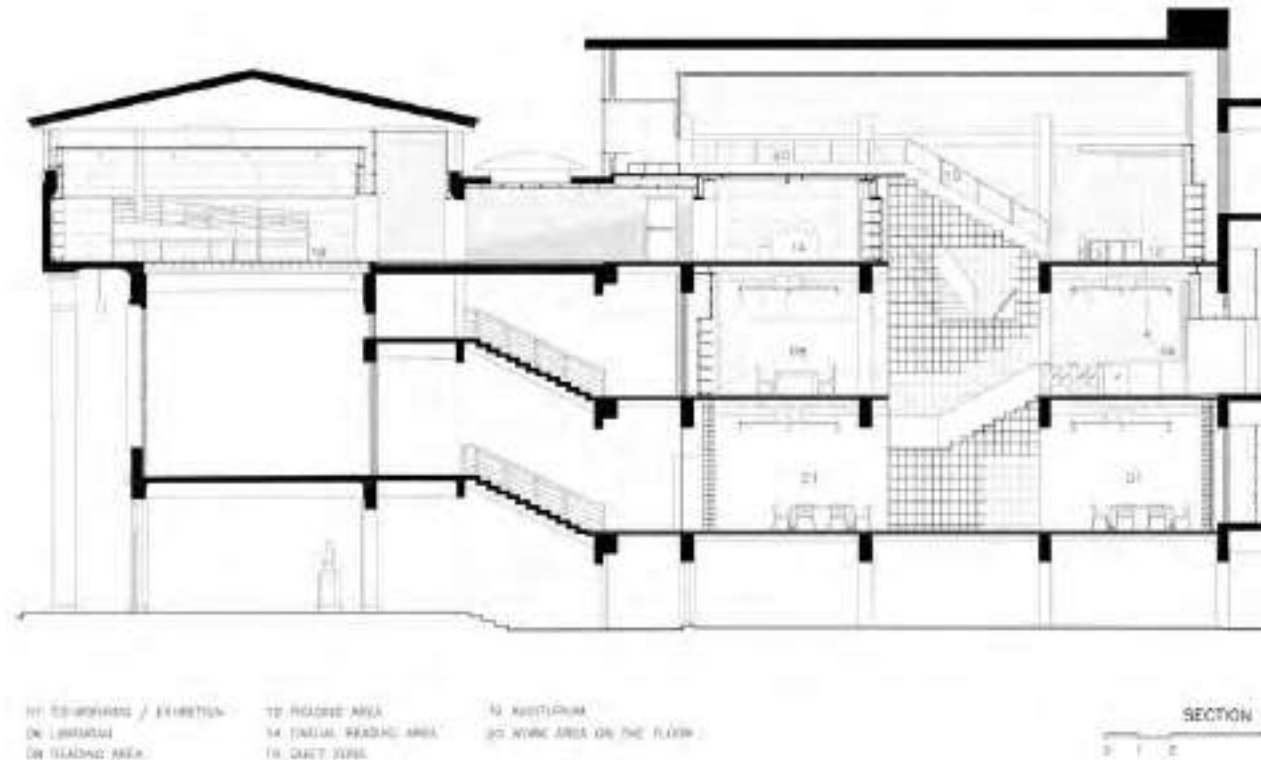


Various programs are integrated into the new library. They range from a co-working space, an exhibition space, a pin-up space to an occasional lecture space where the library becomes a place for the exchange of ideas, and it includes not only physical books as sources of knowledge and inspiration but also digital media, movies, exhibition, etc.



On its first level, a 3Ds grid system enveloping a co-working space provides an open-ended platform for students to create exhibitions or various events, to hang, to fasten, to insert, or to do anything with it. It becomes an experimental ground for architecture students to act on

the space. The ever changing exhibitions from various studios in the schools could inspire one another. The system is also available for pin-up spaces with magnetic pin boards and digital screen where anyone who walk pass can stop by to join the discussions.



Although today a great deal of information is online. Content in books still have a different nature of curation and depth. While digital data already surrounds us virtually, the physical space of the library attempts to surround us with physical books and magazines. Showcase spaces showing book covers facing out are maximized, rather than the usual compressed stacks we see only book spines, inviting people to pick them up to read them.



There still be a quiet zone for those who need to concentrate. Carrels are rearranged in a labyrinth configuration to minimize disturbance from the circulation around. The reflective ceiling reveals the plan of the luminous maze.

On the top floor, the pixelated steps are reading area that, with rearrangement of the cushions, can be turned into an auditorium for occasional lectures or movies as another source of inspiration.

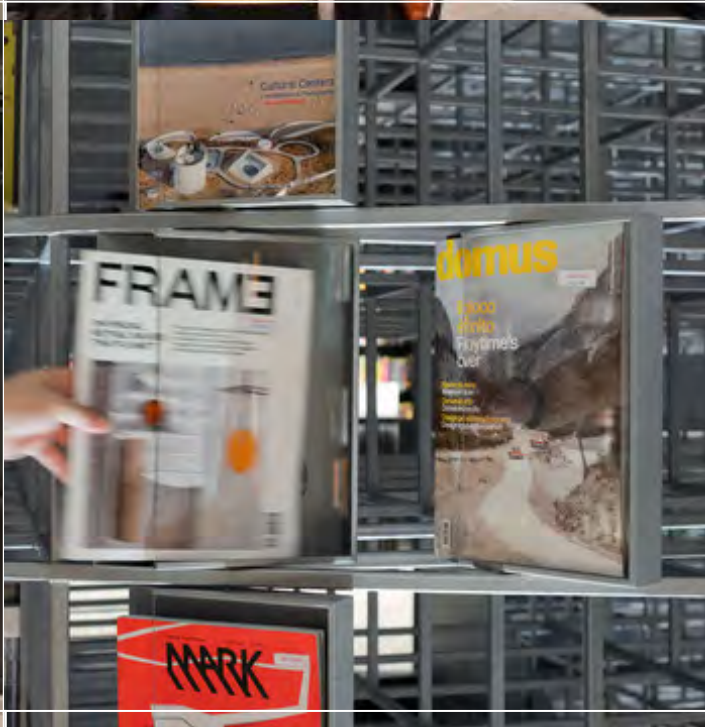
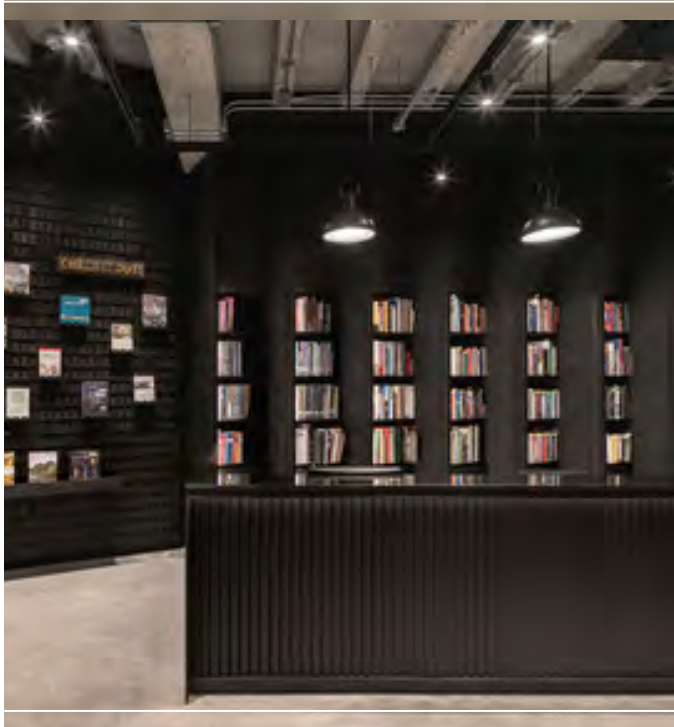


Different atmospheres and seating types allow people to choose according to their preference, from co-working space, tables looking to the outside, a quiet area, low table and sofa space for a relaxing setting, even to sitting on the floor. The students who work all night may even find a space to take a power nap on the mattress area on the mezzanine to refresh themselves before going to the next class.



Project gallery

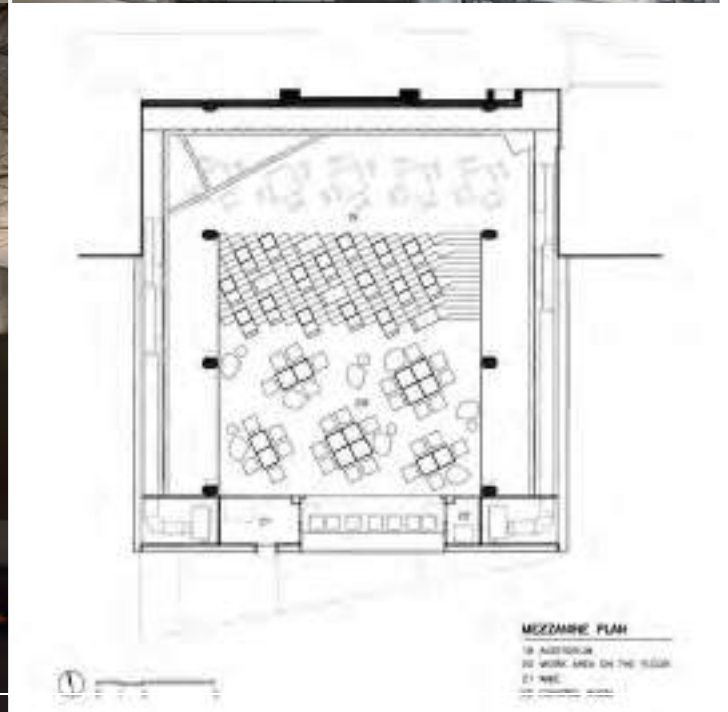
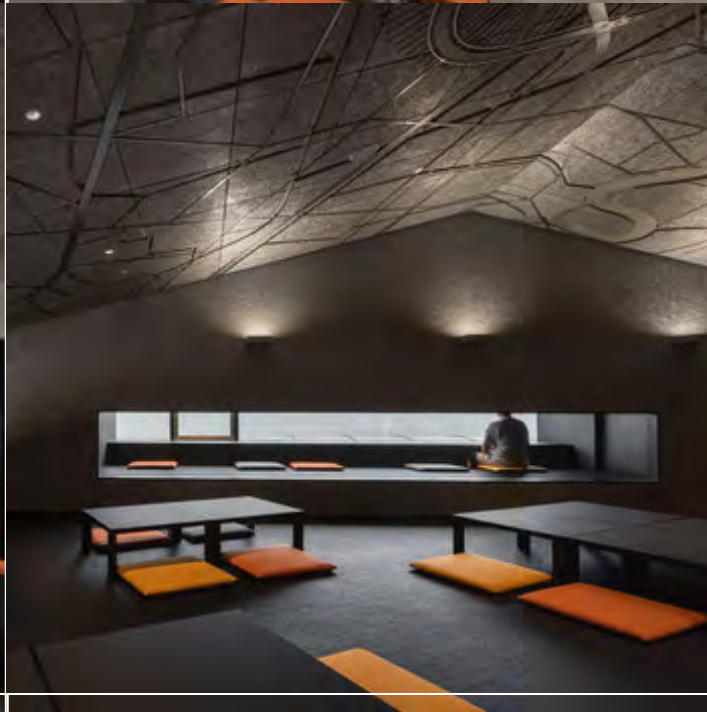


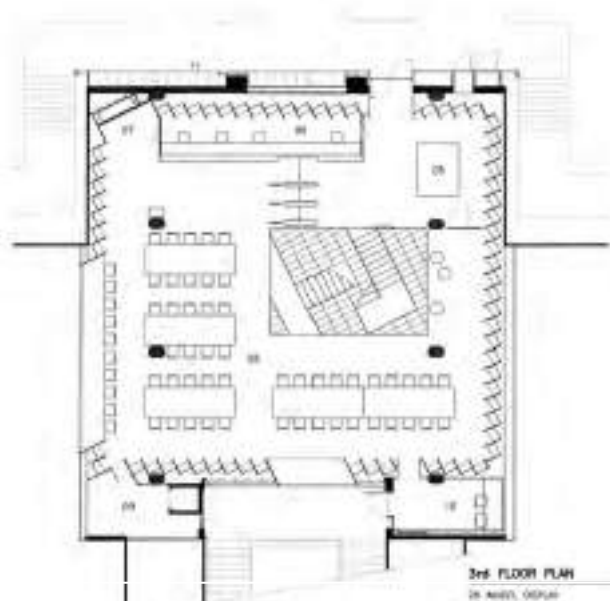
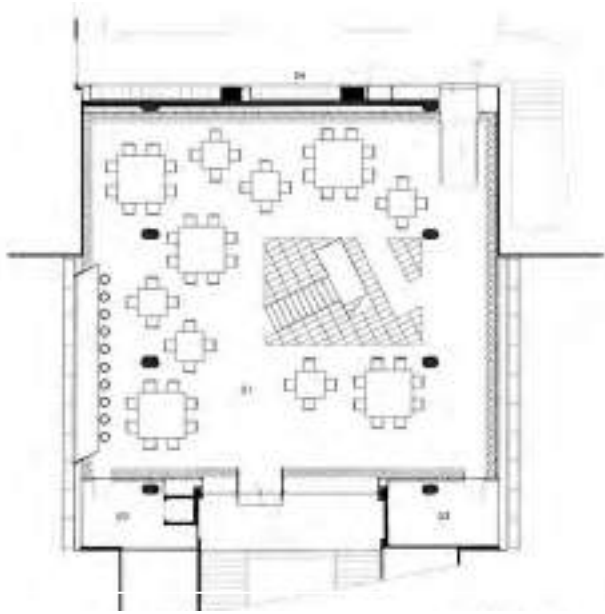




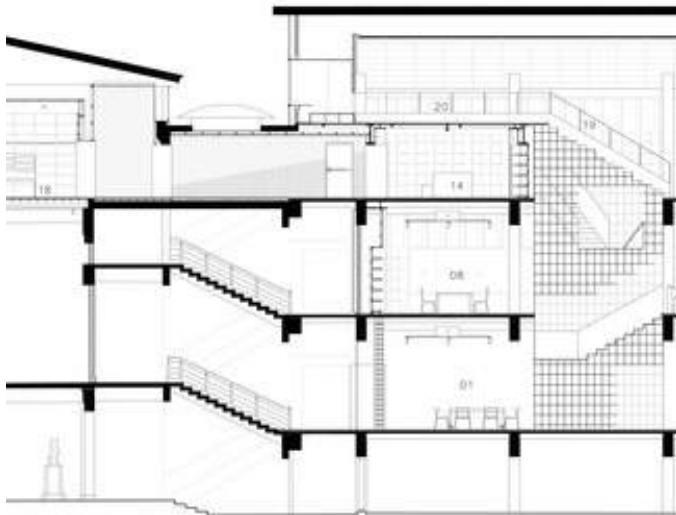
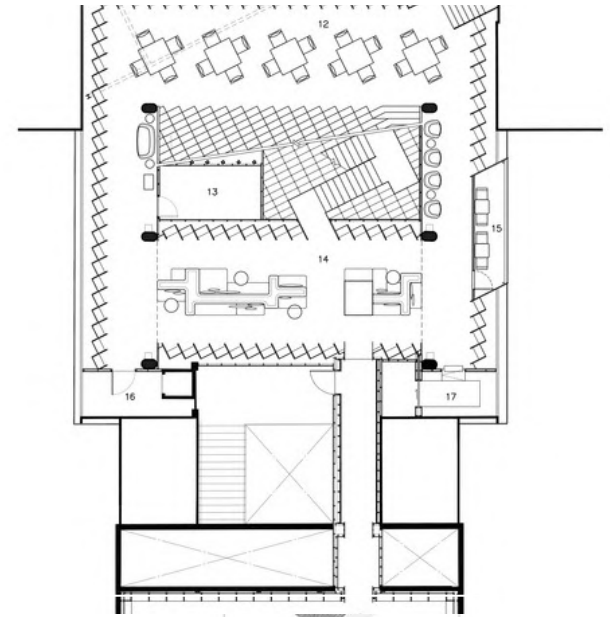




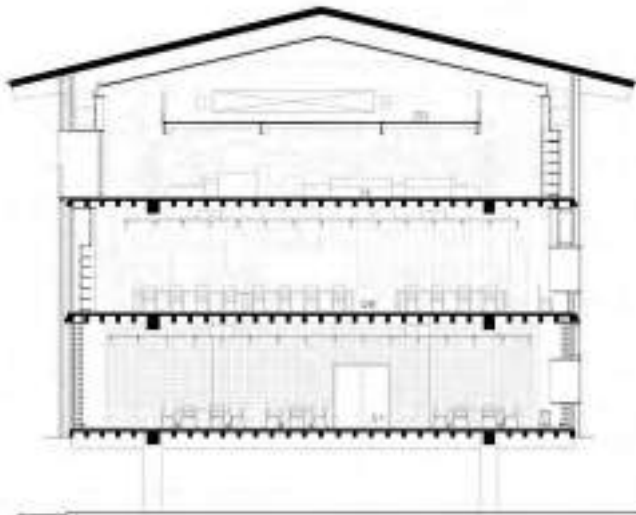




3rd FLOOR PLAN
20 AREA, 06 PLAN

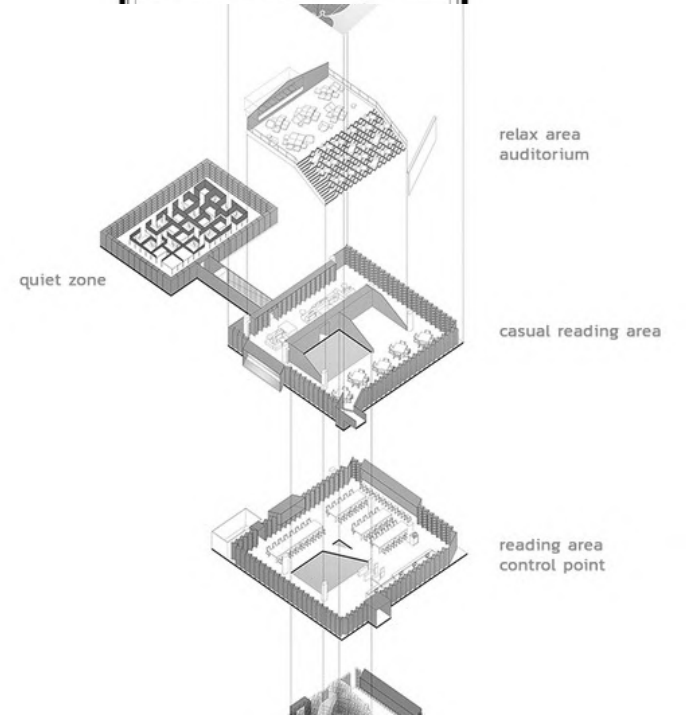


2 READING AREA
4 CASUAL READING AREA
8 QUIET ZONE
19 AUDITORIUM
20 WORK AREA ON THE FLOOR



01 EXHIBITION / ENTRANCE
06 READING AREA
14 CASUAL READING AREA
20 WORK AREA ON THE FLOOR

SECTION 2



Project location

Address: 254 Phayathai Rd, Wang Mai, Pathum Wan District, Bangkok 10330 Thailand



Location to be used only as a reference. It could indicate city/country but not exact address.

Carnegie Mellon University Sorrells Library Renovation / GBBN




Curated by **Martita Vial della Maggiora**


[Share](#)

LIBRARY, RENOVATION, EDUCATIONAL INTERIORS · PITTSBURGH, UNITED STATES

 Architects: GBBN

 Area : 1507 m²

 Year : 2017

 Photographs : Ed Massery

 Manufacturers : Buzzispace, Haworth, Covering Chile, Milliken, Plyboo, TechLighting

 Project Manager : GBBN

Architect In Charge : Anne Chen, Amanda Markovic

Structure : N/A

MEP : N/A

City : Pittsburgh

Country : United States

Did you collaborate on this project?

LESS SPECS



Text description provided by the architects. Three prefabricated bamboo elements are at the heart of this renovation. Designed by GBBN and fabricated locally by two Carnegie Mellon School of Architecture alums, these striking millwork pieces bring warmth to a concrete Brutalist building and help turn it into a place for active learning.



Near the entrance, “arbors” bring down the scale of the space and provide collaborative zones that feel sheltered within an active, social area. A “portal” in the middle separates the active space near the entry and circulation desk from quiet and focused work zones toward the back. The portal also offers students a range of alternative seating on and around its platform. A multi-media collaborative “den” at the back of the library lets larger groups work without disrupting others.





Additionally, prefabricated glass and metal modular work rooms were added to the space. They keep students visually connected to the rest of the library but provide acoustic privacy for group projects.



All four elements were fabricated off-site and installed in just two weeks during a campus break. To accommodate these changes, a large amount of little-used books were moved off-site while 12,000 of the most frequently requested titles remain.



Recommended Products



Air-Lux
Sliding Window - Curved



Flexbrick
Ceramic Textiles for Facades



Project gallery

Kalwall®

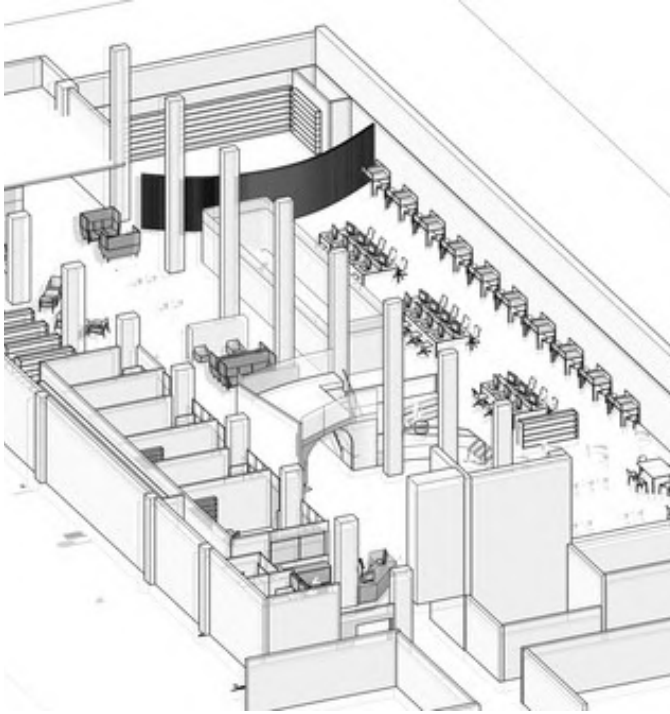
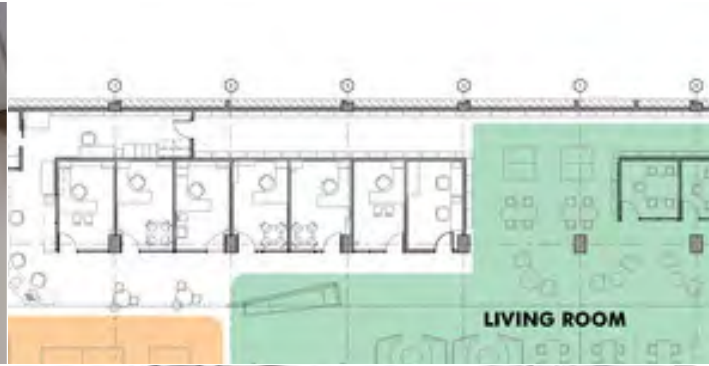


PARKLEX PRODEMA



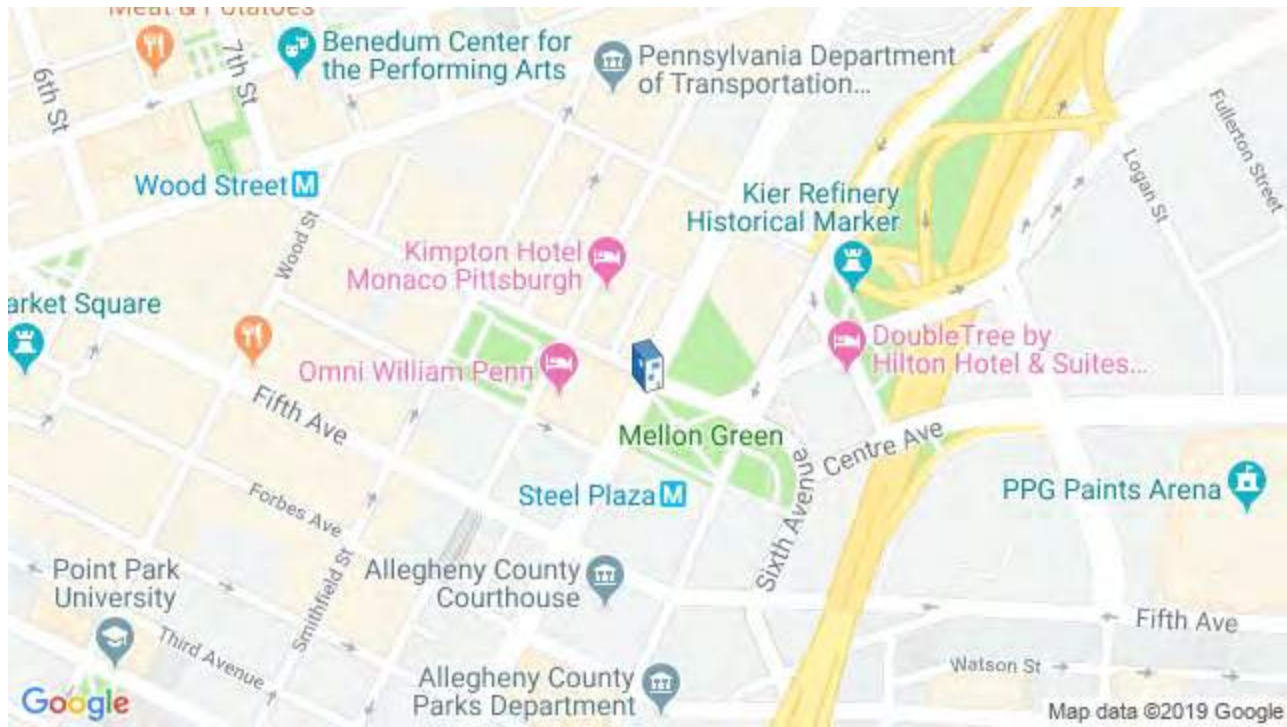






Project location

Address: Pittsburgh, PA, United States



Location to be used only as a reference. It could indicate city/country but not exact address.


Helsinki University Main Library / Anttinen Oiva Architects





[Share](#)

LIBRARY • HELSINKI, FINLAND

 Architects: Anttinen Oiva Architects

 Area : 31700 m²

 Year : 2012

 Photographs : Mika Huisman, Tuomas Uusheimo

 Manufacturers : Vivero

 Acoustical Consultants : Helimäki Akustikot Oy

Contractors : SRV

Design Team Leader : Vesa Oiva

Project Management : Indepro Oy

Cost Management : Indepro Oy

Site Management : Indepro Oy

Building Services Consultant : Pöyry Building Services Oy

Construction Engineering Consultant : Finnmap Consulting Oy

Electrical Engineering Consultant : Pöyry Building Services Oy

Client : University of Helsinki

City : Helsinki

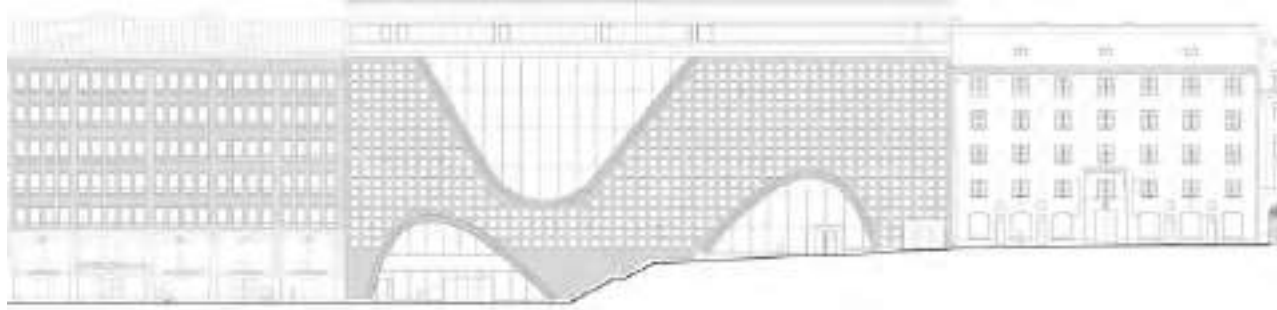
Country : Finland

Did you collaborate on this project?

LESS SPECS



Text description provided by the architects. Helsinki University Main Library, the largest academic library in Finland is located in a historically important city block in the very heart of the city centre. The library was designed to offer a wide range of services flexibly to a large number of customers. This imposing building in the centre of Helsinki provides a gateway to the new information age.

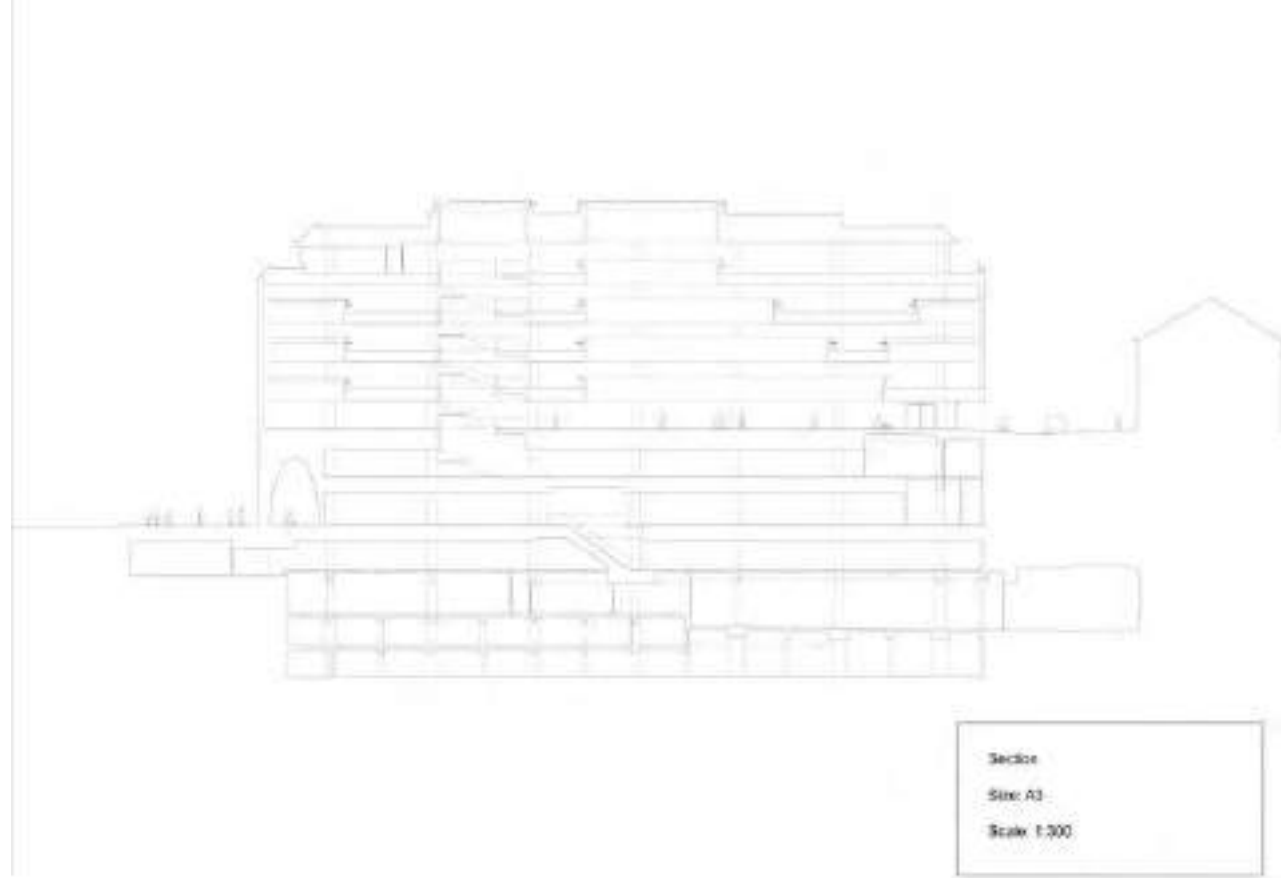


Facade West
Size: A3
Scale: 1:300

The new library building complements the urban block by adding a curved brick facade, integrated within the street line formed by the adjacent buildings.



The architectural starting point - the cityscape considered - was a vision of a unique public building that will suit its surroundings in terms of its materials, design and height. The dense fenestration grid, which blurs the standard floor division, together with the large arched openings give the library a distinct external appearance. By varying the size of the arched openings the building is fitted as an integrative solution within a situation of three different types of street space.



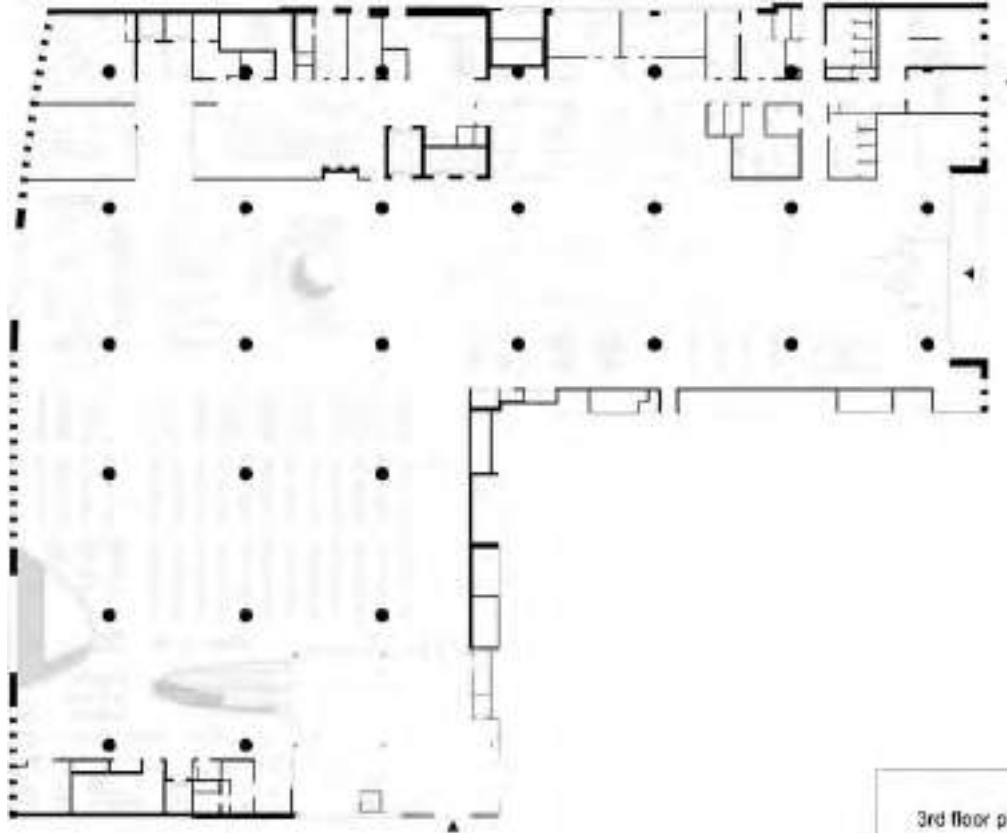
The design of the building's interior is based on an aligned series of openings in the ceilings. Three distinct apertures and the main staircase form a series of spaces serving as a basis for the ambiance of the interior, the functional zones as well as the architecture of the façade. The architectural concept of the façade directly reflects the functional solutions of the interior.




The facilities have been divided into functional zones with the aim of facilitating the use of the library and its services. This will, in turn, support and facilitate the learning process. The apertures are encircled by walkways and the information zone, which is, in turn, surrounded by the collections zone.



A work zone with sound-proof working facilities provides areas for both quiet reading and noisy group work. The library also has quiet reading rooms. Field-specific areas are designated for the collections in each of the floors.



3rd floor plan
Size: A3
Scale: 1:300



Staff facilities and offices are on the collection floors above ground level. The customer service centre with its back offices is located on the entrance level. Acquisitions and cataloguing, and administration and network services can be found on the top floor, while the logistics centre is below ground with the maintenance facilities. New library materials will first be transported from the logistics centre to the top floor for processing and then delivered to their destinations on the appropriate floors.



The objective of the University of Helsinki was to build a representative, interesting and comfortable facilities for students, researchers and staff to be appreciated.



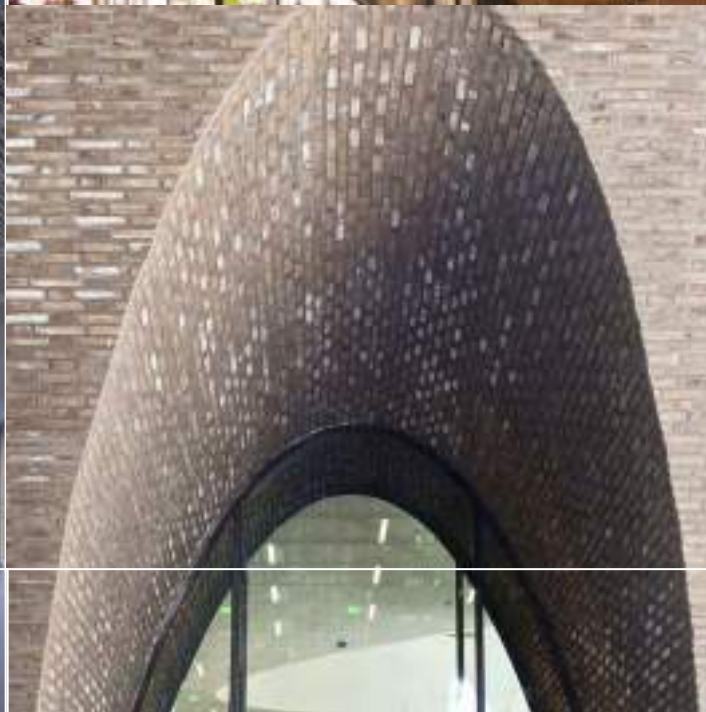
The building has a reinforced concrete frame which is built on top of the old, existing basement levels. Due to increasing load the old concrete structures were heavily reinforced.

The facades are concrete walls which are covered with onsite laid brickwork.

The large main window openings are suspended steel structures.

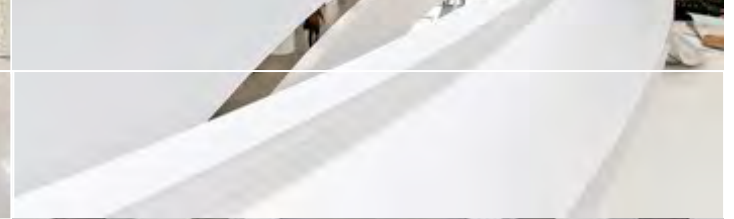


Project gallery











3rd floor plan
Size: A3
Scale: 1:300

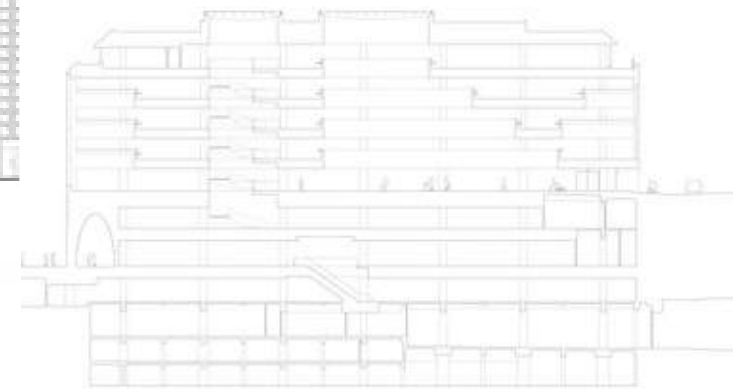
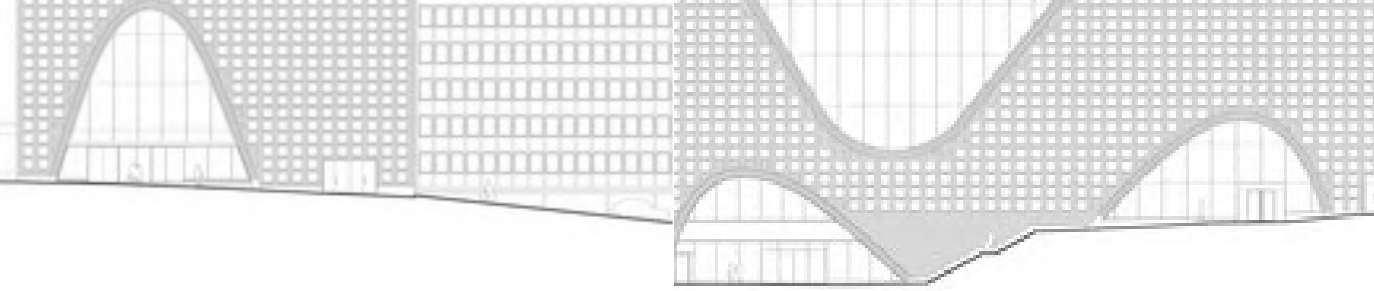


5th floor plan
Size: A3
Scale: 1:300



7th floor plan
Size: A3
Scale: 1:300





Fa
Slz
Sc

Section
Size A3
Scale 1:300



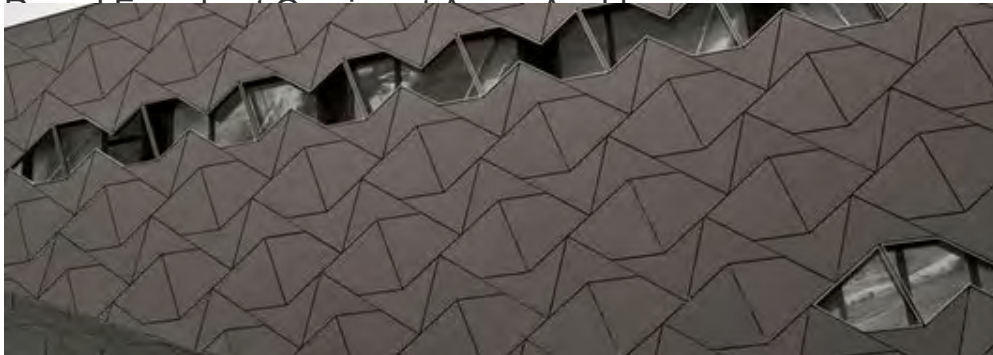
TECU®
Copper Surface - Classic Coated



Rodeca



Alusion



EQUITONE
Fiber Cement Facade Panel Natura



Grespania
Porcelain Tiles - Icon Bricks

Project location

Address: Kaisaniemenkatu 5, 00100 Helsinki, Finland



Location to be used only as a reference. It could indicate city/country but not exact address.

Library of Xinjiang University Institute of Science and Technology / THAD



[Share](#)

LIBRARY • AKSU, CHINA

🏠 Architects: THAD (Architectural Design and Research Institute of Tsinghua University)

📏 Area : 21298 m²

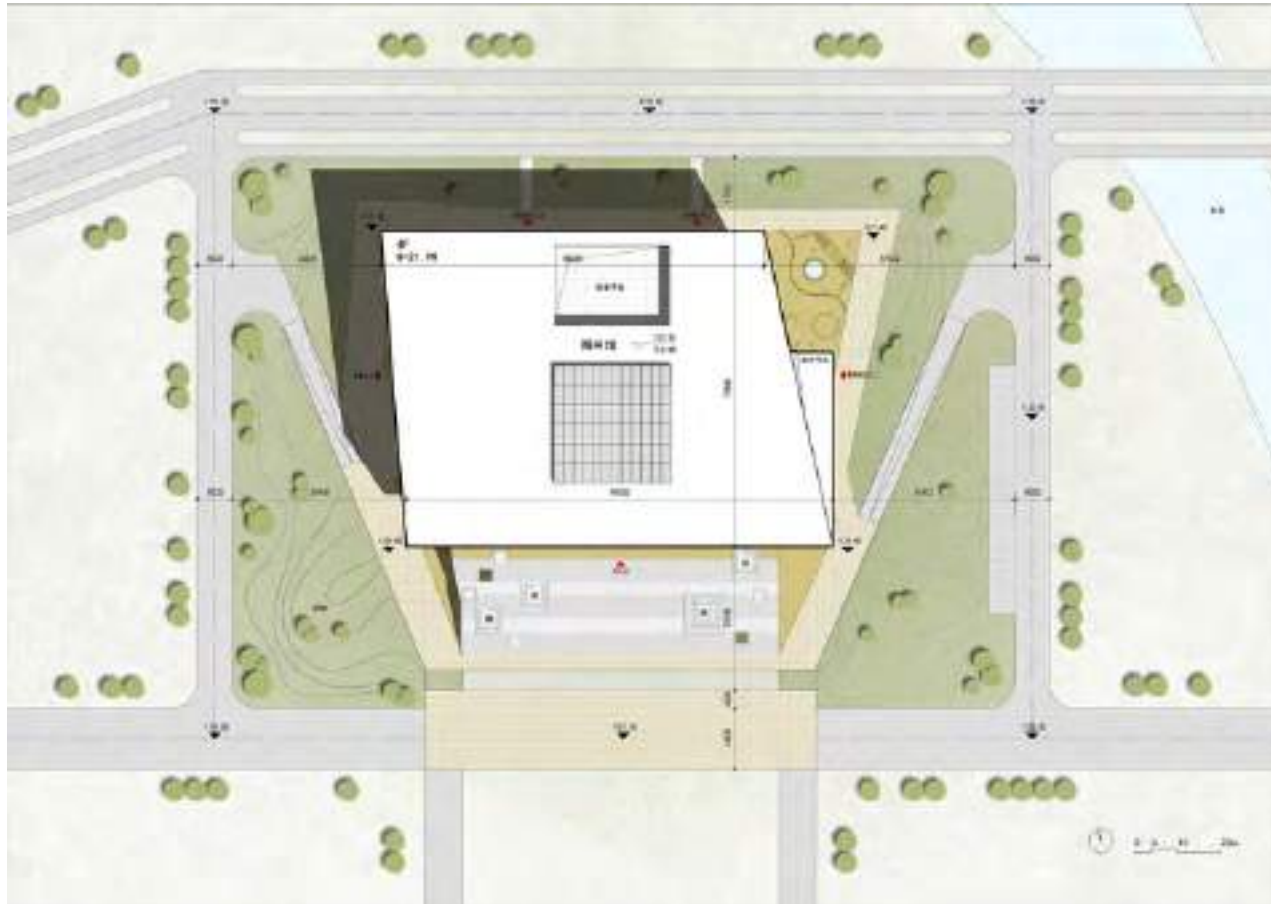
📅 Year : 2015



Project Overview

Xinjiang University Institute of Science and Technology is located in Wensu County of Aksu Prefecture, Xinjiang Uygur Autonomous Region. It covers a land area of 1,904,000 square meters and has a total floor area of 687,000 square meters. Approximately 15,000 students will study here according to the university's long-term plan. Academic Buildings, Library, Laboratory, Training Center, Dormitory, GYM, Auditorium, Conference Center, Administration and Management Buildings, etc.

Situated on the axis across the main gate, the 21.9-meter-tall library building is the architectural centerpiece of the campus. The Library is a 4-storey building with a floor height of 5.2 meters. The site area is 27,000 square meters and total floor area is 21,298 square meters. The building not only functions as the library, but also as the archive, reading, research and Information Center of the university.



Highlights

01 The form of the building indicating the concept of “Scroll”

The design adopts the concept of “scroll”, with which the regular stacking of floors is transformed into a convoluted continuous space. Upon completion, the whole building looks like a thick scroll resting on a huge base.



02 Façade design mirroring natural landscape

Inspired by the image sampling technic of the parametric design, an image of Mount Tomur of the Tianshan Mountains is chosen and processed. According to the brightness of individual pixels, the curtain wall on the south façade is designed as a matrix of perforated aluminum plate with different aperture sizes, the manufacturing of which is realized by rationalizing the complexity through CNC technology. During the implementation process, the size of each aluminum plate is set as 1500mm*900mm. The perforations are done with different diameters ranging from 18mm to 250mm and arranged with a spacing of no less than 50mm. As a result, a vivid image of Mount Tomur is presented on the façade to achieve a strong architectural expression of natural landscape. The real Mount Tomur is also visible in distance, creating an interesting contrast with the architecture.



03 Dynamic campus facility

Spaces such as outdoor gallery, cantilever balcony, study room, corridor around the atrium and roof terrace are very popular and well utilized. All kinds of events and performances organized by students are held in these cantilevered spaces, which are exactly the results of the “scroll” concept. In addition, areas for resting and discussions are arranged accordingly to make the library a place full of vitality. Its distinctive architectural presence has gained wide recognition and positive feedback from local communities.

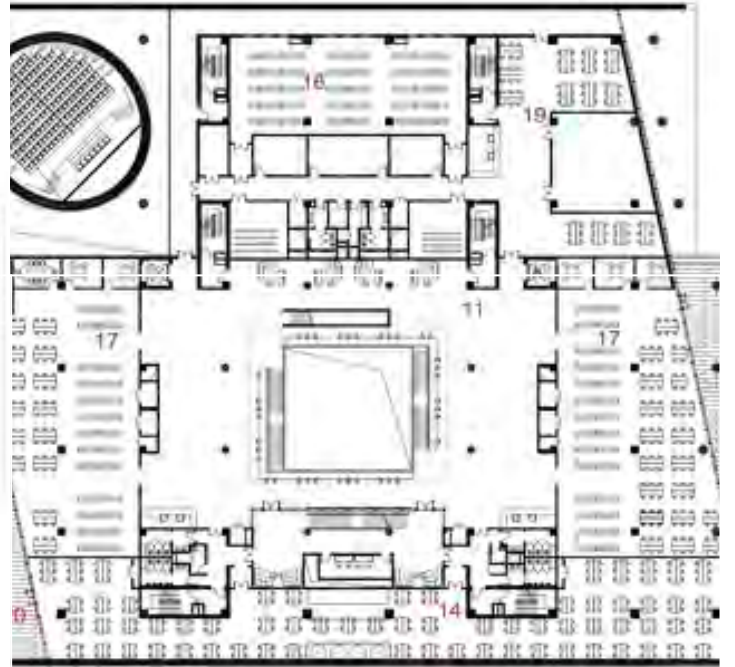
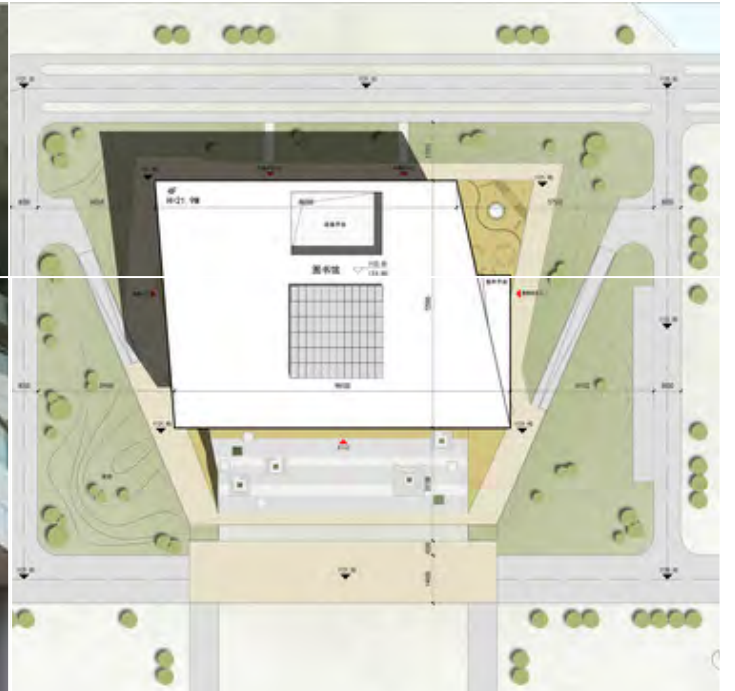


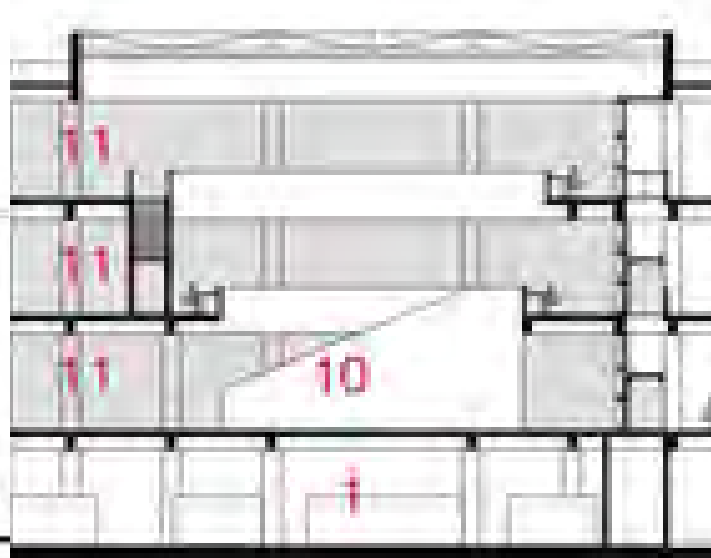
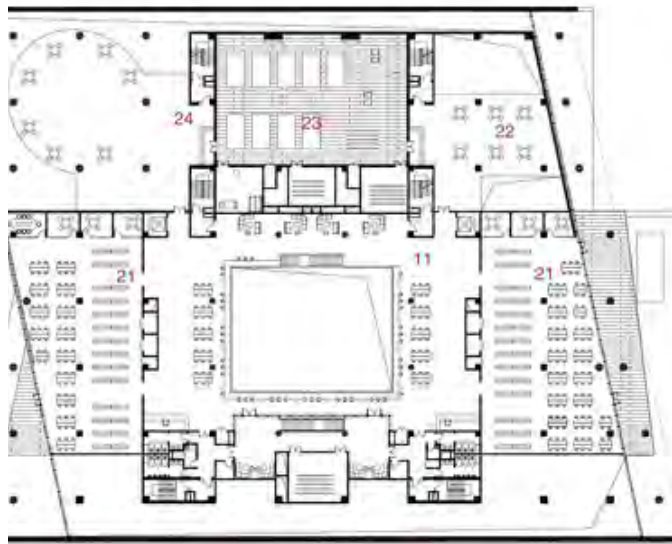
At present, the library has become the landmark building of the university, which is the only Science and Technology university in southern Xinjiang. It is also the largest school library in this area. Since completion, it has been serving over 2,500 teachers and students. In line with the university's mission to serve the regional economic and social development, the library becomes a part of the effort to cultivate high-level professional talent for the economic and social development of southern Xinjiang.



Project gallery







- 图书馆 7 设备用房 13 周转书库 19 查阅区
- 5 阅览 8 南侧入口大台阶 14 学生自修室 20 室外平台
- 6 研究 9 入口门厅 15 期刊阅览 21 人文社科阅览
- 1 中心 10 电子检索 16 报告厅 22 休息厅
- 2 中心 11 休闲阅览 17 自然科学阅览 23 冷却塔
- 3 中心 12 电子阅览 18 密集档案库 24 报告厅屋面

- 1 Compact Shelving Books 0 Entrance Hall 17 Natural Sciences
- 2 Faculty Reading Room 10 E-resource Retrieval 18 Compact Shelving Archives
- 3 Faculty Research Room 11 Leisure Reading 19 Reference Service
- 4 Information Center 12 Electronic Reading Room 20 Outdoor Terrace
- 5 Office 13 Stack and Re-shelving 21 Social Sciences
- 6 Cataloging Center 14 Study Room 22 Lounge
- 7 Equipment Room 15 Periodicals 23 Cooling Tower
- 8 South Entrance 16 Lecture Hall 24 Lecture Hall Roof



Studco
Wall Stop Ends - EzyCap



Lunawood
Thermowood Battens

Aparici
Porcelain Tiles - Brickwork

Project location

Address: Aksu, Xinjiang, China



Location to be used only as a reference. It could indicate city/country but not exact address.

University of Indonesia Central Library / Denton Corker Marshall



[Share](#)

LIBRARY, UNIVERSITY •

Architects: Denton Corker Marshall

Text description provided by the architects. Selected in an open design competition, the scheme by Denton Corker Marshall for a new library for a university of international standing deftly bridges the past and the present. Located in a highly visible and central site on the side of the

campus lake, its circular form responds to the strong circular buildings and roadways that distinguish the campus pattern. Conceived as earth architecture, it cleverly integrates building and landscape to become an occupied tropical landform. More images and architects' description after the break.



A series of towers projects from the landform. Conceptually, they take inspiration from the ancient Indonesian practice of inscribing wisdom on stone tablets. The traditional reference makes the leap into modern day Indonesia as a series of abstracted stone tablets - 'prasasti' - rising from the circular grass-covered earth mound. The granite clad tablets of varying heights are 'carved' with narrow glazed bands allowing filtered light into the volumes below.



The circular landform is eroded on the lakeside opening up an amphitheatre with mature mahogany trees overlooking the lake. As well as identifying the main entry, this erosion allows light into the interior volume. The mound houses book stacks within five storeys, located on the outer edge of the circular plan. Beneath an insulating soil cover and concrete roof, rare manuscripts, books and research/reference materials are stored in a stable ambient temperature away from direct sunlight. Solid stone cladding and narrow bands of glazing further reduce heat gain, reducing the air conditioning load.



Closer to the center of the volume are reading areas which vary in form, depending on the shape of the individual tablets, from large open plan spaces to intimate reading rooms. Overlooking the lake, the upper floors house a variety of meeting and seminar rooms. By replacing faculty and departmental libraries, which previously scattered student activities, and incorporating new facilities – plaza, food court, bank, retail and a temporary exhibition space – the library becomes the university's new student hub, a site for interaction with others, as well as with knowledge.



Internal navigation is clearly conceived; open interiors offer clear lines of sight and encourage interaction. Vertical transportation is predominantly via pedestrian ramps, encouraging readers to walk rather than use lifts, and to enjoy the interior's spatial qualities. A series of

curvilinear ramps occupies the void between the stacks and reading rooms. Skylights marking axes of significance are cut into the mound above the lobbies and book stacks.



Rain water is captured for use on site, waste water is treated and recycled and energy consumption is minimized. Maintaining existing mature trees and vegetation on the 2.5 hectare site is an important part in the design which, together with green roofs, ensures a large area of the site is retained as landscape. An inspiring landmark, the library belongs to and enhances the university campus.



Recommended Products



Rodeca
Round Facade at Omnisport Arena Apeldoorn



Studco
Access Panels - AccessDor



Acoustical Surfaces
Studio 3D Soundproof Interior Doors



Kriskadecor
Metal Fabric - Outdoor Cladding



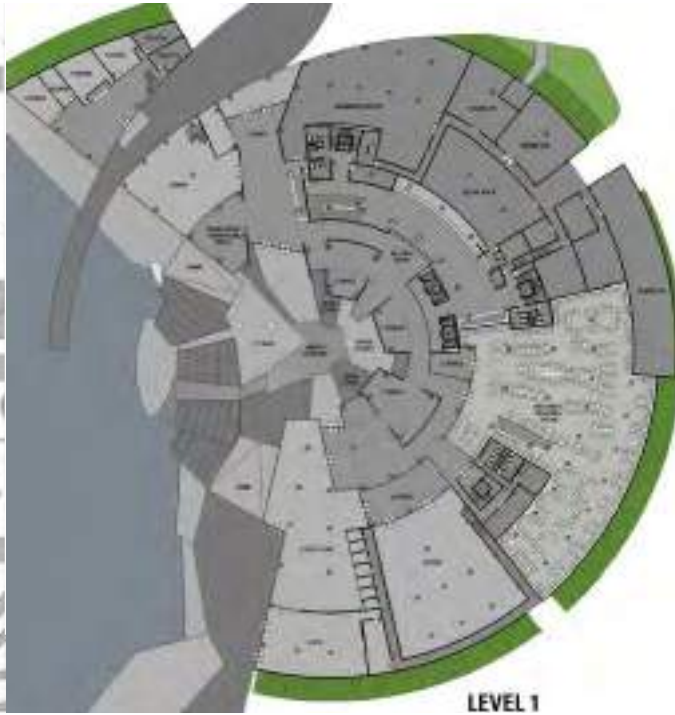
EGGER
Multiple Purpose Board - OSB 3

Project gallery



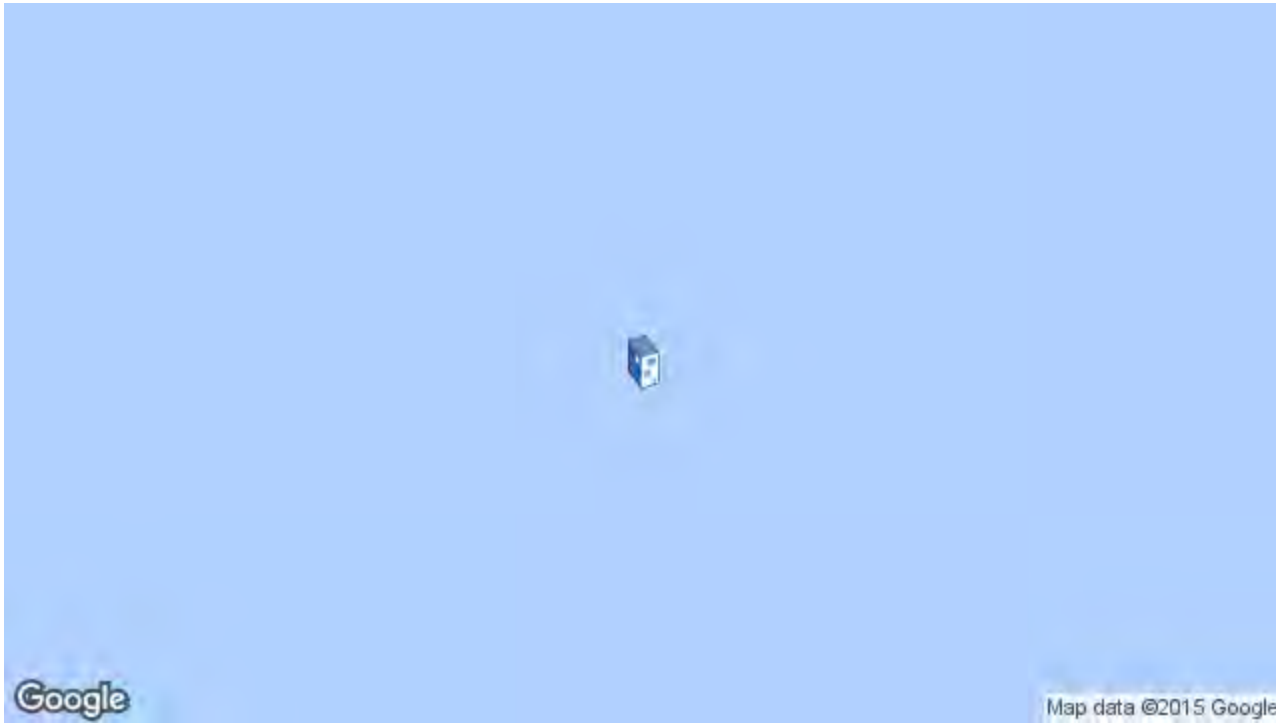


LEVEL 4



LEVEL 1

Address: Indonesia



Location to be used only as a reference. It could indicate city/country but not exact address.

Snøhetta Designs New Library for Temple University in Philadelphia



Written by **Karissa Rosenfield**

[Share](#)

Snøhetta is collaborating with Stantec to design a library for Temple University in Philadelphia, Pennsylvania. Envisioned as the campus' "social and academic heart" for students and the surrounding community, the new building will house a "variety of study spaces, resource centers, sophisticated information technology, public spaces and event hall" upon completion in Fall 2018.



From the architects: The design is inspired by the historic academies of Greek antiquity, where social spaces for exchanging ideas were primary and storage of written content took a secondary role. Snøhetta's design challenges the traditional typology of the research library solely as a repository for books and archives, and instead provides a diversity of spaces that will spark chance encounters, enable collaboration, and encourage knowledge-sharing amongst its users. Notably, the new library uses an automated book retrieval system to store the majority of the University's more than two million volumes. The ASRS significantly reduces the amount of space needed to store books and allows the building to provide more collaborative learning space and student resources.



Located at the intersection of two major pedestrian pathways and adjacent to a future campus quadrangle, the library will anchor a new academic and social core for Temple University. The surrounding landscape of terraced plazas step up to the library entrances, providing outdoor classrooms and opportunities for informal gatherings.

The new library's architecture is defined by a solid base clad in vertical sections of rough stone that references the materials of the surrounding campus context. The grand wooden arched entrances cut into the stone volume and announce a welcoming point of entry. Expanses of pleated frameless glass supported on steel mullions create maximum transparency at the major entrances. The arches continue into the building, forming a three-story domed atrium lobby with white terrazzo floors. The lobby, café, central atrium and 24/7 zone, which is unimpeded by security checkpoints, will welcome in the surrounding community as well as Temple students.



An oculus carved into the lobby's domed atrium opens up views to each corner of the building, serving as a wayfinding anchor and placing the user at the center of the library's activity. As users circulate the building, this visual and physical connectivity allows the individual to take stock of their bearings and encourages students to use all of the building's resources. In addition to interactive and generative learning spaces, the library also provides moments for introspective study. Arriving at the top floor, the visitor reaches a sun-filled reading room with traditional browsing stacks. Its light and airy character rises from the more opaque base, and opens up to the library's green- roof via a terrace with stepped seating, providing a unique outdoor space for students.



This new library will put Temple University at the forefront of progressive research institutions. Acting as a new social, cultural, and intellectual hub for the university and surrounding community, the design serves the contemporary needs of a world-class research facility and its students.



Architects

Snøhetta

Location

Philadelphia, PA, USA

Executive Architect

Stantec

Client

Temple University

Area

225000.0 ft²

Project Year

2018

Photographs

Snøhetta

Location

Philadelphia, PA, USA

Project Year

2018

Photographs

Courtesy of Snøhetta

Area

225000.0 ft²

Project gallery



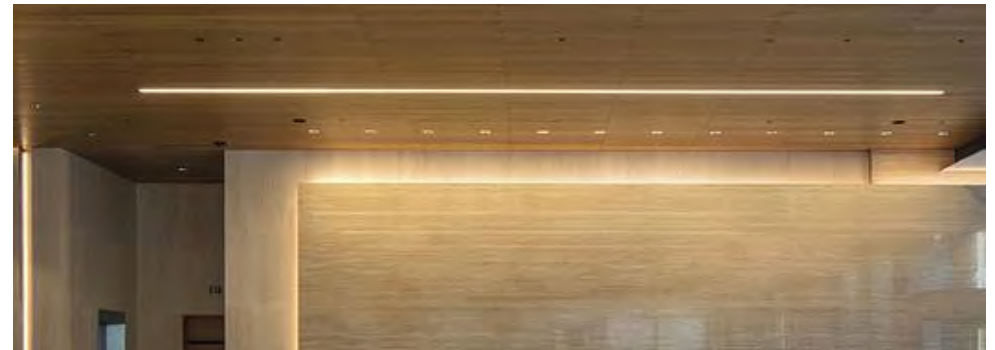
Recommended Products



Reggiani
Circuit Track Lighting System - Yori Evo 48V



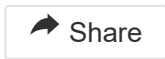
PARKLEX PRODEMA
Exterior Wood Cladding - NATURCLAD - W



Hunter Douglas Architectural (Europe)
Wood – Veneered Wood Toplevel® Ceiling & Wall Panels



EGGER
Laminates



About this office



Snøhetta
Office

#TAGS

Projects

Unbuilt Project

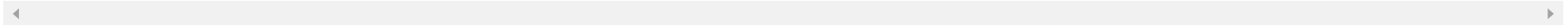
Cultural Architecture

Library

Philadelphia

Stantec

United States



Published on January 26, 2016

Musashino Art University Museum & Library / Sou Fujimoto Architects



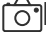
[Share](#)

MUSEUMS & EXHIBIT, LIBRARY, UNIVERSITY • JAPAN

 Architects: Sou Fujimoto Architects: Sou Fujimoto

 Area : 2883 m²

 Year : 2010

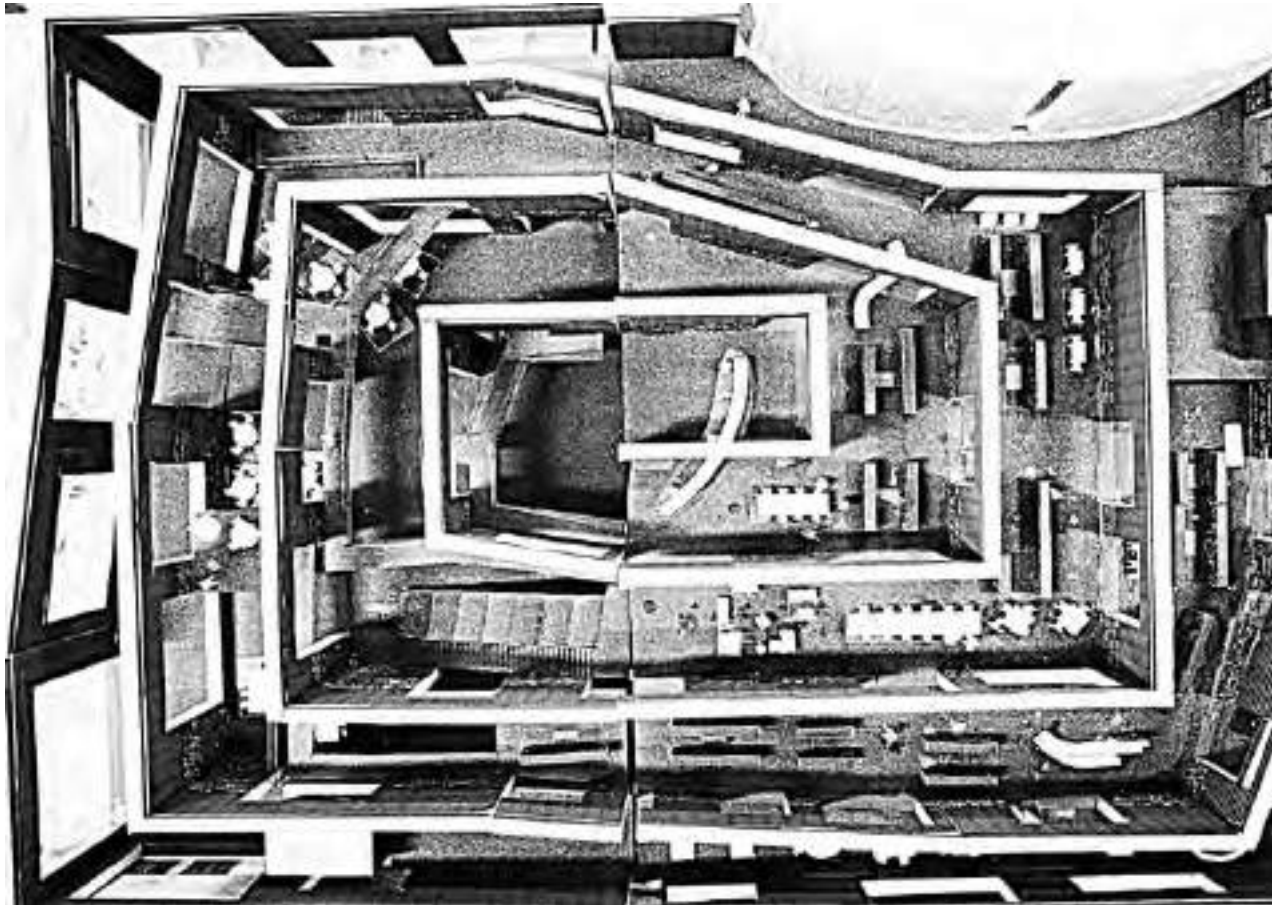
 Photographs : Daici Ano

Text description provided by the architects. One of the most interesting projects I've seen in a while, the Musashino Art University Museum & Library proposes a new relation between the user and the books, surrounded and sheltered by them.



We had the chance to ask Sou Fujimoto about the challenge of designing this program in the information age, as you can see on the above video.

This project is a new library for a highly distinguished art universities in Japan. It involves designing a new library building and refurbishing the existing building into an art gallery, which will ultimately create a new integration of the Library and the Art Gallery.



The project described hereinafter is the plan of the new library which sits within the first phase of the total development.

Acting as a huge ark, a total of 200,000 units, of which 100,000 will be in an open-archive, while the other half, within a closed-archive, rests within this double-storey library of 6,500m² in floor area. It is a library made from bookshelves.



When I thought of the elements which compose an ultimate library, I imagined books, bookshelves, light and the atmosphere. I imagined a place encircled by a single bookshelf in the form of a spiral.

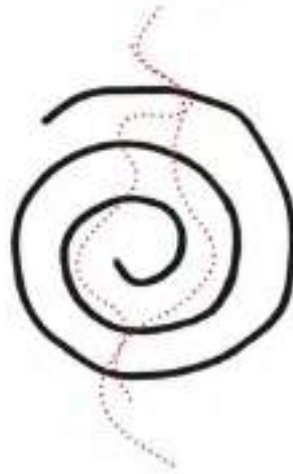


The domain encased within the infinite spiral itself is the library. An infinite forest of books is created from the layering of 9m high walls, punctuated by large apertures.

Searchability



Strollability

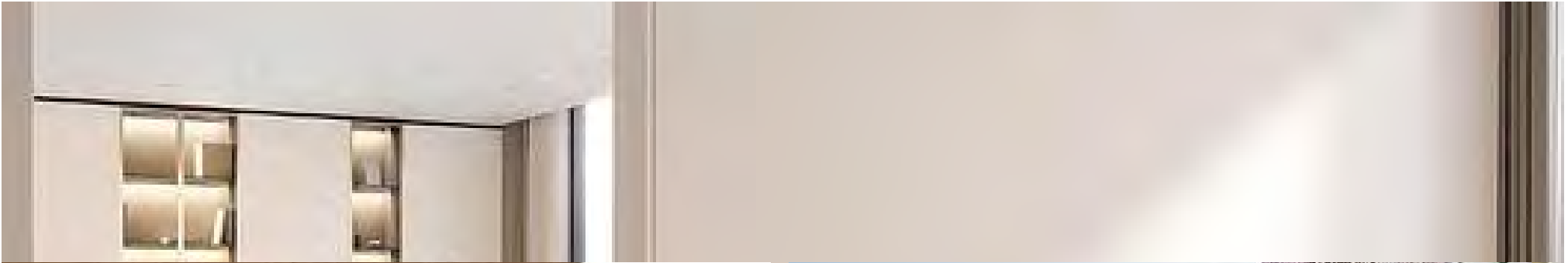


This spiral sequence of the bookshelf continues, eventually wrapping the periphery of the site as the external wall to allow the external appearance of the building to share the same elemental composition of the bookshelf as the library.

One's encounter with the colossally long bookshelf, within the university landscape, registers instantaneously as a library, yet astonishing in its dreamlike simplicity. It is the library most library-like and the simplest library.



Recommended Products



Kebony
Stucco
Glazing - Shiplap Boards - Kebony Clear RAP
Wall Stop Ends - EzyCap



Flexbrick
Ceramic Textiles for Facades



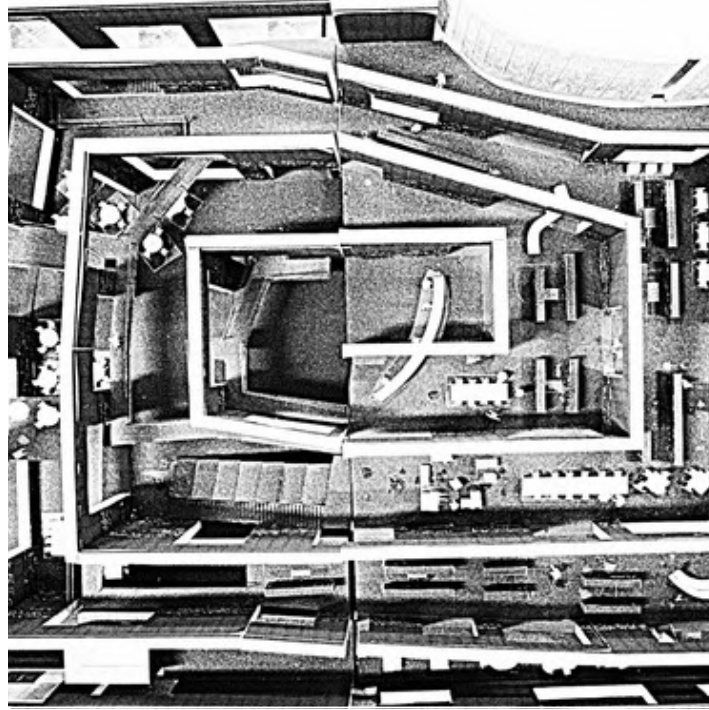
Alusion
CMSK Xi'an Zhenguanfu Sales Centre - Alusion™ Stabilized
Aluminum Foam

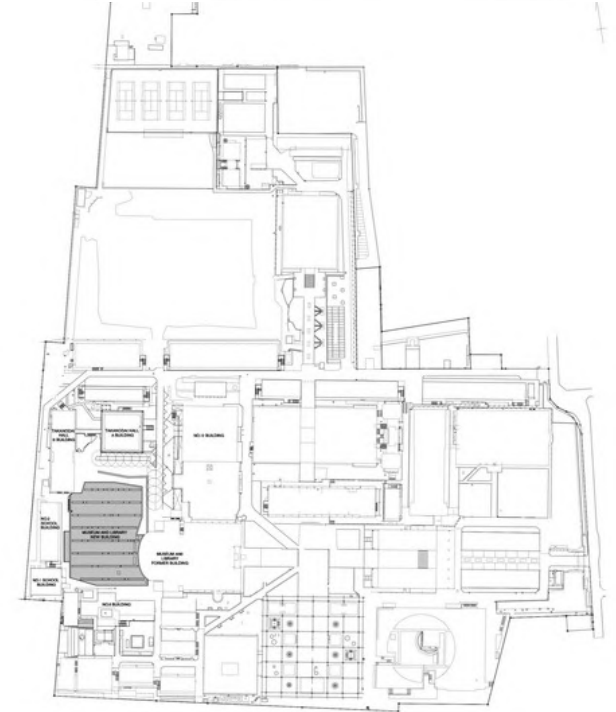
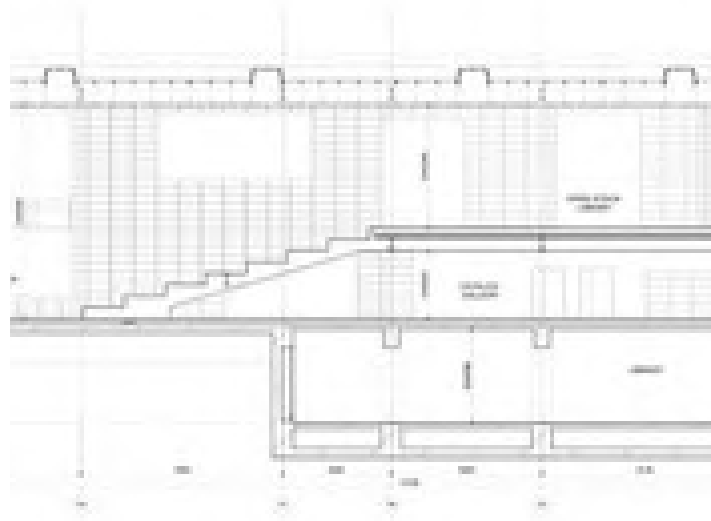


EGGER
Feelwood Worktops With Edging

Project gallery







Project location

Address: Tokyo, Japan



Location to be used only as a reference. It could indicate city/country but not exact address.

Library of South University of Science and Technology of China / URBANUS




[Share](#)

LIBRARY, UNIVERSITY • SHENZHEN SHI, CHINA

 Architects: URBANUS

 Area : 10728 m²

 Year : 2013

 Photographs : Alex Chan

Client : Shenzhen Public Works Bureau, South University of Science and Technology Infrastructure Office

(Ldi) Structure/ Mep (Mechanical, Electrical, Plumbing)/Interior : Shenzhen Institute of Building Research Co.Ltd

Lead Architect : Yan Meng, Hui Wang

Project General Manager : Changwen Zhang

Project Architect : Yilin Lin, Aidi Su

Team : Zhiyi Huang, Jun Wang, Lingli Zhu, Shengfen Xie, Jiajia Li, Lansheng Chen, Shuang Liu, Tu Li, Jinbin Wu, Dianbin Yao

City : Shenzhen Shi

Country : China

Did you collaborate on this project?

LESS SPECS

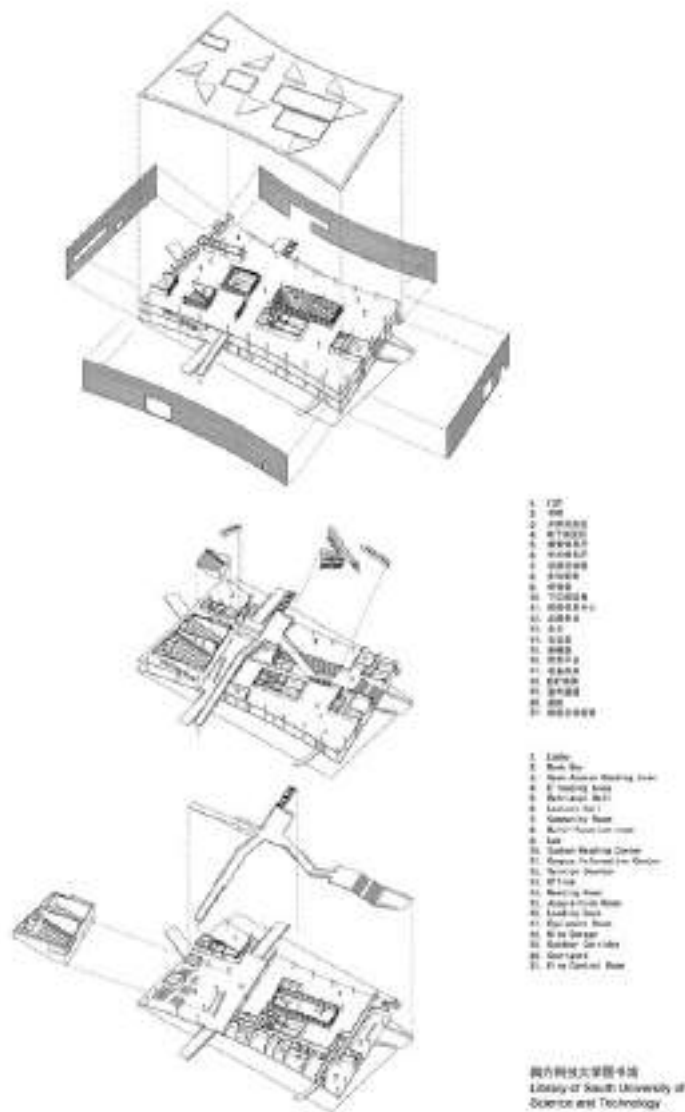


Text description provided by the architects. Nowadays, as books cease to be the primary carrier for the transfer of knowledge, the meaning of “The Library” is also shifting. Recognizing this, the design not only incorporates the conventional programs of libraries, but also attempts to excavate what is embedded in libraries the public nature that is closely associated with today’s society.



Located at core of the campus, the library features a slightly curved façade, maintaining a humble stance towards its surroundings. Students and teaching staff who commute between the academic area and the living area on a daily basis will always pass by the library, regardless of which direction they are heading.





Such circulation gives rise to a corridor system that crisscrosses throughout the building, referencing the traditional Cantonese commercial arcade adapted to hot and rainy climates, attracting the public to walk to the inside. Along the north-south corridor are the public programs, including the main entrance lobby, academic auditorium, association activity room, book bar, and so forth.



The corridor on the second floor extends from the west to the east—it passes by the book bar, skylight, multi-function hall, bamboo garden, reading area, semi-outdoor platform, and then finally ends at the Baishu Garden on the east. Overlapping circulation allows people to meet and communicate with each other; they can stop by to read or participate in academic activities, which will naturally become a part of their daily life.



These create opportunities for a physical library to become more lively and inviting than a virtual library. On the top floor, 3,800 square meters of clear space serves an open-shelf reading area. In order to facilitate the role exchange between the modularized book collection area and the reading area,

the structural load of this floor is customized for book collection areas; the column span is unified as 8,400*10,800mm.



GRC (Glass Fiber Reinforced Concrete) was originally specified for the library façade. With the consideration of façade scale, structural load, sizes of fabricated structural components, local shading requirement, and other factors, the GRC unitized component was designed into a light and high-strength hollow module that had a dimension of 1,800*675*400mm; its hollow core was then filled with insulating materials, with mold release and curing treatment.





Due to various reasons, the client requested the material to be changed before construction. Eventually, silver grey, semi-unitized aluminum modules were assembled together in a staggered fashion. The aluminum modules were both water-proof and sunlight resistant, and were assembled following the original approach. For the crisscrossing corridors, orange high-strength fiber cement boards were applied to the ceiling and the wall. The orange color extends from the outdoor public space to the indoor public area, inviting people at the corridors to enter the building.



Recommended Products



Danpal
Skylight - Danpatherm RK7
EQUITONE
Fiber Cement Facade Panel Natura

LAMILUX
Flat Roof Access Hatch Comfort Duo

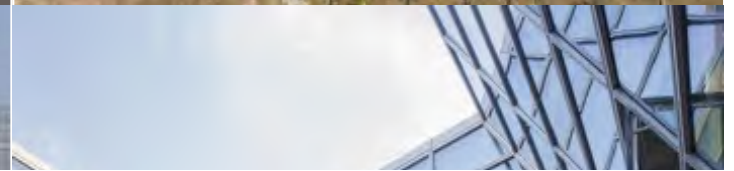
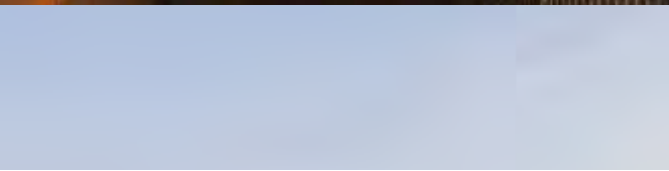


Krskadecor
Metal Fabric - Outdoor Cladding

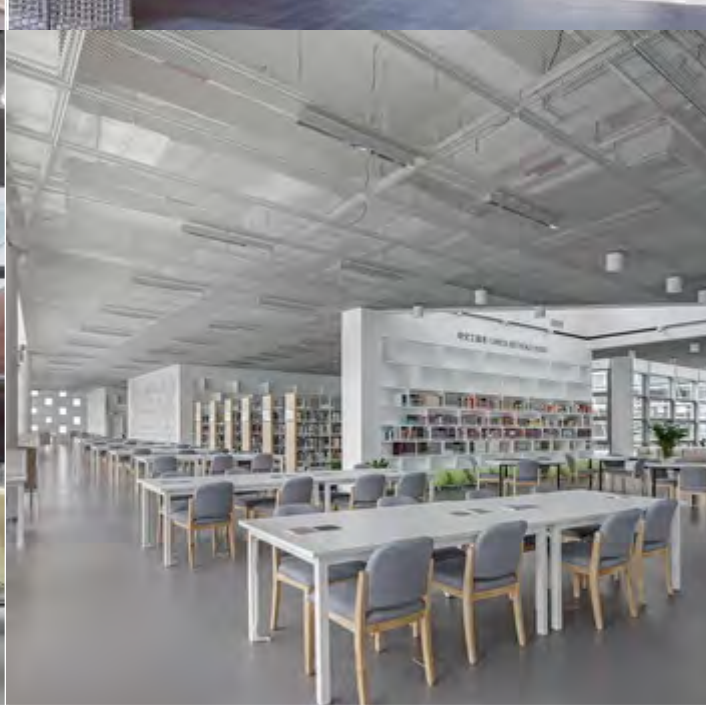


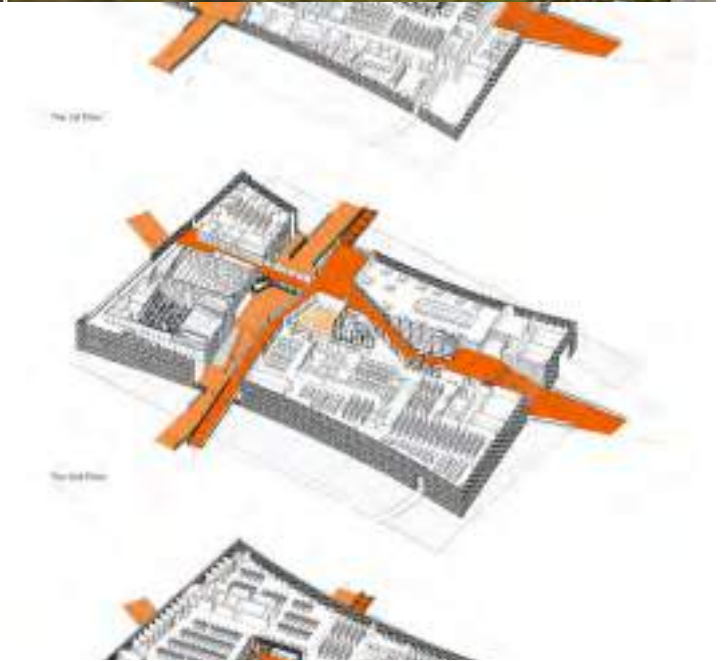
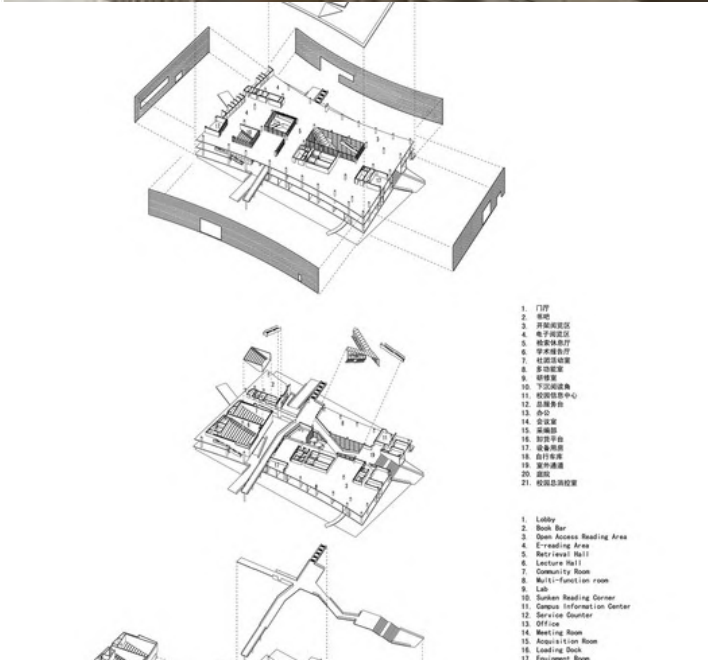
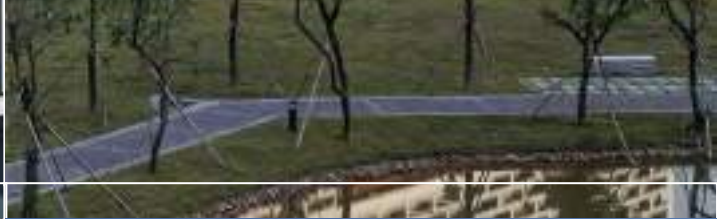
C.R. Laurence
Balanced Doors

Project gallery



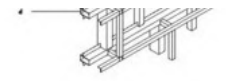
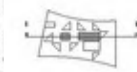
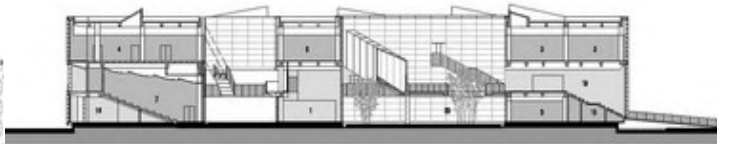
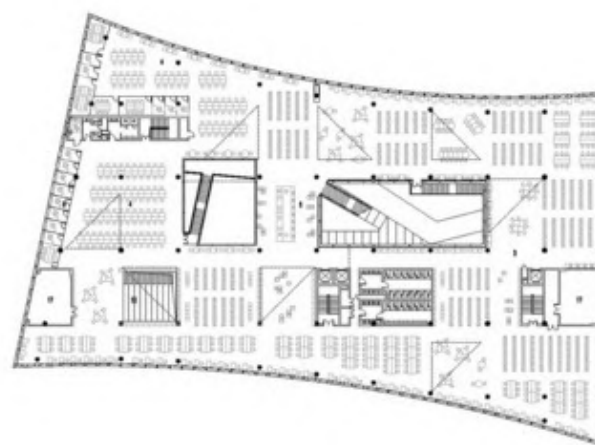
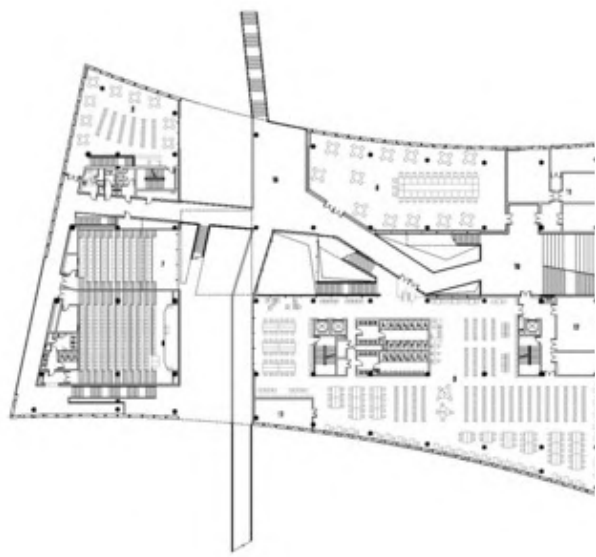
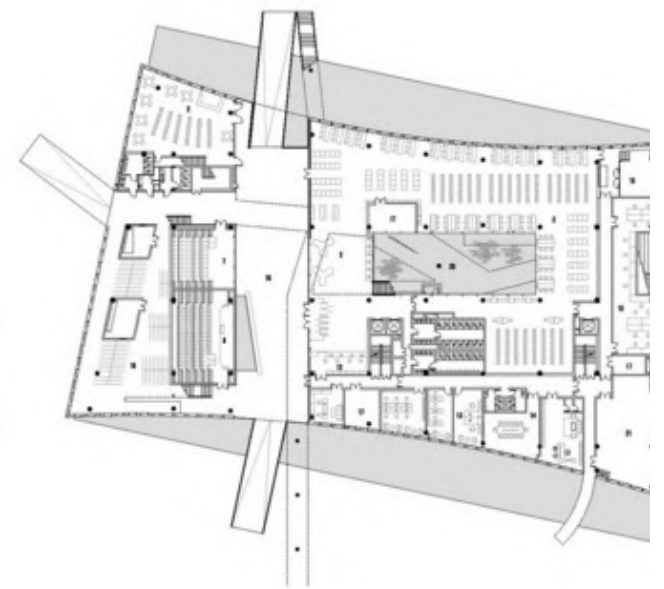
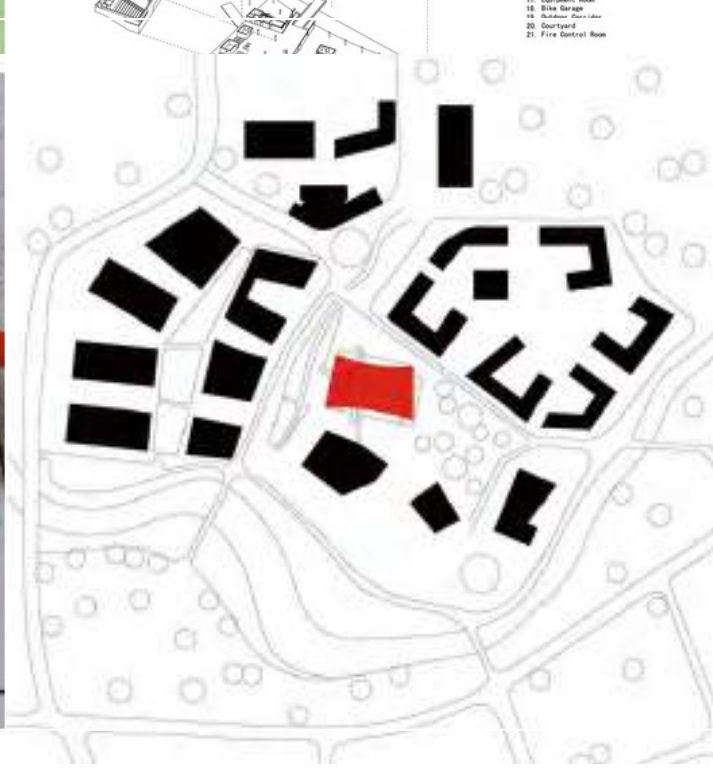
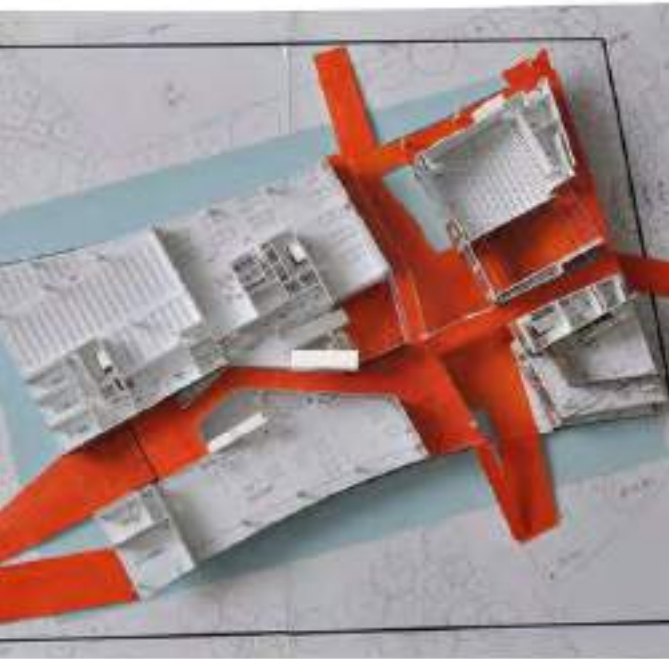


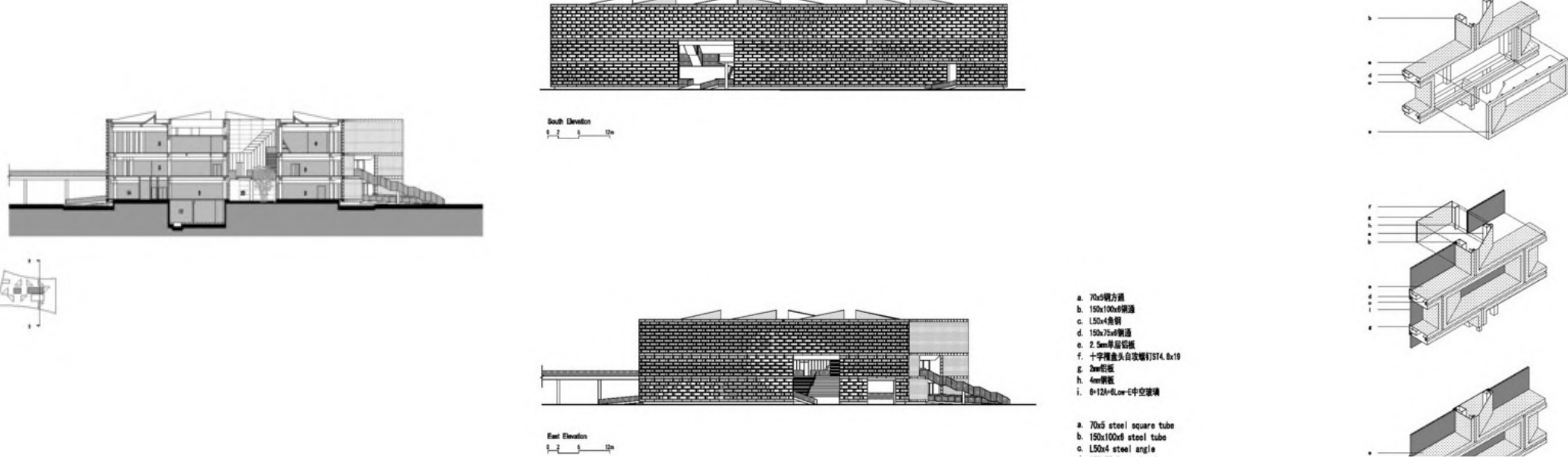




- 1. 门厅
- 2. 书吧
- 3. 开放阅览区
- 4. 电子阅览室
- 5. 研修报告厅
- 6. 学术报告厅
- 7. 社区报告厅
- 8. 多功能厅
- 9. 咖啡厅
- 10. 下沉庭院
- 11. 校园信息中心
- 12. 总服务台
- 13. 办公室
- 14. 会议室
- 15. 设备用房
- 16. 自行车库
- 17. 设备用房
- 18. 自行车库
- 19. 自行车库
- 20. 道路
- 21. 校园总服务台

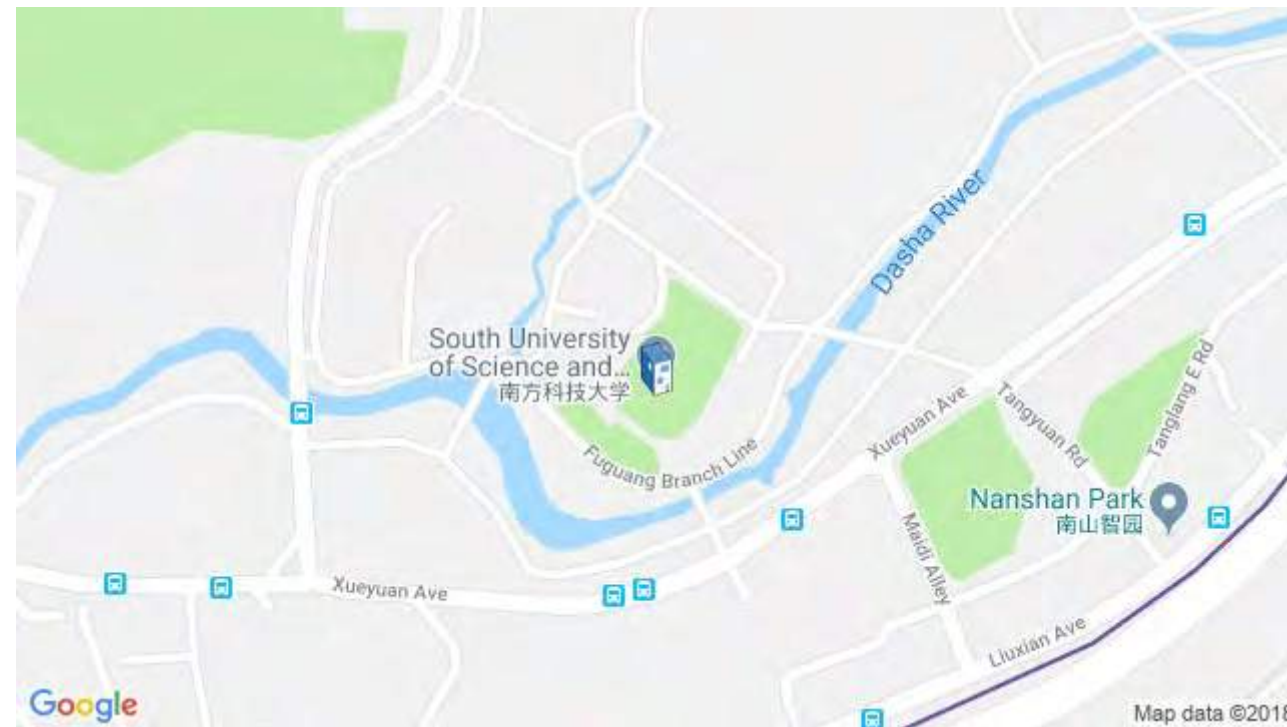
- 1. Lobby
- 2. Book Bar
- 3. Open Access Reading Area
- 4. E-reading Area
- 5. Retrieval Hall
- 6. Lecture Hall
- 7. Community Room
- 8. Multi-function room
- 9. Cafeteria
- 10. Sunken Reading Corner
- 11. Campus Information Center
- 12. Service Counter
- 13. Office
- 14. Meeting Room
- 15. Acquisition Room
- 16. Landing Dock
- 17. Acquisition Room





Project location

Address: 1088 Xueyuan Ave, Nanshan Qu, Shenzhen Shi, Guangdong Sheng, China



Location to be used only as a reference. It could indicate city/country but not exact address.

Library of Central University of Finance and Economics / China Architecture Design & Research Group



Curated by 韩爽 - HAN Shuang

[Share](#)

LIBRARY, UNIVERSITY • CHANGPING QU, CHINA

Architects: China Architecture Design & Research Group

Area : 30000 m²

Year : 2016

Photographs : Guangyuan Zhang

Manufacturers : Renault light plate decoration Co., Ltd., Beijing Country Wood, Beijing Dongfang Han Xing, Beijing Urban Construction Yatai Construction Group, Brocade Yuncheng Nine Xin Building Materials, Renault, Xi'an West Airlines Group Aluminum



Plane order

The plane is composed of seven strip space units with different width and width arranged along the north-south direction. The elevator, toilet, other service spaces and the shared atrium are integrated into three sets of spacing service units to separate the four sets of Reading Library units. The

whole building has formed a complex and strong contrast between the virtual and the real in the strict logical space system, and it has a strong sense of rhythm.



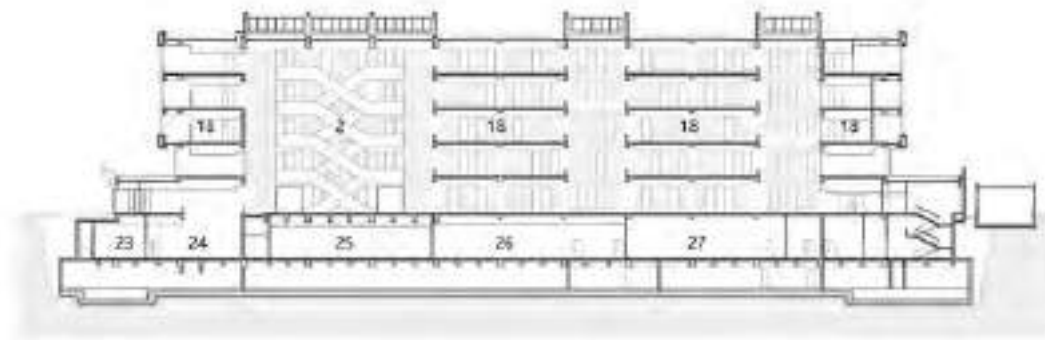


Interior and exterior space design

The main entrance of the library directly leads to the central hall, where we try to give the modern architectural space a classical scale and atmosphere. The building volumes encompass a sharing space, which is a 24 meters high cube-shaped structure, with a large saw-tooth skylight on top of it. On a clear day, the sunshine pours down, bring a harmonious rhythm of light and shadow to the interior.



From outside to the inside, the central hall echoes the entrance plaza, forming a spatial sequence with strong ceremonial sense, where rituals, gatherings, and other ceremonial events can be held. The central hall is surrounded by bookshelf walls on three sides, while the east side is open to the stack room and reading area. The reading area is north-south transparent.



剖面 Section

11 大堂 12 阅览室 13 贵宾室 18 多功能厅 23 贵宾室 24 大堂 25 多功能厅 26 多功能厅 27 书库

11 Lobby, 12 Reading Area, 13 VIP Room, 18 Multi-Function Hall, 23 VIP Room, 24 Lounge, 25 Multi-Function Hall, 26 Exhibition Hall, 27 Stock Room

0 2 4 8m

The direct light from the south side is scattered by the glass grille, which brings bright and comfortable natural lighting to the south side reading area. Through the open glass curtain wall, the diffused natural light and the rolling mountain view from the northern side provide a good daylighting and an excellent view to the reading area.



External architectural form

The exterior of the building is enclosed by fair-faced concrete slabs and glass curtain walls. The overall color is a plain gray. The rough surface of the concrete walls shows soft radiant, which presents different greyscales during different weathers and seasons. It renders complexity within simplicity.



Conclusion

Library carries the role of learning center in the contemporary university campus and it is a symbol of the academic spirit. Not only It provides a place for teachers and students to read and borrow books, but also provides a necessary place for them to conduct meditation, seminars and other activities. At the same time, library is a ritual space for its users to carry on campus activities. Therefore, it can be regarded as a splendid temple of mind for the teachers and students.



Recommended Products



Alusion
CMSK Xi'an Zhenguanfu Sales Centre - Alusion™ Stabilized Aluminum Foam



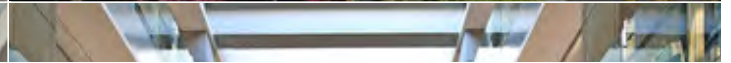
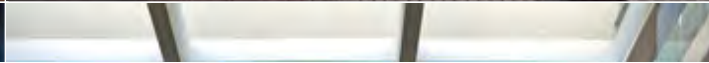
Lunawood
Thermowood Facades

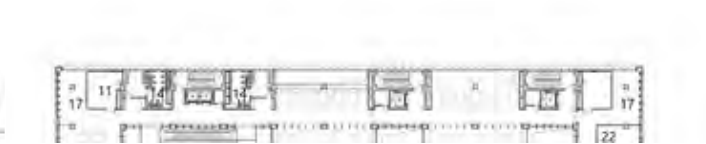


Kriskadecor



C.R. Laurence







Ground Floor Plan

- | | | | | | | |
|--------------------------|-------------------------|---|---------|-------------|----------|--------|
| 1 中央大厅 | 3 新书阅览室 | 4 工具书、报纸阅览室 | 5 新书阅览室 | 6 数字资源与报纸书库 | 7 采访室 | 8 办公室 |
| 10 数字资源 | 11 报纸书库 | 12 报纸书库 | 13 报刊室 | 14 卫生间 | 15 消防控制室 | 16 接待室 |
| 2 Lobby | 3 New Book Reading Room | 4 Reference Book/Newsprint Reading Room | | | | |
| 6 Digital Resources | 7 Interview Room | 8 Office | | | | |
| 10 Cataloging Collection | 11 Ventilation Room | 12 Stack Room | | | | |
| 14 Washroom | 15 Fire Control Room | 16 Front Office | | | | |

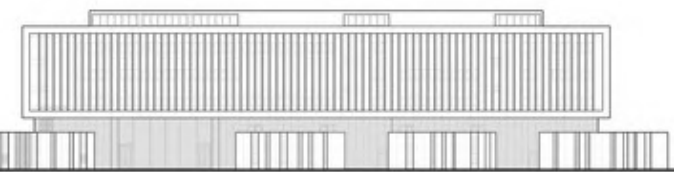
Standard Floor Plan

- | | | | | | | |
|-------------|-----------|-----------------|------------|------------|----------------------|-----------------|
| 13 卫生间 | 17 咖啡厅 | 18 阅读区 | 19 画廊 | 20 档案室 | 21 财务室 | 22 会议室 |
| 14 Washroom | 17 Coffee | 18 Reading Area | 19 Gallery | 20 Archive | 21 Accounting Office | 22 Meeting Room |



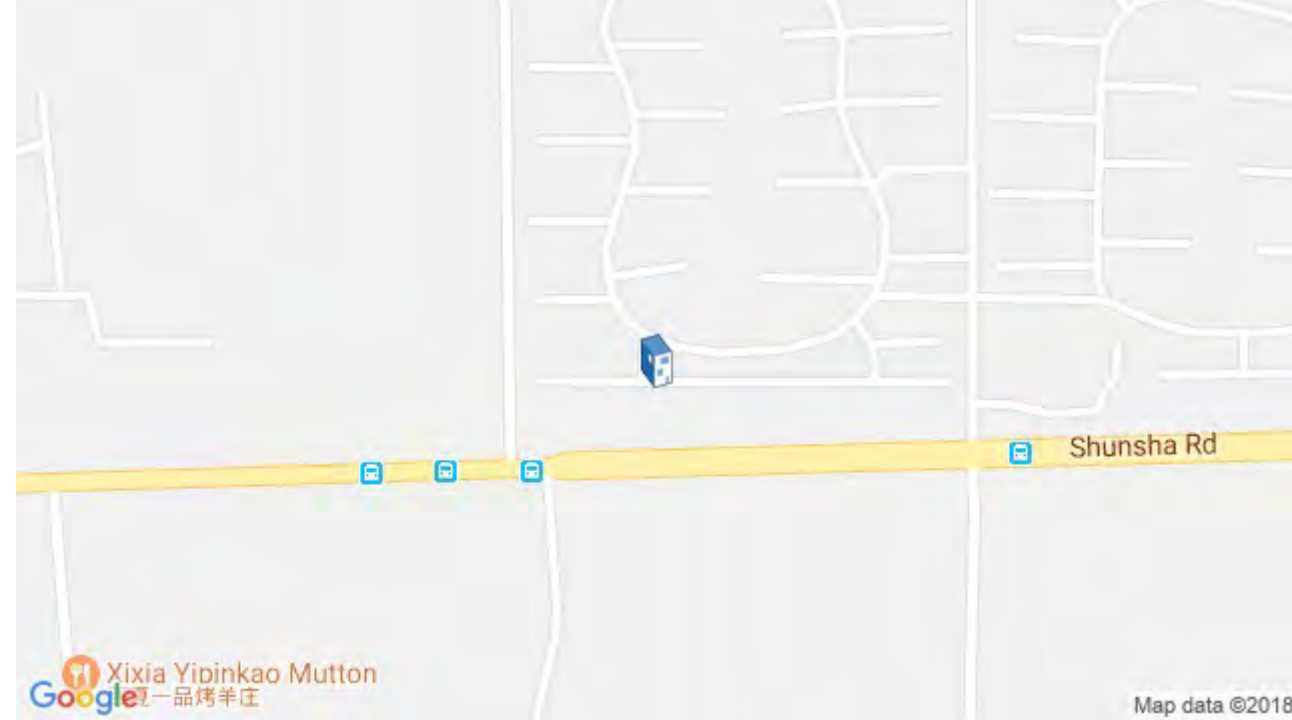
Top Floor Plan

- | | | | | | |
|--------------|-------------|-----------|------------------------|--------------------|---------------|
| 23 阅读区 | 24 贵宾室 | 25 多功能厅 | 26 展览厅 | 27 书库 | |
| Reading Area | 23 VIP Room | 24 Lounge | 25 Multi-function Hall | 26 Exhibition Hall | 27 Stack Room |



Project location

Address: Shun Sha Lu, Changping Qu, Beijing, China



Location to be used only as a reference. It could indicate city/country but not exact address.

شكرا لحسن الاصفاء

