

تصميم معماري III



م.علي سعد عبد الوهاب

جامعة المثنى

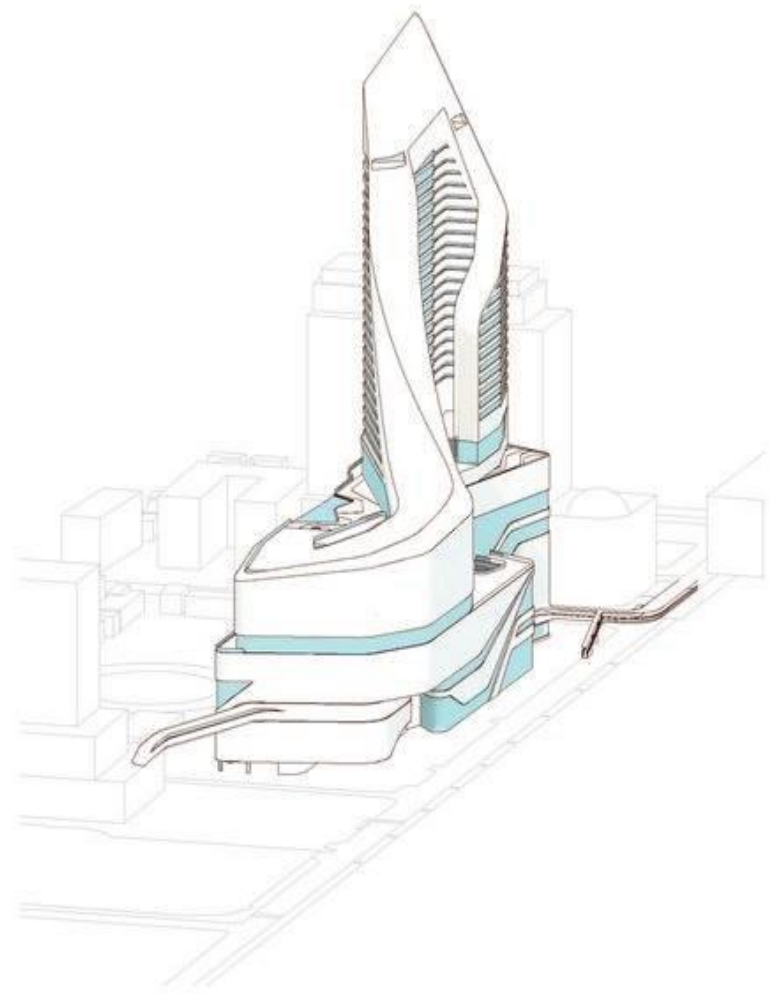
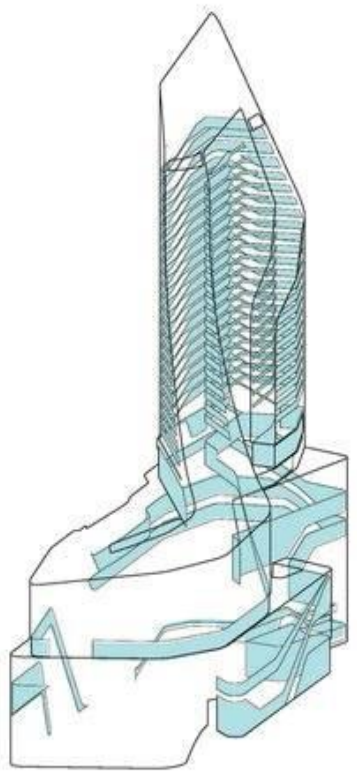
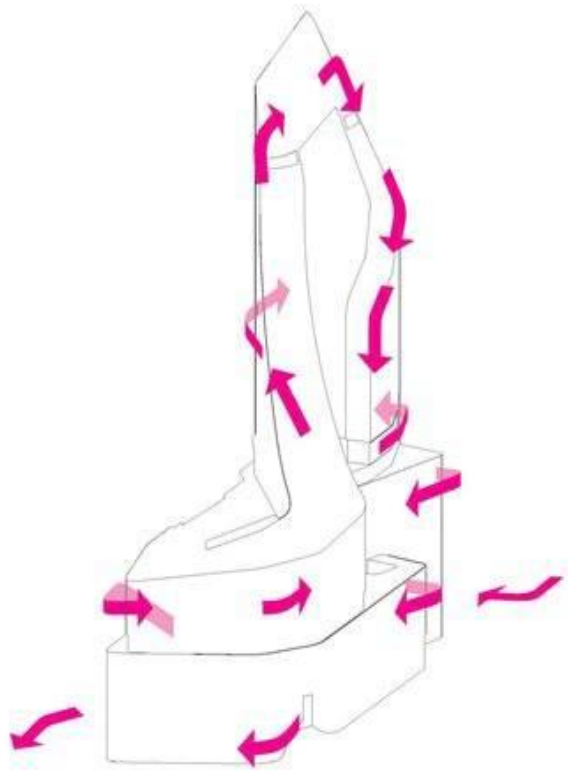
كلية الهندسة

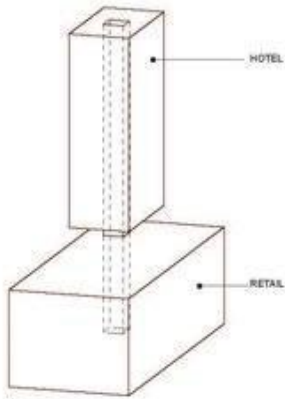
قسم هندسة العارة

المحاضرة رقم 6 - الاسبوع السادس
كيفية خلق افكار تصميمية 2
مشروع تصميم المكتبة المركزية - جامعة المثنى

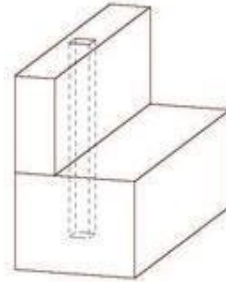


WRAPPING

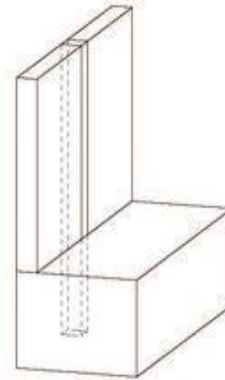




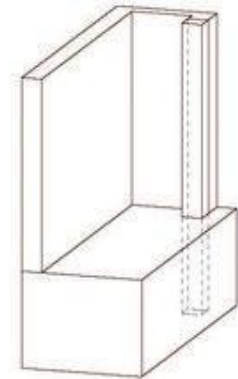
01 TOWER + PODIUM



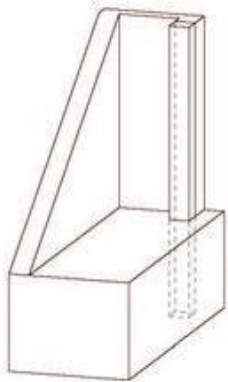
02 DOUBLE LOADED



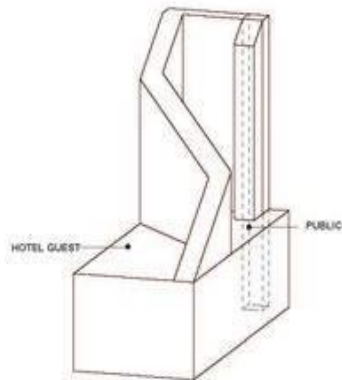
03 SINGLE LOADED



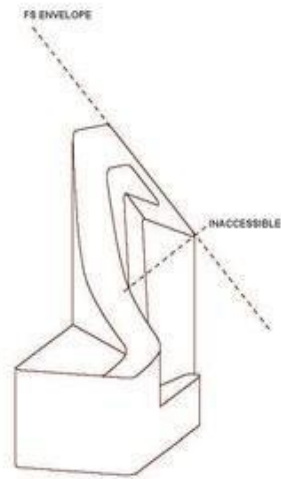
04 SINGLE LOADED



05 TERRACED TOWER



06 TOWER AS SPACE DIVIDER



07 ENVELOPE ADJUSTMENT



08 FINAL ENVELOPE





Guard Rail / Bollard



Clock / Reclining Bench



Info Kiosk / Shade



Bench Cluster



Planter / Bench



Picnic Table



Wave Bench



Split Bench



Wiggle Bench



Bend Bench



Lite Bench



Planter Bench



Bench Bench



+ Bench / Planter

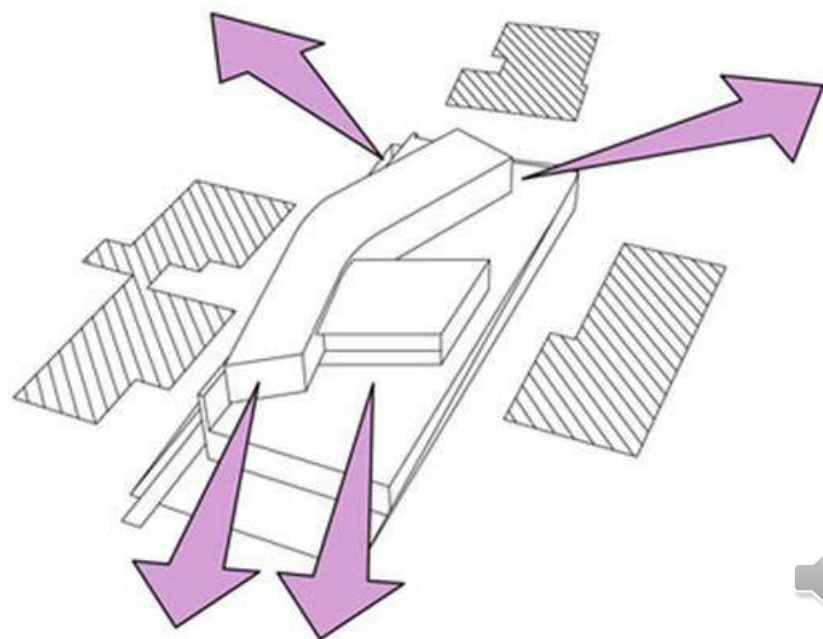
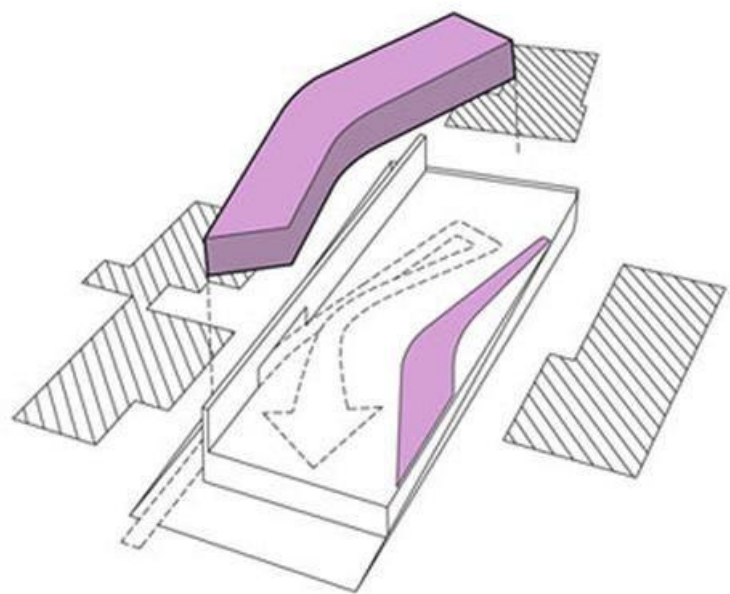
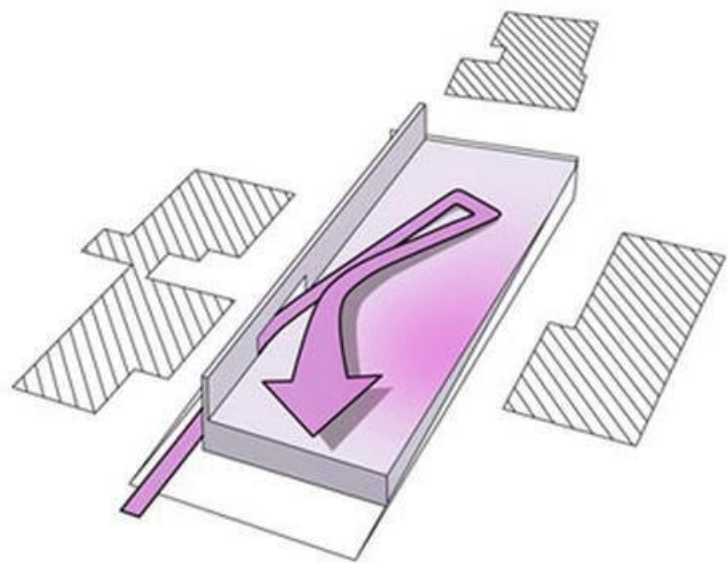
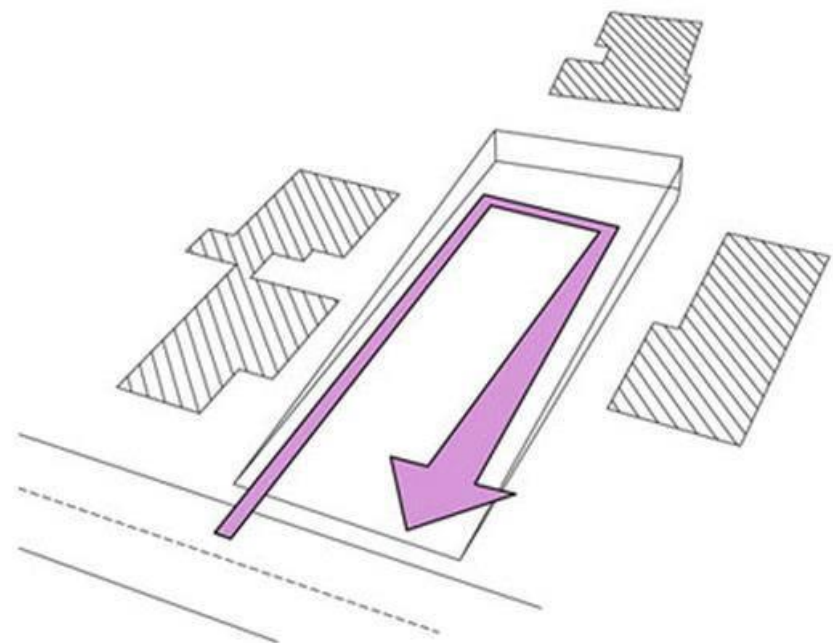


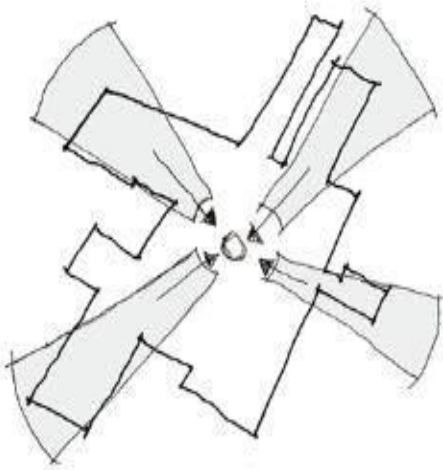
+ Reclined Bench

Multi-use Follie

Using the same language, we create multiple places to stay, play and entertain along the south dock path.

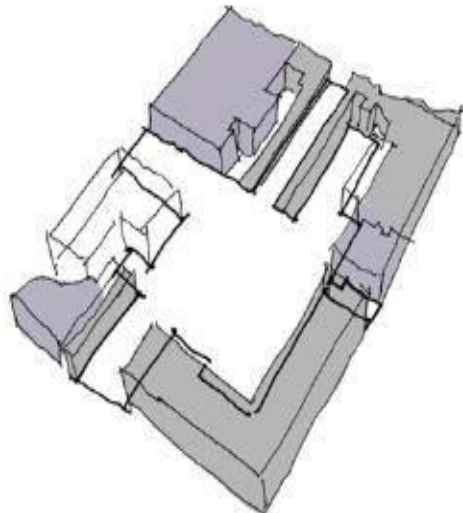






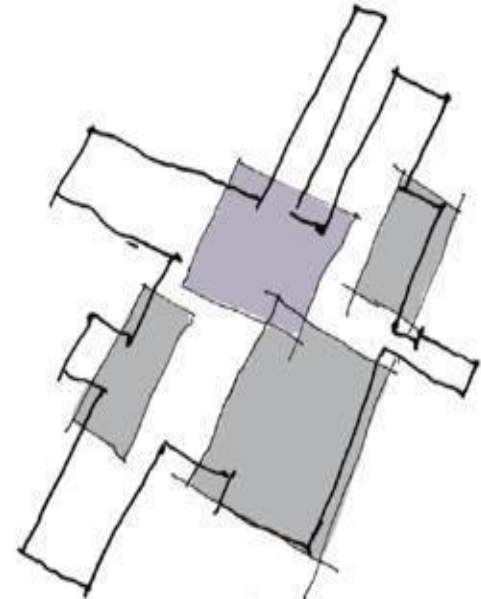
Opening the site and increasing access

Series of public spaces, leading to a new central square, defined by vertical element



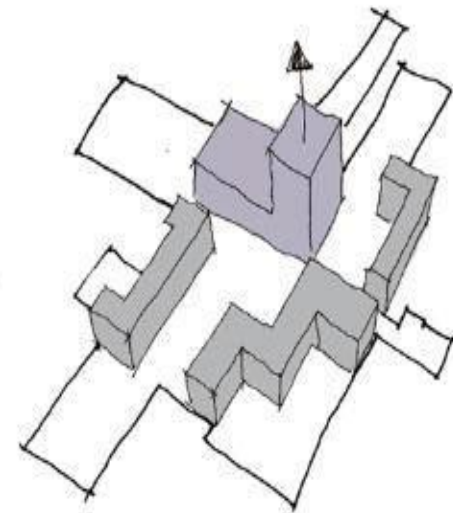
Consideration of wider site and urban context, uses of existing buildings

External spaces and building form defined by planes



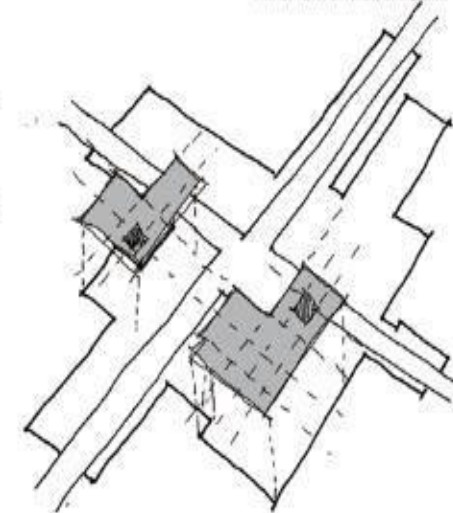
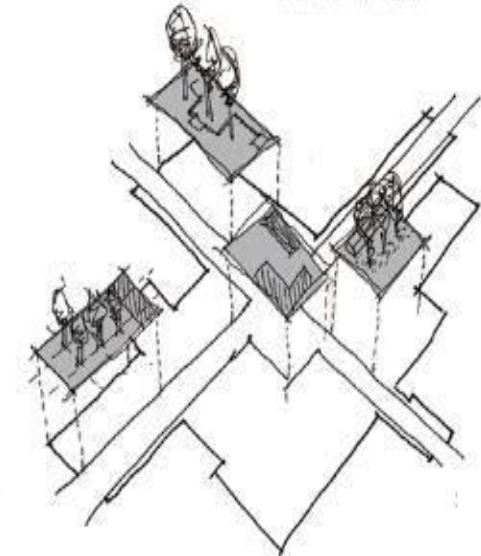
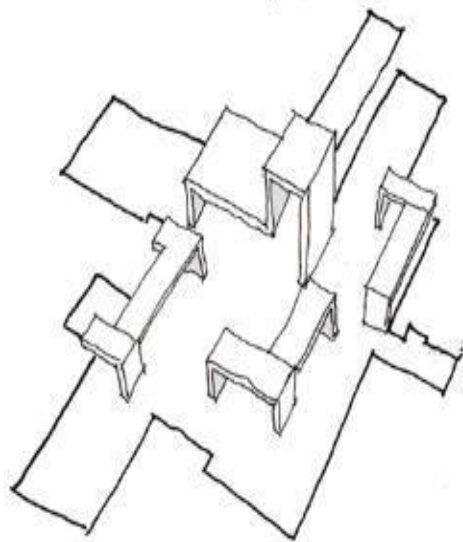
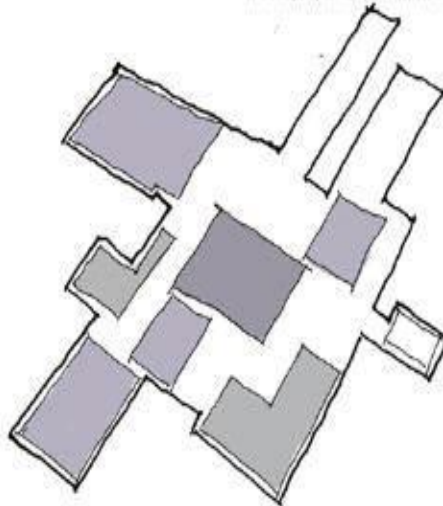
The wider urban context to generate spatial arrangement of scheme

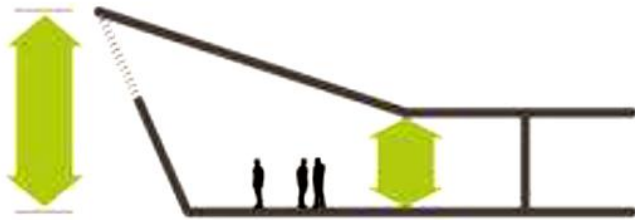
Landscaping of Public Realm, use of the "streets" to connect the spaces



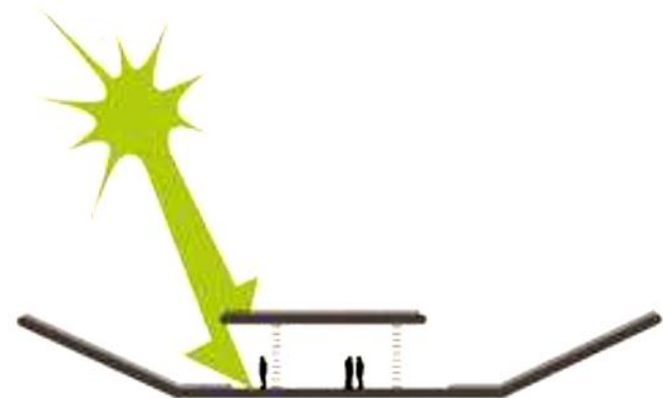
Creation of urban blocks, defined by external spaces, and location of vertical element

Landscaping of Private Realm, reflection of internal layout on family defined spaces





DOUBLE HEIGHT SPACE IN GALLERY



SHADOW TERRACES IN ROOF OASIS



DIFFUSE DAYLIGHT IN EXPOSITION SPACES



LONG VIEWS OVER GREEN ROOF



LONG VIEWS FROM GALLERY HALLWAYS

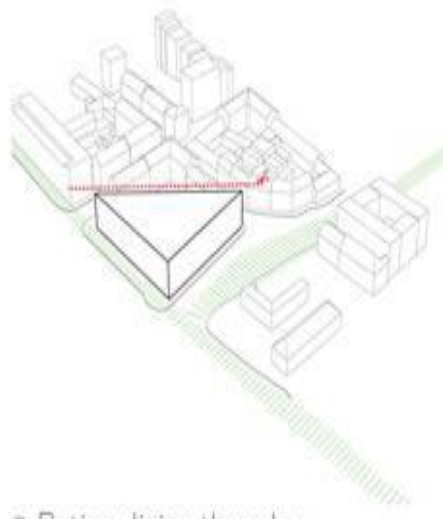


DIRECT VIEW TO PARK THROUGH GAPS

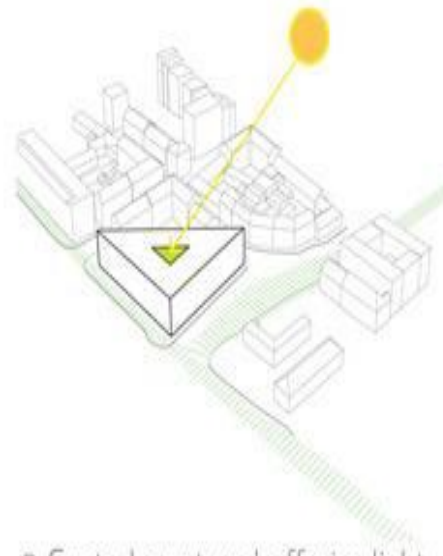




1. Maximising the site potential in accordance to the brief.



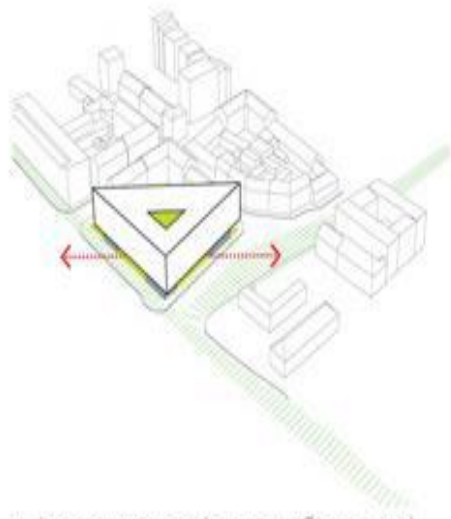
2. Rationalising the edge.



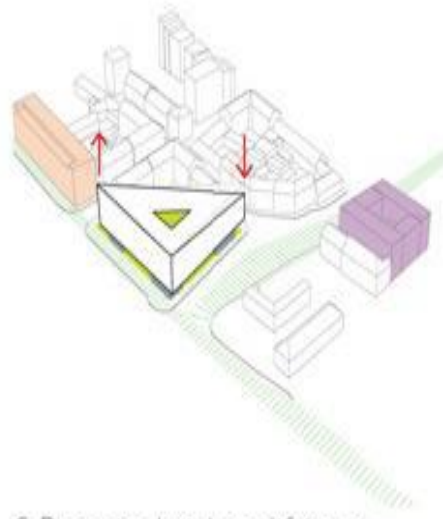
3. Central courtyard, offering light to the Roman ruins.



4. Lifting the building to preserve the Roman Ruins.



5. Improving pedestrian flows and increasing light to the public realm beneath the building.



6. Dropping height or lifting to respond to NUK1 and Arts faculty building.



7. Splitting the form to maximise potential for views and the allow form to meet the ground.



8. Activating the roof scape to become part of the urban landscape.





SEED OF FAITH



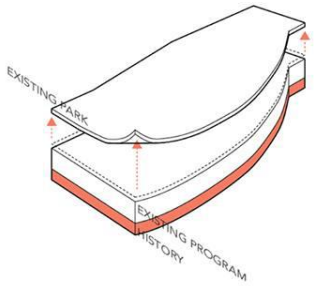
SEED DIES



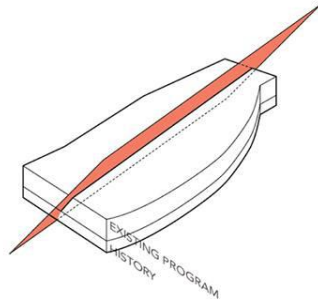
NEW LIFE



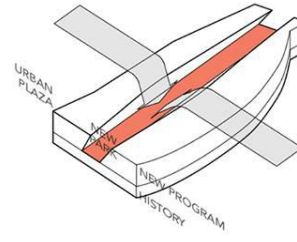
LIFE OVERFLOWS



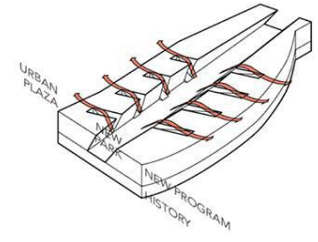
REVEALING



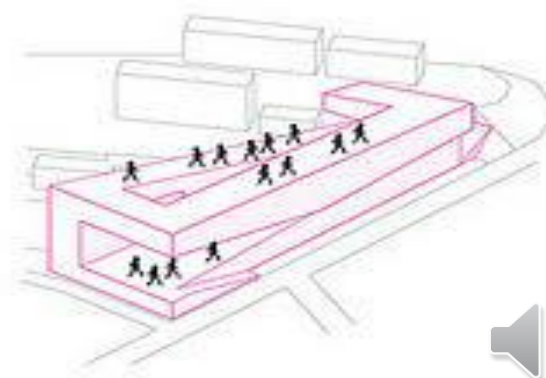
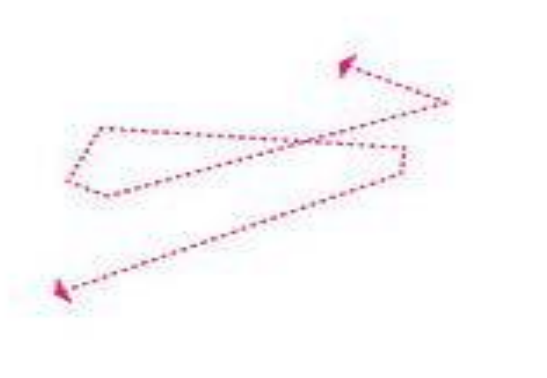
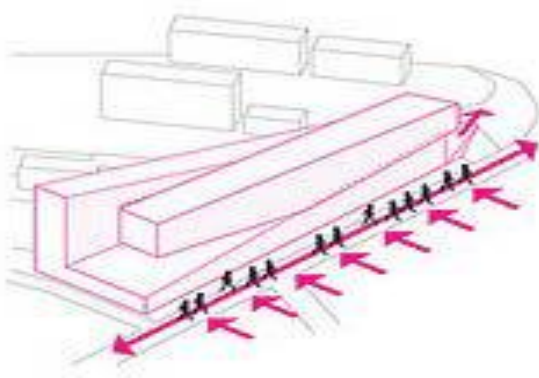
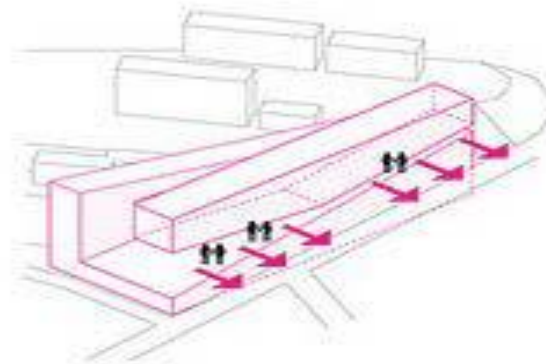
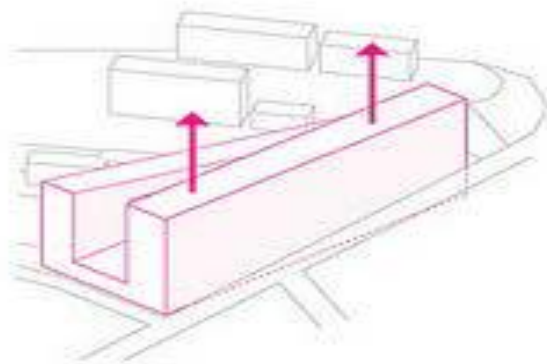
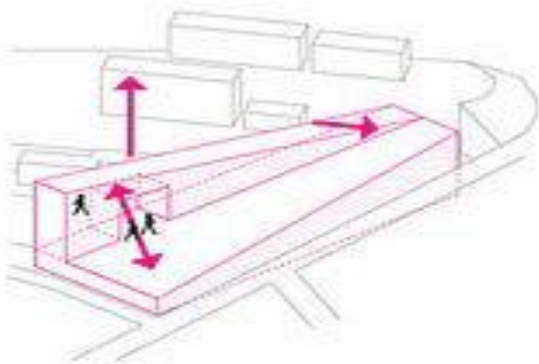
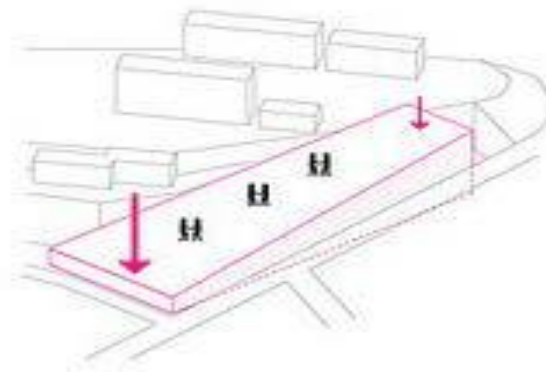
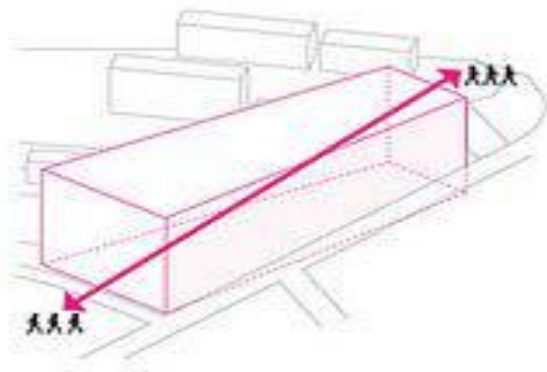
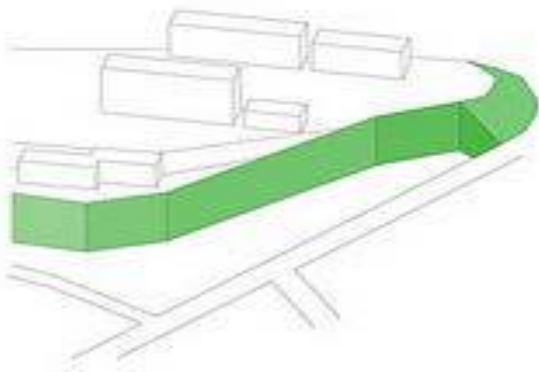
CUTTING

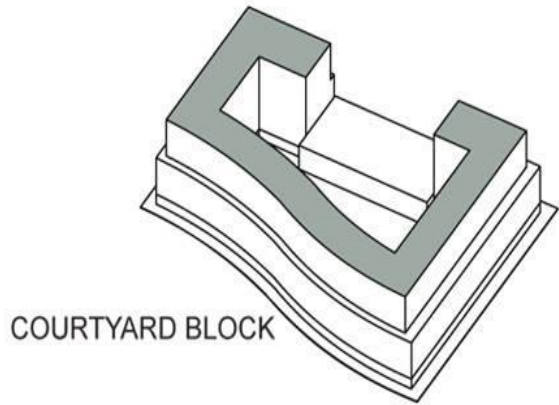


EMPTYING

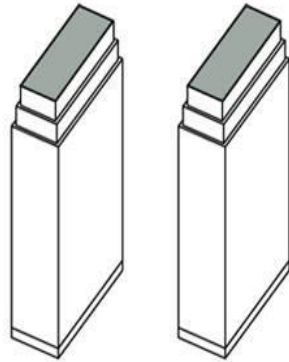


LINKING



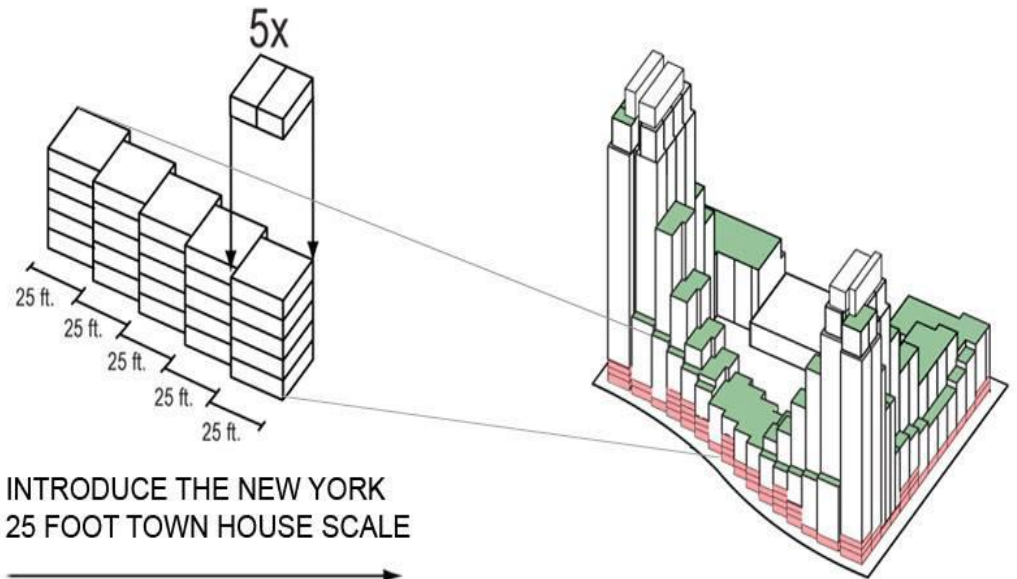
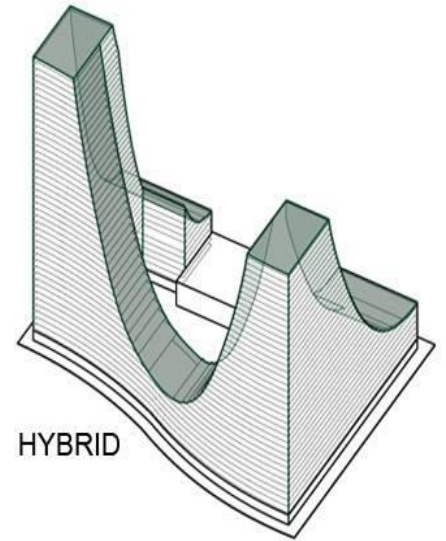


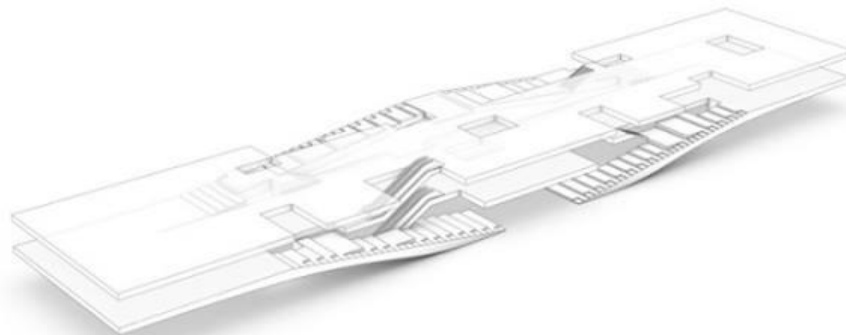
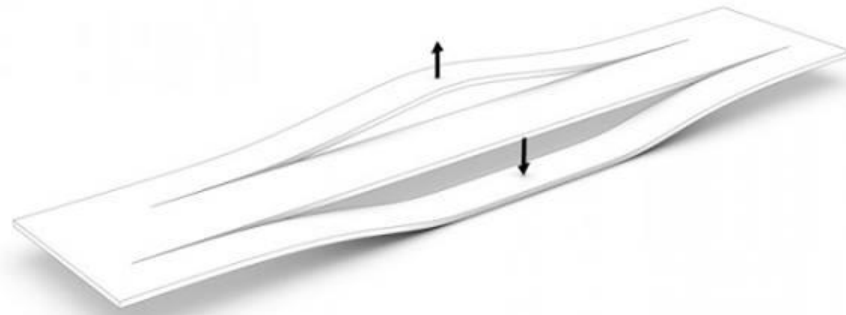
+

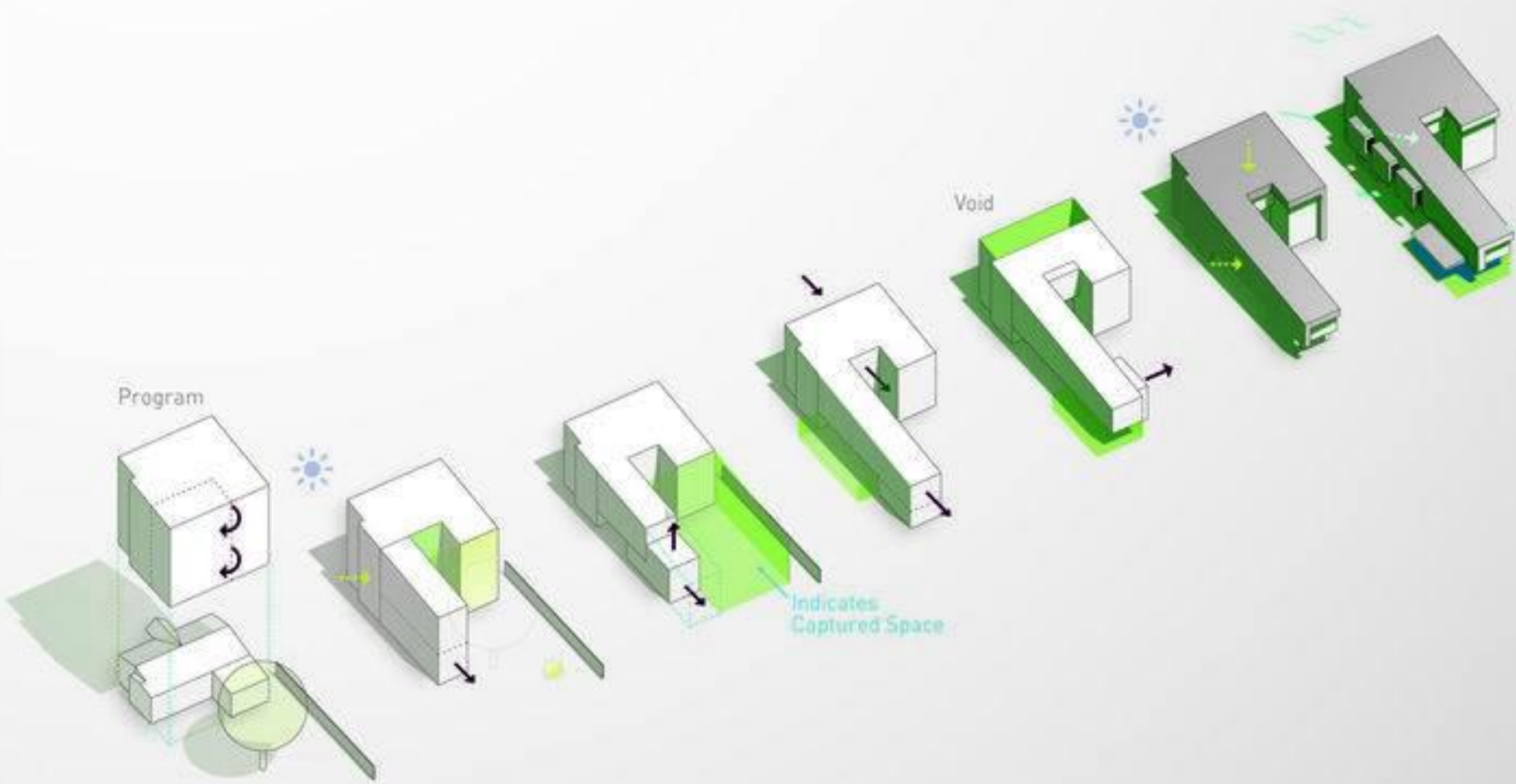


NEW YORK CITY TOWER

=

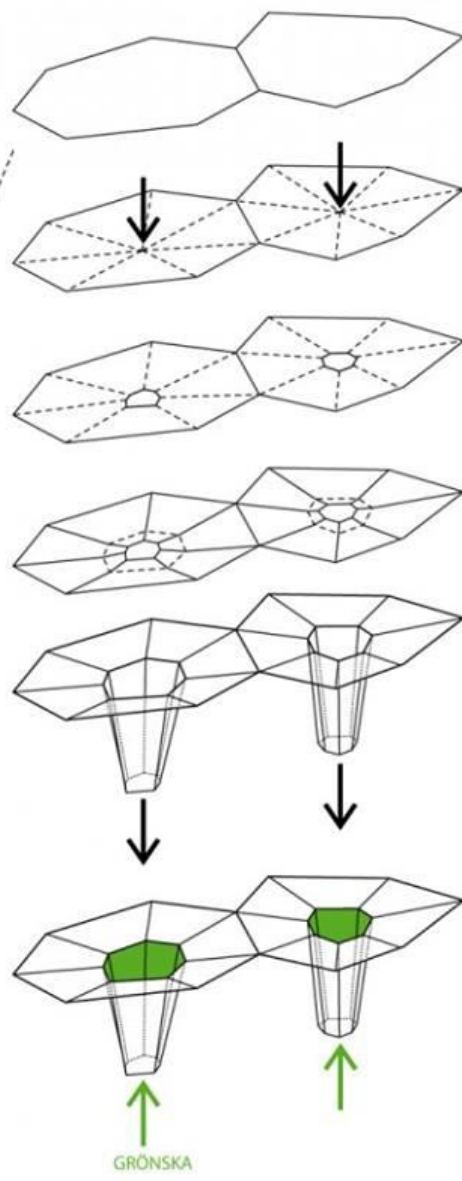
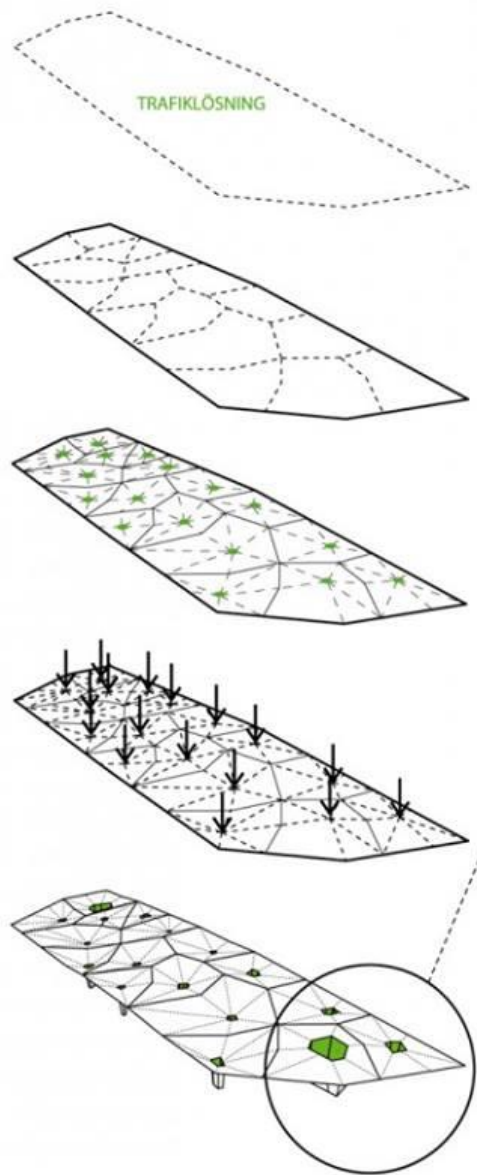




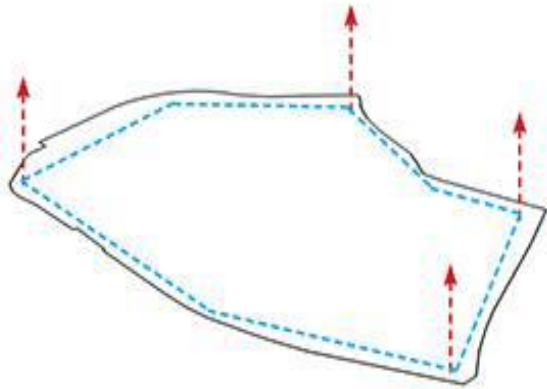


Diagrammatic Evolution.

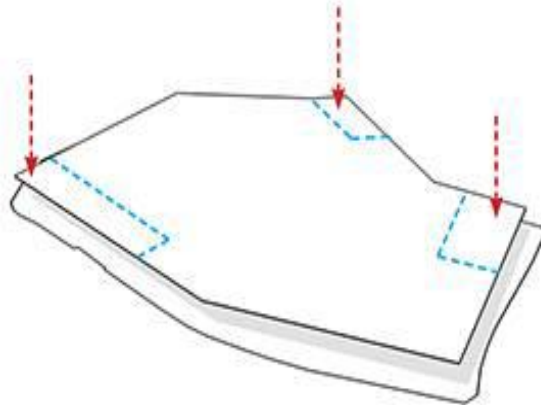




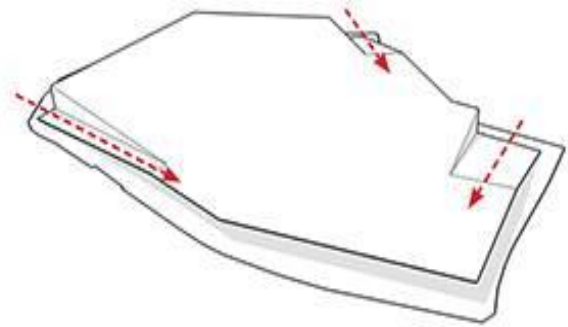
Design Concept 3- Urban Podium



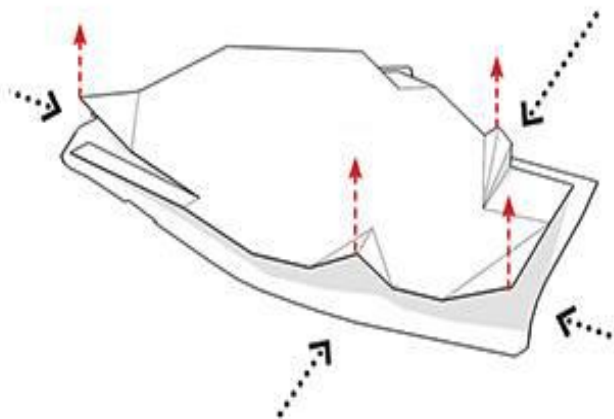
creating raised podium from site footprint



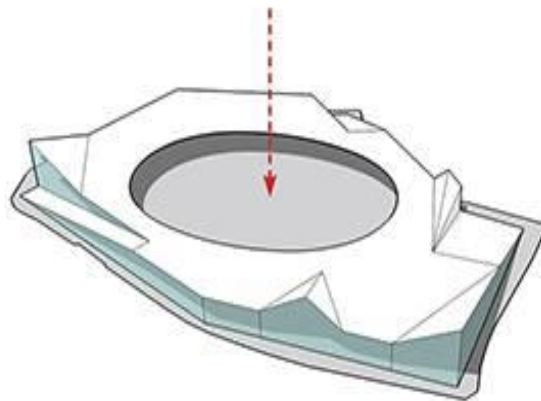
cutting the 'paper edges'



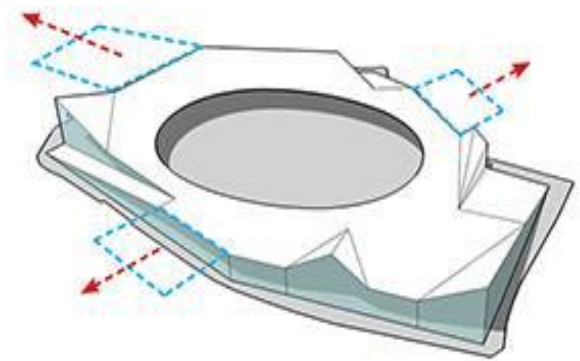
peel down podium corner for pedestrian ramps



fold up to create entrances at street notes

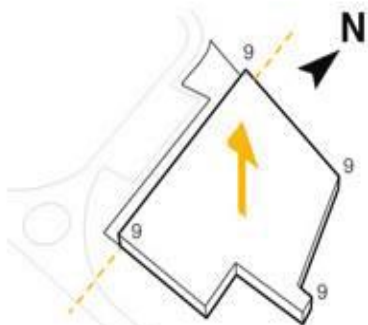


sink first tier of stadium



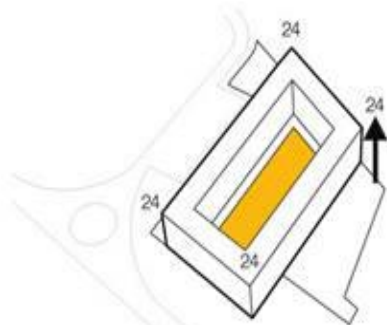
use 'sky bridges' to connect to nearby sports facilities





SATURAZIONE LOTTO

edificando tutta la superficie disponibile si ottiene un volume di 3 piani.



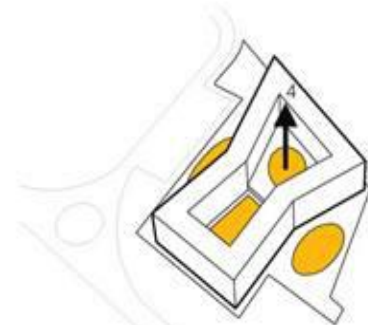
EDIFICIO A CORTE

la tipologia a corte, alta 8 piani, delimita uno spazio interno introverso.



VARIAZIONE VOLUMETRICA

la compressione del volume a corte genera 2 nuovi spazi che dialogano col contesto.



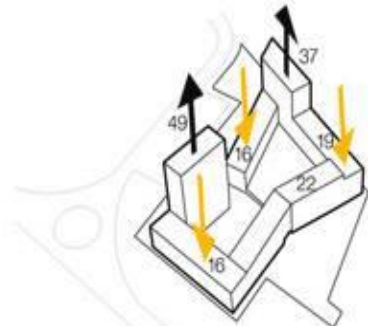
INNALZAMENTO CORTE INTERNA

parte della corte si alza di un livello e crea 2 spazi distinti.



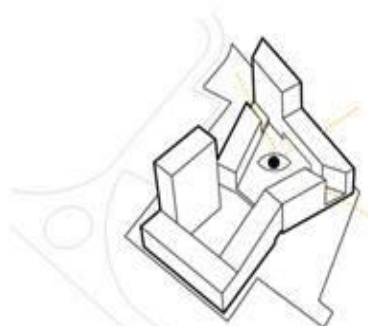
PERMEABILITA' EDIFICIO

l'edificio viene diviso e si crea una permeabilità interno-esterno.



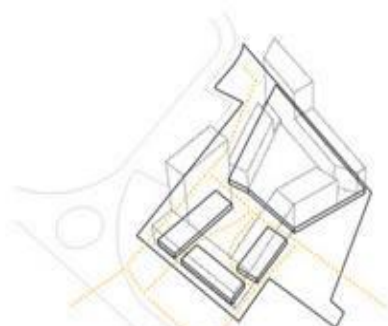
VARIAZIONE DI ALTEZZE

l'esposizione solare e il contesto guidano le variazioni volumetriche dell'edificio.



VISUALI DALLA CORTE RIALZATA

i tagli nell'edificio consentono di avere differenti scorci dalla corte condominiale.

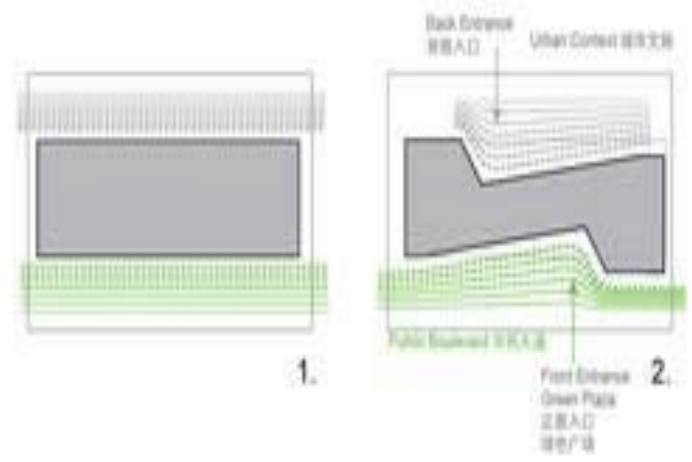
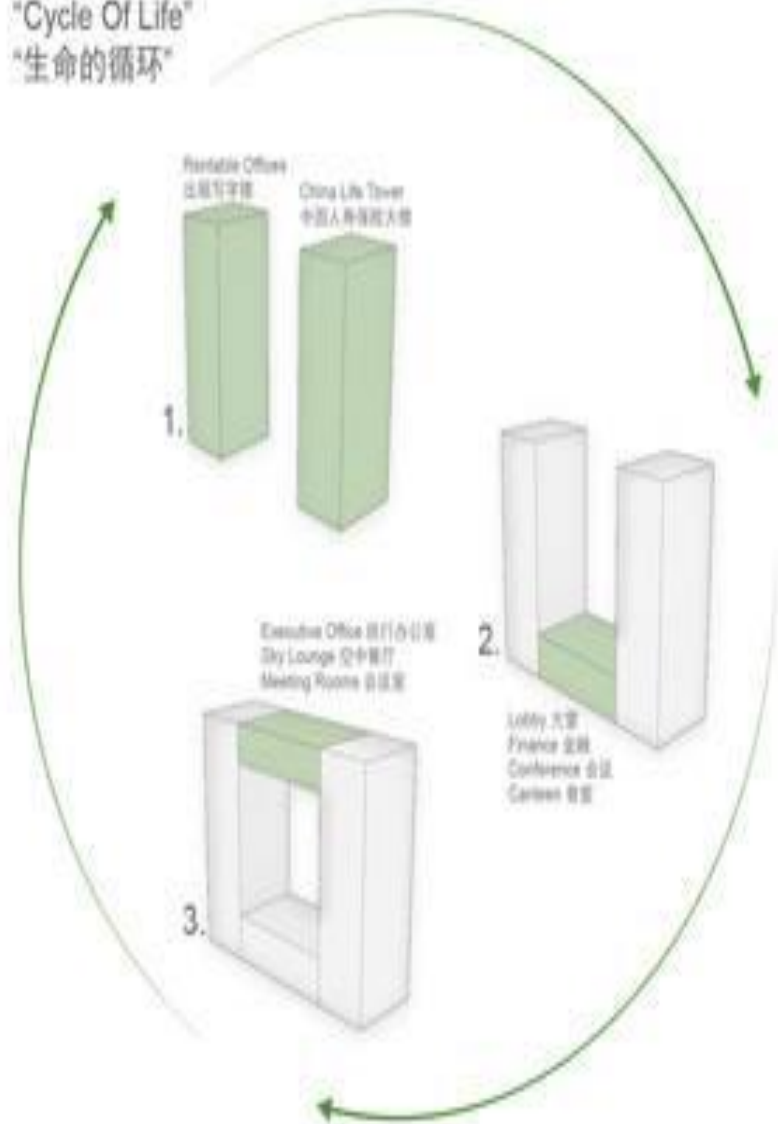


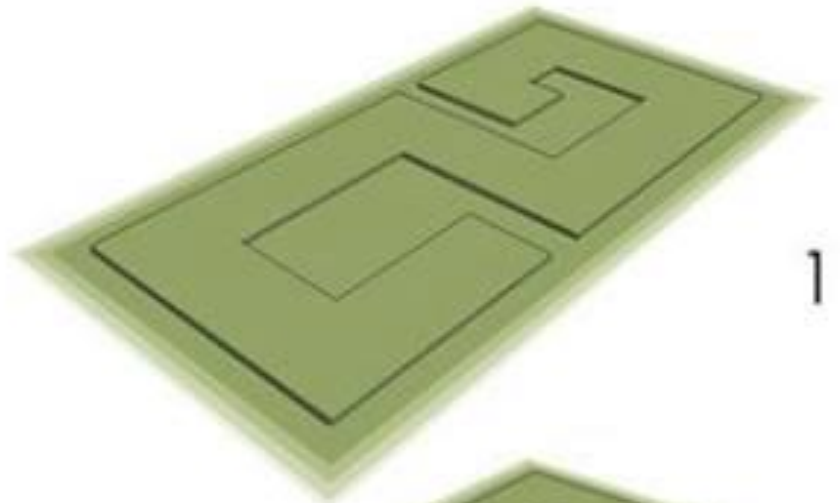
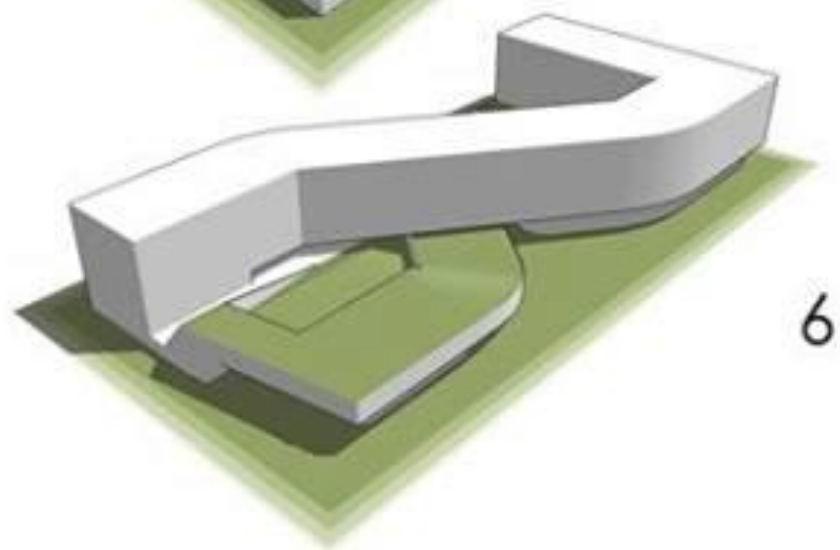
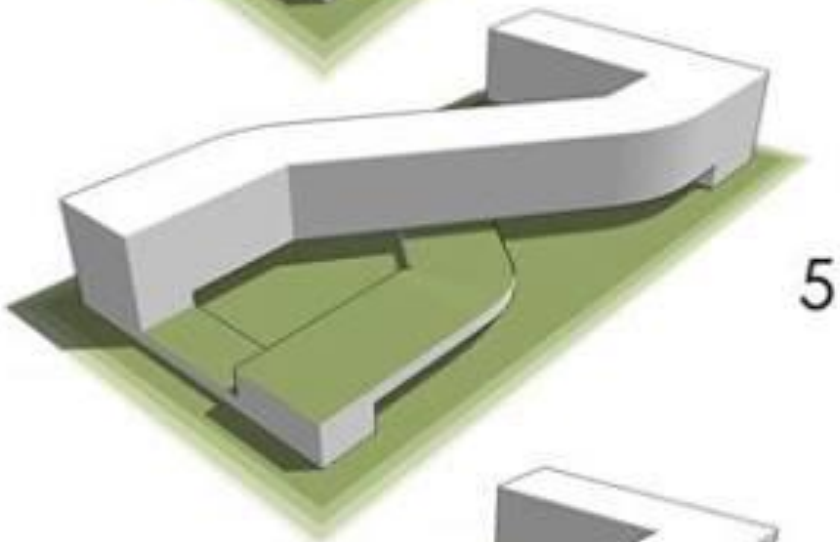
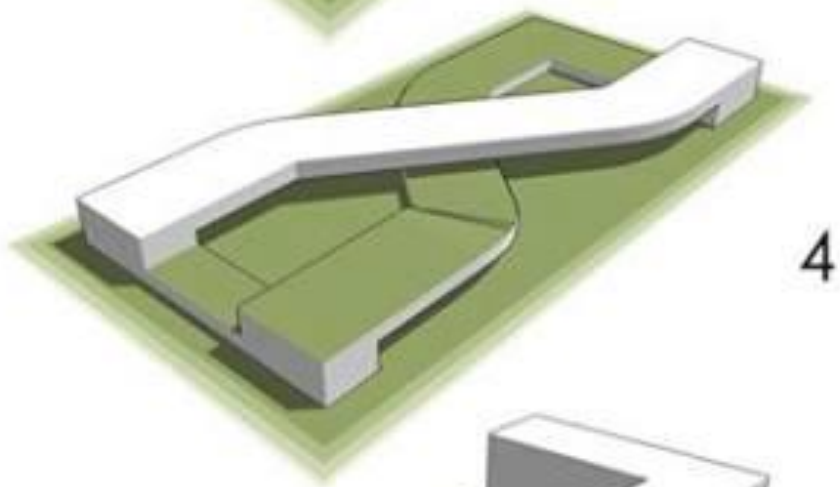
PERMEABILITA' PIANO TERRA

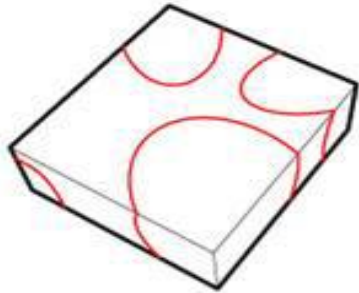
i passaggi pedonali favoriscono il rapporto col contesto circostante.



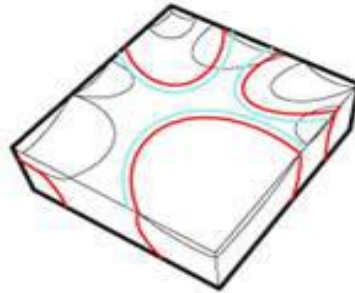
"Cycle Of Life"
"生命的循环"



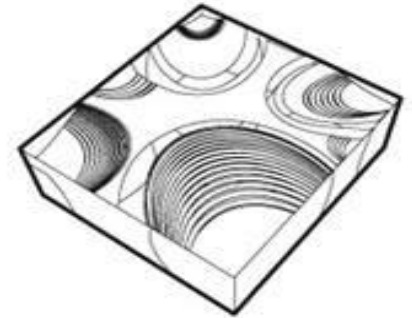




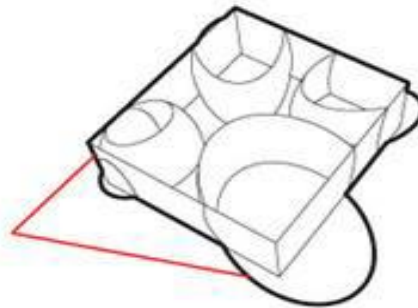
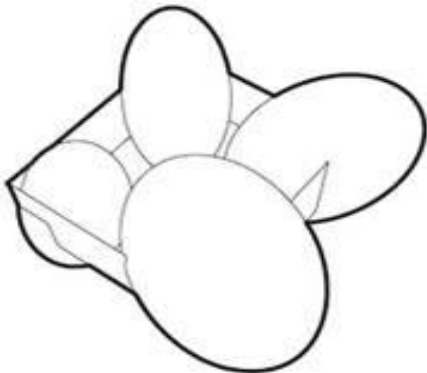
THE LINES PROJECTED ON THE EXTERIOR SKIN WILL BE UTILIZED TO FORM THE ROOF.



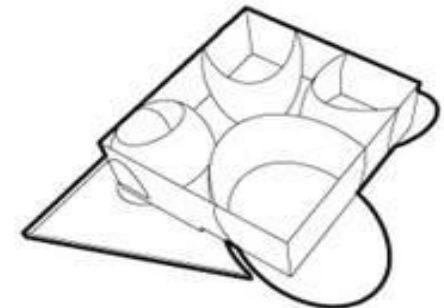
WE THEN ADD NEW CURVES TO FORM THE FINAL IMAGE OF THE ROOF, AND IN ORDER TO PERCEIVE THE SHAPES IN THE ATRIUM WE OFFSET THE CURVES IN THE ROOF, PROVIDING NATURAL LIGHTS.



WE CUT THE ROOF AGAIN IN THE PROXIMITY OF THE ROOF OF EACH EGGS IN ORDER TO PROVIDE NATURAL LIGHTS ON THE 7TH FLOOR.

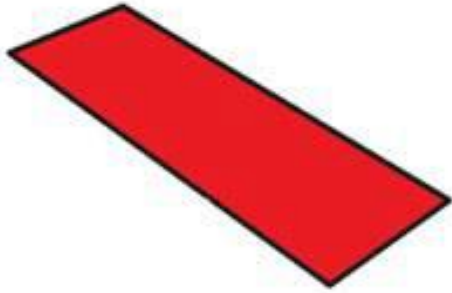


WE CUT THE EGGS AND IN THE INSIDE THE BOX THEY BECOME OUR EXHIBITION SPACES OUTSIDE THE ELLIPSE GIVE SHAPE TO THE LANDSCAPE.

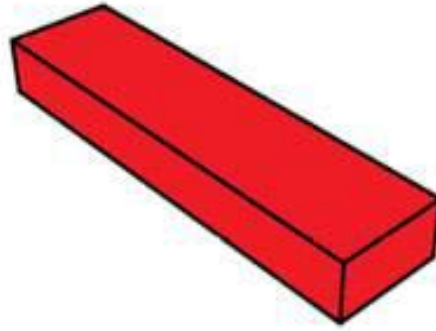


WE PUSH DOWN THE SOUTH WEST CORNER TO FORM A SUNKEN GARDEN.

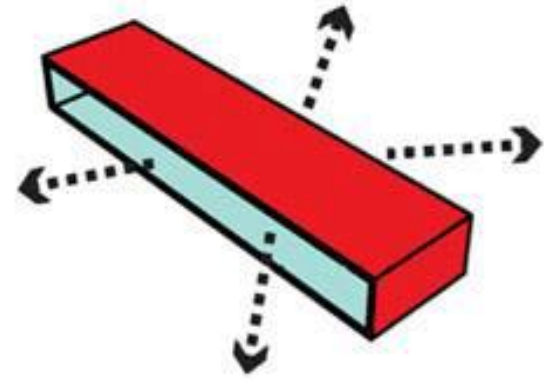




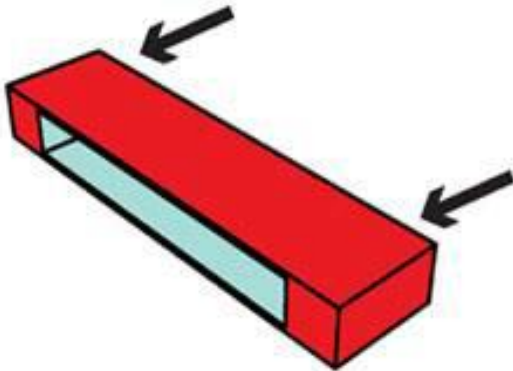
STEP 1: AREA



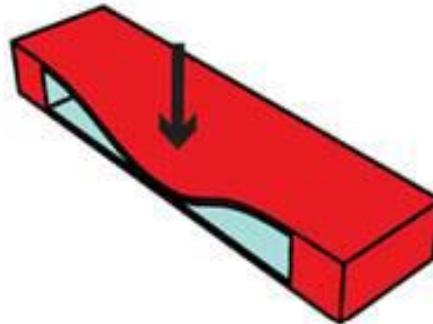
STEP 2: TENNIS CLUB VOLUME



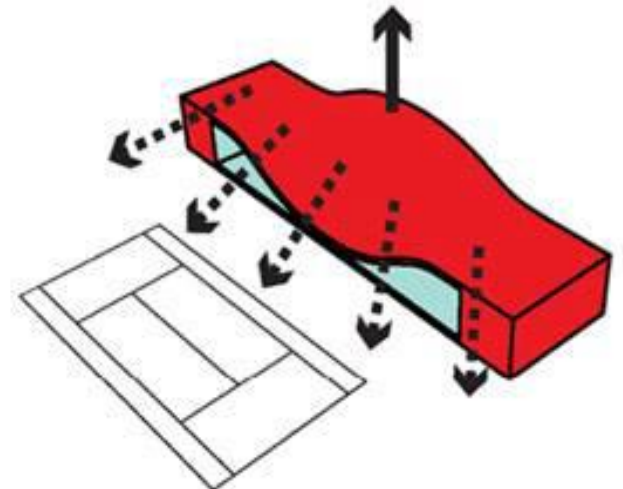
STEP 3: OPEN FOR VIEWS



STEP 4: ADD CHANGING ROOMS

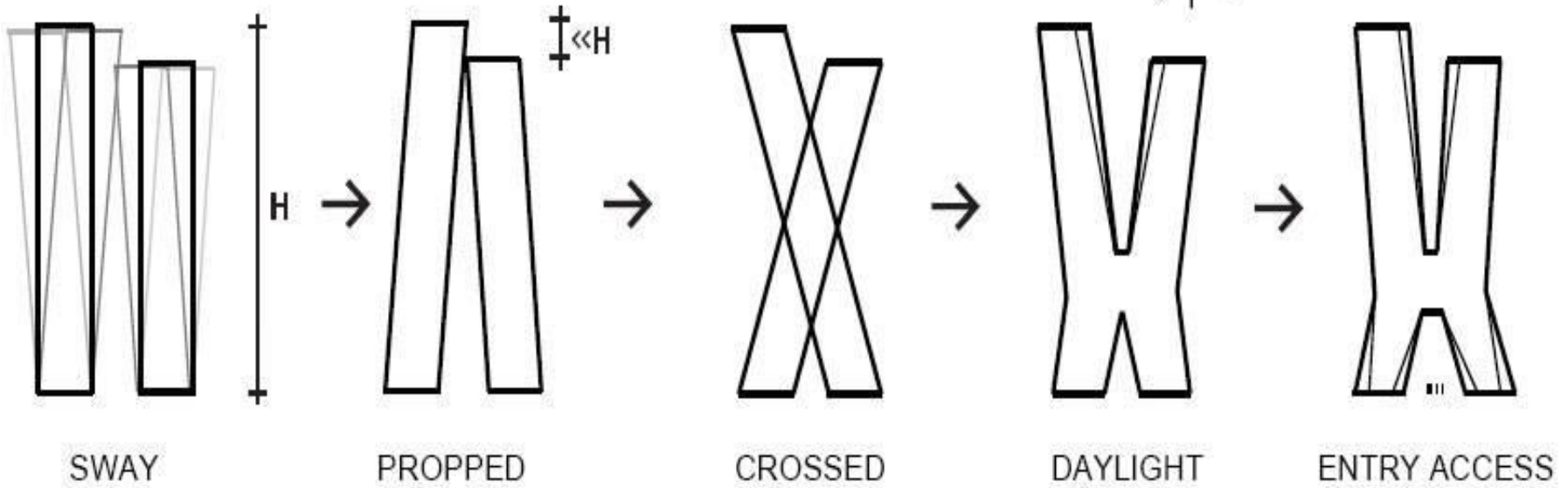


STEP 5: PUSH DOWN FOR ACCESS

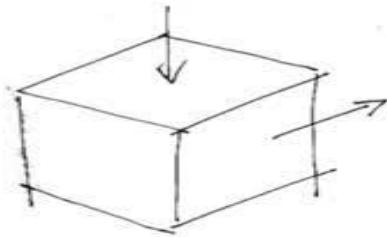


STEP 6: LIFT FOR BETTER VIEWS

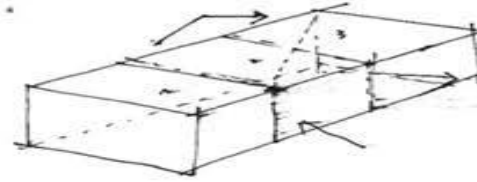




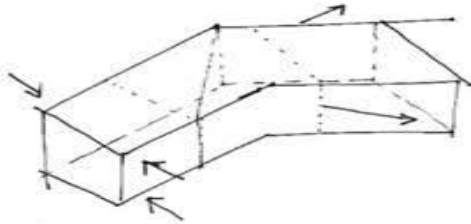
DESARROLLO DEL VOLUMEN



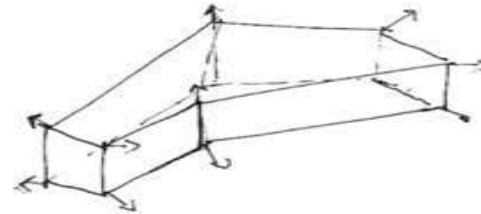
1 Volumen Formal Base



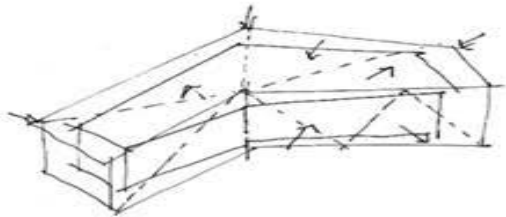
2 Extención y Aplanado



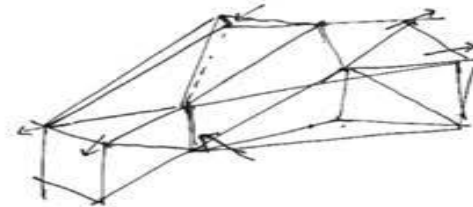
3 Quiebre



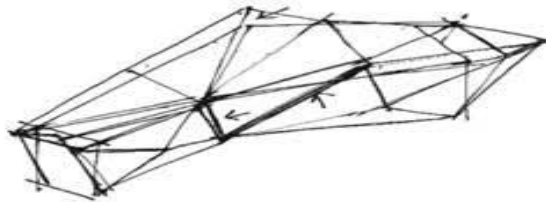
4 Extencion y Fugas



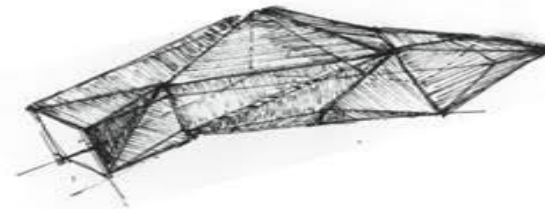
5 Doble Piel



6 Triangulación, Transgresiones
incorporación de aleros

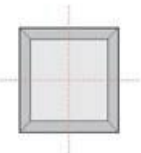


7 Tomas de Aire y Pendientes
Sombras de Viento

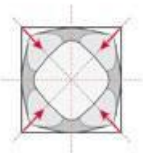
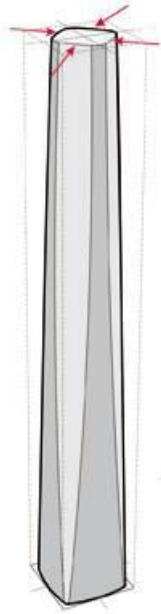


8 Forma y Volumen

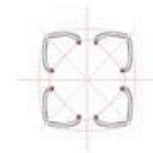




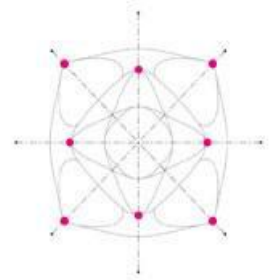
体块
Mass

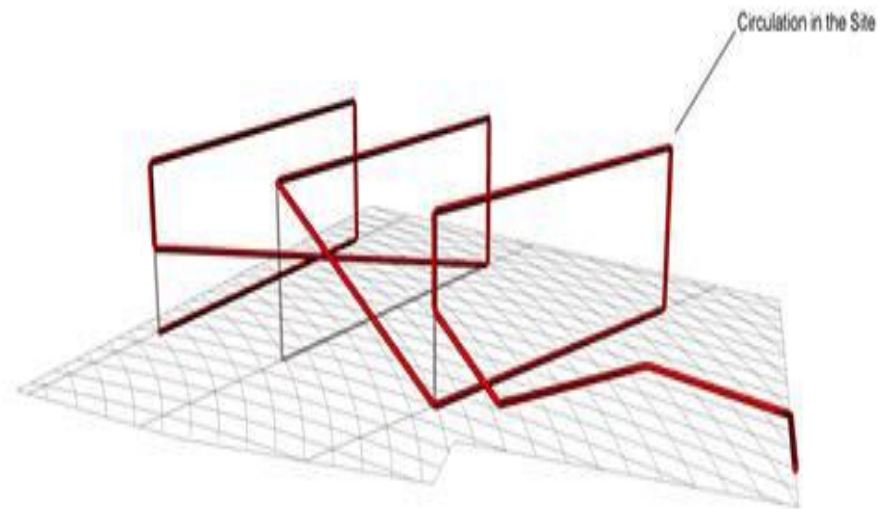
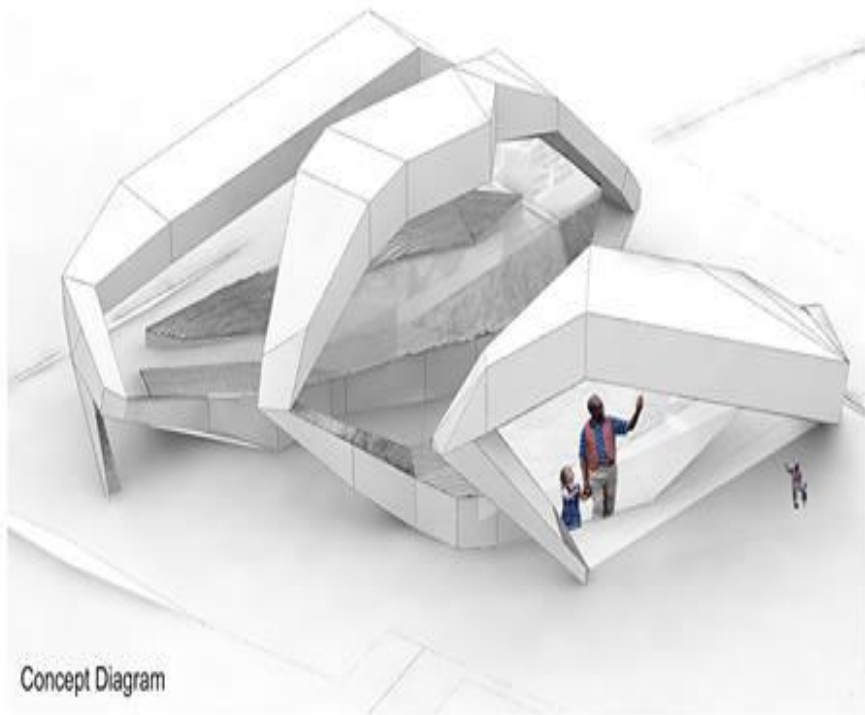
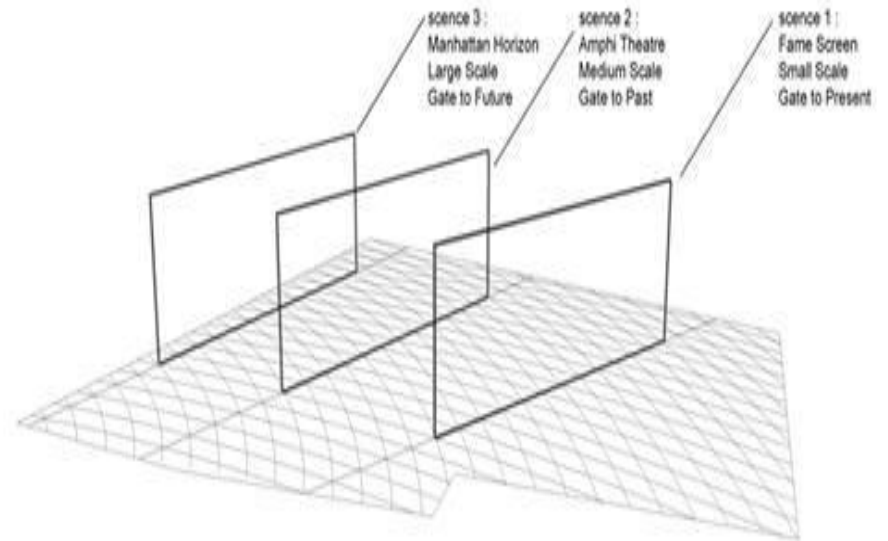
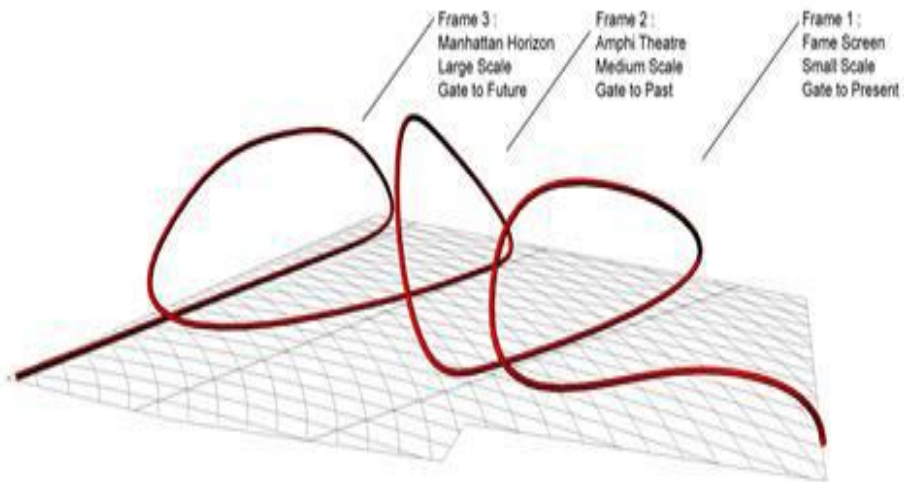


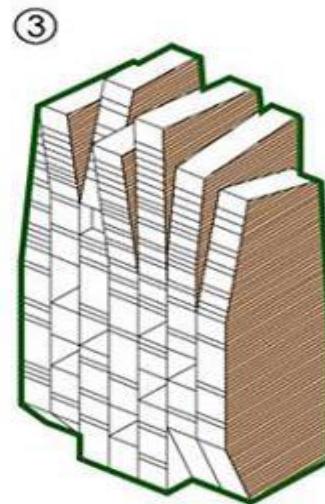
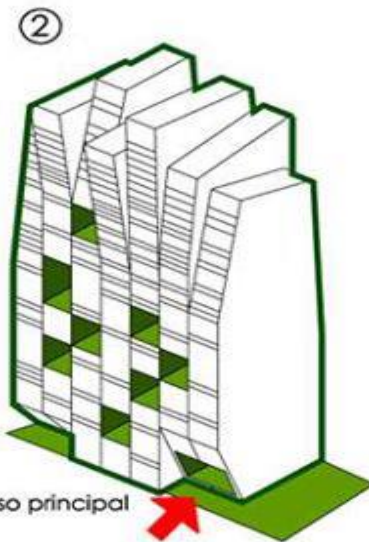
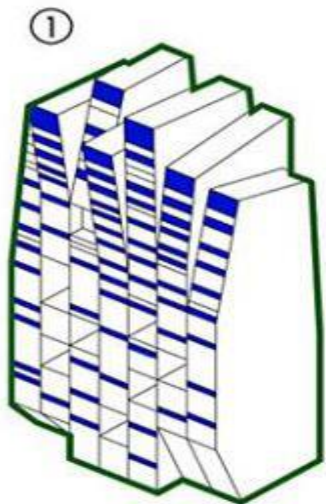
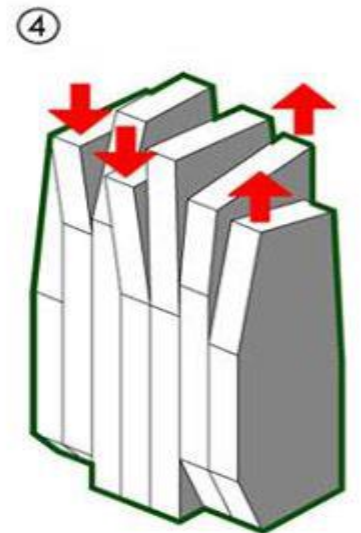
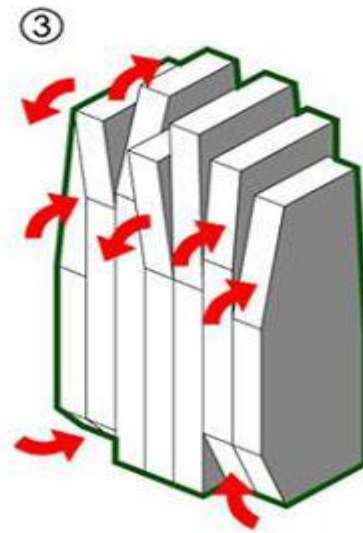
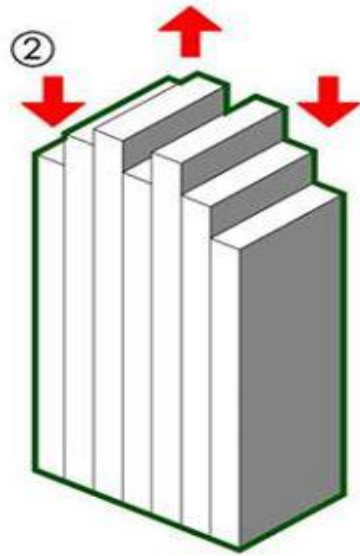
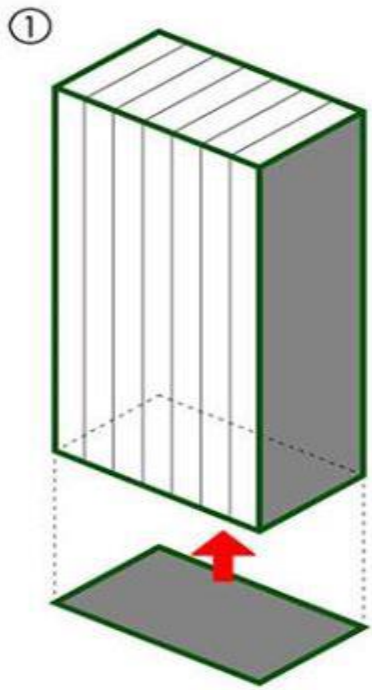
锥形渐变
Tapered Corners

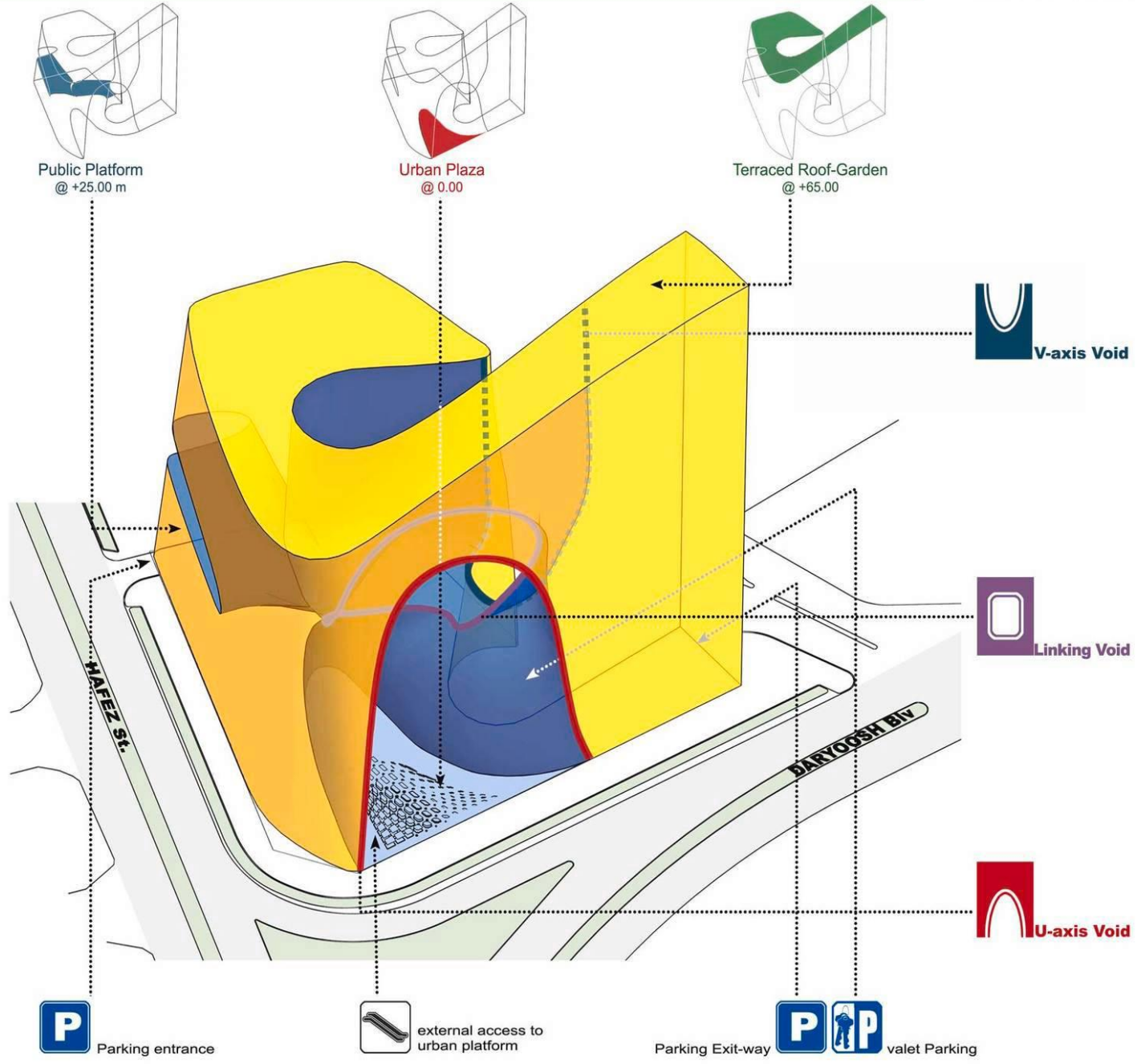


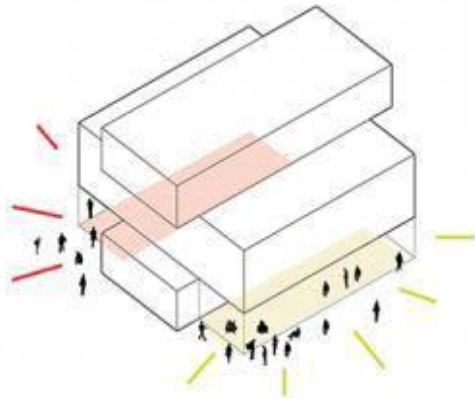
巨型支撑结构
Mega-Columns







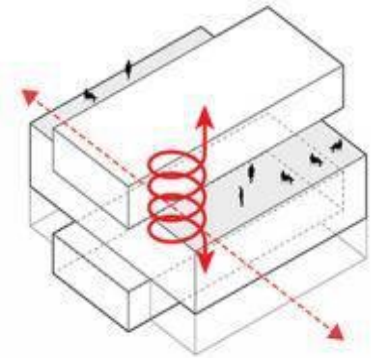




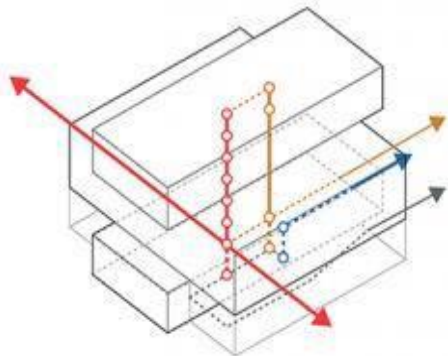
STRONG CONNECTION WITH PUBLIC SPACE



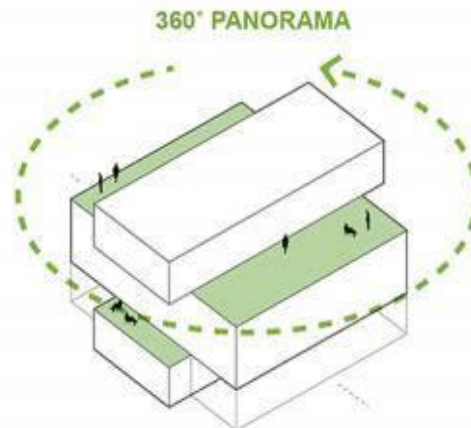
CLEAR PROGRAMMATIC IDENTITY



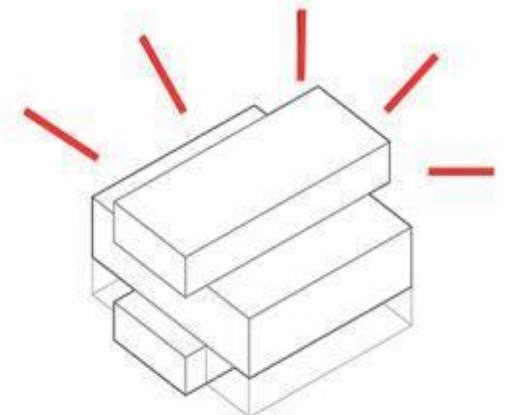
VERTICAL CONNECTION ACTIVE COMMUNICATION



SEPARATE ORGANISATION PROGRAM

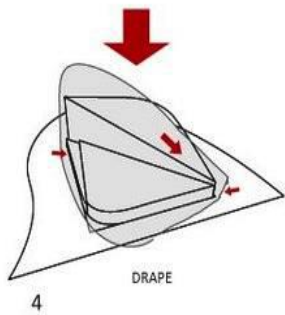


GENEROUS TERRACES



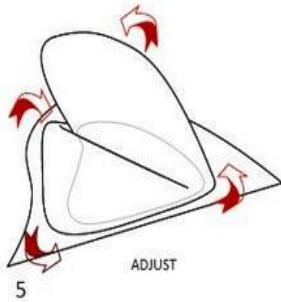
STRONG IDENTITY FOR KUNST-CAMPUS





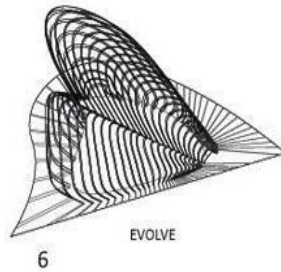
DRAPE

4



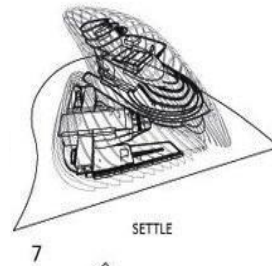
ADJUST

5



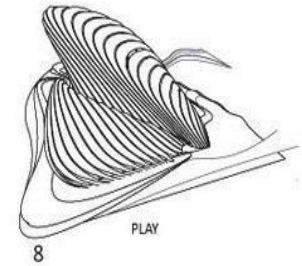
EVOLVE

6



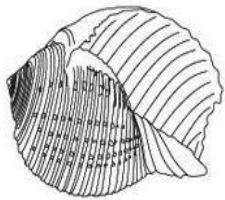
SETTLE

7



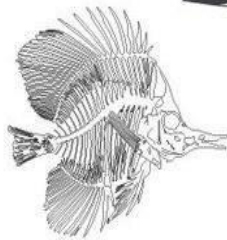
PLAY

8



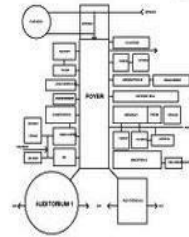
_FORM

MUSIC SHELL
SYMBOLIC REFERENCE TO SEA SOUNDS AND ECOS



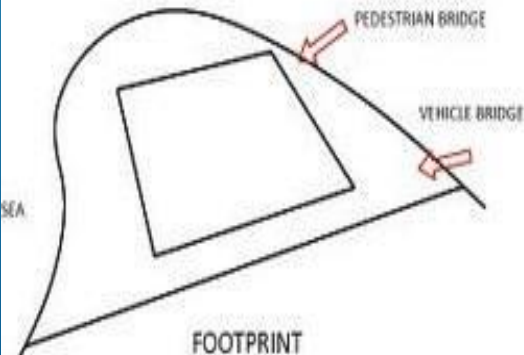
_SKIN

BUTTERFLY FISH SKELETON & TRANSPARENCY
INDIAN AND PACIFIC OCEAN ICONIC FISH



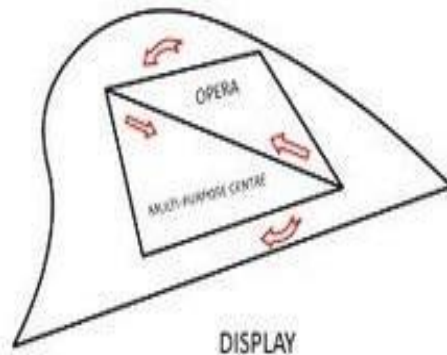
_PROGRAM

58,000 SQM USE & RELATION
NEW CENTRE AND CULTURAL GATEWAY FOR BUSAN



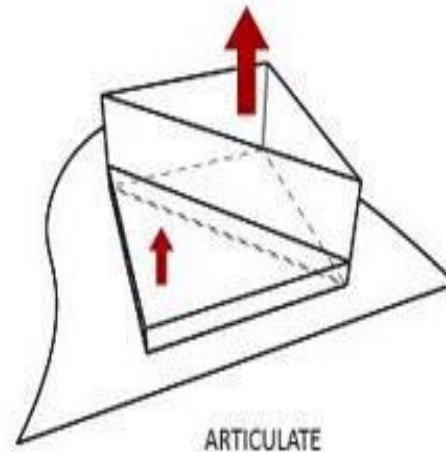
FOOTPRINT

1



DISPLAY

2



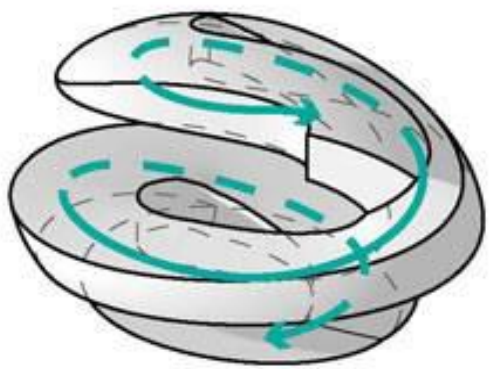
ARTICULATE

3



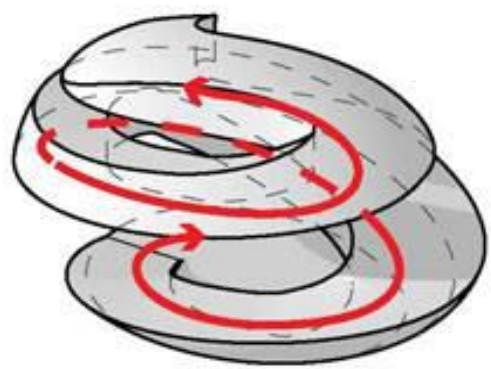
_THEME

OPERA & MULTI-PURPOSE CENTRE
BUSAN, SOUTH KOREA



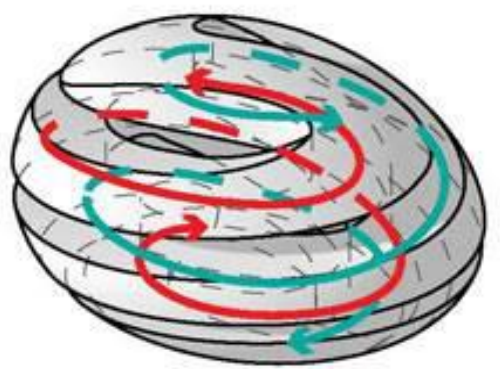
HELICOIDAL 1 UP/DOWN

+

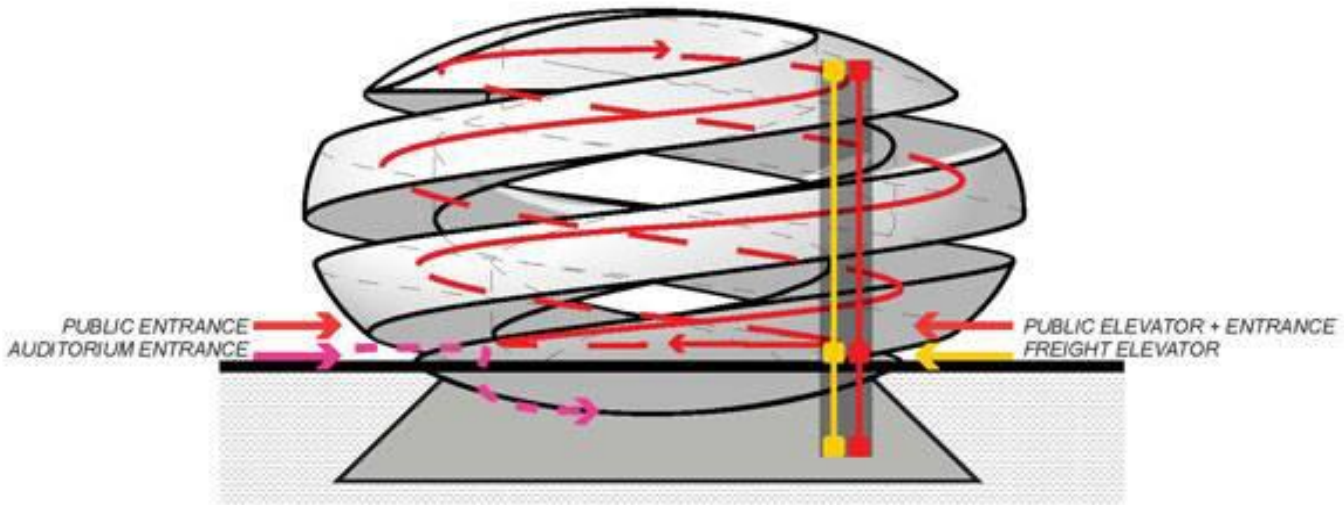


HELICOIDAL 2 DOWN/UP

=



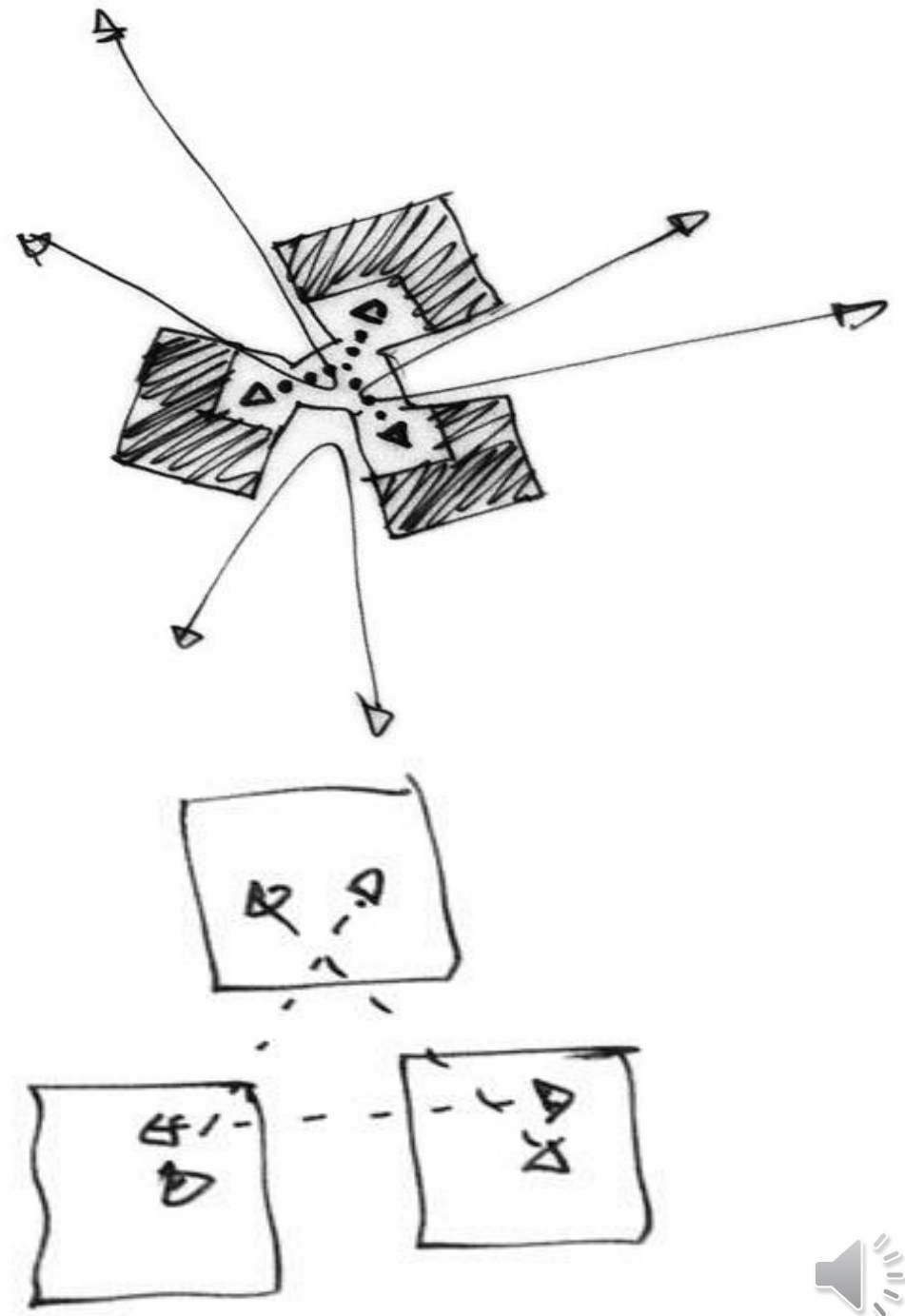
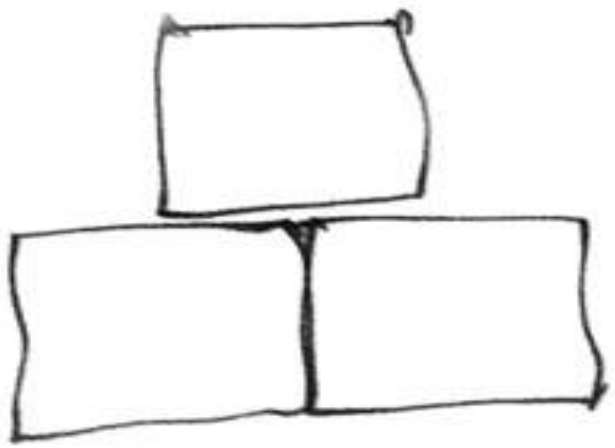
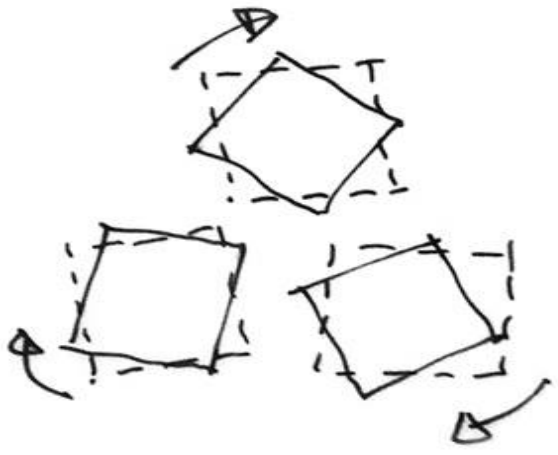
CONTINUOUS CIRCULATION

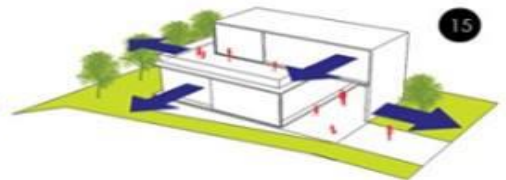
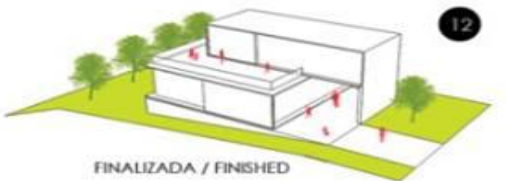
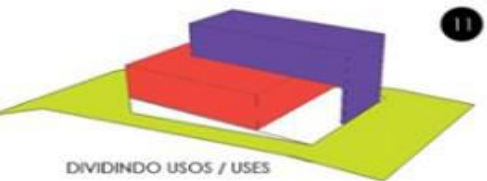
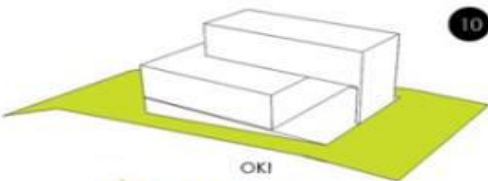
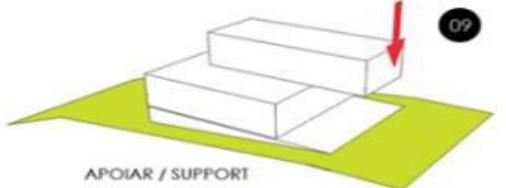
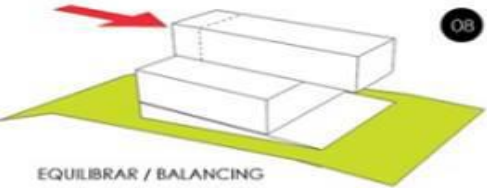
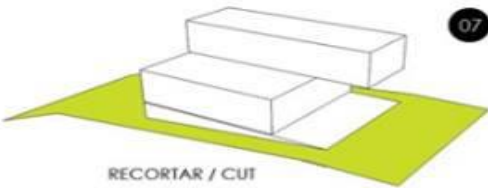
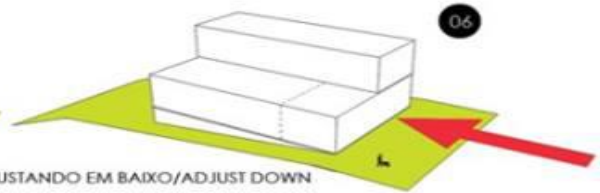
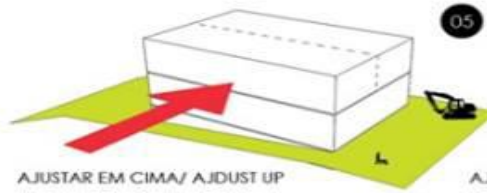
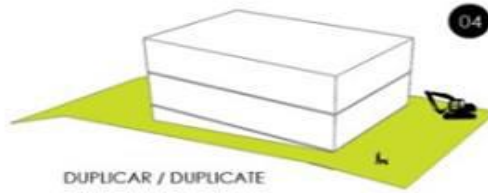
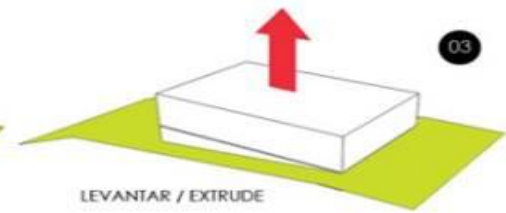
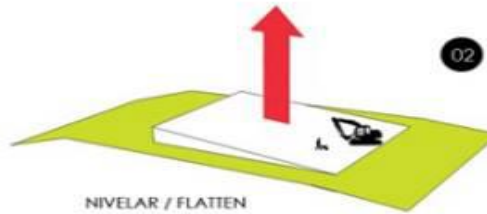


PUBLIC ENTRANCE
AUDITORIUM ENTRANCE

PUBLIC ELEVATOR + ENTRANCE
FREIGHT ELEVATOR







شكرا لحسن الاصغاء

